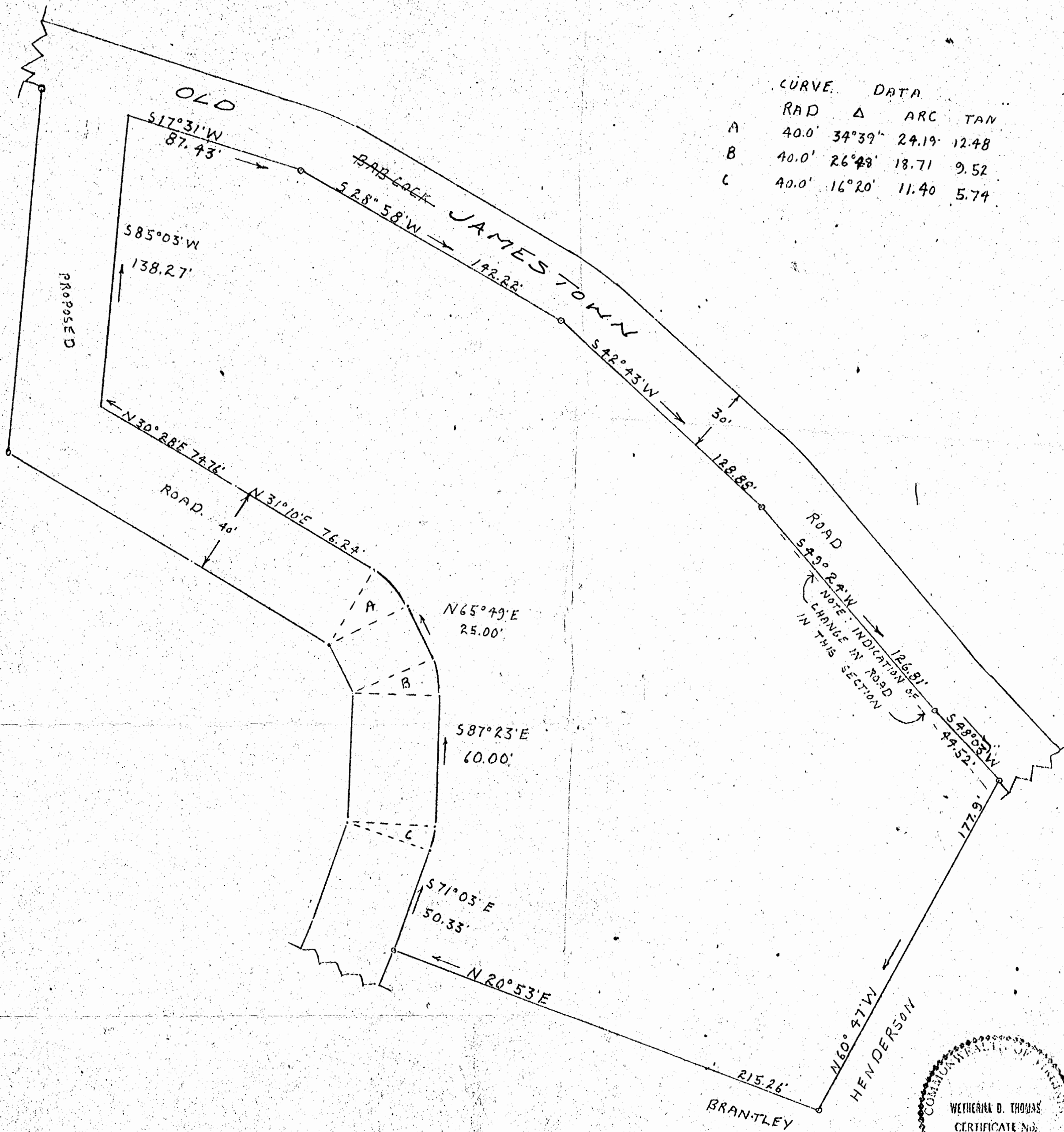


CURVE DATA				
	RAD	Δ	ARC	TAN
A	40.0'	34°39'	24.19	12.48
B	40.0'	26°48'	18.71	9.52
C	40.0'	16°20'	11.40	5.74



Recorded October 25, 1956

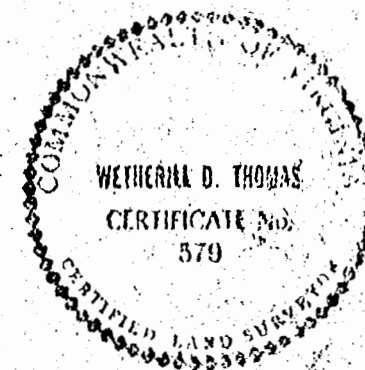
in

D. B. 59, page 339

PLAT SHOWING PARCEL OF LAND BELONGING TO
BRANTLEY HENDERSON SITUATED IN JAMES CITY COUNTY
VIRGINIA
SURVEYED APRIL 1956

SCALE 1" = 40'

AREA =



Sig. Wetherill D. Thomas