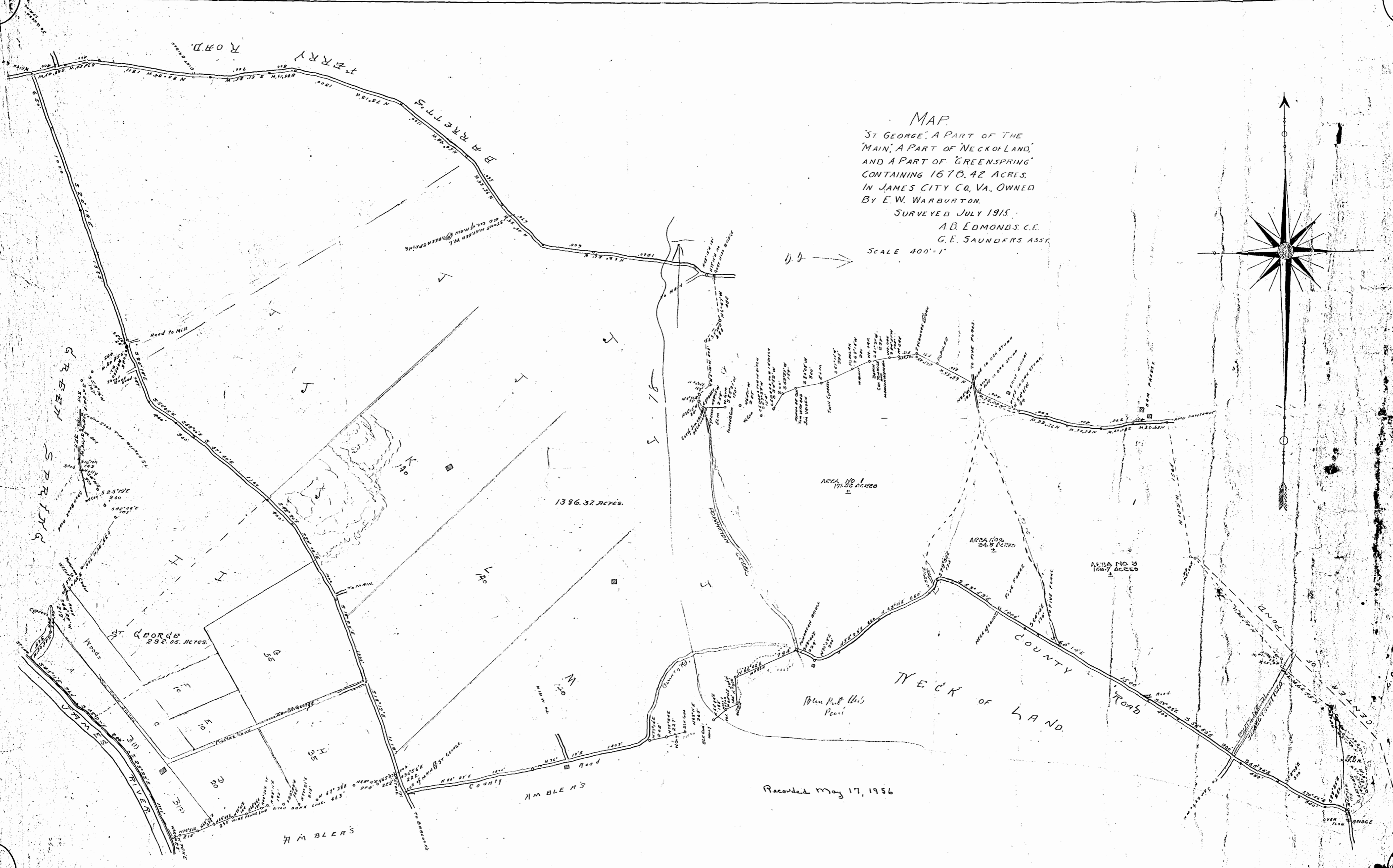
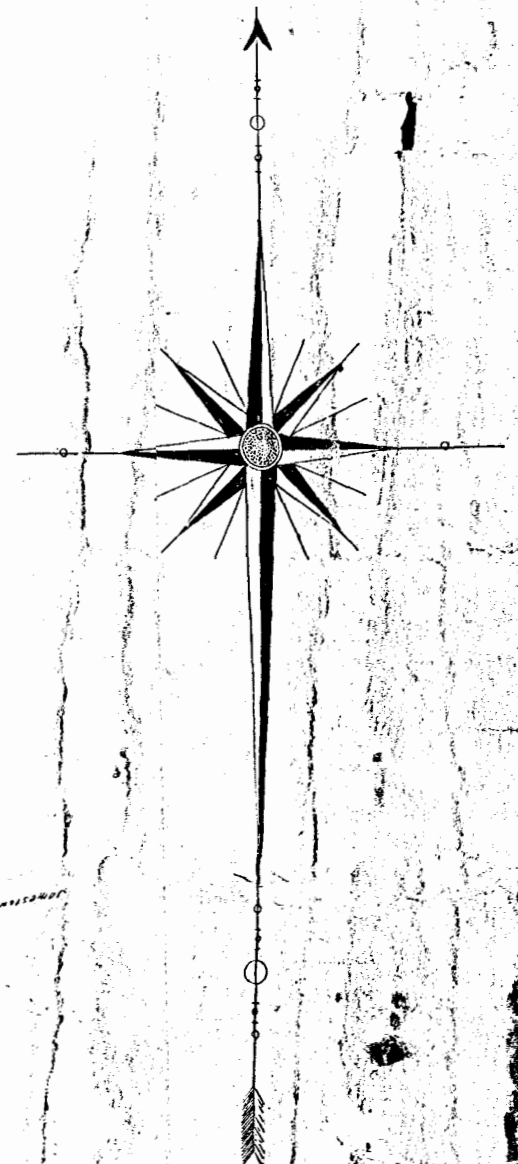


MAP  
 'ST. GEORGE', A PART OF THE  
 'MAIN', A PART OF 'NECK OF LAND',  
 AND A PART OF 'GREENSPRING'  
 CONTAINING 1678.42 ACRES.  
 IN JAMES CITY CO, VA., OWNED  
 BY E. W. WARBURTON.

SURVEYED JULY 1915.  
 A. B. EDMONDS, C.E.  
 G. E. SAUNDERS, ASST.

SCALE 400' = 1"



Recorded May 17, 1956