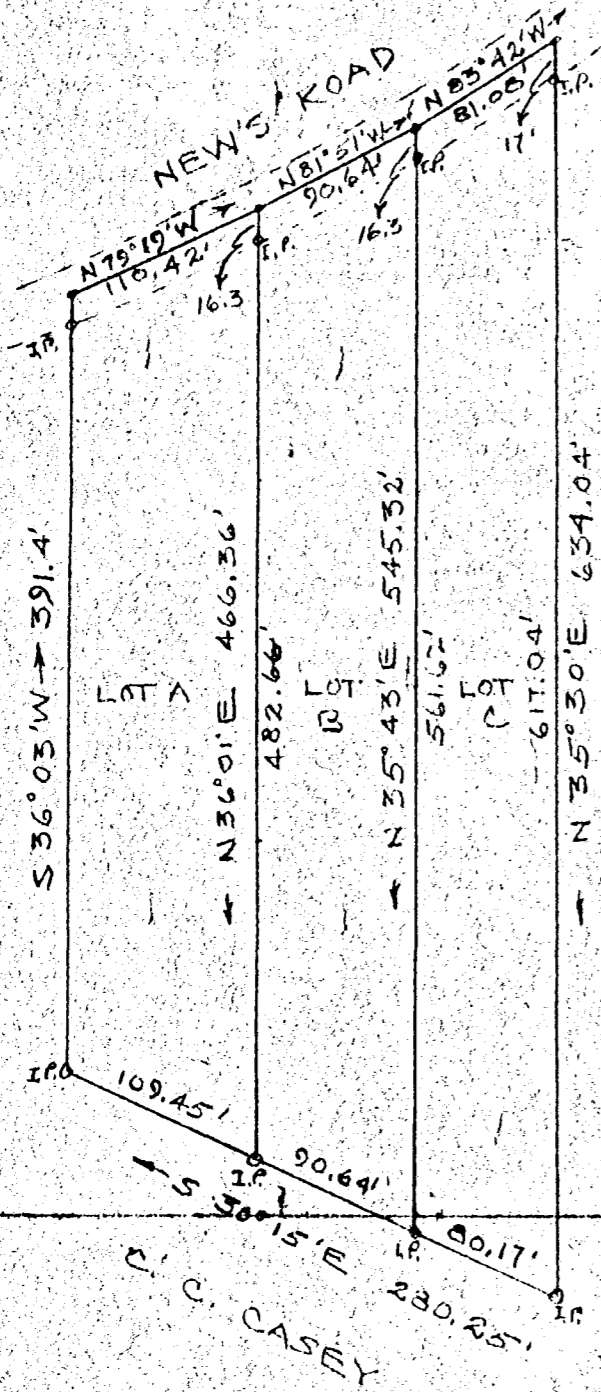


BERNARD GLASS



D.C. RENICK

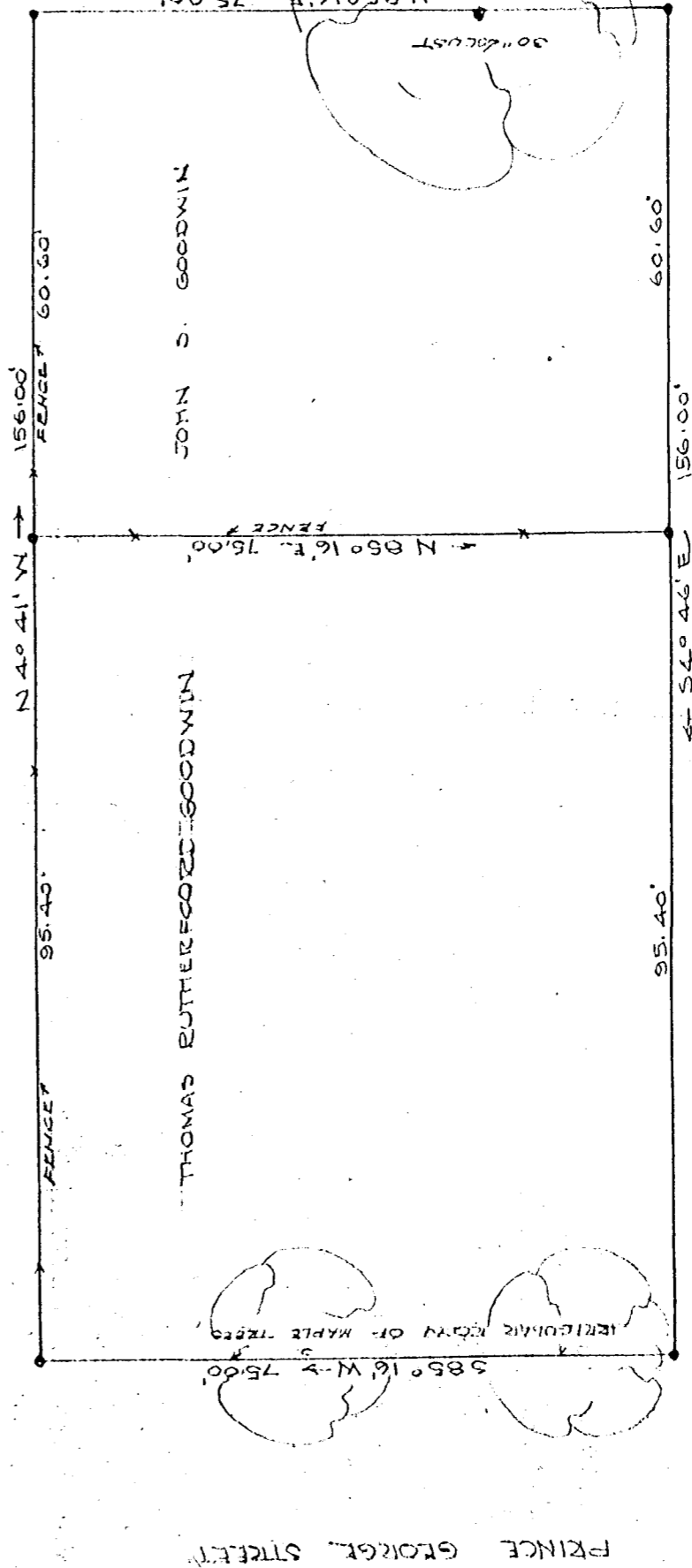
Renick to Harris

PLAT SHOWING THREE LOTS OF LAND BELONGING TO D.C. RENICK. IN JAMES CITY COUNTY, VA. SURVEYED AUGUST, 1963. AVERAGE LOT = .98 ACRES. SCALE 1"=100'. W. D. THOMAS, -C.L.S.-579

LINE IN CENTER OF ROAD AS INDICATED

FOSTER (FORMERLY)

CARLTON CASEY



Restoration to Thos Rutherford Goodwin John S. Goodwin

NADDAU STREET

PLAT SHOWING CERTAIN PROPERTIES OF THE W.A.R. GOODWIN ESTATE SITUATED IN THE CITY OF WILLIAMSBURG VIRGINIA SURVEYED APRIL 5, 1954. SCALE 1"=20'. PROPERTY LINES SHOWN ARE IN ACCORDANCE WITH DIMENSIONS GIVEN IN DEEDS F. 583 & OCCASIONAL LINES INDICATED BY GOODWIN HEIRS MENTIONED ABOVE.

Wm. D. Thomas
Aug 16, 1914 187

NO. 40 P. 51