

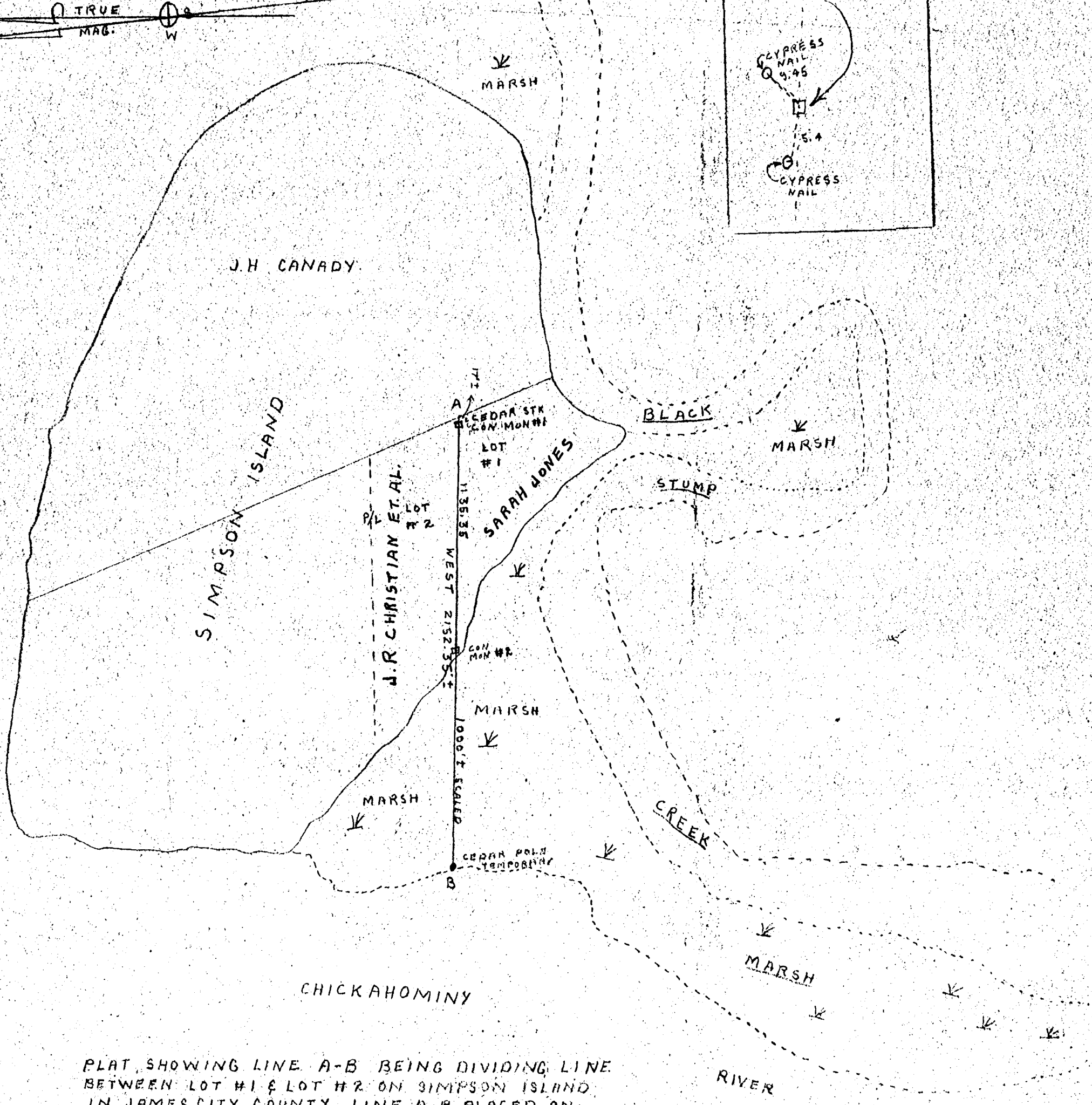
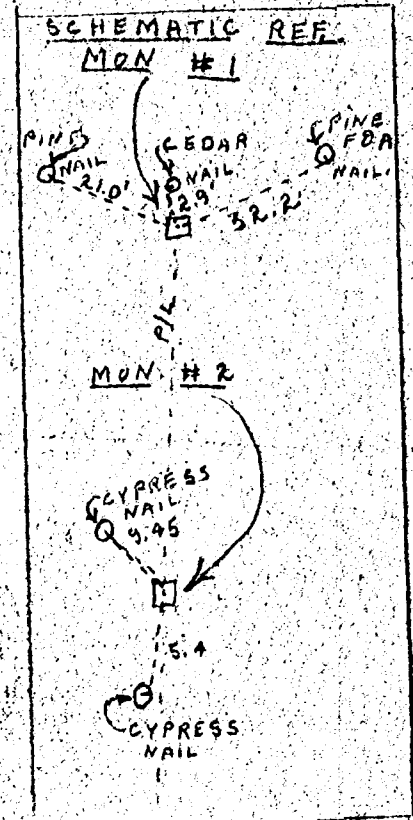
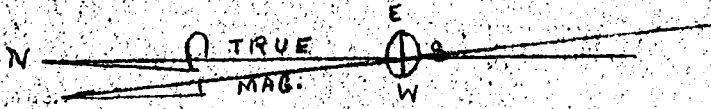
NOTE: DUE WEST ESTABLISHED BY MAGNETIC CORRECTION OF 6° 15' CLOCKWISE
 SIMPSON ISLAND SKETCHED FROM AERIAL MAP

Sarah E. Jones

vs:

John R. Christian

Wales Christian



PLAT SHOWING LINE A-B BEING DIVIDING LINE BETWEEN LOT #1 & LOT #2 ON SIMPSON ISLAND IN JAMES CITY COUNTY. LINE A-B PLACED ON GROUND AS DIRECTED BY COURT ORDER SURVEYED MARCH 2, 1954 BY W.D. THOMAS C.L.S. # 579 SCALE 1/5000
 W.D. Thomas