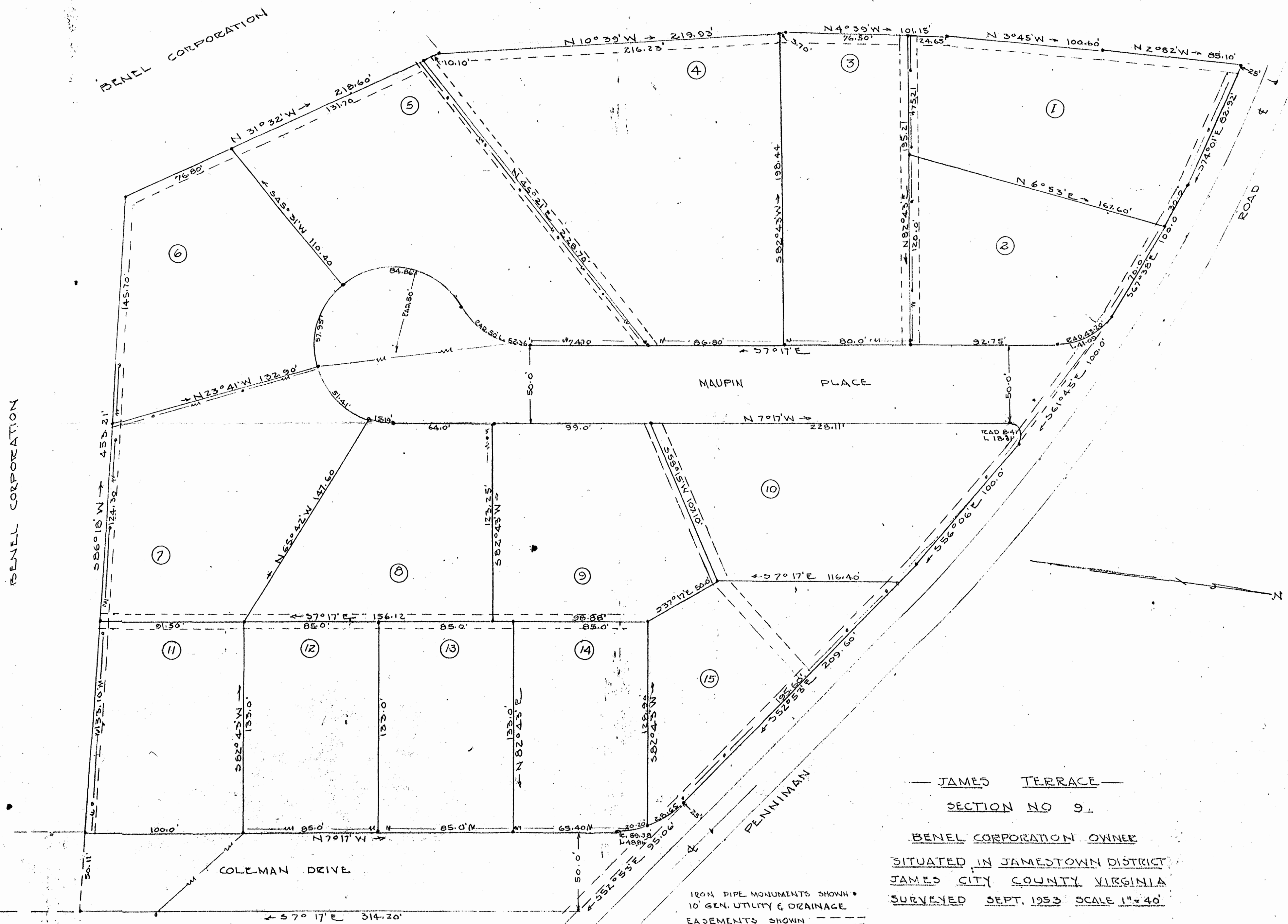


JAMES TERRACE SECTION #5

64



BENELL CORPORATION

BENELL CORPORATION

ROAD

MAUPIN PLACE

COLEMAN DRIVE

PENNIMAN

TRUSTEES BAPTIST CHURCH

— JAMES TERRACE —
SECTION NO 9.

BENELL CORPORATION OWNER
SITUATED IN JAMESTOWN DISTRICT
JAMES CITY COUNTY VIRGINIA
SURVEYED SEPT. 1953 SCALE 1" = 40'

IRON PIPE MONUMENTS SHOWN •
10' GEN. UTILITY & DRAINAGE
EASEMENTS SHOWN - - - -
ELEC. POLE LINE EASEMENTS, SHOWN W • W
TEL. POLE LINE " " " " " " " "