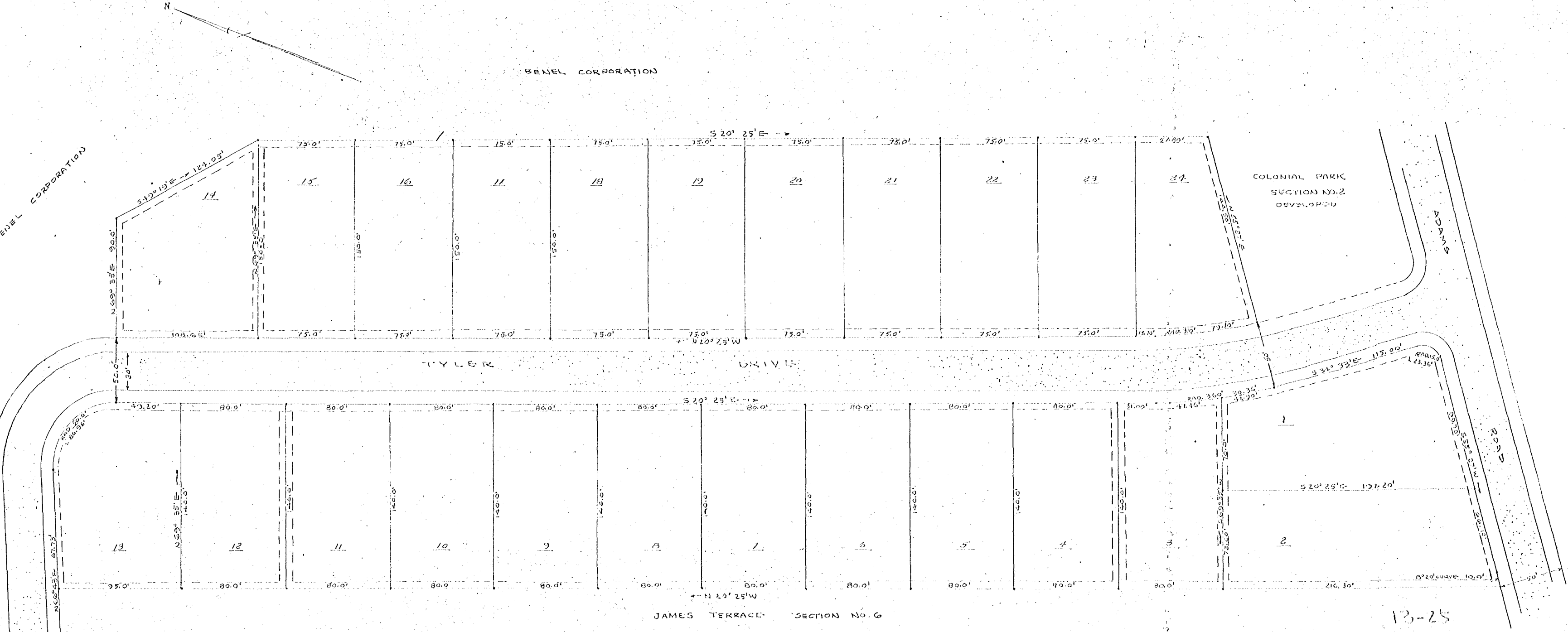


BENEL CORPORATION

BENEL CORPORATION



Recorded Sept. 17, 1952
 in
 D. B. 48 -page
W. Blawie clerk

JAMES CITY COUNTY VIRGINIA
 JAMES TERRACE DEVELOPMENT
 BENEL CORPORATION - OWNER
 PLAT SHOWING SURVEY OF LOTS
 SECTION No. 7
 JULY 7 1952

NOTE:-
 GENERAL UTILITY EASEMENTS 5' IN WIDTH
 ARE RETAINED & SHOWN THUS - - - - -

SCALE 1" = 40'

W. Blawie
 111