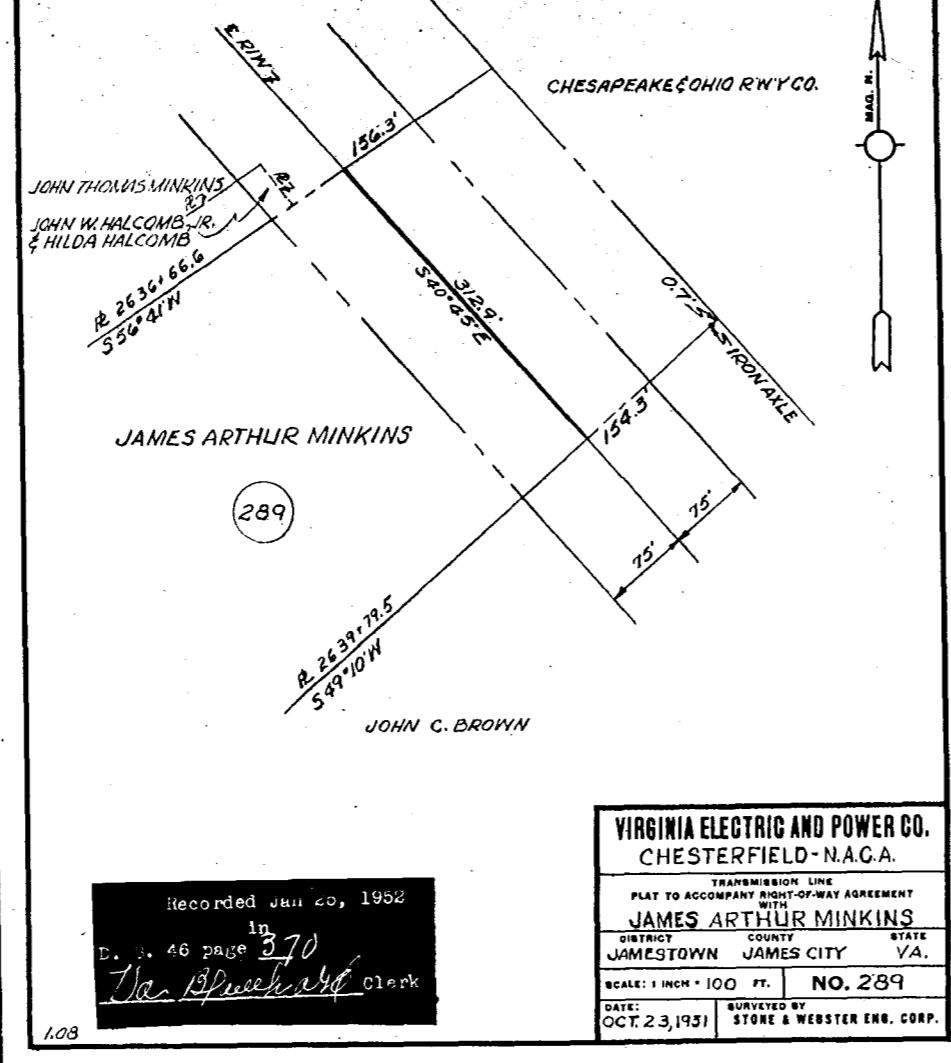


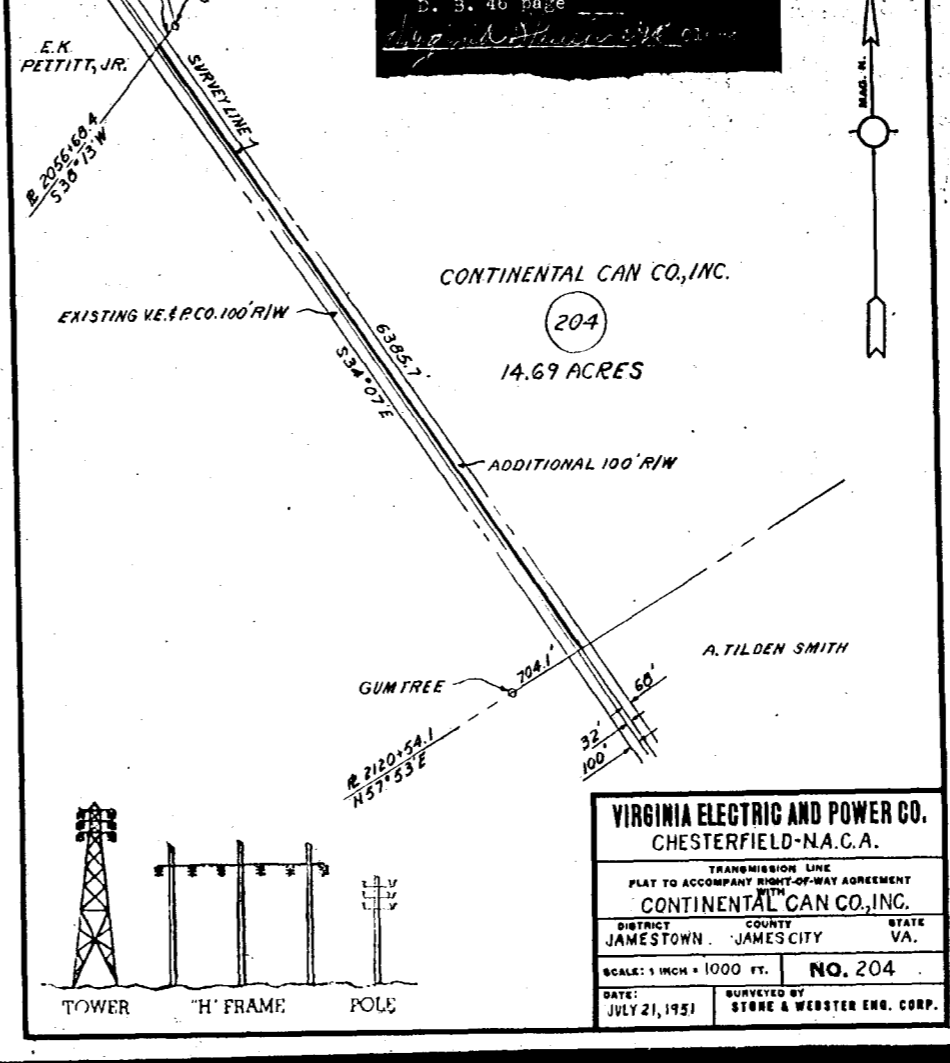
Recorded Jan 25, 1952  
in  
D. B. 46 page 364  
*The Bluebird* Clerk

**VIRGINIA ELECTRIC AND POWER CO.**  
CHESTERFIELD-N.A.C.A.  
TRANSMISSION LINE  
PLAT TO ACCOMPANY RIGHT-OF-WAY AGREEMENT  
WITH  
**WILLIAM WALLACE**  
DISTRICT COUNTY STATE  
JAMESTOWN JAMES CITY VA.  
SCALE: 1 INCH = 40 FT. **NO. 285**  
DATE: OCT. 25, 1951 SURVEYED BY  
STONE & WEBSTER ENG. CORP.



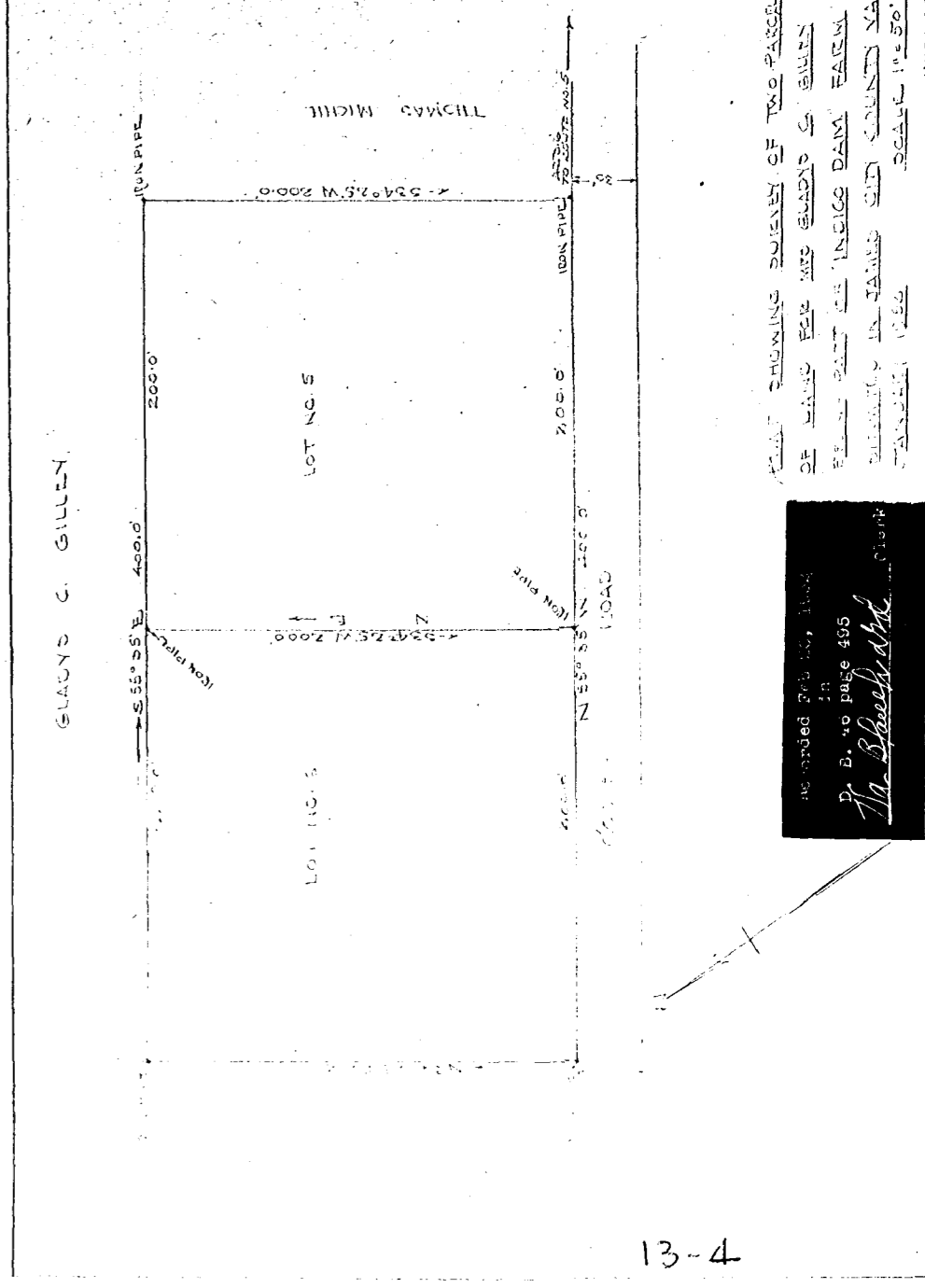
Recorded Jan 31, 1952  
in  
D. B. 46 page 370  
*The Bluebird* Clerk

**VIRGINIA ELECTRIC AND POWER CO.**  
CHESTERFIELD-N.A.C.A.  
TRANSMISSION LINE  
PLAT TO ACCOMPANY RIGHT-OF-WAY AGREEMENT  
WITH  
**JAMES ARTHUR MINKINS**  
DISTRICT COUNTY STATE  
JAMESTOWN JAMES CITY VA.  
SCALE: 1 INCH = 100 FT. **NO. 289**  
DATE: OCT. 23, 1951 SURVEYED BY  
STONE & WEBSTER ENG. CORP.

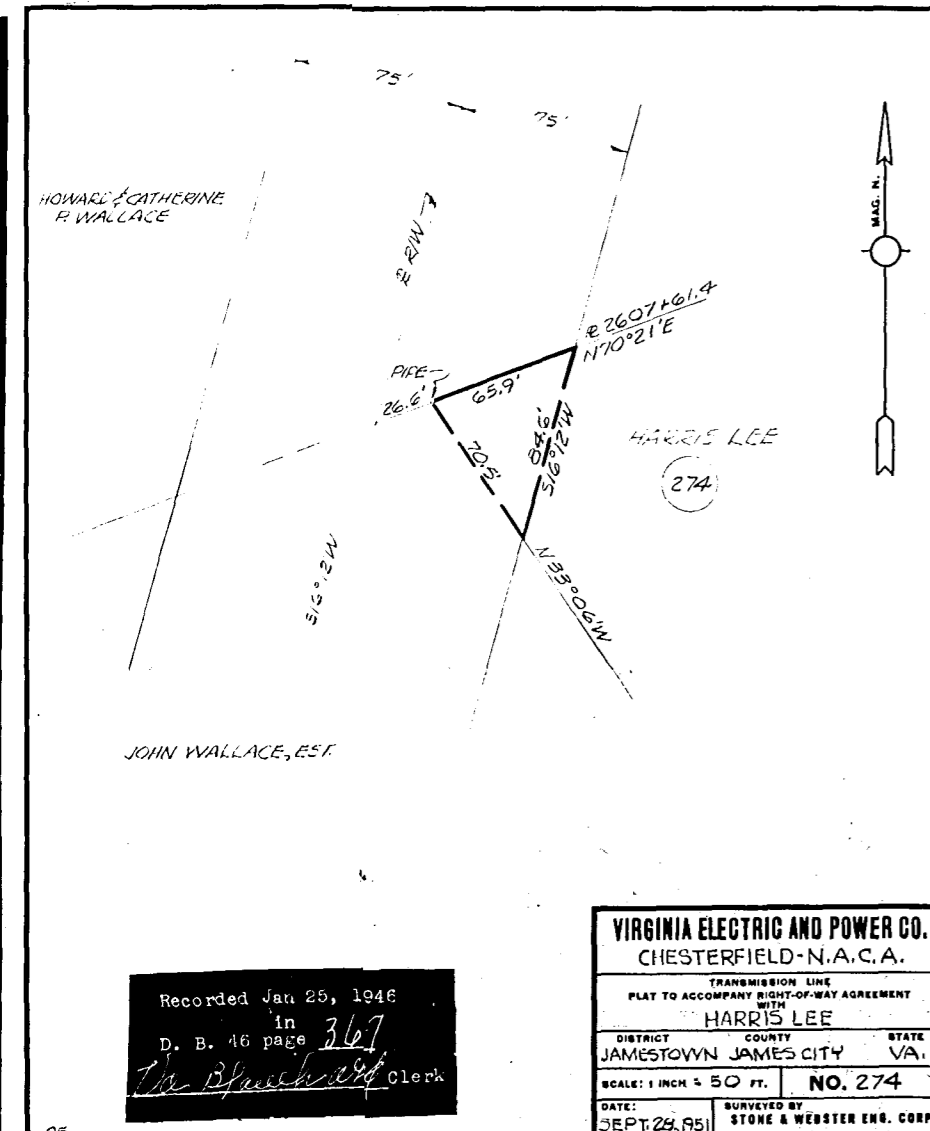


Recorded Jan 31, 1952  
in  
D. B. 46 page 370  
*The Bluebird* Clerk

**VIRGINIA ELECTRIC AND POWER CO.**  
CHESTERFIELD-N.A.C.A.  
TRANSMISSION LINE  
PLAT TO ACCOMPANY RIGHT-OF-WAY AGREEMENT  
WITH  
**CONTINENTAL CAN CO., INC.**  
DISTRICT COUNTY STATE  
JAMESTOWN JAMES CITY VA.  
SCALE: 1 INCH = 1000 FT. **NO. 204**  
DATE: JULY 21, 1951 SURVEYED BY  
STONE & WEBSTER ENG. CORP.

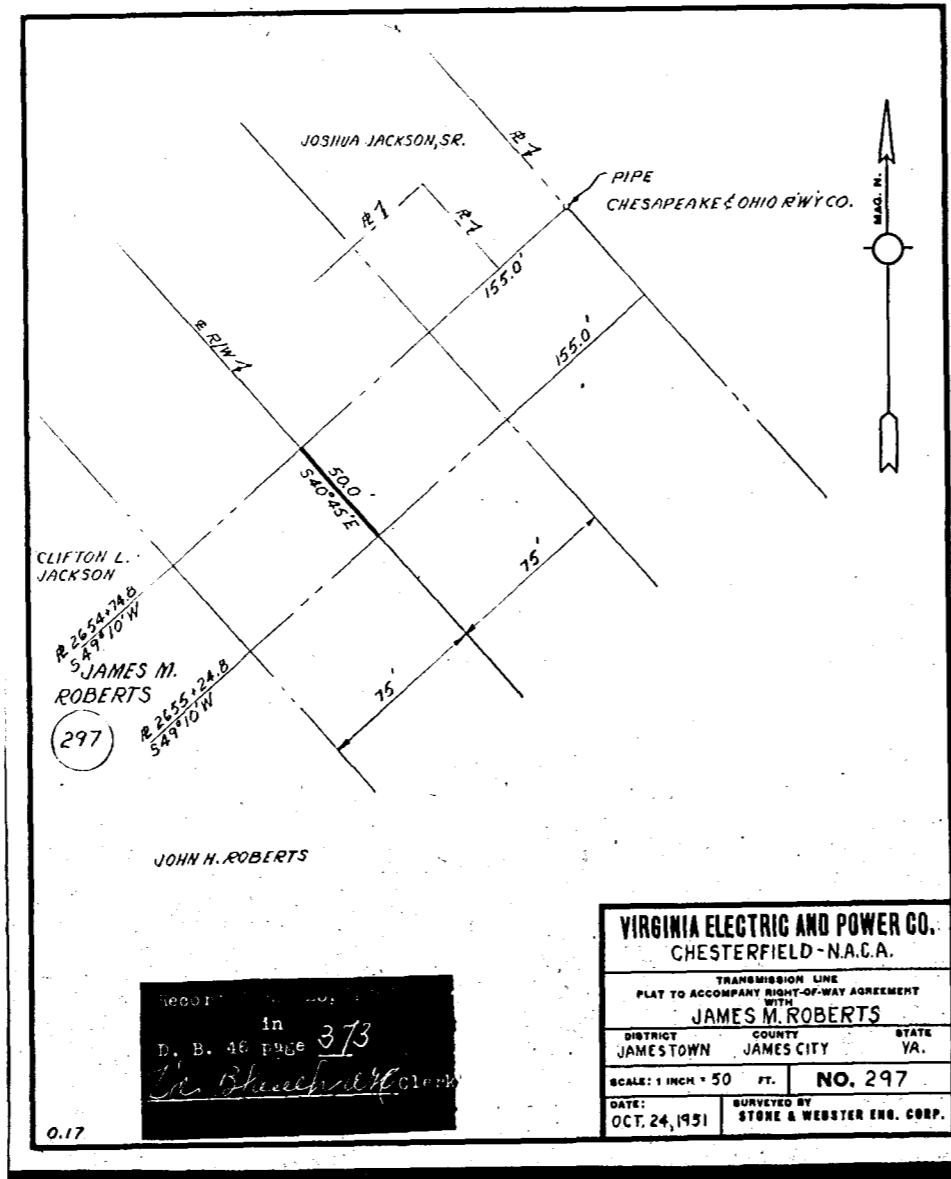


Recorded Feb 1, 1952  
in  
D. B. 46 page 495  
*The Bluebird* Clerk



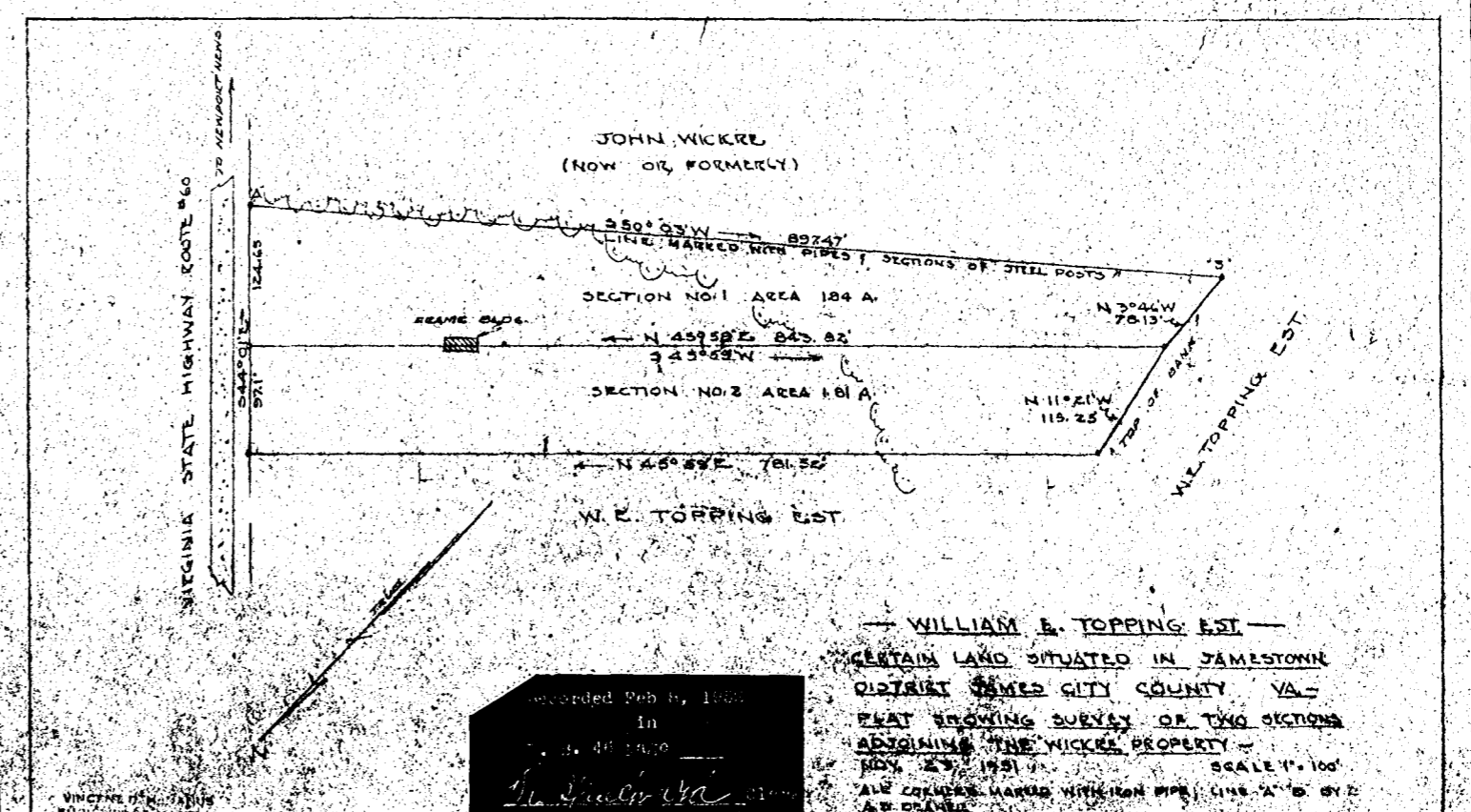
Recorded Jan 29, 1946  
in  
D. B. 46 page 367  
*The Bluebird* Clerk

**VIRGINIA ELECTRIC AND POWER CO.**  
CHESTERFIELD-N.A.C.A.  
TRANSMISSION LINE  
PLAT TO ACCOMPANY RIGHT-OF-WAY AGREEMENT  
WITH  
**HARRIS LEE**  
DISTRICT COUNTY STATE  
JAMESTOWN JAMES CITY VA.  
SCALE: 1 INCH = 50 FT. **NO. 274**  
DATE: SEPT. 28, 1951 SURVEYED BY  
STONE & WEBSTER ENG. CORP.



Recorded Jan 29, 1946  
in  
D. B. 46 page 373  
*The Bluebird* Clerk

**VIRGINIA ELECTRIC AND POWER CO.**  
CHESTERFIELD-N.A.C.A.  
TRANSMISSION LINE  
PLAT TO ACCOMPANY RIGHT-OF-WAY AGREEMENT  
WITH  
**JAMES M. ROBERTS**  
DISTRICT COUNTY STATE  
JAMESTOWN JAMES CITY VA.  
SCALE: 1 INCH = 50 FT. **NO. 297**  
DATE: OCT. 24, 1951 SURVEYED BY  
STONE & WEBSTER ENG. CORP.



Recorded Feb 4, 1952  
in  
D. B. 46 page 495  
*The Bluebird* Clerk

**VIRGINIA ELECTRIC AND POWER CO.**  
CHESTERFIELD-N.A.C.A.  
TRANSMISSION LINE  
PLAT TO ACCOMPANY RIGHT-OF-WAY AGREEMENT  
WITH  
**WILLIAM B. TOPPING, EST.**  
DISTRICT COUNTY STATE  
JAMESTOWN JAMES CITY VA.  
SCALE: 1" = 100'  
DATE: FEB. 23, 1951 SURVEYED BY  
STONE & WEBSTER ENG. CORP.