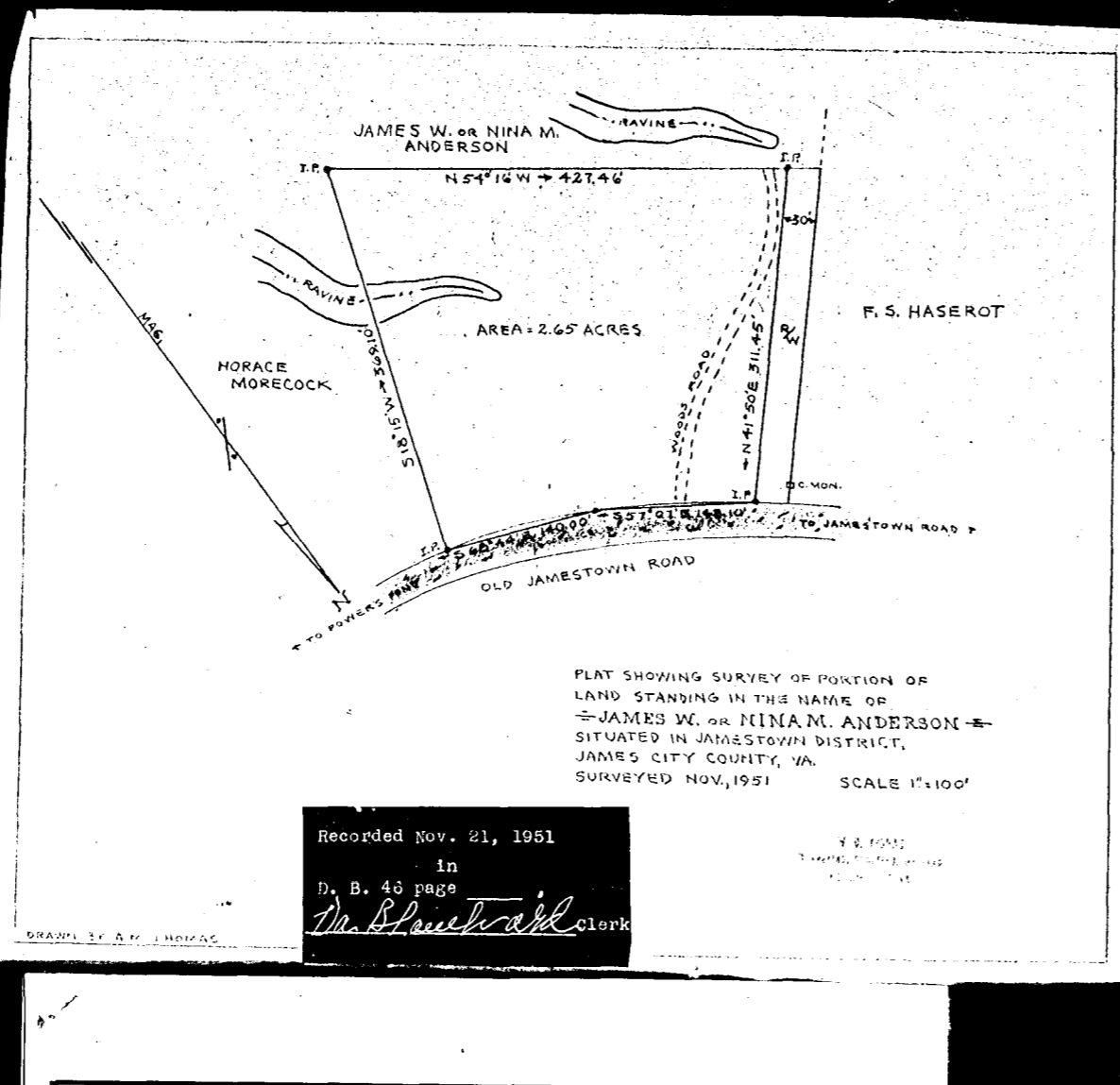
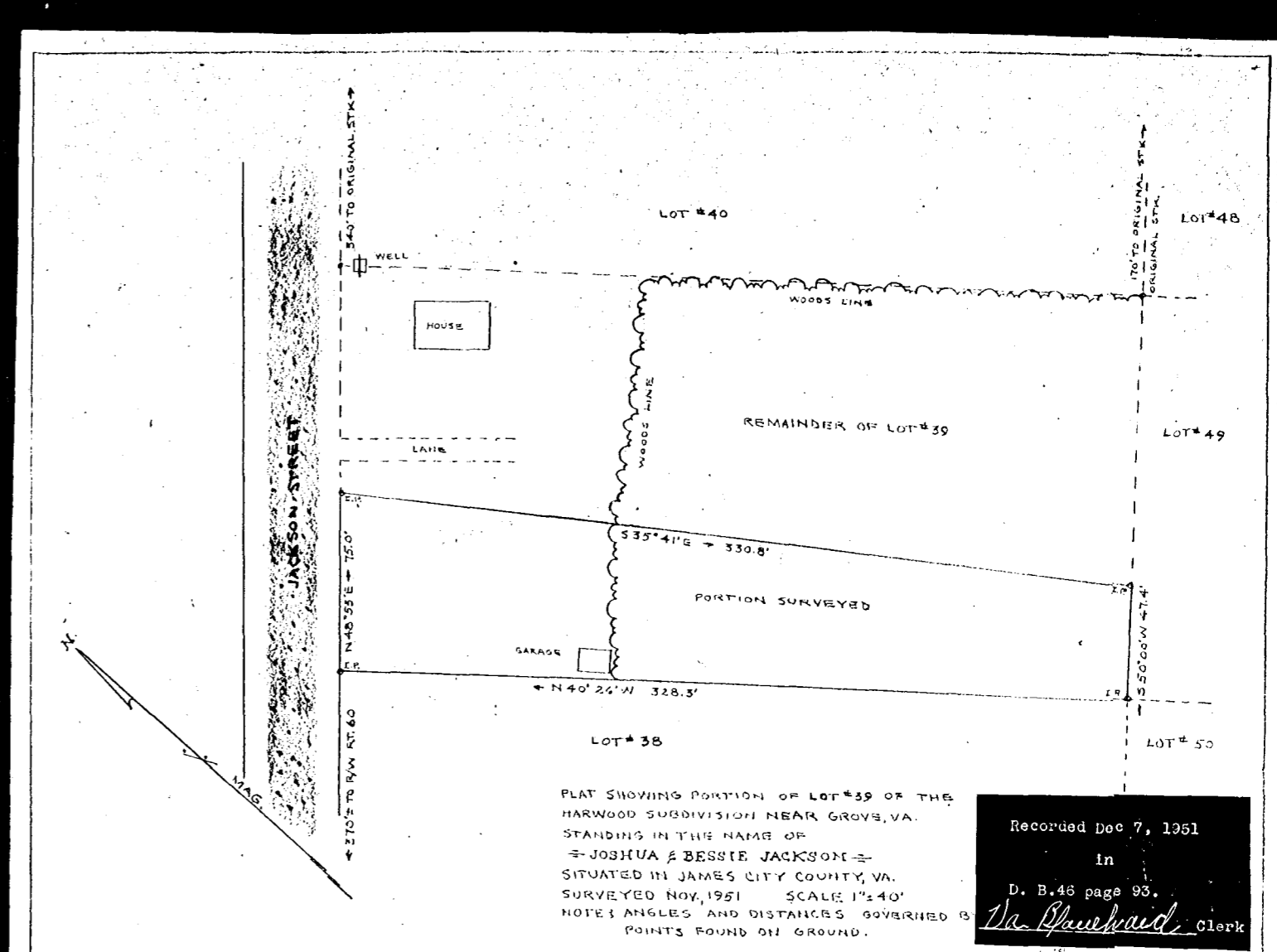


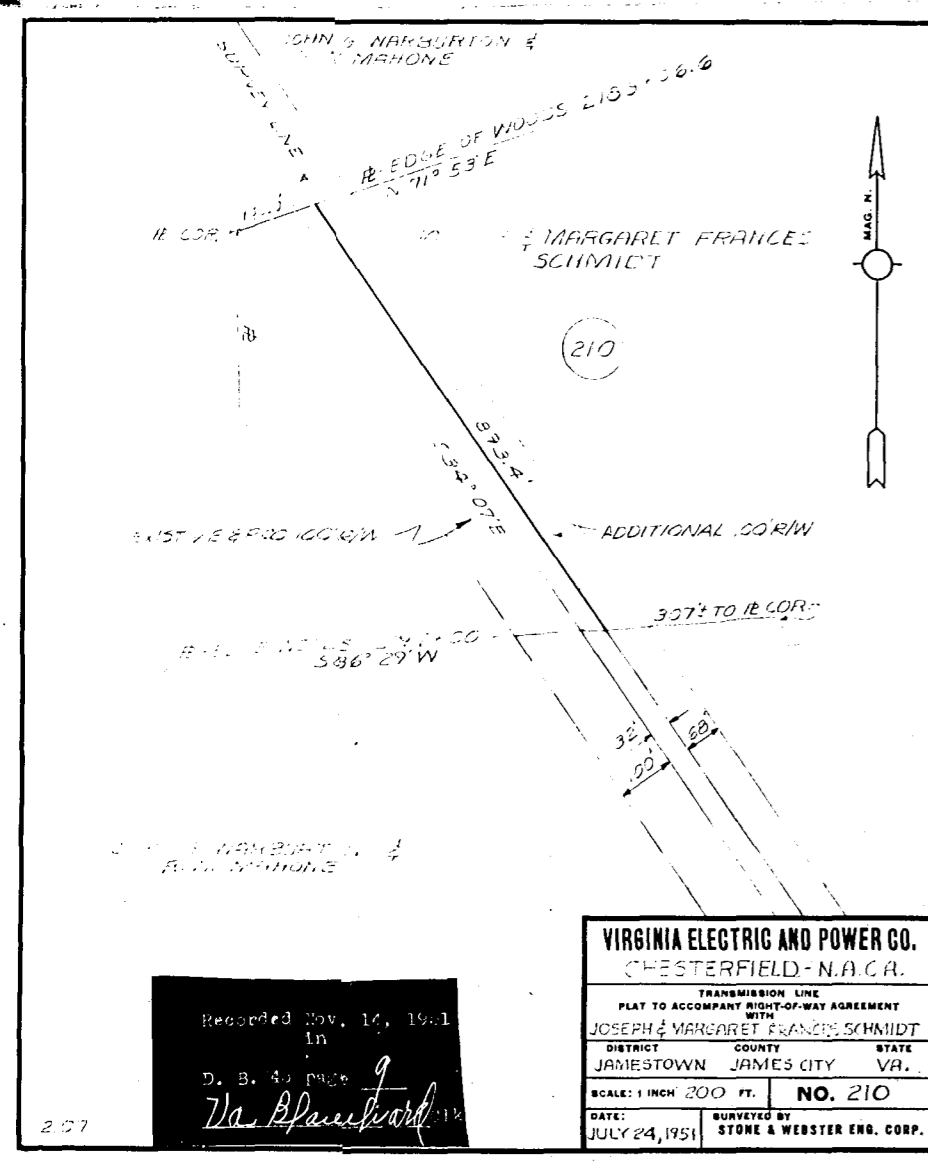
VIRGINIA ELECTRIC AND POWER CO.
 CHESTERFIELD - N.A.C.A.
 TRANSMISSION LINE
 PLAT TO ACCOMPANY RIGHT-OF-WAY AGREEMENT
 WITH
 ARTHUR D. MALLORY, ET AL.
 DISTRICT COUNTY STATE
 JAMESTOWN JAMES CITY VA.
 SCALE: 1 INCH = 60 FT. NO. 212
 DATE: JULY 24, 1951 SURVEYED BY: STONE & WEBSTER ENG. CORP.



Recorded Nov. 21, 1951
 in
 D. B. 45 page
Va. Blanchard Clerk

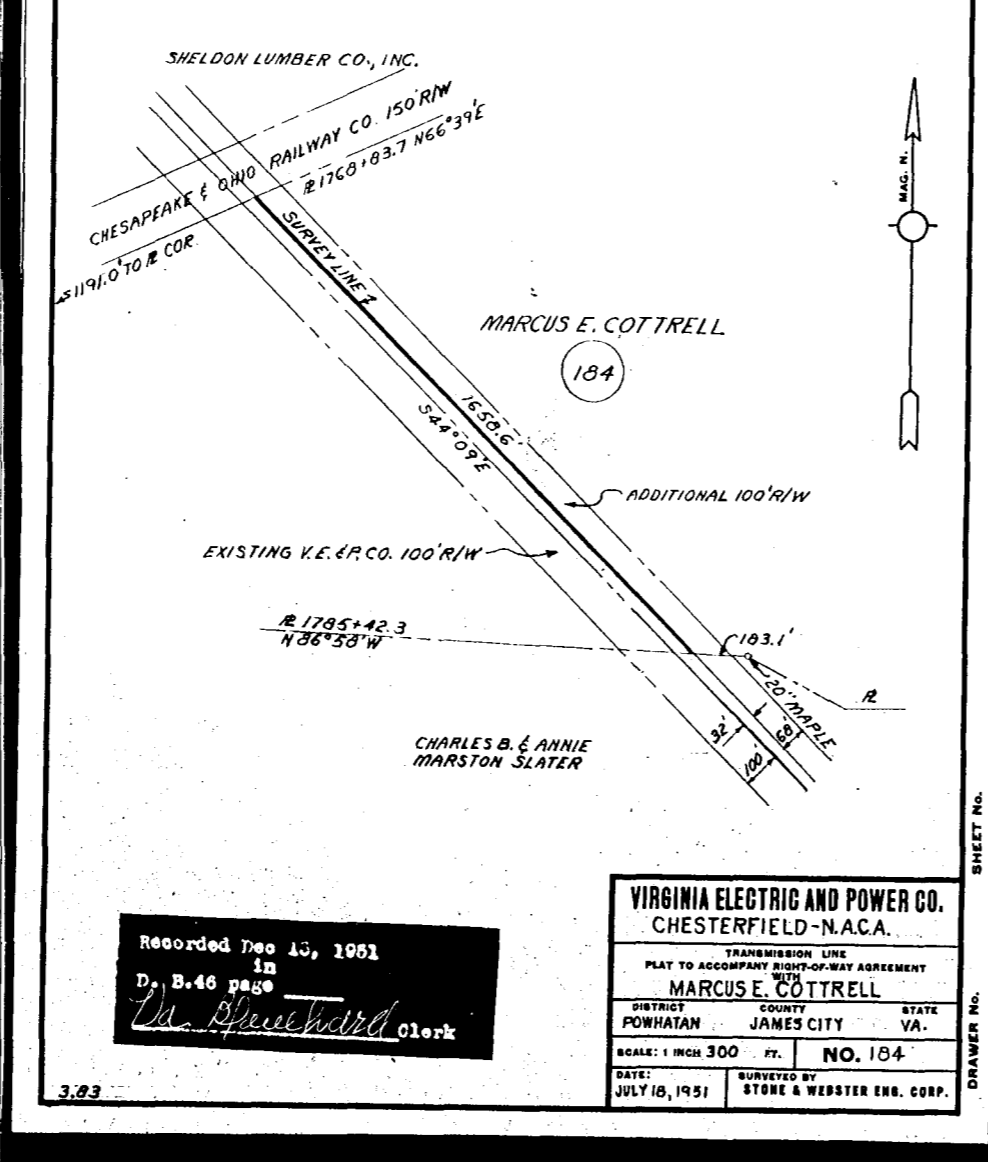


Recorded Dec 7, 1951
 in
 D. B. 48 page 93.
Va. Blanchard Clerk



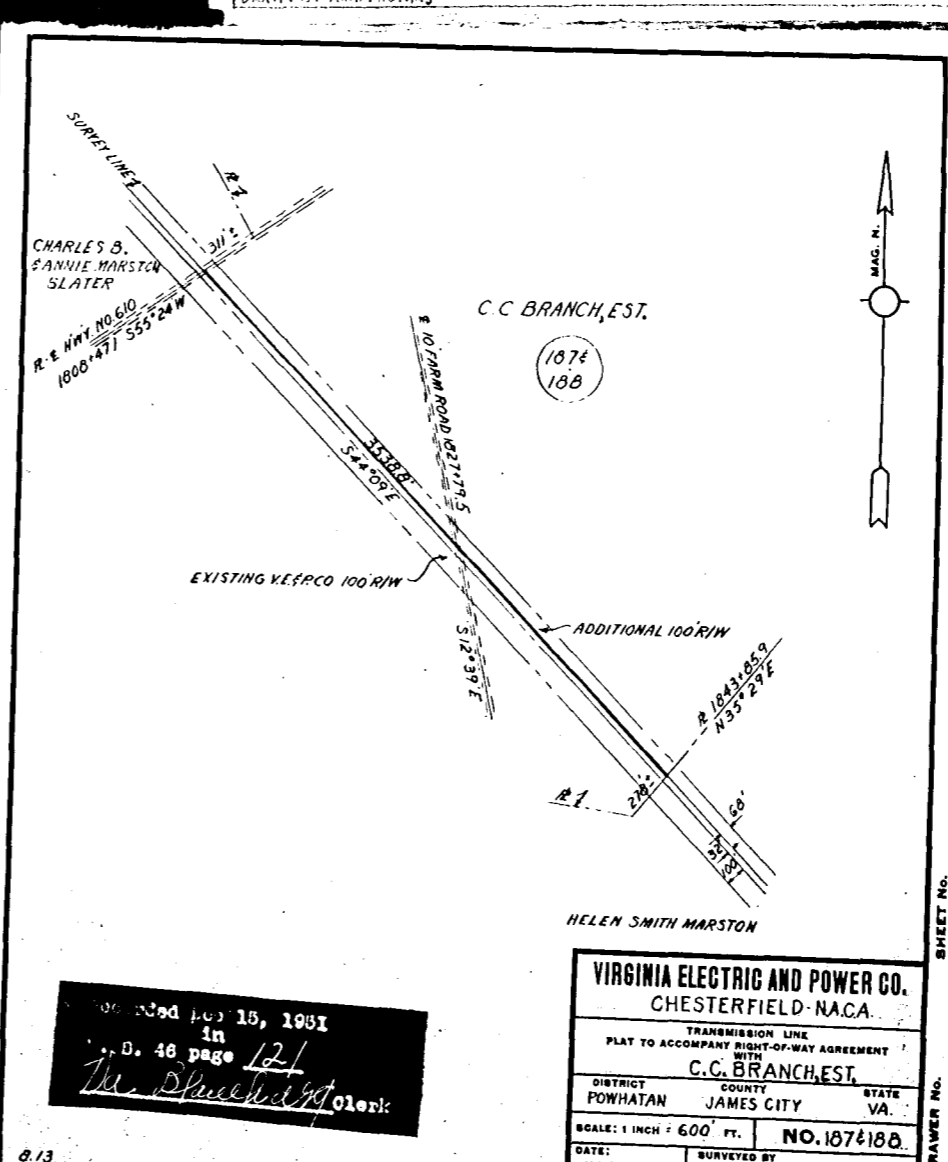
VIRGINIA ELECTRIC AND POWER CO.
 CHESTERFIELD - N.A.C.A.
 TRANSMISSION LINE
 PLAT TO ACCOMPANY RIGHT-OF-WAY AGREEMENT
 WITH
 JOSEPH & MARGARET FRANCES SCHMIDT
 DISTRICT COUNTY STATE
 JAMESTOWN JAMES CITY VA.
 SCALE: 1 INCH = 200 FT. NO. 210
 DATE: JULY 24, 1951 SURVEYED BY: STONE & WEBSTER ENG. CORP.

Recorded Nov. 14, 1951
 in
 D. B. 45 page
Va. Blanchard Clerk



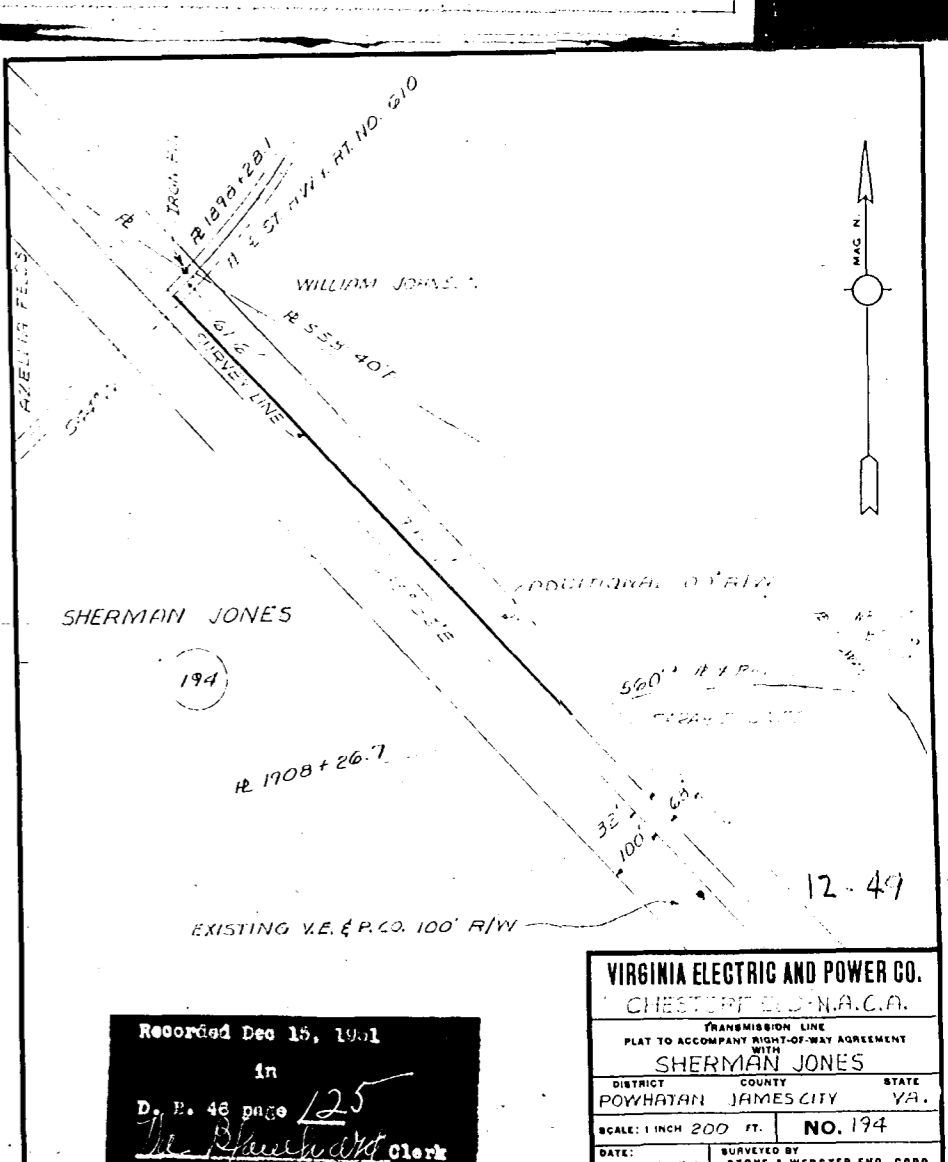
VIRGINIA ELECTRIC AND POWER CO.
 CHESTERFIELD - N.A.C.A.
 TRANSMISSION LINE
 PLAT TO ACCOMPANY RIGHT-OF-WAY AGREEMENT
 WITH
 MARCUS E. COTTRELL
 DISTRICT COUNTY STATE
 POWHATAN JAMES CITY VA.
 SCALE: 1 INCH = 300 FT. NO. 184
 DATE: JULY 18, 1951 SURVEYED BY: STONE & WEBSTER ENG. CORP.

Recorded Dec 15, 1951
 in
 D. B. 46 page
Va. Blanchard Clerk



VIRGINIA ELECTRIC AND POWER CO.
 CHESTERFIELD - N.A.C.A.
 TRANSMISSION LINE
 PLAT TO ACCOMPANY RIGHT-OF-WAY AGREEMENT
 WITH
 C.C. BRANCH, EST.
 DISTRICT COUNTY STATE
 POWHATAN JAMES CITY VA.
 SCALE: 1 INCH = 600 FT. NO. 187 & 188
 DATE: JULY 19, 1951 SURVEYED BY: STONE & WEBSTER ENG. CORP.

Recorded Dec 15, 1951
 in
 D. B. 46 page 124
Va. Blanchard Clerk



VIRGINIA ELECTRIC AND POWER CO.
 CHESTERFIELD - N.A.C.A.
 TRANSMISSION LINE
 PLAT TO ACCOMPANY RIGHT-OF-WAY AGREEMENT
 WITH
 SHERMAN JONES
 DISTRICT COUNTY STATE
 POWHATAN JAMES CITY VA.
 SCALE: 1 INCH = 200 FT. NO. 194
 DATE: JULY 18, 1951 SURVEYED BY: STONE & WEBSTER ENG. CORP.

Recorded Dec 15, 1951
 in
 D. B. 46 page 125
Va. Blanchard Clerk