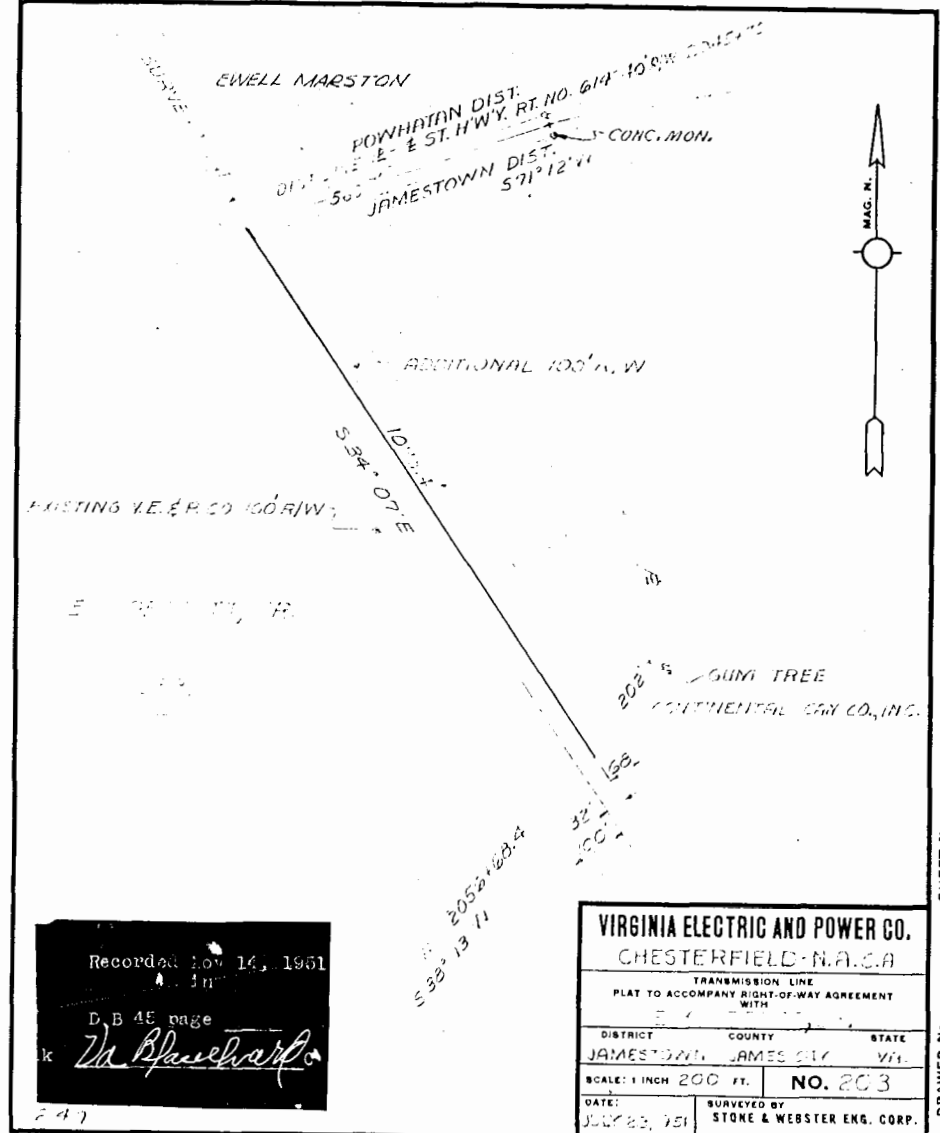


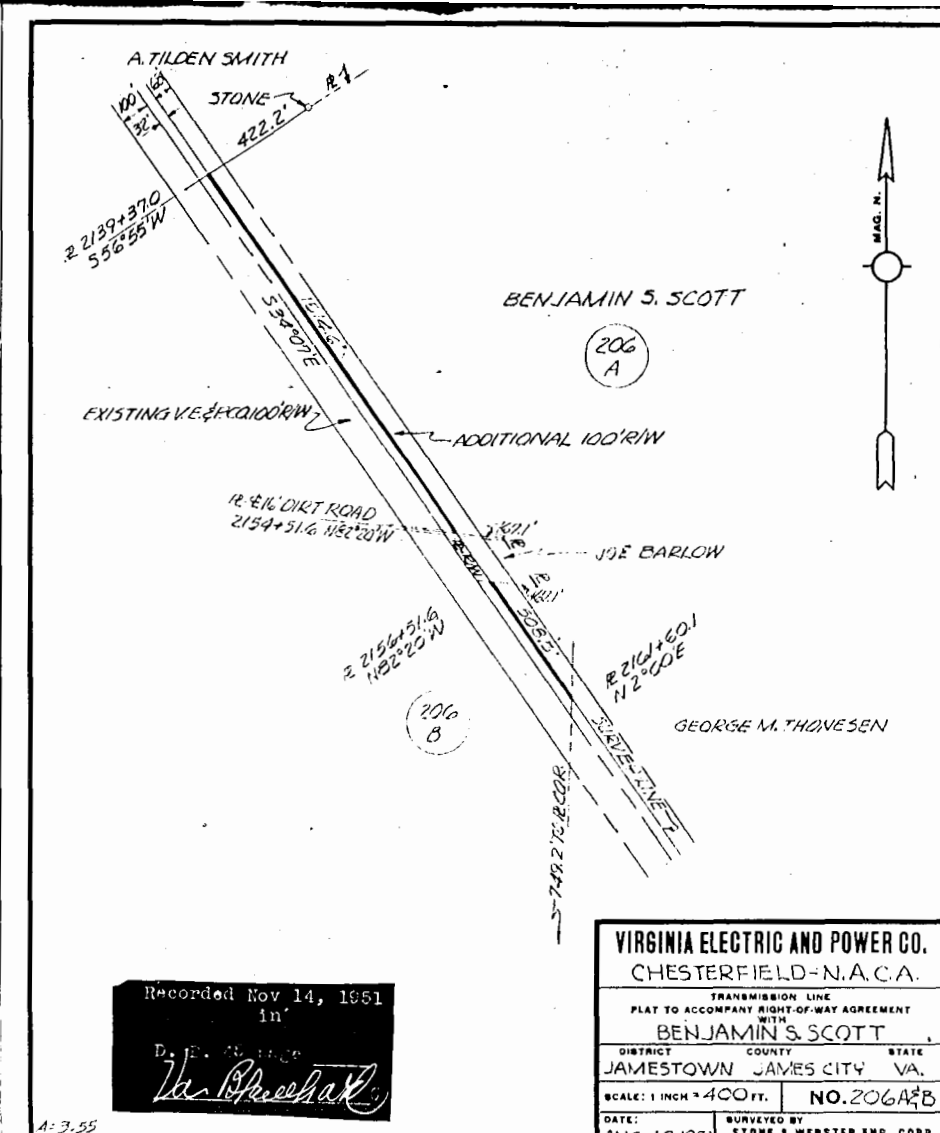
Recorded Nov 14, 1951  
in  
D. B. 45 page  
*The Bluebird* clk

**VIRGINIA ELECTRIC AND POWER CO.**  
CHESTERFIELD-N.A.C.A.  
TRANSMISSION LINE  
PLAT TO ACCOMPANY RIGHT-OF-WAY AGREEMENT  
WITH  
**GEORGE A. MARSTON**  
DISTRICT COUNTY STATE  
POWHATAN JAMES CITY VA.  
SCALE: 1 INCH = 200 FT. NO. 198  
DATE: JULY 18, 1951 SURVEYED BY: STONE & WEBSTER ENG. CORP.



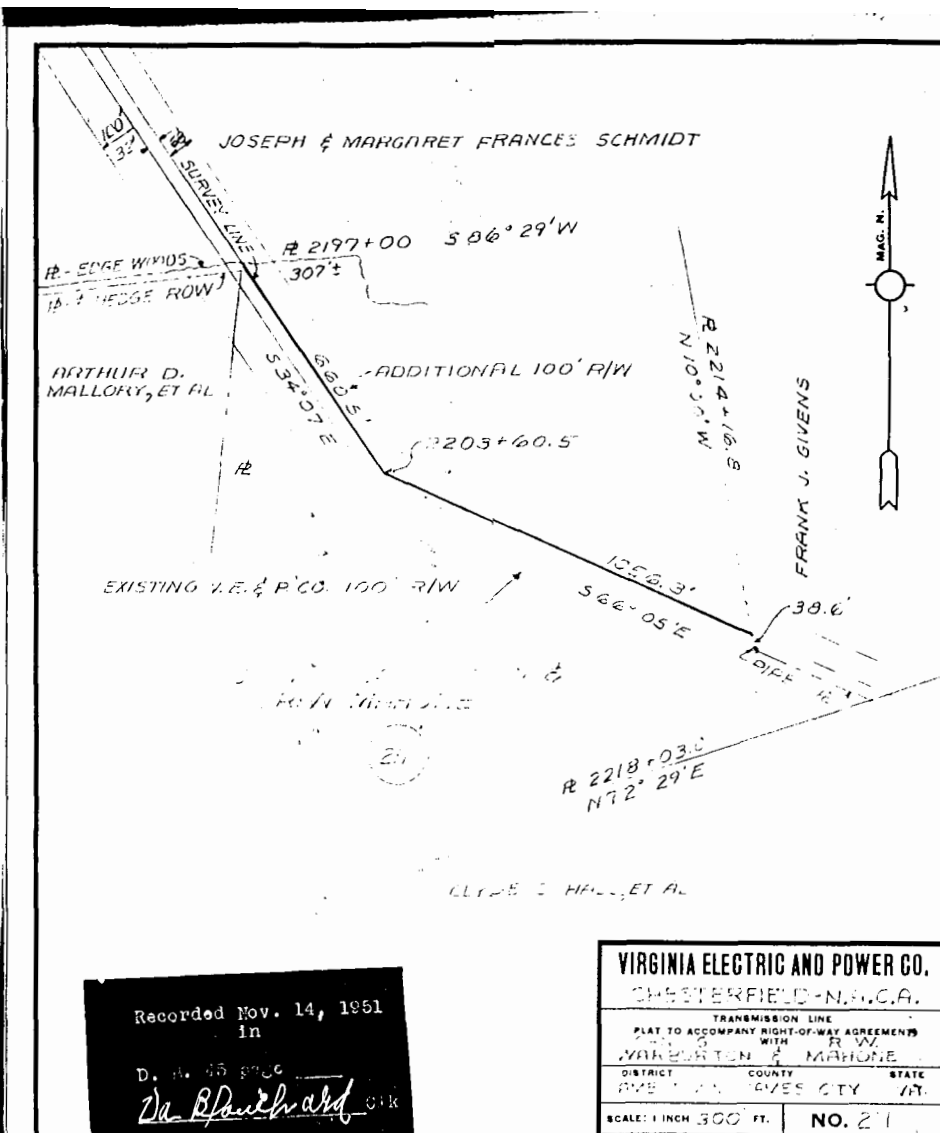
Recorded Nov 14, 1951  
in  
D. B. 45 page  
*The Bluebird* clk

**VIRGINIA ELECTRIC AND POWER CO.**  
CHESTERFIELD-N.A.C.A.  
TRANSMISSION LINE  
PLAT TO ACCOMPANY RIGHT-OF-WAY AGREEMENT  
WITH  
**BENJAMIN S. SCOTT**  
DISTRICT COUNTY STATE  
JAMESTOWN JAMES CITY VA.  
SCALE: 1 INCH = 200 FT. NO. 203  
DATE: JULY 22, 1951 SURVEYED BY: STONE & WEBSTER ENG. CORP.



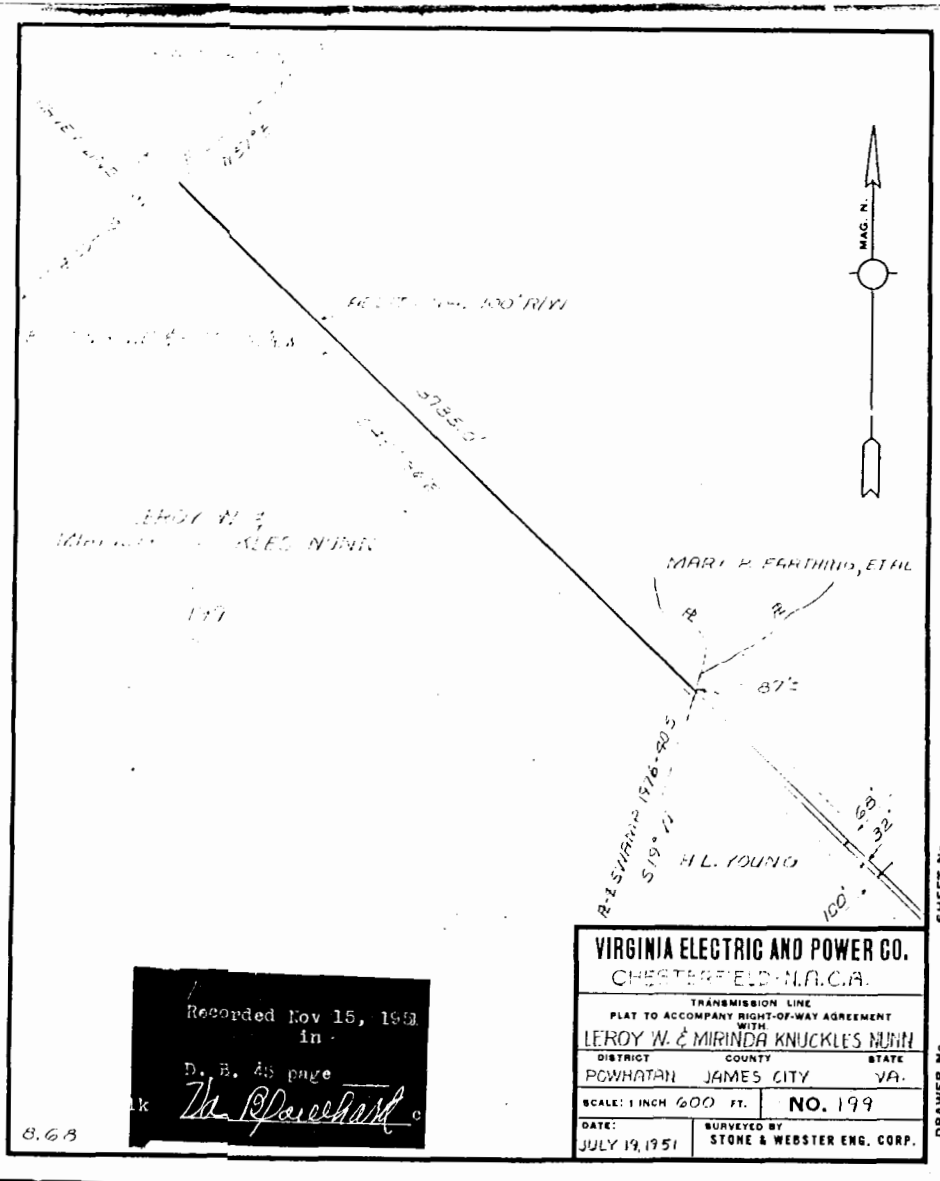
Recorded Nov 14, 1951  
in  
D. B. 45 page  
*The Bluebird* clk

**VIRGINIA ELECTRIC AND POWER CO.**  
CHESTERFIELD-N.A.C.A.  
TRANSMISSION LINE  
PLAT TO ACCOMPANY RIGHT-OF-WAY AGREEMENT  
WITH  
**BENJAMIN S. SCOTT**  
DISTRICT COUNTY STATE  
JAMESTOWN JAMES CITY VA.  
SCALE: 1 INCH = 400 FT. NO. 206A & B  
DATE: AUG. 13, 1951 SURVEYED BY: STONE & WEBSTER ENG. CORP.



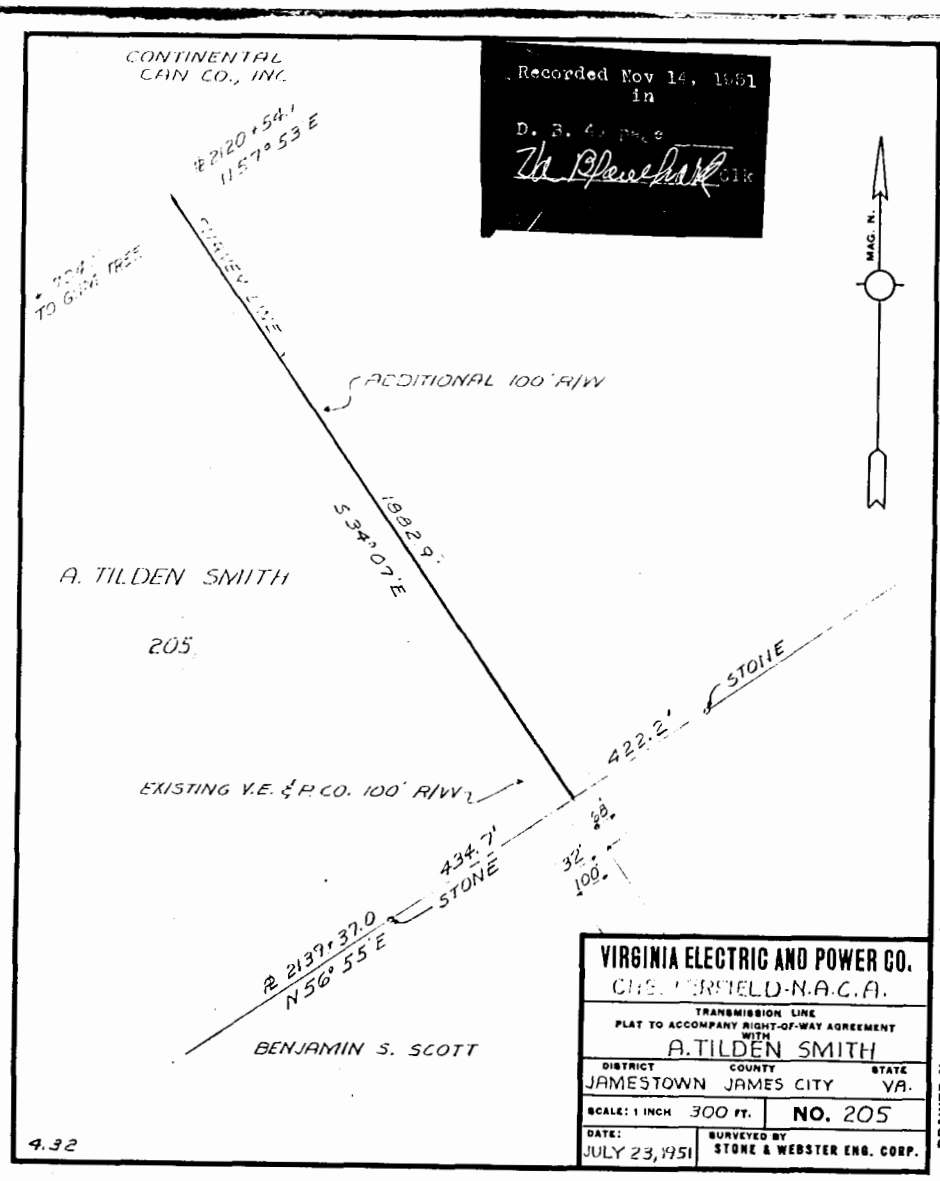
Recorded Nov. 14, 1951  
in  
D. B. 45 page  
*The Bluebird* clk

**VIRGINIA ELECTRIC AND POWER CO.**  
CHESTERFIELD-N.A.C.A.  
TRANSMISSION LINE  
PLAT TO ACCOMPANY RIGHT-OF-WAY AGREEMENT  
WITH  
**ARTHUR D. MALLORY, ET AL**  
DISTRICT COUNTY STATE  
JAMESTOWN JAMES CITY VA.  
SCALE: 1 INCH = 300 FT. NO. 209  
DATE: JULY 24, 1951 SURVEYED BY: STONE & WEBSTER ENG. CORP.



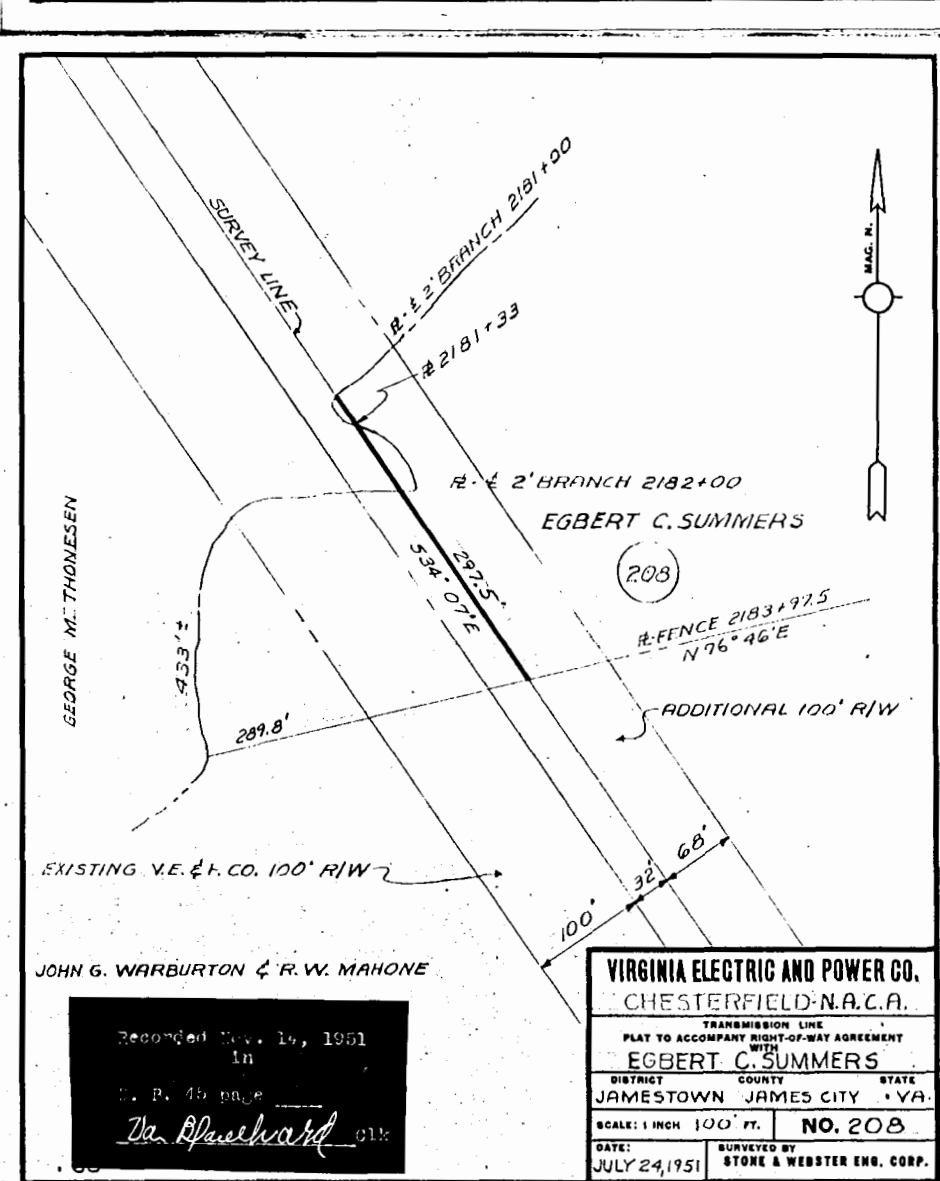
Recorded Nov 15, 1951  
in  
D. B. 45 page  
*The Bluebird* clk

**VIRGINIA ELECTRIC AND POWER CO.**  
CHESTERFIELD-N.A.C.A.  
TRANSMISSION LINE  
PLAT TO ACCOMPANY RIGHT-OF-WAY AGREEMENT  
WITH  
**LEROY W. & MIRINDA KNUCKLES NUNIN**  
DISTRICT COUNTY STATE  
POWHATAN JAMES CITY VA.  
SCALE: 1 INCH = 300 FT. NO. 199  
DATE: JULY 19, 1951 SURVEYED BY: STONE & WEBSTER ENG. CORP.



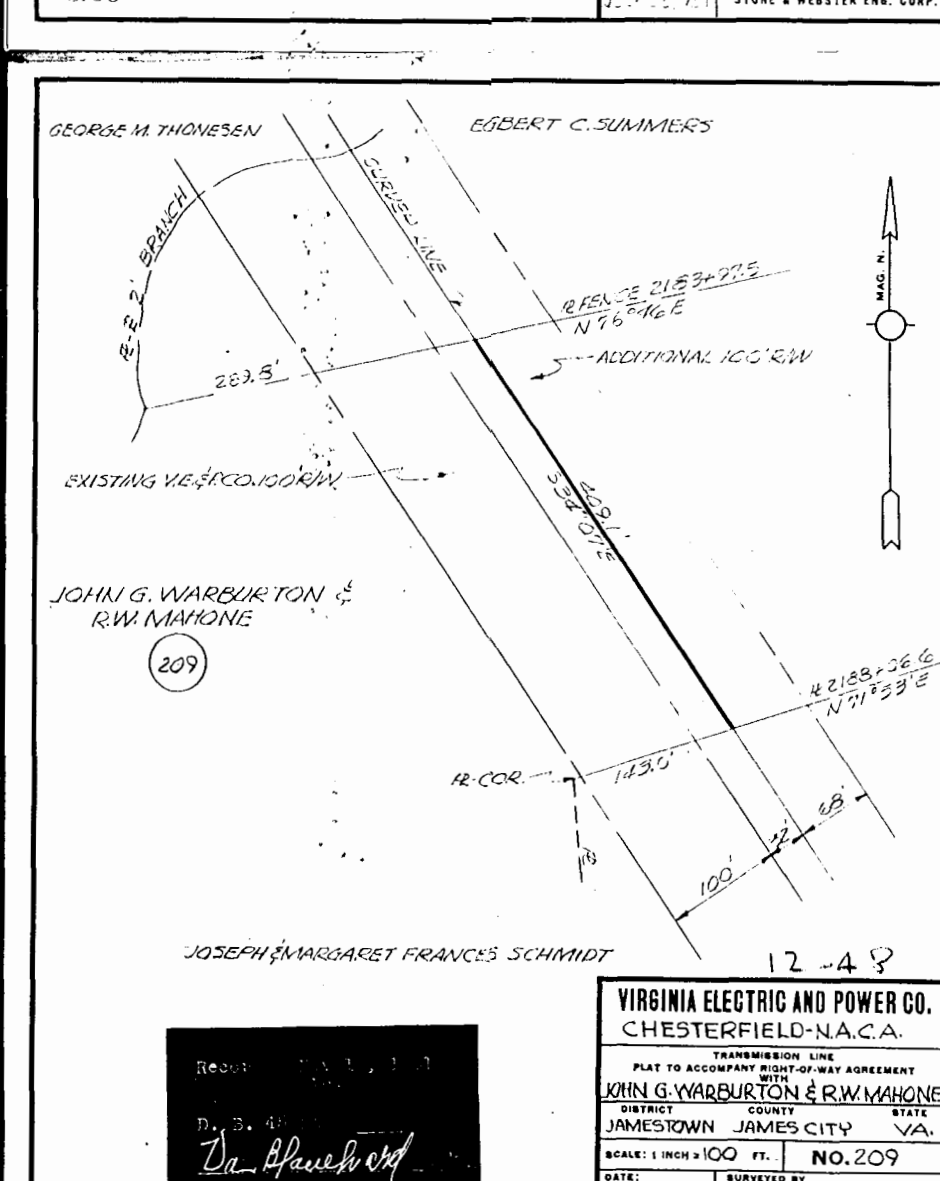
Recorded Nov 14, 1951  
in  
D. B. 45 page  
*The Bluebird* clk

**VIRGINIA ELECTRIC AND POWER CO.**  
CHESTERFIELD-N.A.C.A.  
TRANSMISSION LINE  
PLAT TO ACCOMPANY RIGHT-OF-WAY AGREEMENT  
WITH  
**A. TILDEN SMITH**  
DISTRICT COUNTY STATE  
JAMESTOWN JAMES CITY VA.  
SCALE: 1 INCH = 300 FT. NO. 205  
DATE: JULY 23, 1951 SURVEYED BY: STONE & WEBSTER ENG. CORP.



Recorded Nov. 14, 1951  
in  
D. B. 45 page  
*The Bluebird* clk

**VIRGINIA ELECTRIC AND POWER CO.**  
CHESTERFIELD-N.A.C.A.  
TRANSMISSION LINE  
PLAT TO ACCOMPANY RIGHT-OF-WAY AGREEMENT  
WITH  
**EGBERT C. SUMMERS**  
DISTRICT COUNTY STATE  
JAMESTOWN JAMES CITY VA.  
SCALE: 1 INCH = 100 FT. NO. 208  
DATE: JULY 24, 1951 SURVEYED BY: STONE & WEBSTER ENG. CORP.



Recorded Nov. 14, 1951  
in  
D. B. 45 page  
*The Bluebird* clk

**VIRGINIA ELECTRIC AND POWER CO.**  
CHESTERFIELD-N.A.C.A.  
TRANSMISSION LINE  
PLAT TO ACCOMPANY RIGHT-OF-WAY AGREEMENT  
WITH  
**JOHN G. WARBURTON & R.W. MAHONE**  
DISTRICT COUNTY STATE  
JAMESTOWN JAMES CITY VA.  
SCALE: 1 INCH = 100 FT. NO. 209  
DATE: JULY 24, 1951 SURVEYED BY: STONE & WEBSTER ENG. CORP.