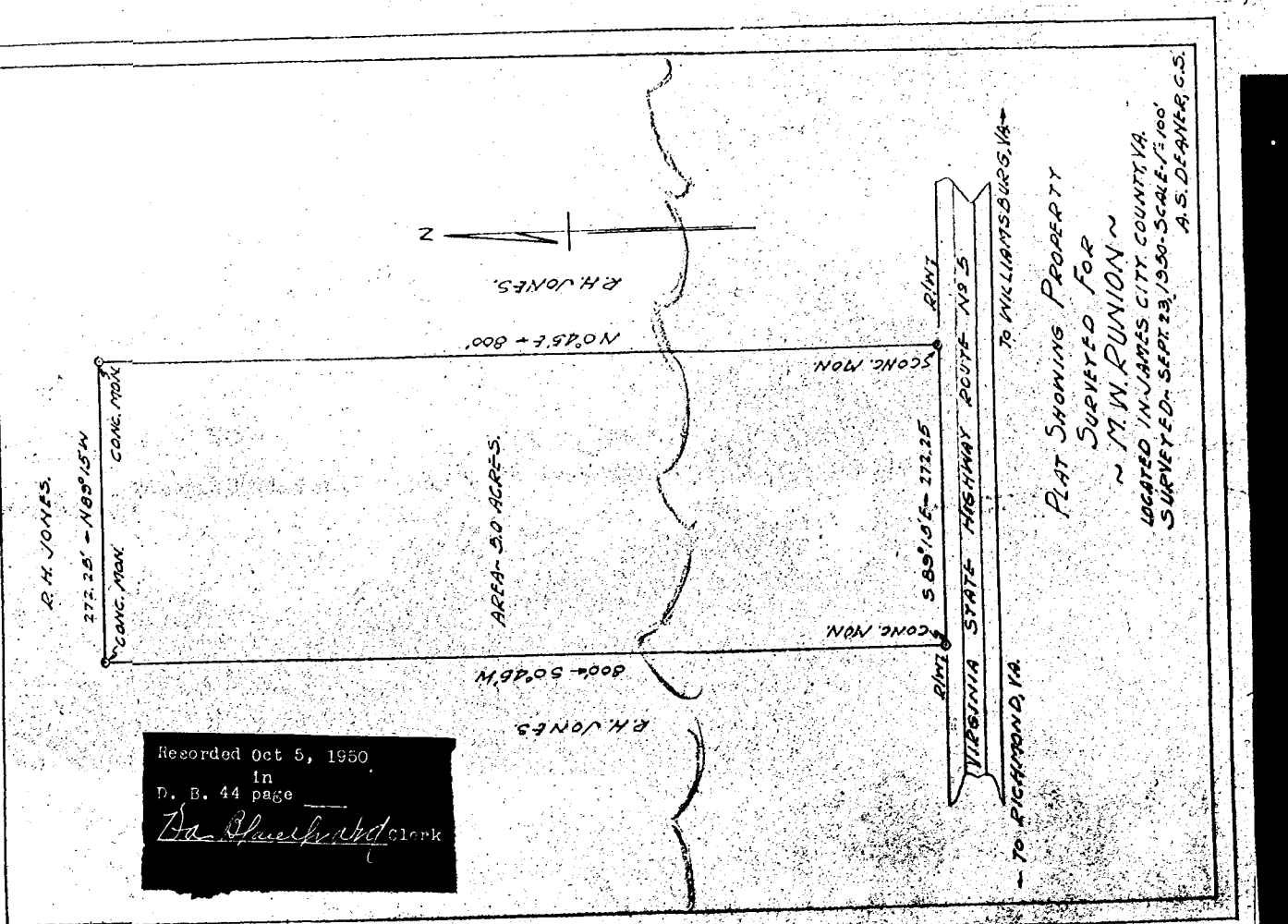


Recorded Sept. 20, 1950  
 Deed Book 43  
 Page 532-533  
 Virginia Plateland Clerk  
 By Gordon P. Miler  
 Deeds County

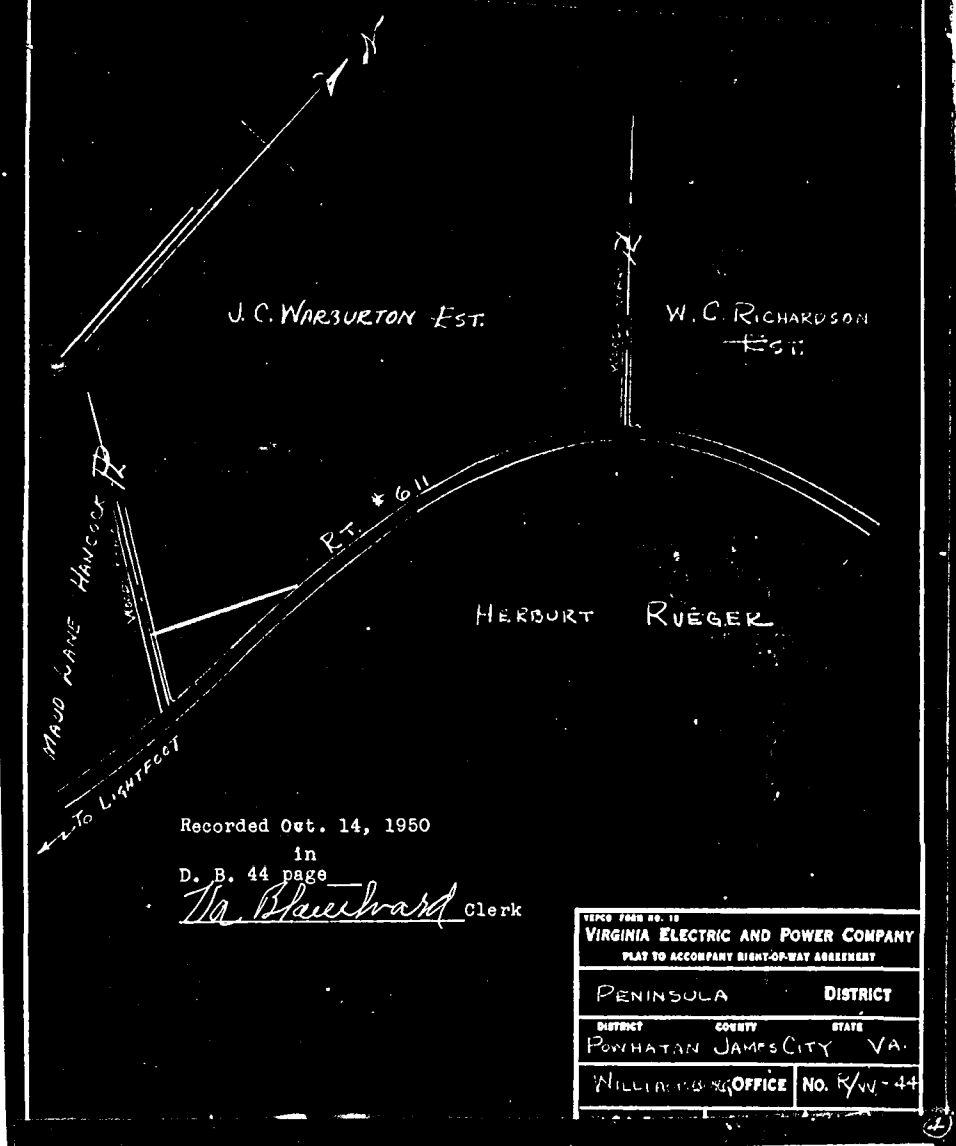
**PLAT SHOWING CERTAIN SECTIONS OF THE JOHN & EUGENE HOFFMEYER PROPERTIES**

SITUATED IN JAMES CITY COUNTY VA BASED AND COMPILED FROM PREVIOUS SURVEYS, AUG. 1950 SCALE 1" = 400'



Recorded Oct 5, 1950  
 In D. B. 44 page  
 Va. Blueward Clerk

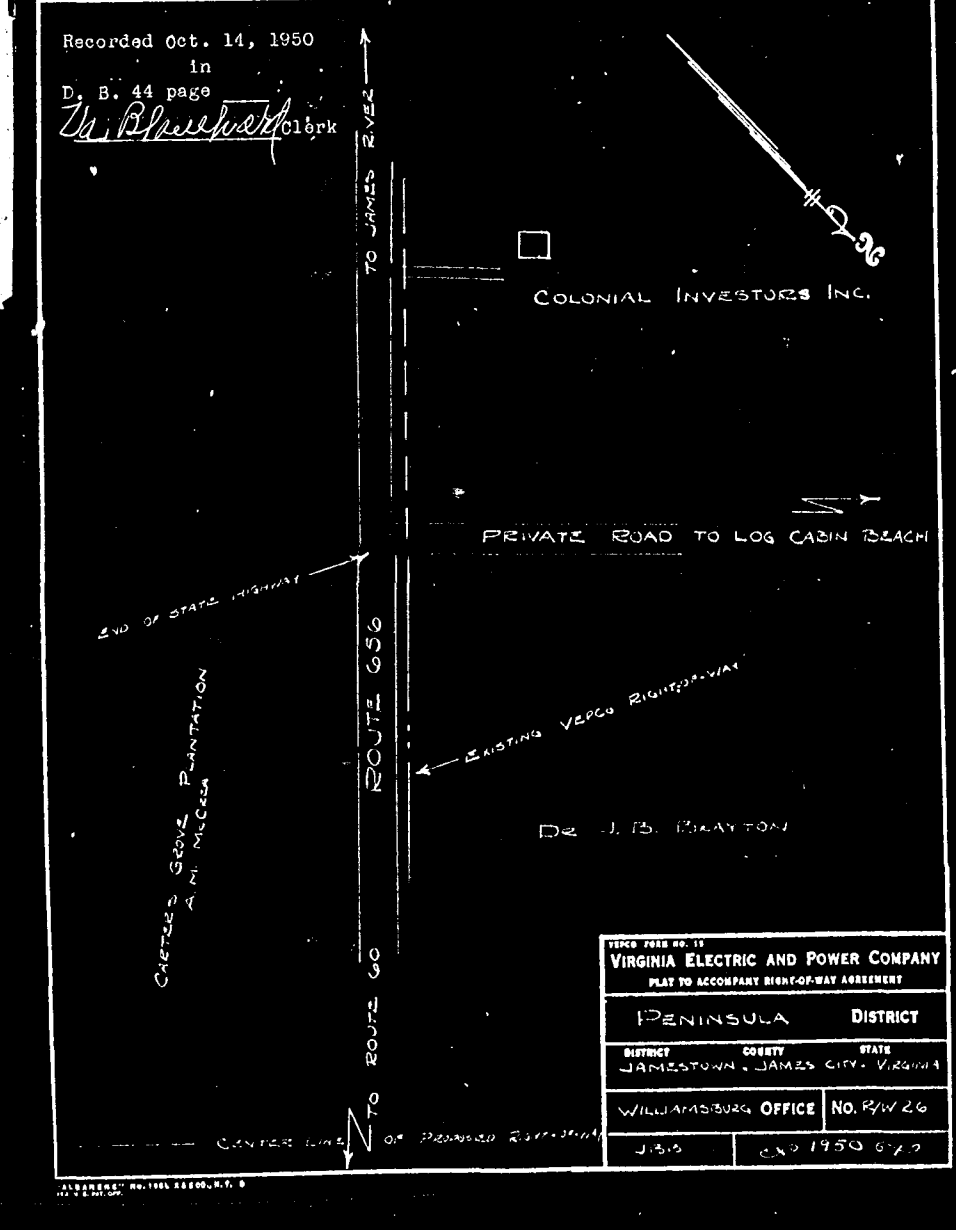
PLAT SHOWING PROPERTY SURVEYED FOR M.W. RUNION LOCATED IN JAMES CITY COUNTY VA. SURVEYED-SEPT. 23, 1950. SCALE 1" = 100' A.S. DEANER, C.S.



Recorded Oct. 14, 1950  
 in D. B. 44 page  
 Va. Blueward Clerk

TYPE PLAN NO. 13  
**VIRGINIA ELECTRIC AND POWER COMPANY**  
 PLAT TO ACCOMPANY RIGHT-OF-WAY AGREEMENT

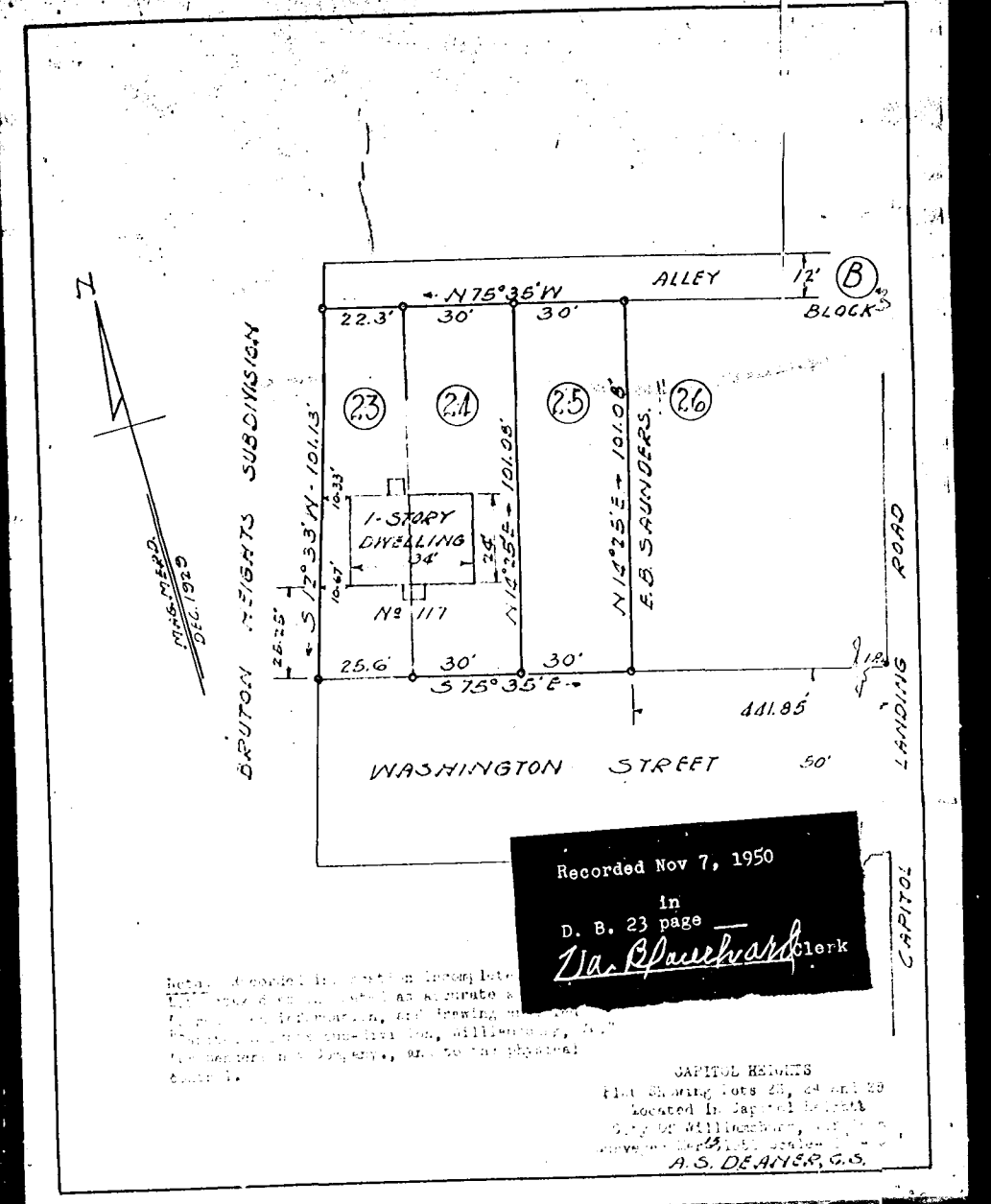
PENINSULA	DISTRICT
DISTRICT	COUNTY
POWHATAN	JAMES CITY
	STATE
	VA.
WILLIAMSBURG	OFFICE NO. RW-44



Recorded Oct. 14, 1950  
 in D. B. 44 page  
 Va. Blueward Clerk

TYPE PLAN NO. 13  
**VIRGINIA ELECTRIC AND POWER COMPANY**  
 PLAT TO ACCOMPANY RIGHT-OF-WAY AGREEMENT

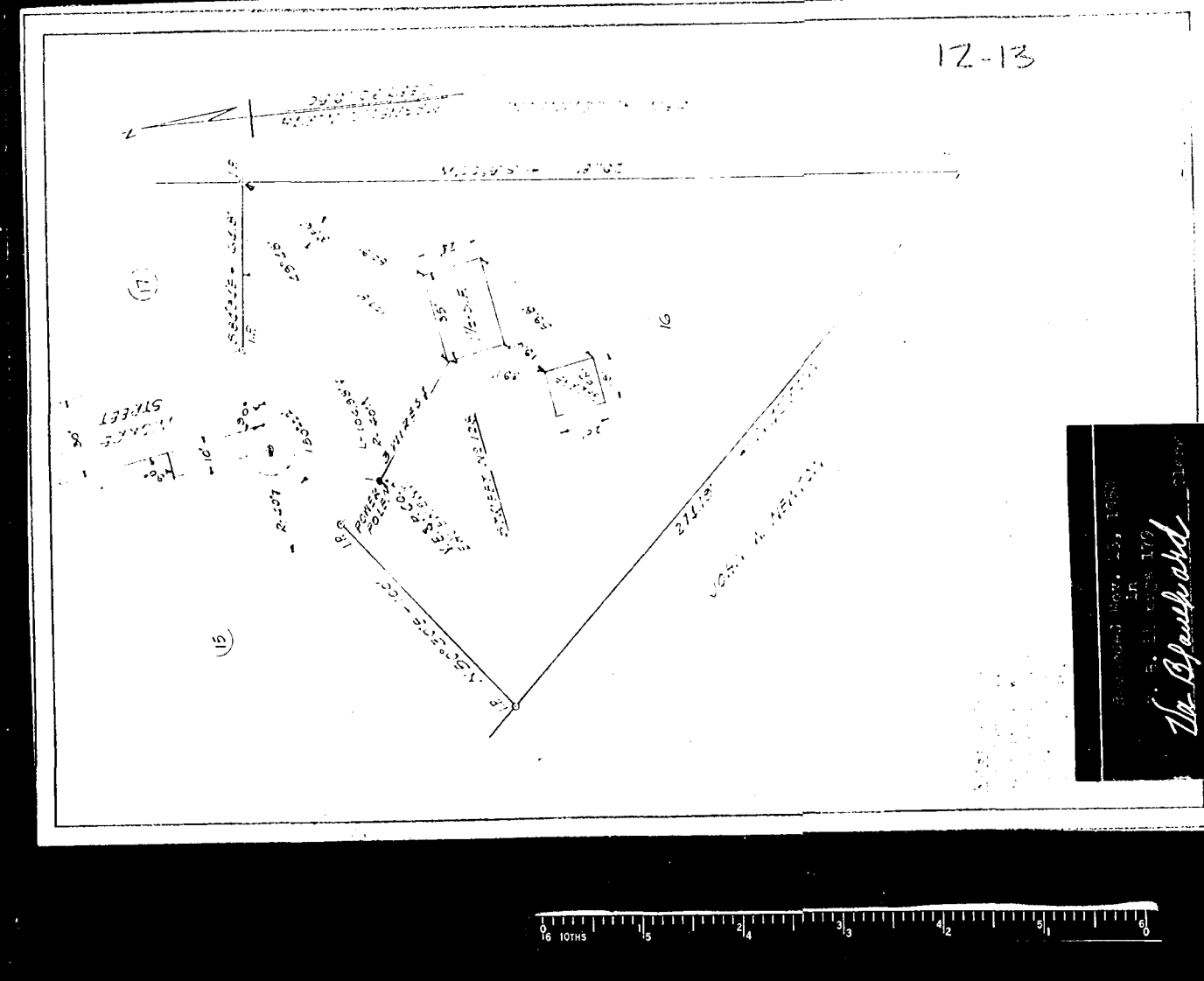
PENINSULA	DISTRICT
DISTRICT	COUNTY
JAMESTOWN	JAMES CITY
	STATE
	VA.
WILLIAMSBURG	OFFICE NO. RW 26



Recorded Nov 7, 1950  
 in D. B. 23 page  
 Va. Blueward Clerk

CAPITOL HEIGHTS  
 The showing lots 25, 26 and 28 located in map #11 located on map #411 of the City of Williamsburg, Virginia, as shown on map #411 of the City of Williamsburg, Virginia, and to the original owner.

A.S. DEANER, C.S.



Va. Blueward Clerk