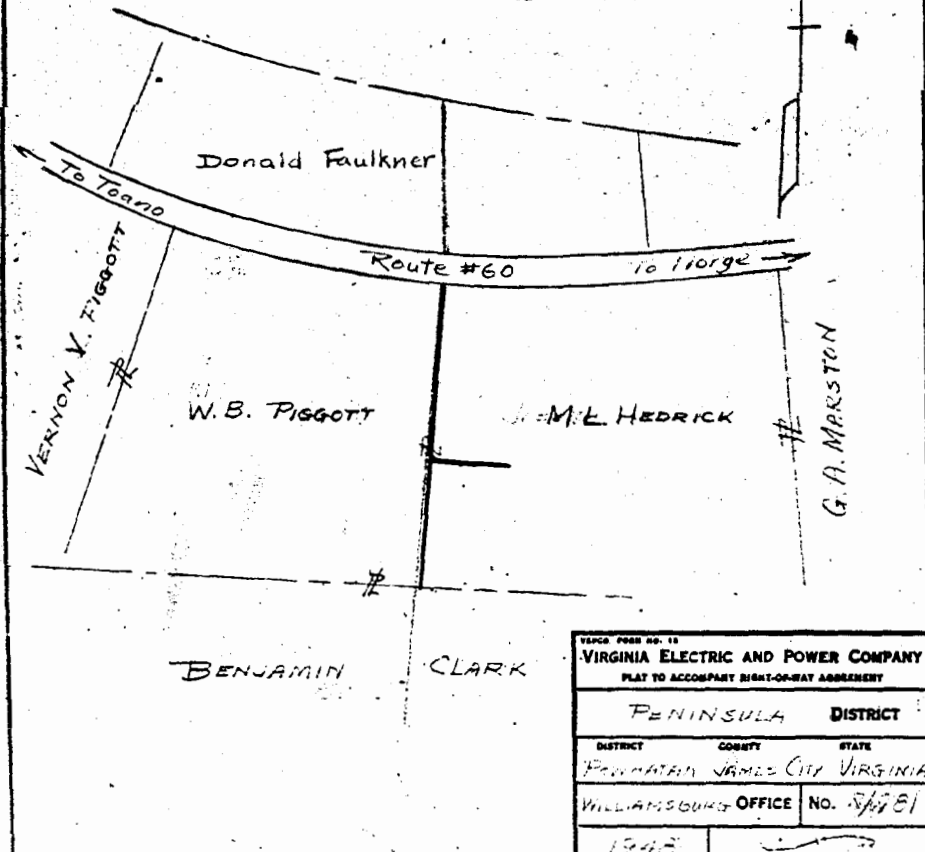
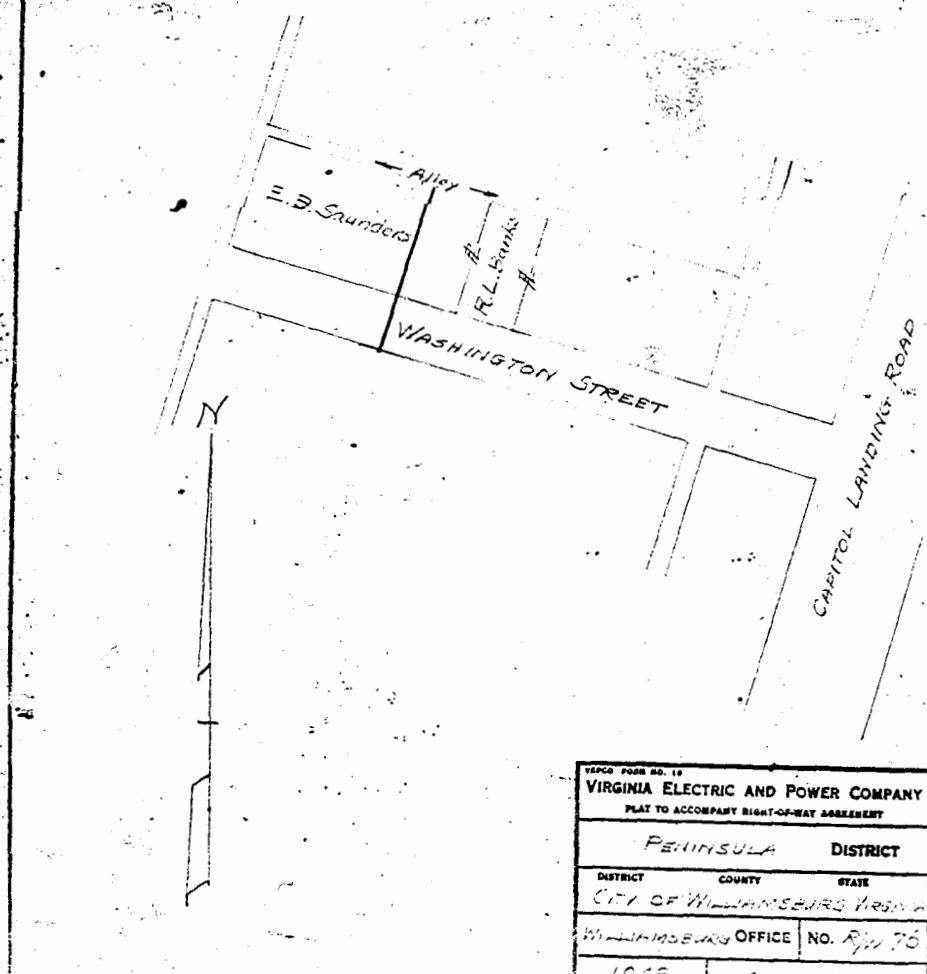


Recorded Dec 7, 1948
in
D. B. 22 41 page 369
Wm. Blanchard Clerk



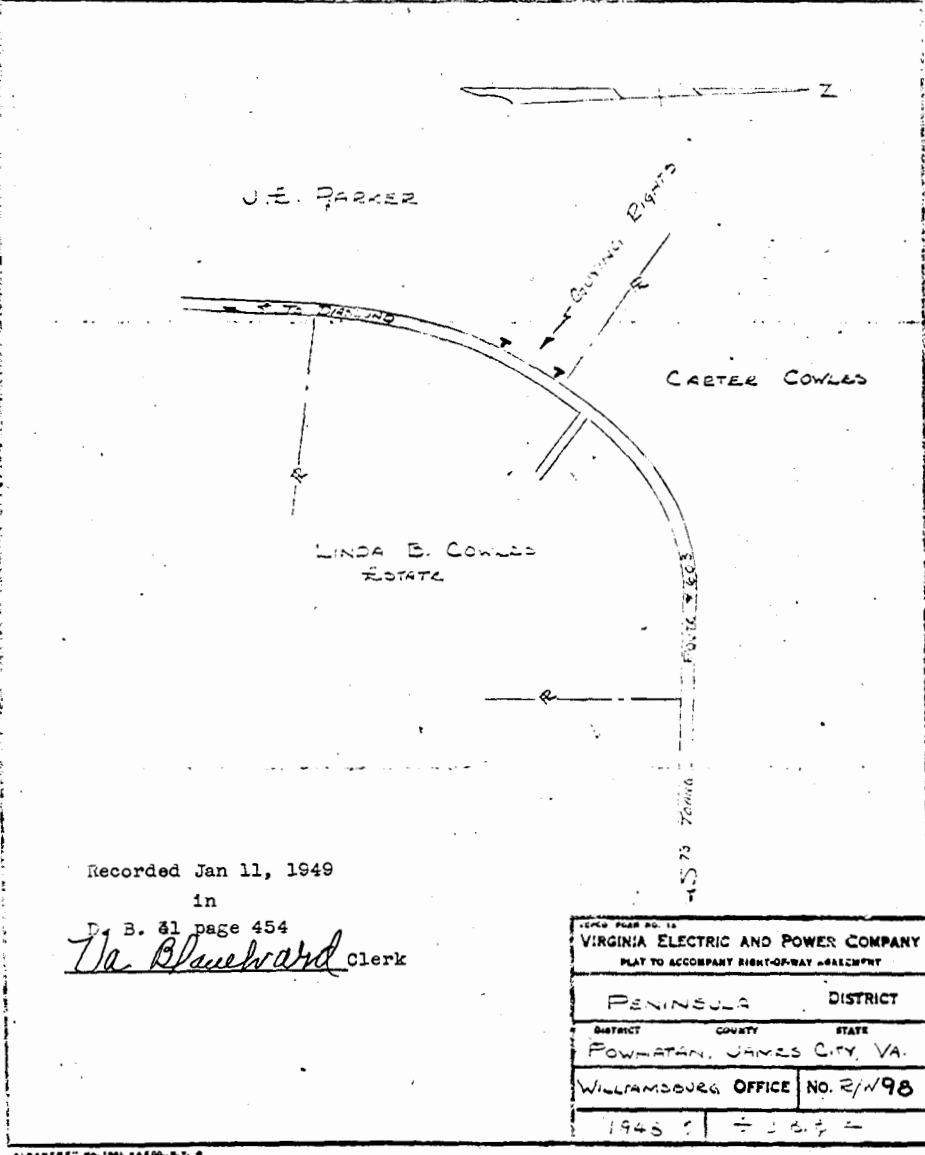
PENINSULA DISTRICT	
DISTRICT	COUNTY STATE
POWhatan	JAMES CITY VIRGINIA
WILLIAMSBURG OFFICE	NO. 545 E1
1948	

Recorded Dec 7, 1948
in
D. B. 7 page 102
Wm. Blanchard Clerk



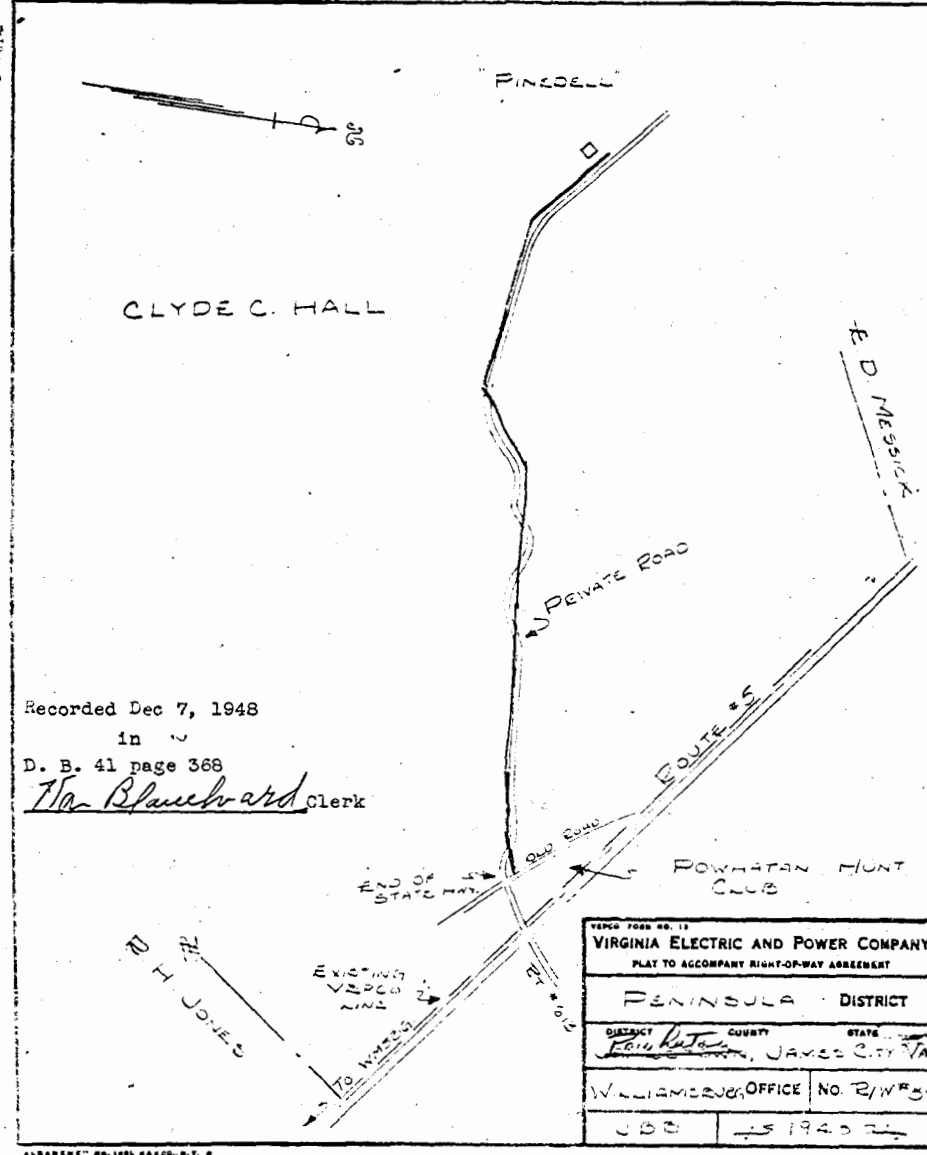
PENINSULA DISTRICT	
DISTRICT	COUNTY STATE
CITY OF WILLIAMSBURG	VIRGINIA
WILLIAMSBURG OFFICE	NO. R/W 76
1948	

Recorded Jan 11, 1949
in
D. B. 81 page 454
Wm. Blanchard Clerk



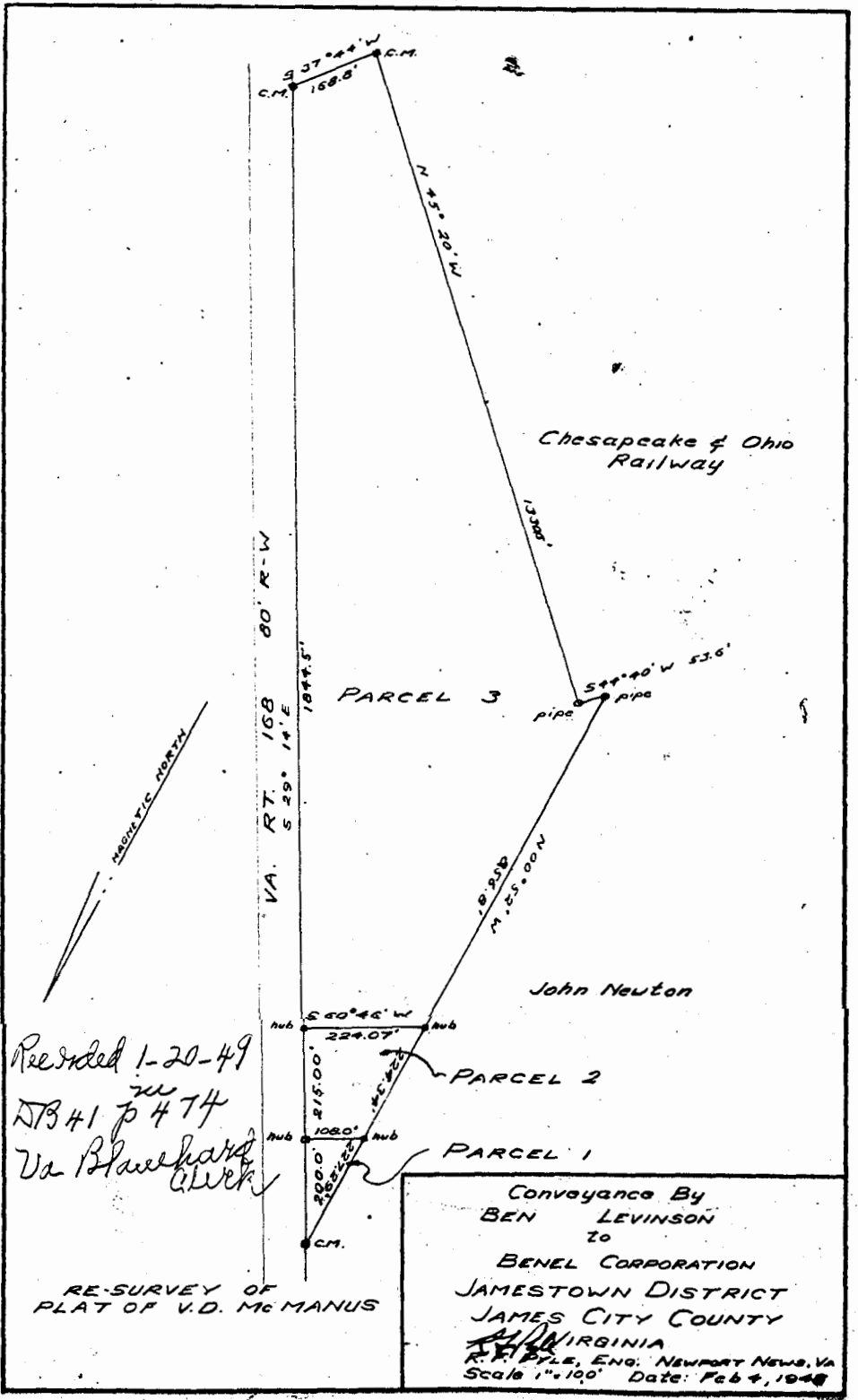
PENINSULA DISTRICT	
DISTRICT	COUNTY STATE
POWhatan	JAMES CITY VA.
WILLIAMSBURG OFFICE	NO. R/W 98
1949	

Recorded Dec 7, 1948
in
D. B. 41 page 368
Wm. Blanchard Clerk



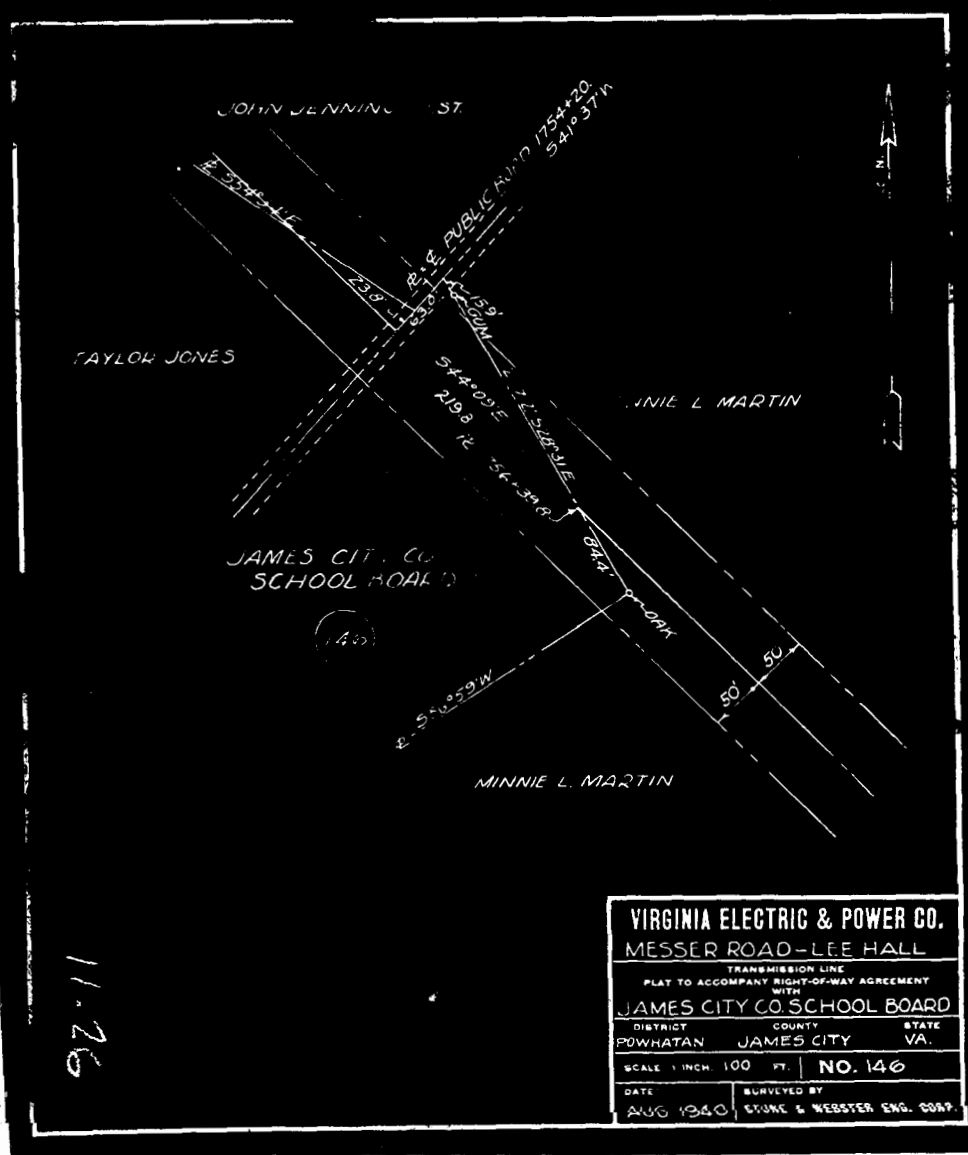
PENINSULA DISTRICT	
DISTRICT	COUNTY STATE
POWhatan	JAMES CITY VA.
WILLIAMSBURG OFFICE	NO. R/W 54
1948	

Recorded 1-20-49
DB 41 p 474
Wm. Blanchard Clerk



Conveyance By
BEN LEVINSON
To
BENEL CORPORATION
JAMESTOWN DISTRICT
JAMES CITY COUNTY
VA. VIRGINIA
R.F. Byle, Eng. Newport News, VA
Scale 1"=100' Date: Feb 4, 1948

11-26



PENINSULA DISTRICT	
DISTRICT	COUNTY STATE
POWhatan	JAMES CITY VA.
WILLIAMSBURG OFFICE	NO. 146
DATE	AUG 1940
SURVEYED BY	SCONE & WEBSTER ENG. CORP.

DRAWER NO. SHEET NO.