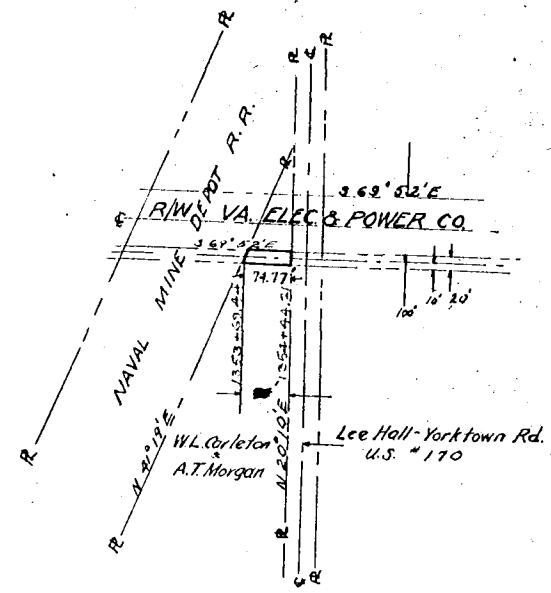
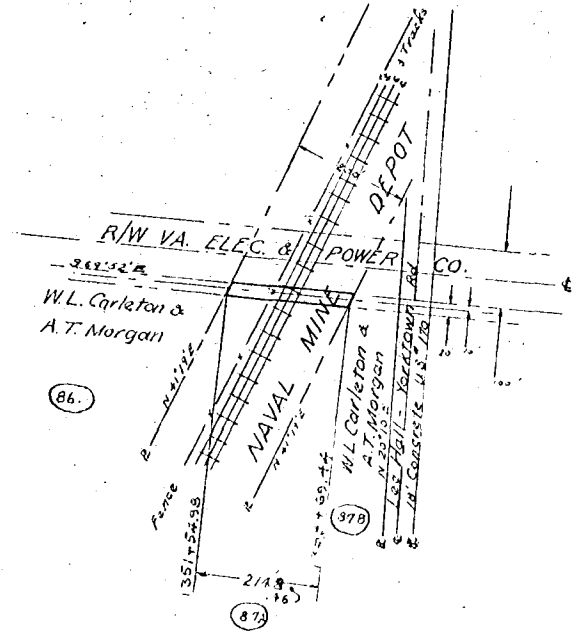


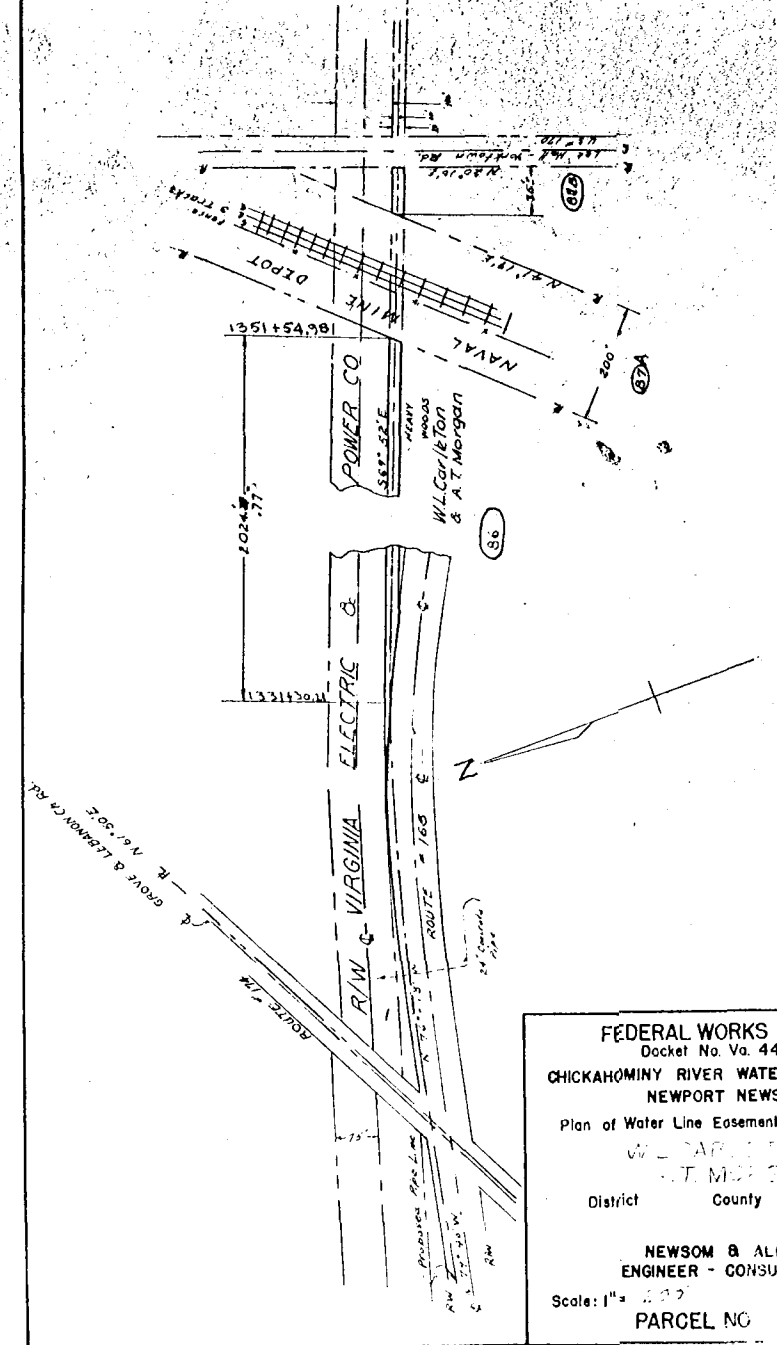
FEDERAL WORKS AGENCY  
 Docket No. Va. 44  
 CHICKAHOMINY RIVER WATER SUPPLY FOR  
 NEWPORT NEWS, VA.  
 Plan of Water Line Easement acquired from  
 STATE  
 District County State  
 Va.  
 NEWSOM & ALDRICH  
 ENGINEER - CONSULTANTS  
 Scale: 1" = 200'  
 PARCEL NO. 85



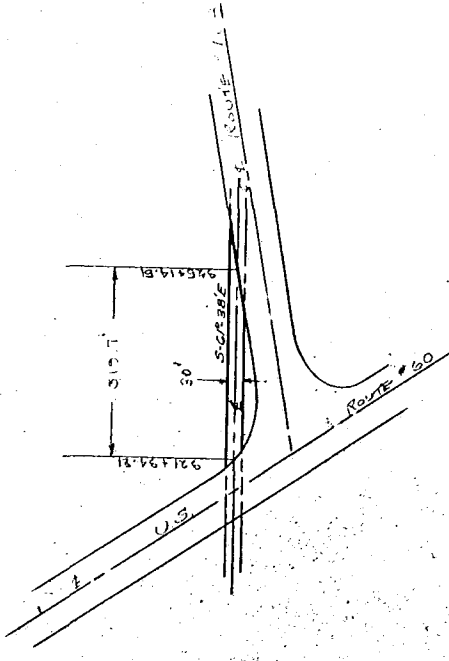
FEDERAL WORKS AGENCY  
 Docket No. Va. 44  
 CHICKAHOMINY RIVER WATER SUPPLY FOR  
 NEWPORT NEWS, VA.  
 Plan of Water Line Easement acquired from  
 W.L. Carleton &  
 A.T. Morgan  
 District County State  
 Va.  
 NEWSOM & ALDRICH  
 ENGINEER - CONSULTANTS  
 Scale: 1" = 200'  
 PARCEL NO. 86



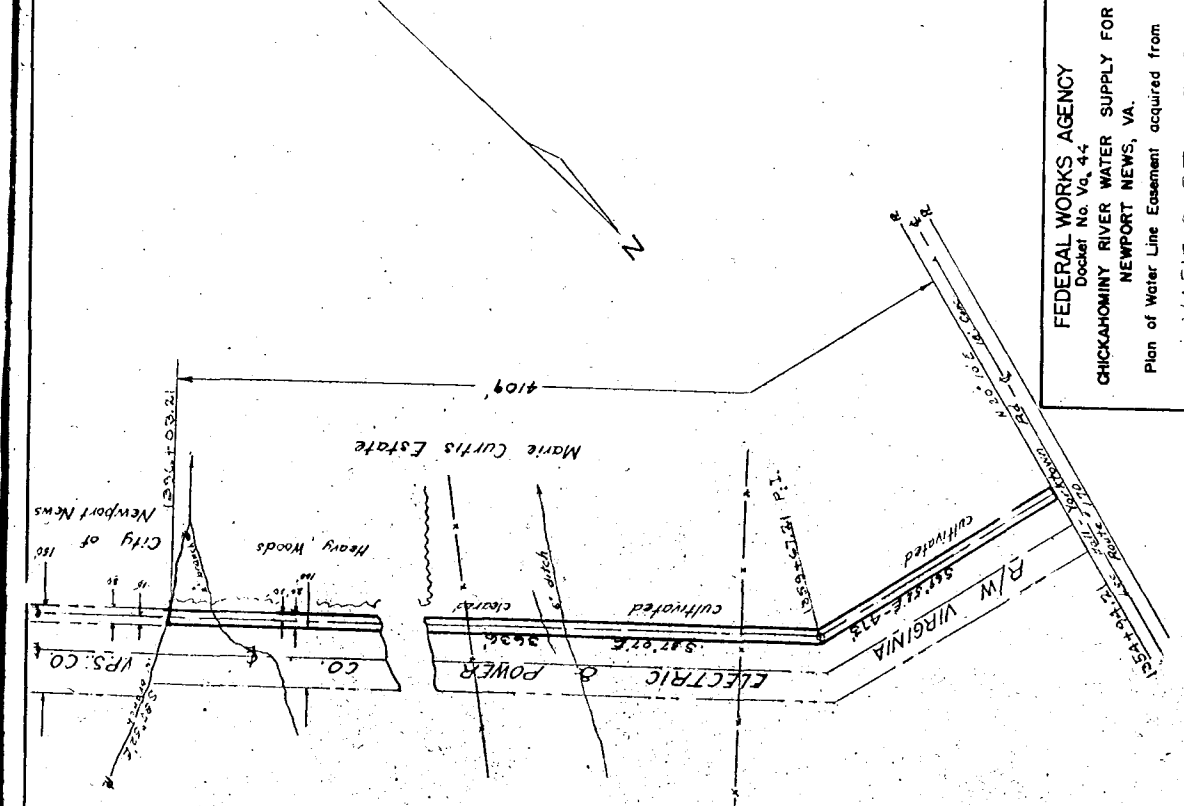
FEDERAL WORKS AGENCY  
 Docket No. Va. 44  
 CHICKAHOMINY RIVER WATER SUPPLY FOR  
 NEWPORT NEWS, VA.  
 Plan of Water Line Easement acquired from  
 District County State  
 Va.  
 NEWSOM & ALDRICH  
 ENGINEER - CONSULTANTS  
 Scale: 1" = 200'  
 PARCEL NO. 87



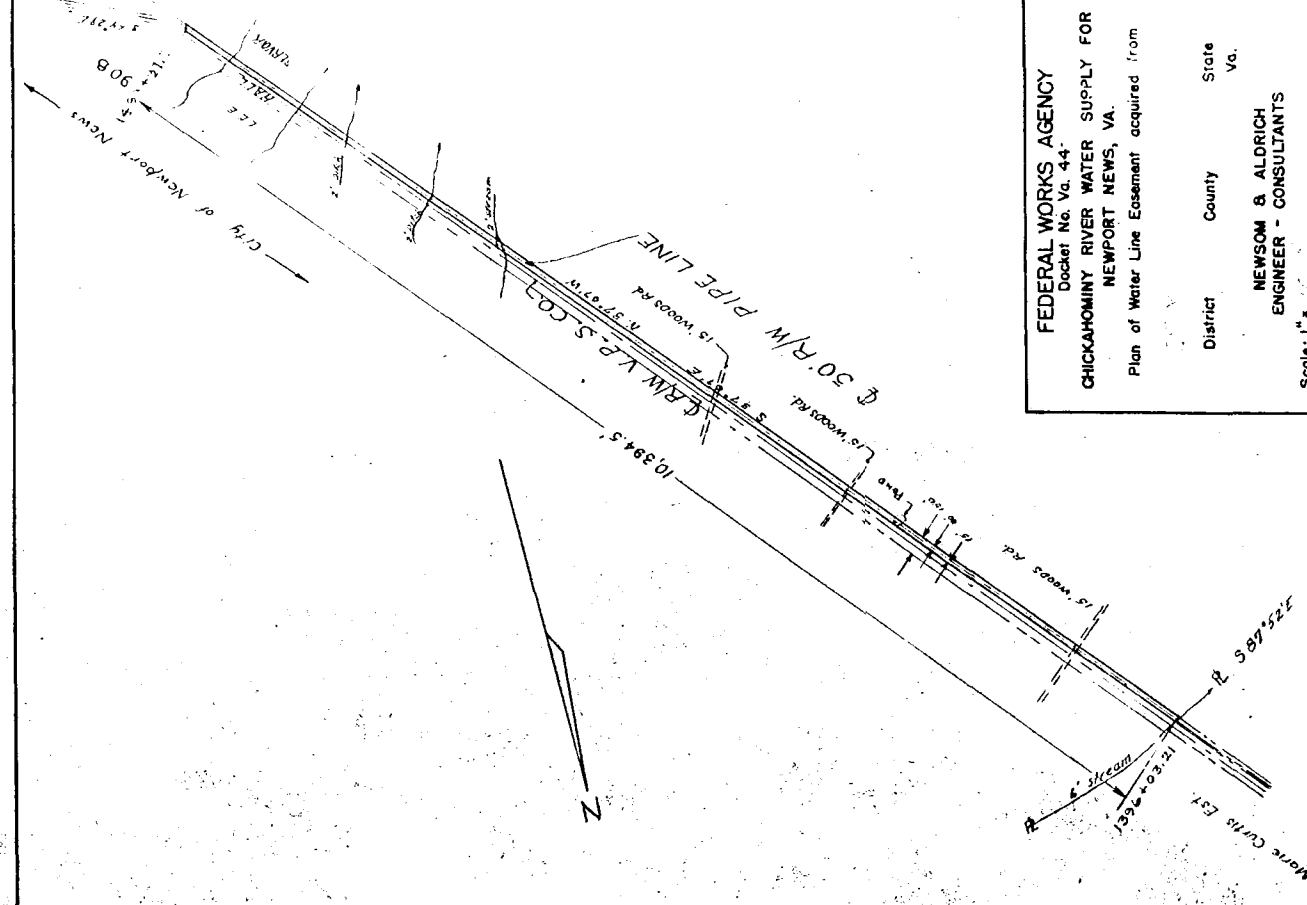
FEDERAL WORKS AGENCY  
 Docket No. Va. 44  
 CHICKAHOMINY RIVER WATER SUPPLY FOR  
 NEWPORT NEWS, VA.  
 Plan of Water Line Easement acquired from  
 W.L. Carleton &  
 A.T. Morgan  
 District County State  
 Va.  
 NEWSOM & ALDRICH  
 ENGINEER - CONSULTANTS  
 Scale: 1" = 200'  
 PARCEL NO. 88



FEDERAL WORKS AGENCY  
 Docket No. Va. 44  
 CHICKAHOMINY RIVER WATER SUPPLY FOR  
 NEWPORT NEWS, VA.  
 Plan of Water Line Easement acquired from  
 ANNIE S. HUNT  
 District County State  
 Va.  
 NEWSOM & ALDRICH  
 ENGINEER - CONSULTANTS  
 Scale: 1" = 200'  
 PARCEL NO. 89



FEDERAL WORKS AGENCY  
 Docket No. Va. 44  
 CHICKAHOMINY RIVER WATER SUPPLY FOR  
 NEWPORT NEWS, VA.  
 Plan of Water Line Easement acquired from  
 MARIE CURTIS EST.  
 District County State  
 Va.  
 NEWSOM & ALDRICH  
 ENGINEER - CONSULTANTS  
 Scale: 1" = 200'  
 PARCEL NO. 90



FEDERAL WORKS AGENCY  
 Docket No. Va. 44  
 CHICKAHOMINY RIVER WATER SUPPLY FOR  
 NEWPORT NEWS, VA.  
 Plan of Water Line Easement acquired from  
 District County State  
 Va.  
 NEWSOM & ALDRICH  
 ENGINEER - CONSULTANTS  
 Scale: 1" = 200'  
 PARCEL NO. 91