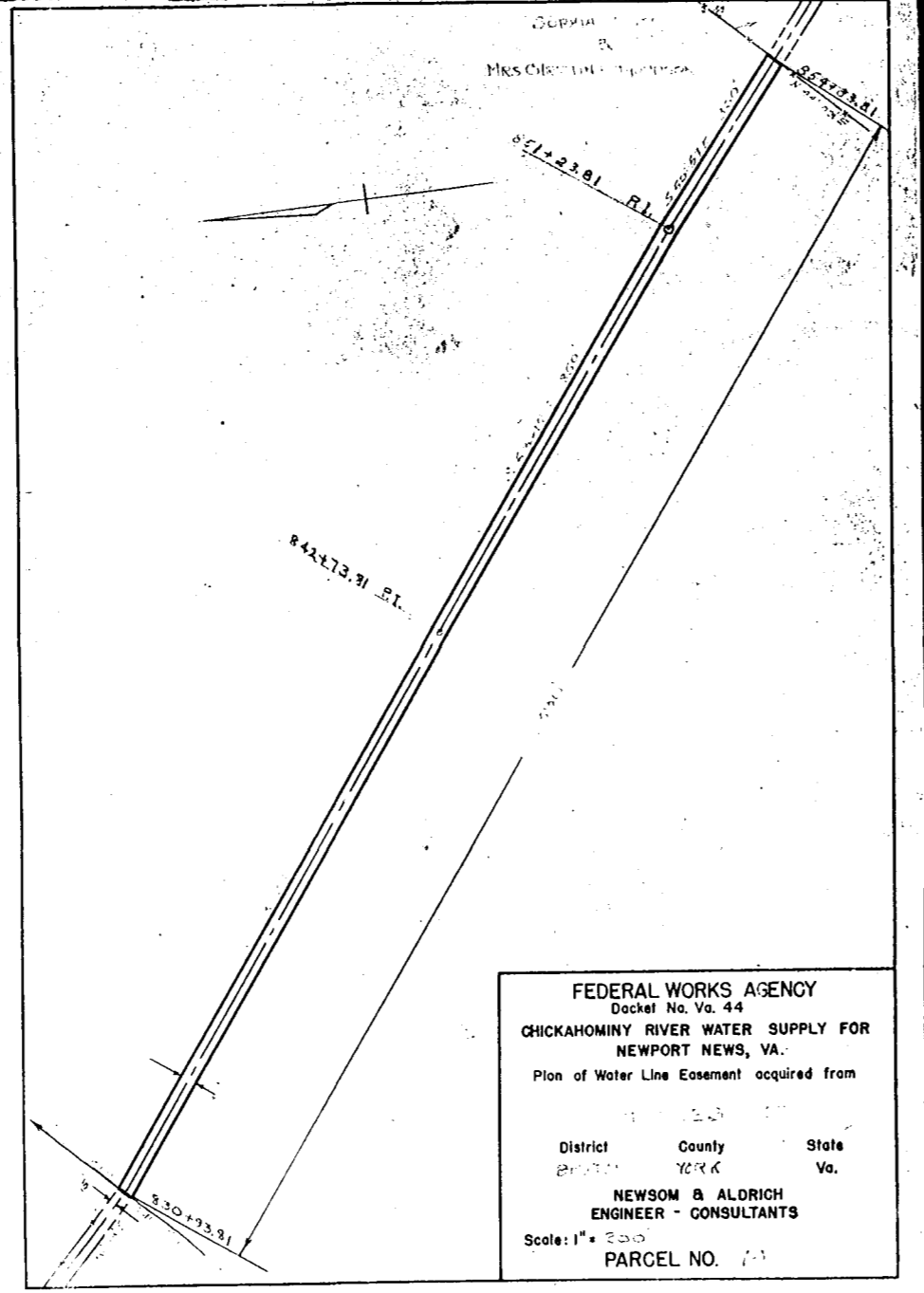
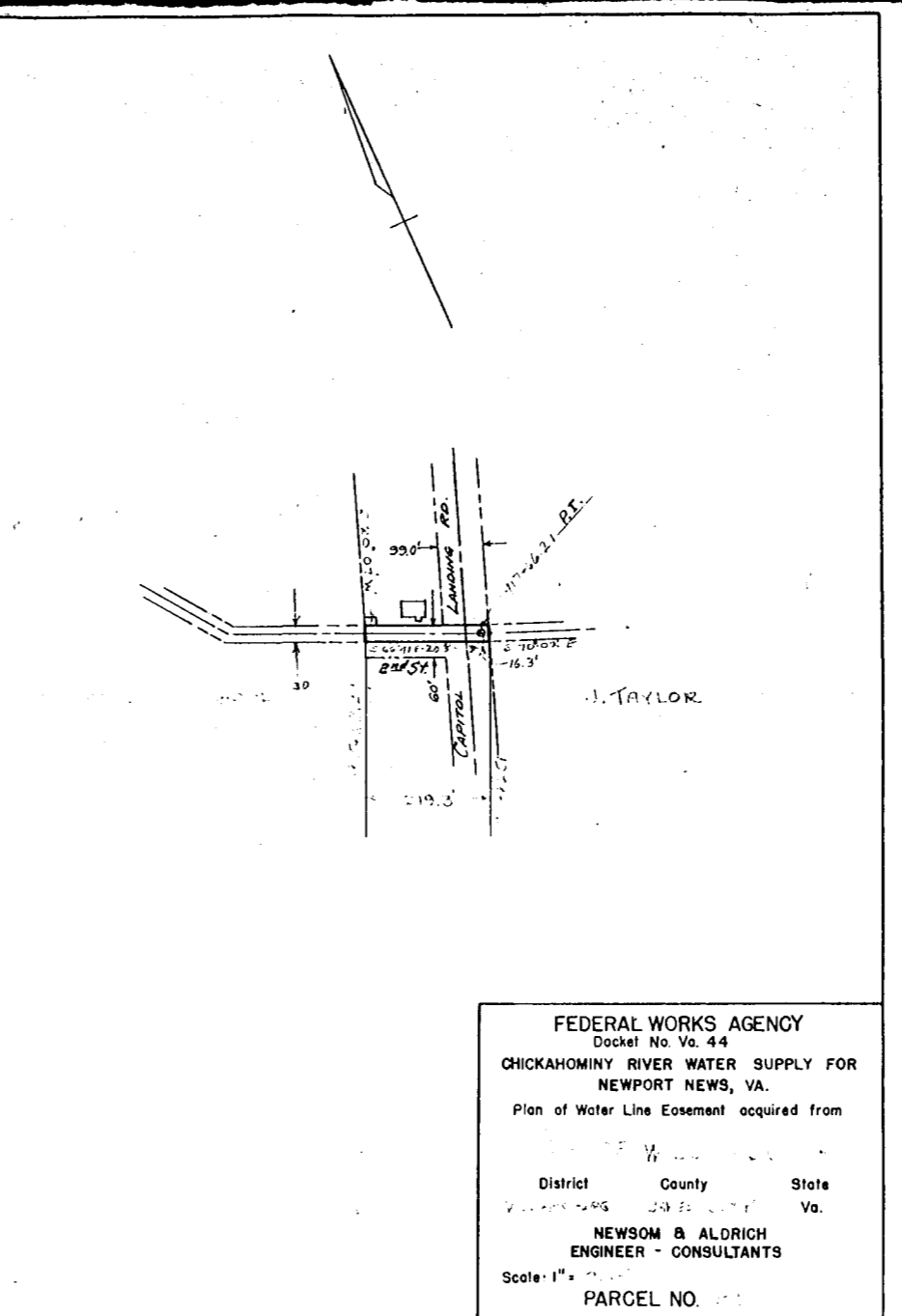


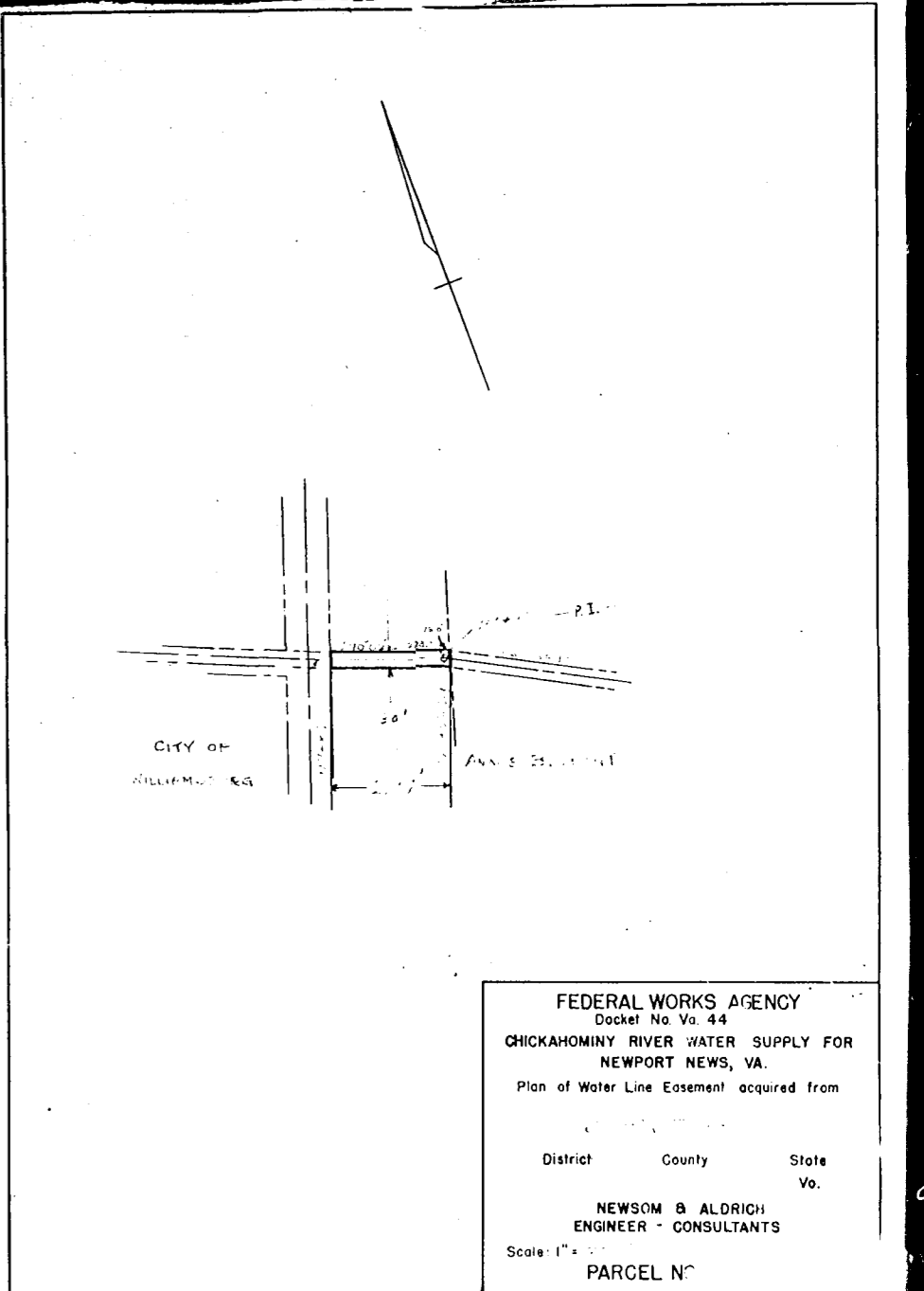
FEDERAL WORKS AGENCY  
 Docket No. Va. 44  
 CHICKAHOMINY RIVER WATER SUPPLY FOR  
 NEWPORT NEWS, VA.  
 Plan of Water Line Easement acquired from  
 DISTRICT OF COLUMBIA  
 District County State  
 DISTRICT OF COLUMBIA YORK VA.  
 NEWSOM & ALDRICH  
 ENGINEER - CONSULTANTS  
 Scale: 1" = 200'  
 PARCEL NO. 100



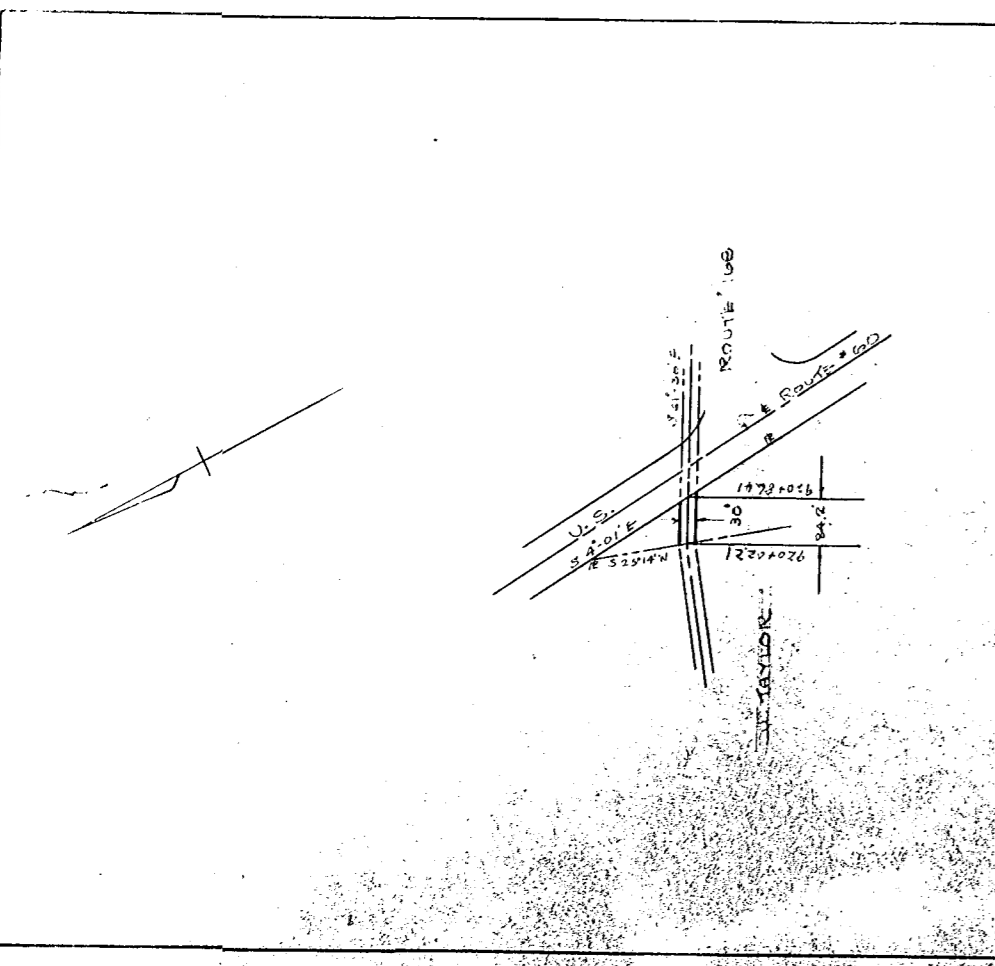
FEDERAL WORKS AGENCY  
 Docket No. Va. 44  
 CHICKAHOMINY RIVER WATER SUPPLY FOR  
 NEWPORT NEWS, VA.  
 Plan of Water Line Easement acquired from  
 DISTRICT OF COLUMBIA  
 District County State  
 DISTRICT OF COLUMBIA YORK VA.  
 NEWSOM & ALDRICH  
 ENGINEER - CONSULTANTS  
 Scale: 1" = 200'  
 PARCEL NO. 101



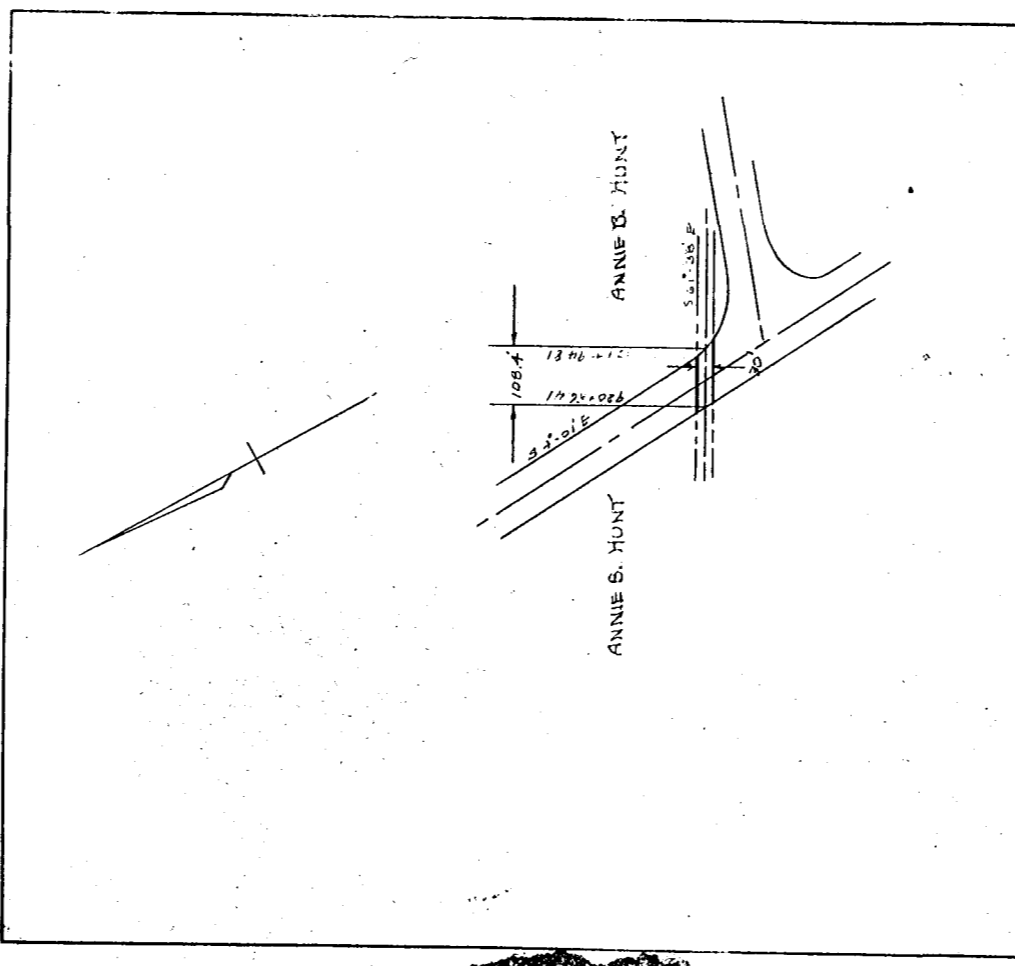
FEDERAL WORKS AGENCY  
 Docket No. Va. 44  
 CHICKAHOMINY RIVER WATER SUPPLY FOR  
 NEWPORT NEWS, VA.  
 Plan of Water Line Easement acquired from  
 DISTRICT OF COLUMBIA  
 District County State  
 DISTRICT OF COLUMBIA YORK VA.  
 NEWSOM & ALDRICH  
 ENGINEER - CONSULTANTS  
 Scale: 1" = 200'  
 PARCEL NO. 102



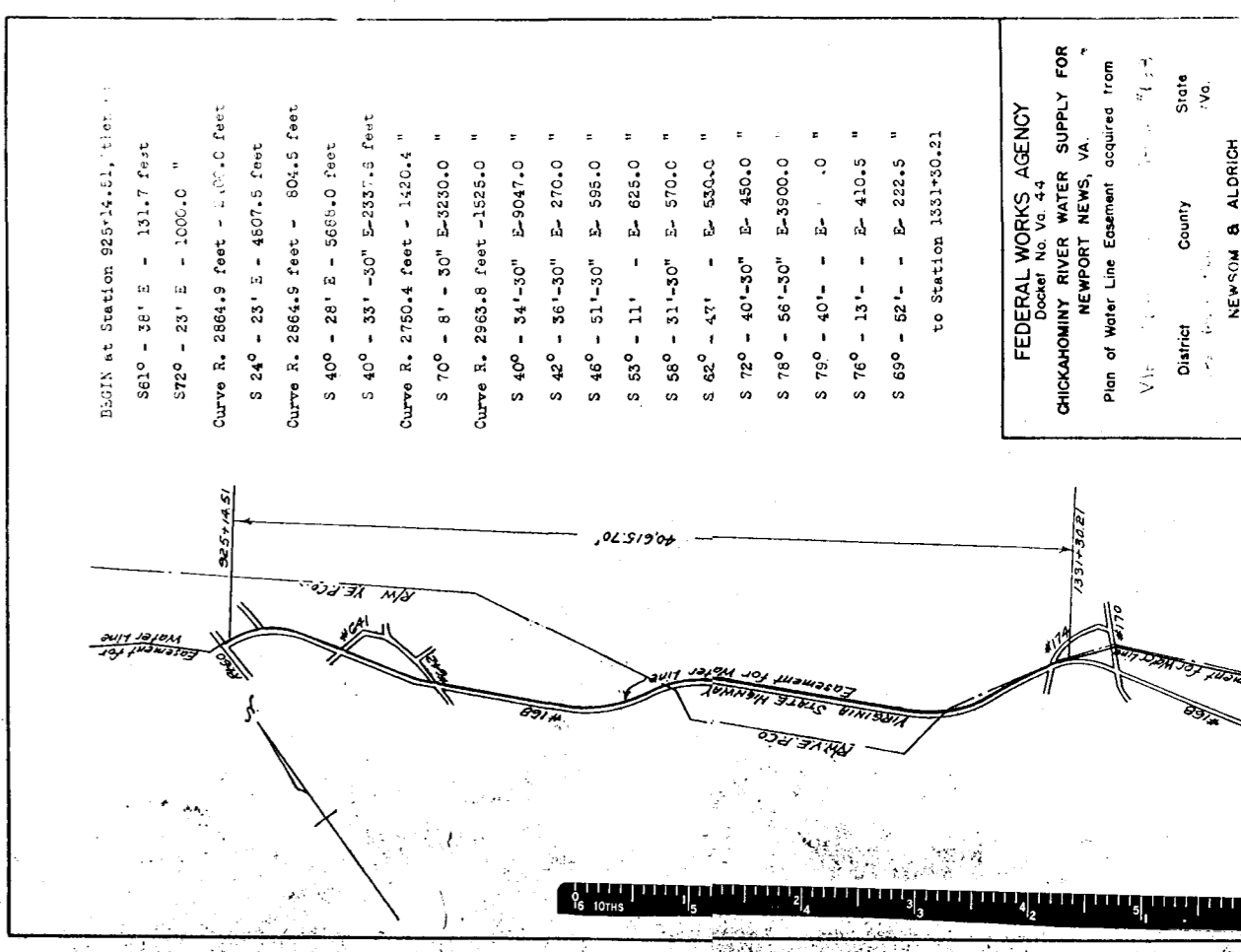
FEDERAL WORKS AGENCY  
 Docket No. Va. 44  
 CHICKAHOMINY RIVER WATER SUPPLY FOR  
 NEWPORT NEWS, VA.  
 Plan of Water Line Easement acquired from  
 DISTRICT OF COLUMBIA  
 District County State  
 DISTRICT OF COLUMBIA YORK VA.  
 NEWSOM & ALDRICH  
 ENGINEER - CONSULTANTS  
 Scale: 1" = 200'  
 PARCEL NO. 103



FEDERAL WORKS AGENCY  
 Docket No. Va. 44  
 CHICKAHOMINY RIVER WATER SUPPLY FOR  
 NEWPORT NEWS, VA.  
 Plan of Water Line Easement acquired from  
 ANNIE B. HUNT  
 District County State  
 WILLIAMSBURG JAMES CITY VA.  
 NEWSOM & ALDRICH  
 ENGINEER - CONSULTANTS  
 Scale: 1" = 200'  
 PARCEL NO. 104



FEDERAL WORKS AGENCY  
 Docket No. Va. 44  
 CHICKAHOMINY RIVER WATER SUPPLY FOR  
 NEWPORT NEWS, VA.  
 Plan of Water Line Easement acquired from  
 U.S. ROUTE  
 District County State  
 DISTRICT OF COLUMBIA YORK VA.  
 NEWSOM & ALDRICH  
 ENGINEER - CONSULTANTS  
 Scale: 1" = 200'  
 PARCEL NO. 105



BS31N at Station 925+4.61, Tiers 1  
 S 61° - 36' E - 131.7 feet  
 S 72° - 23' E - 1000.0 "  
 Curve R. 2864.9 feet - 100° C feet  
 S 24° - 23' E - 4807.5 feet  
 Curve R. 2864.5 feet - 80° C feet  
 S 40° - 28' E - 5664.0 feet  
 S 40° - 33' - 30" E - 2337.8 feet  
 Curve R. 2750.4 feet - 1420.4 "  
 S 70° - 8' - 30" E - 3230.0 "  
 Curve R. 2968.8 feet - 1525.0 "  
 S 40° - 34' - 30" E - 9047.0 "  
 S 42° - 56' - 30" E - 270.0 "  
 S 46° - 51' - 30" E - 595.0 "  
 S 55° - 11' - E - 625.0 "  
 S 58° - 31' - 30" E - 570.0 "  
 S 62° - 47' - E - 530.0 "  
 S 72° - 40' - 30" E - 450.0 "  
 S 78° - 56' - 30" E - 3500.0 "  
 S 78° - 40' - E - .0 "  
 S 76° - 13' - E - 410.5 "  
 S 69° - 52' - E - 222.5 "  
 to Station 1331+30.21

FEDERAL WORKS AGENCY  
 Docket No. Va. 44  
 CHICKAHOMINY RIVER WATER SUPPLY FOR  
 NEWPORT NEWS, VA.  
 Plan of Water Line Easement acquired from  
 DISTRICT OF COLUMBIA  
 District County State  
 DISTRICT OF COLUMBIA YORK VA.  
 NEWSOM & ALDRICH  
 ENGINEER - CONSULTANTS  
 Scale: 1" = 200'