

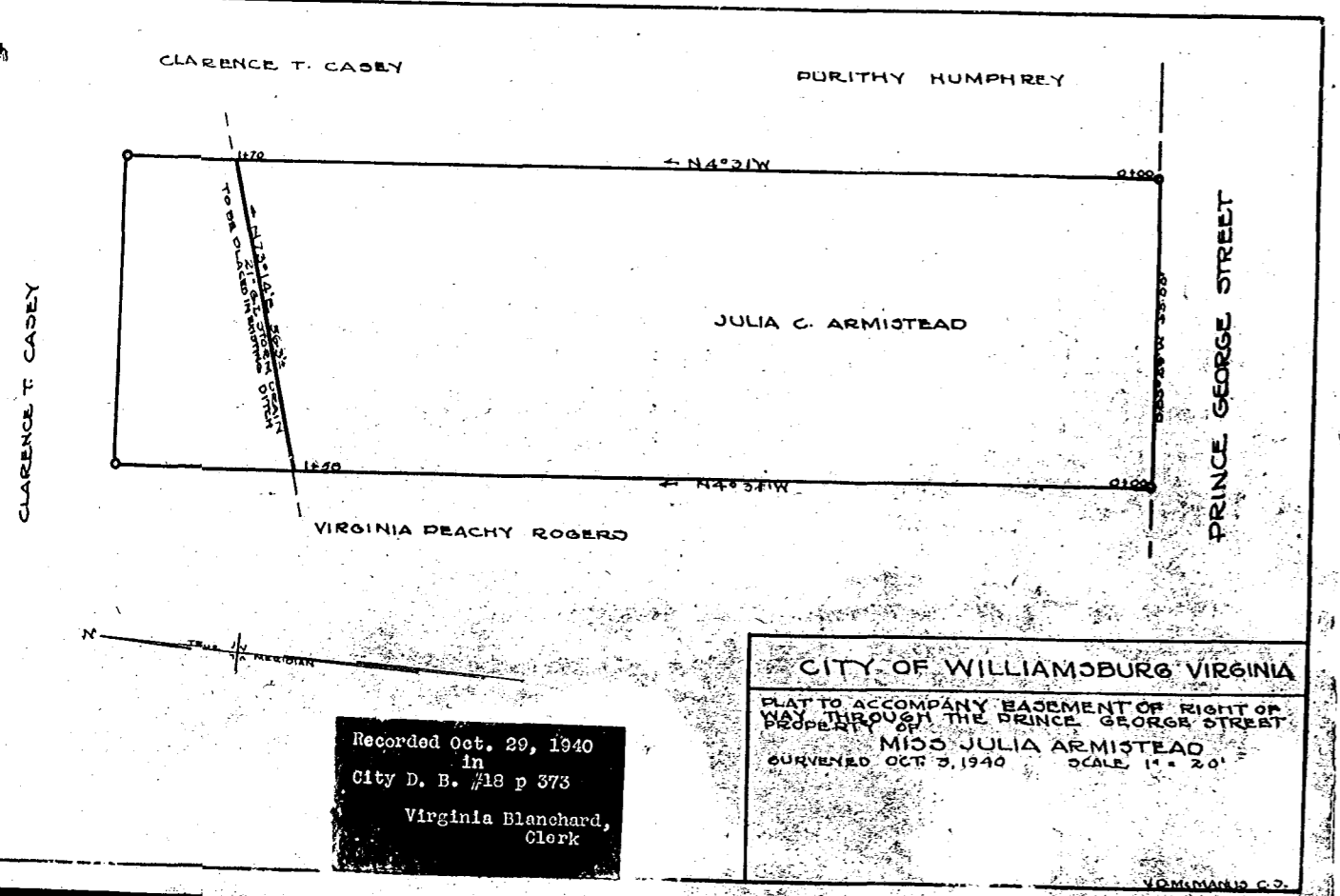
COURSE	BEARING	DIST.
1	N35-20W	326
2	N34-30W	212
3	N11-30W	127
4	N8-35E	224
5	N14-00W	62
6	N34-30W	257
7	N6-00W	...
8	N21-30E	355
9	N39-00E	220
10	S27-15E	311
11	N47-15E	293
12	N27-15W	314
13	N32-00E	259
14	N74-45E	193
15	N49-30E	235
16	N67-00E	38
17	S5-30E	162
18	N62-30E	190
19	N5-30W	142
20	N38-00E	260
21	N64-15E	171
22	N82-30E	143
23	N33-45E	145
24	S38-00E	231
25	S36-00E	446
26	N31-00E	255
27	S33-00E	223
28	S34-00E	279
29	N36-15E	60
30	N6-15E	426
31	N67-00E	296
32	N3-00E	2637
33	S47-30E	210
34	S47-15E	178
35	S31-30E	371
36	S32-00E	473
37	S30E	123
38	N15E	79
39	S35E	149
40	S30W	274
41	S55-00E	211
42	S30E	257
43	S30E	205
44	S47-45W	325
45	S35E	226
46	S83-30E	225
47	S80-00E	152
48	S71-45E	138
49	S2-15E	361
50

AREA 256.5 ACRES

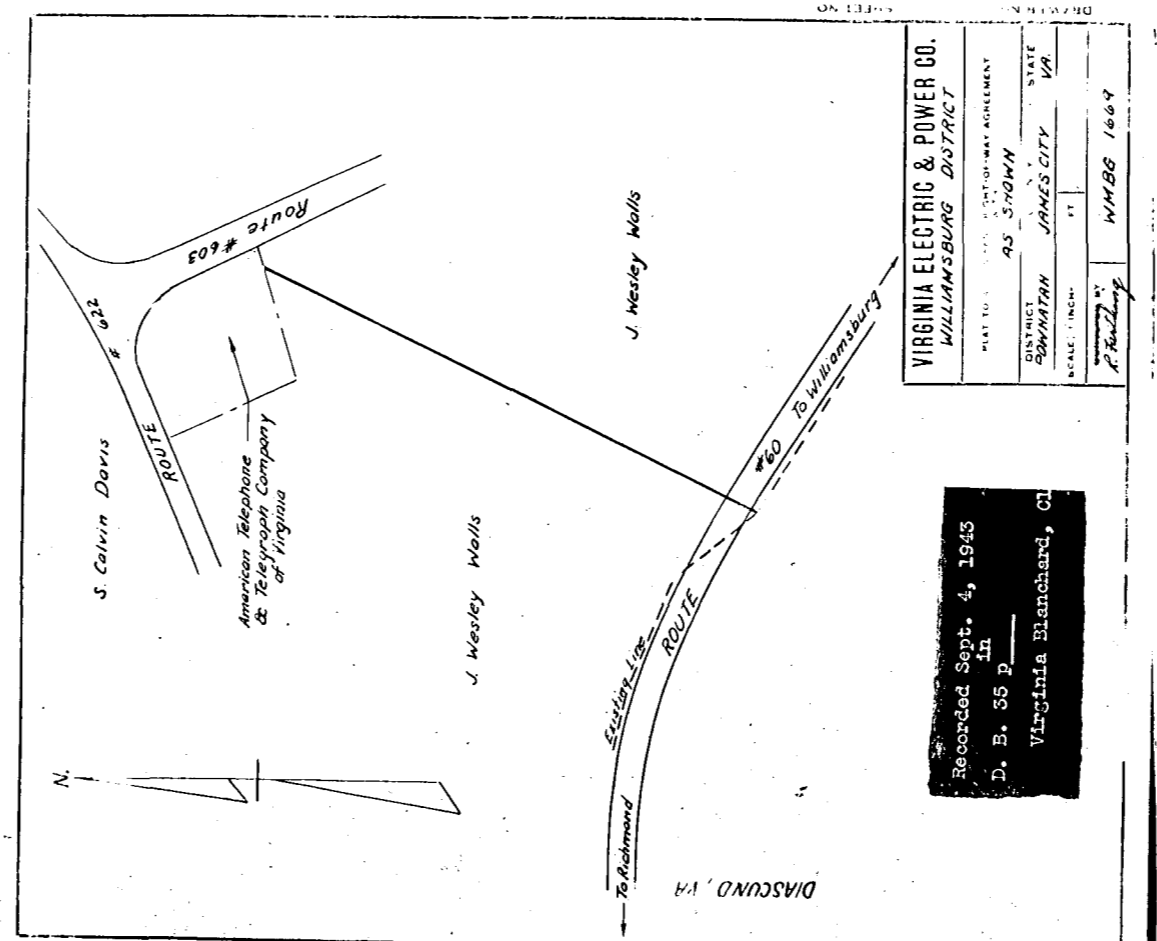
NOTE
FOR FURTHER DETAILS ON
RAILROAD RIGHT OF WAY SEE
C & D RY PLAT.

Recorded Oct. 7, 1942
In
D. B. No. 34 page 424
Wm. Blauvelt Clerk

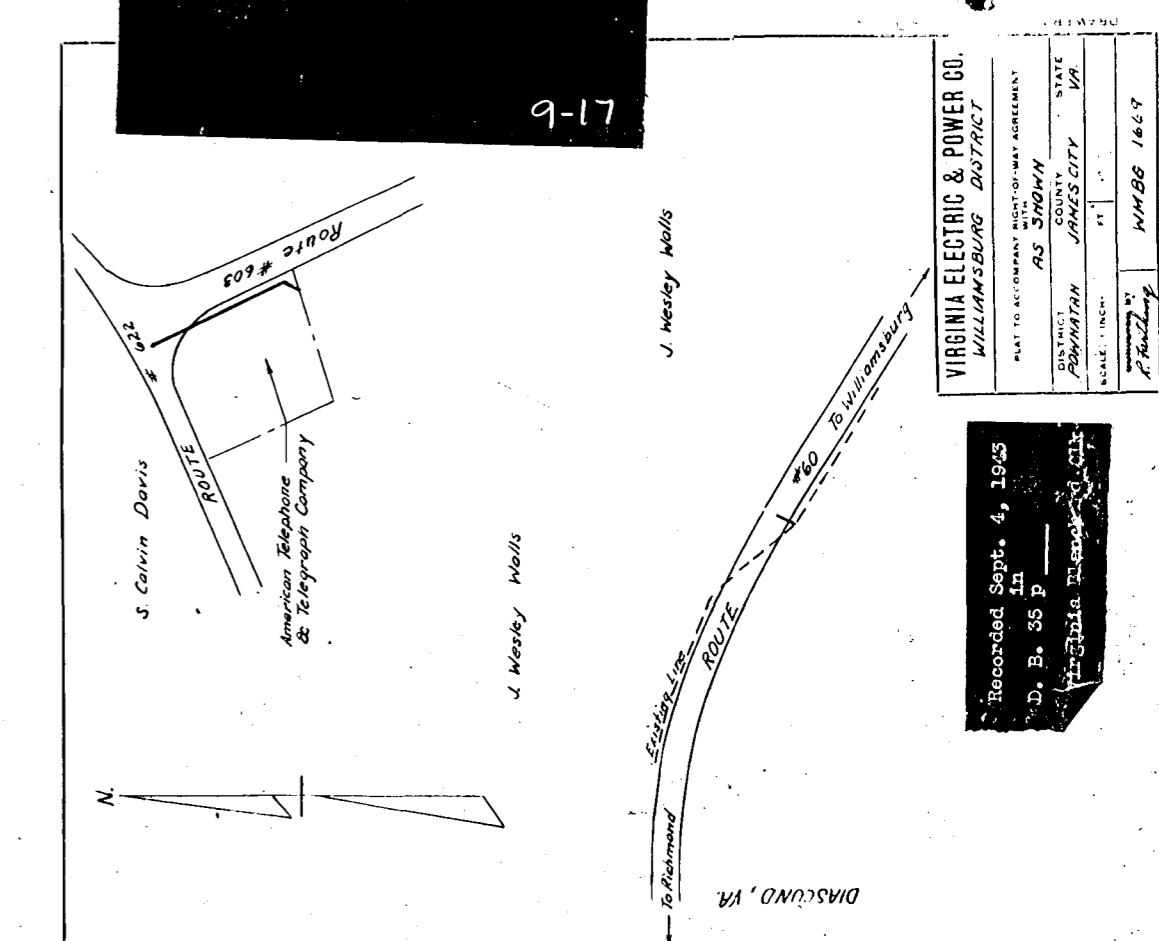
PLAT OF
A PORTION OF "LOMBARDY"
PROPERTY OF BRANCH MARTIN
POWHATAN DIST, JAMES CITY CO, VA.
SCALE 1"=300'
DEC. 19, 1931.



Recorded Oct. 20, 1940
In
City D. B. #18 p 373
Virginia Blanchard,
Clerk



Recorded Sept. 4, 1943
In
D. B. 35 p
Virginia Blanchard, Clerk



Recorded Sept. 4, 1943
In
D. B. 35 p
Virginia Blanchard, Clerk