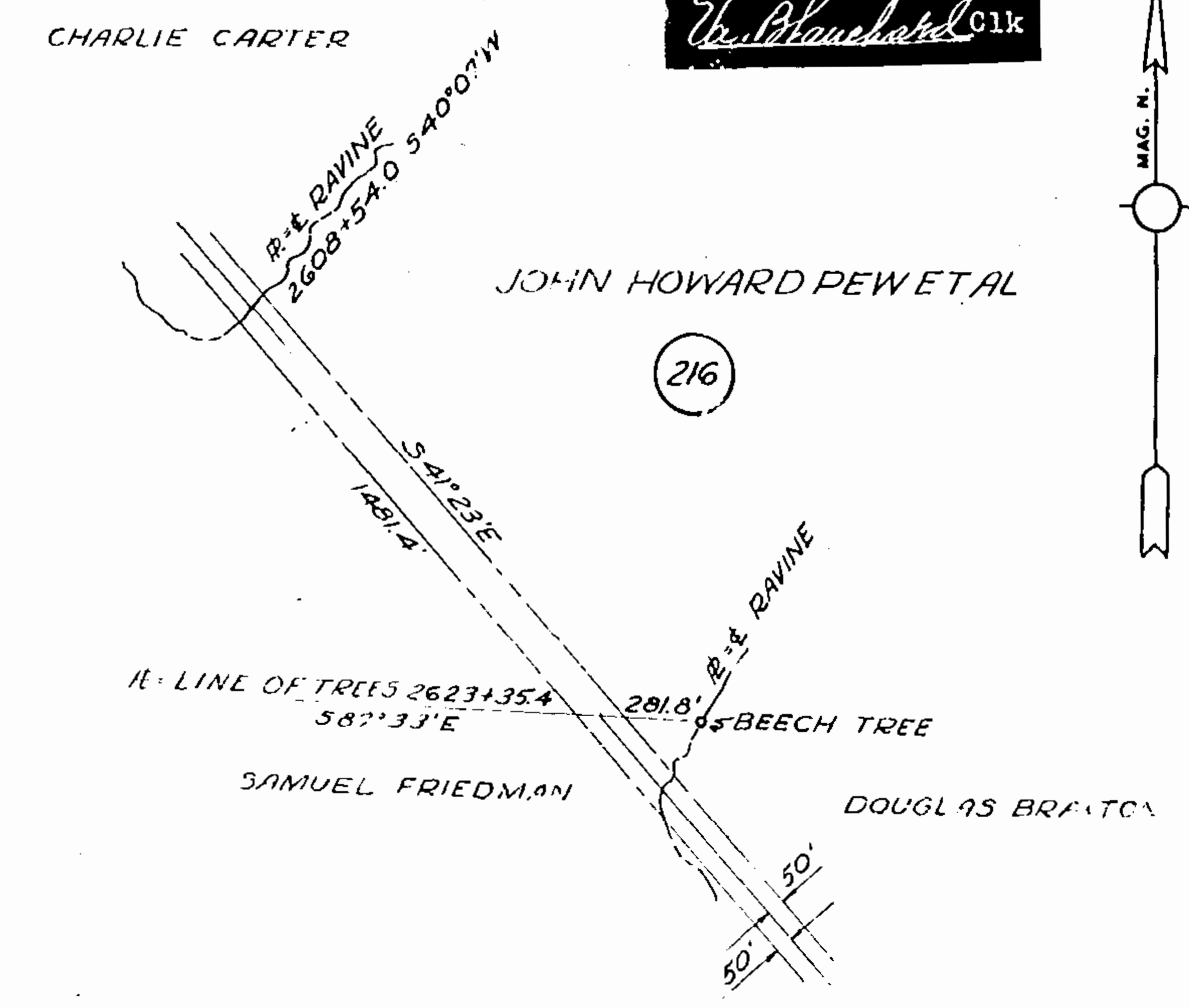
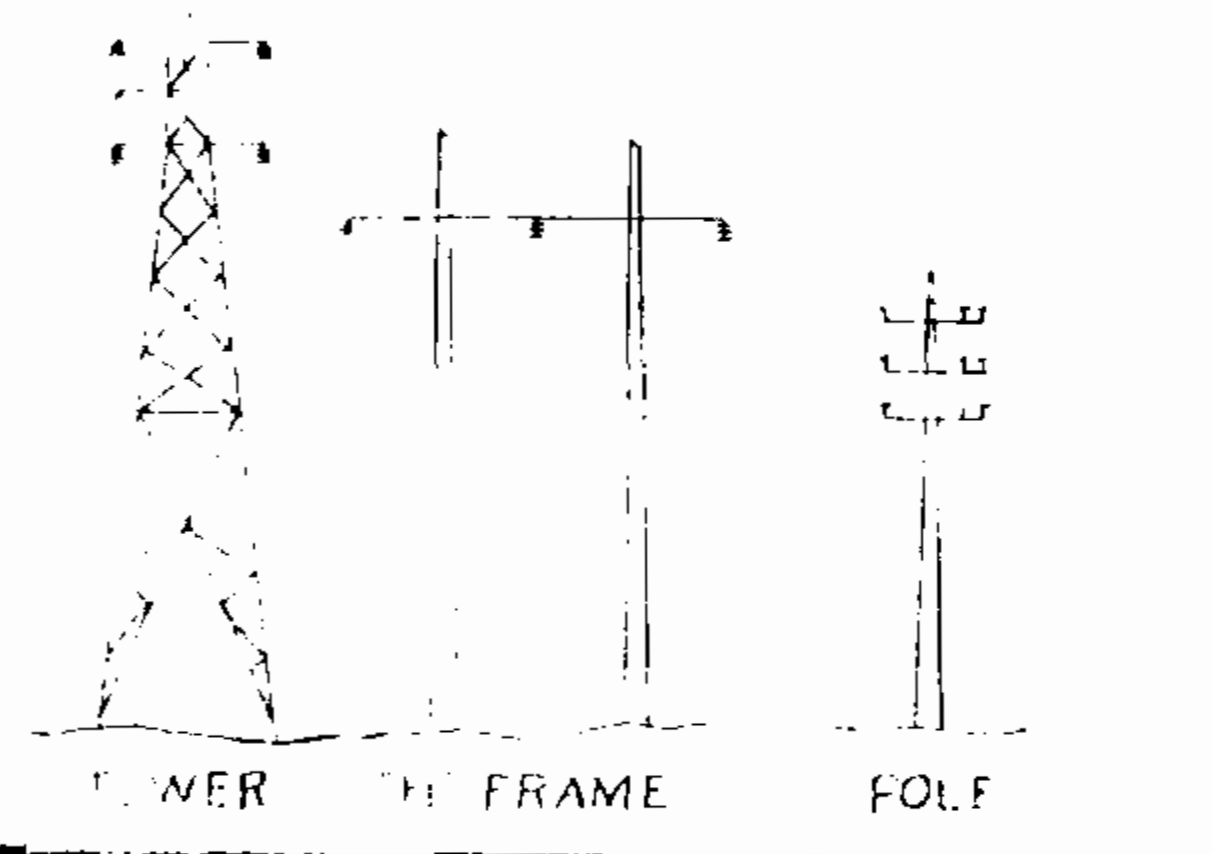


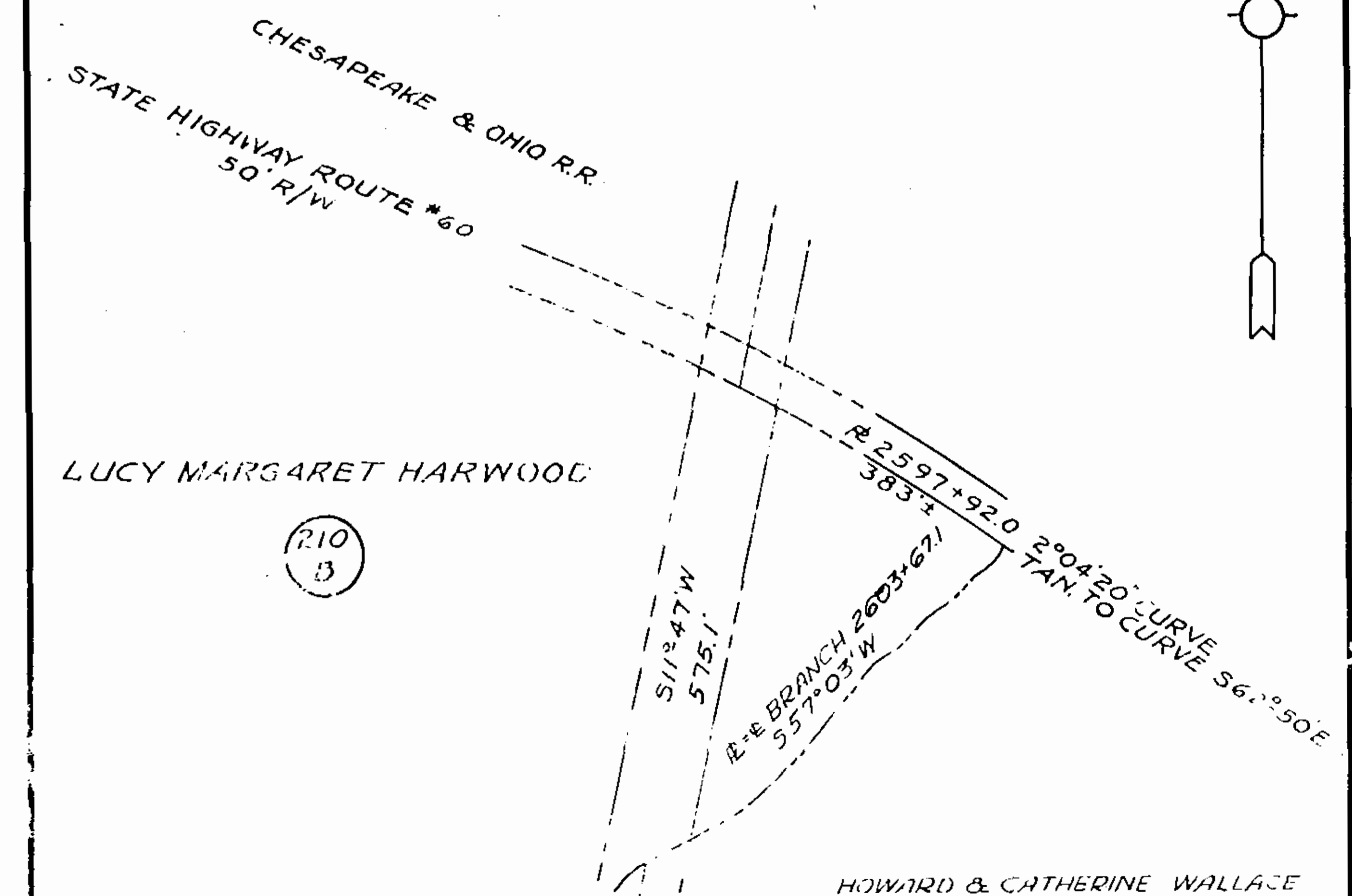
Recorded 3-29-41
in
D. B. 33 p. 228
W. Blanchard Clerk



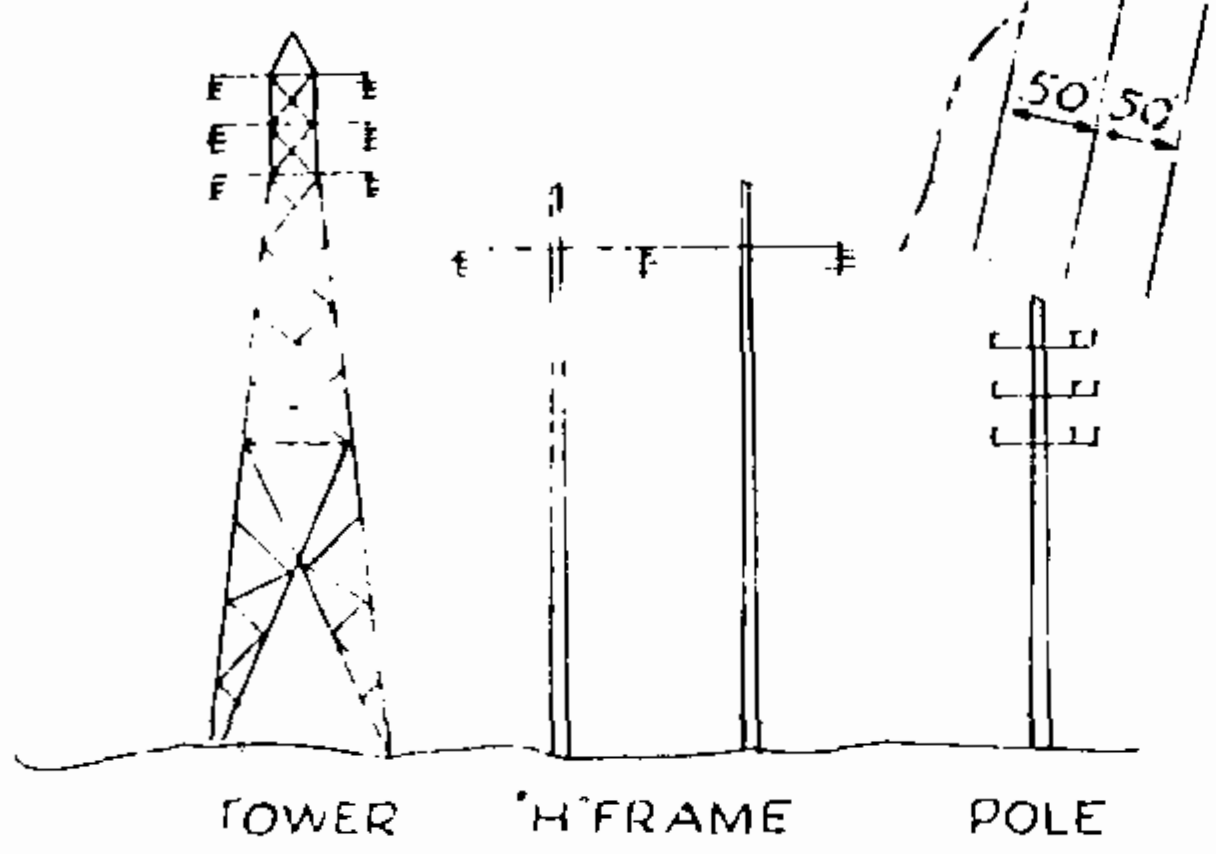
VIRGINIA ELECTRIC & POWER CO.
MESSER ROAD-LEE HALL
TRANSMISSION LINE
PLAT TO ACCOMPANY RIGHT-OF-WAY AGREEMENT
WITH
JOHN HOWARD PEW ET AL
DISTRICT COUNTY STATE
JAMESTOWN JAMES CITY VA.
SCALE: 1 INCH = 500 FT. NO. 216
DATE: NOV. 1940 SURVEYED BY STONE & WEBSTER ENG. CORP.



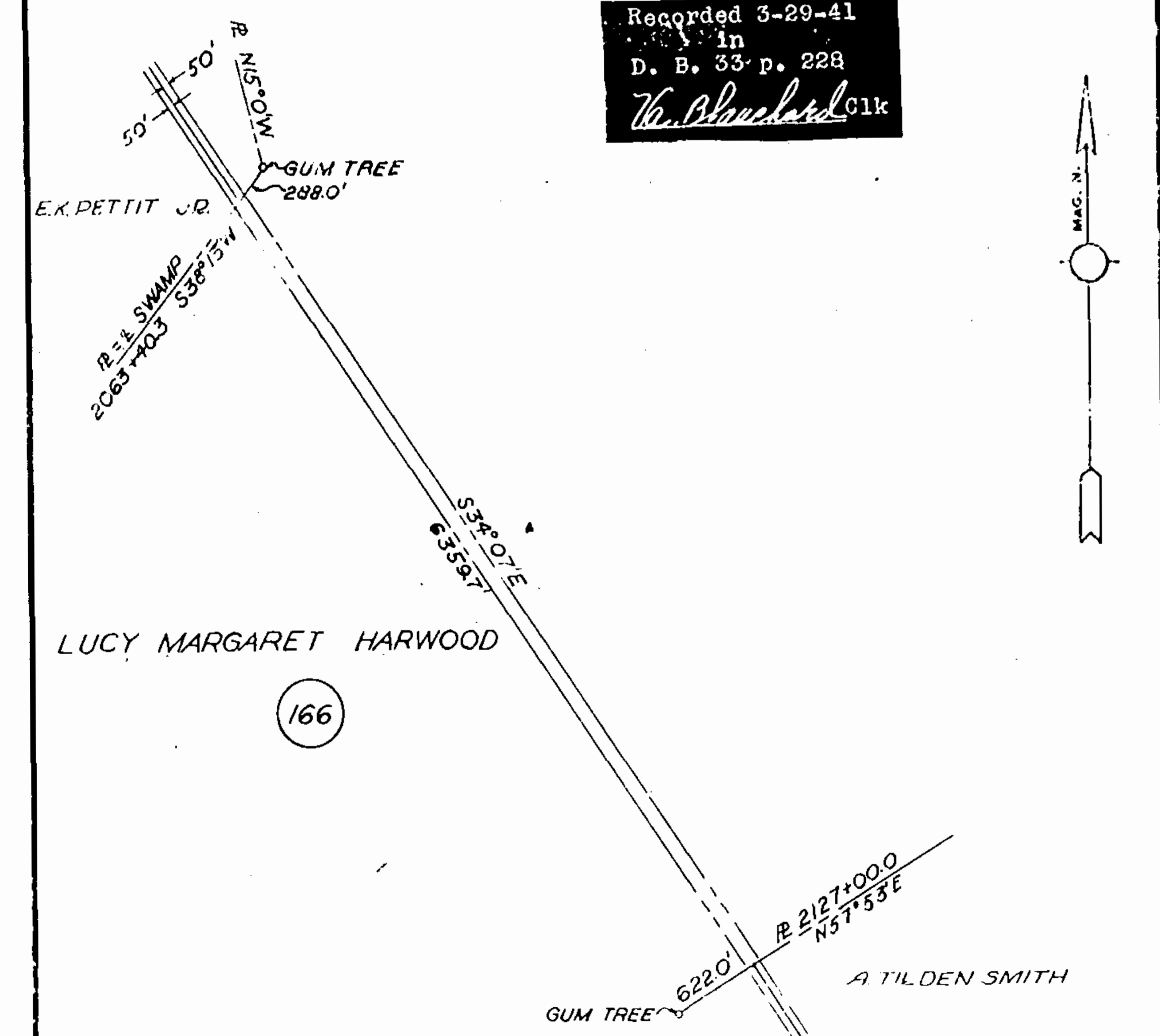
Recorded 3-29-41
in
D. B. 33 p. 228
W. Blanchard Clerk



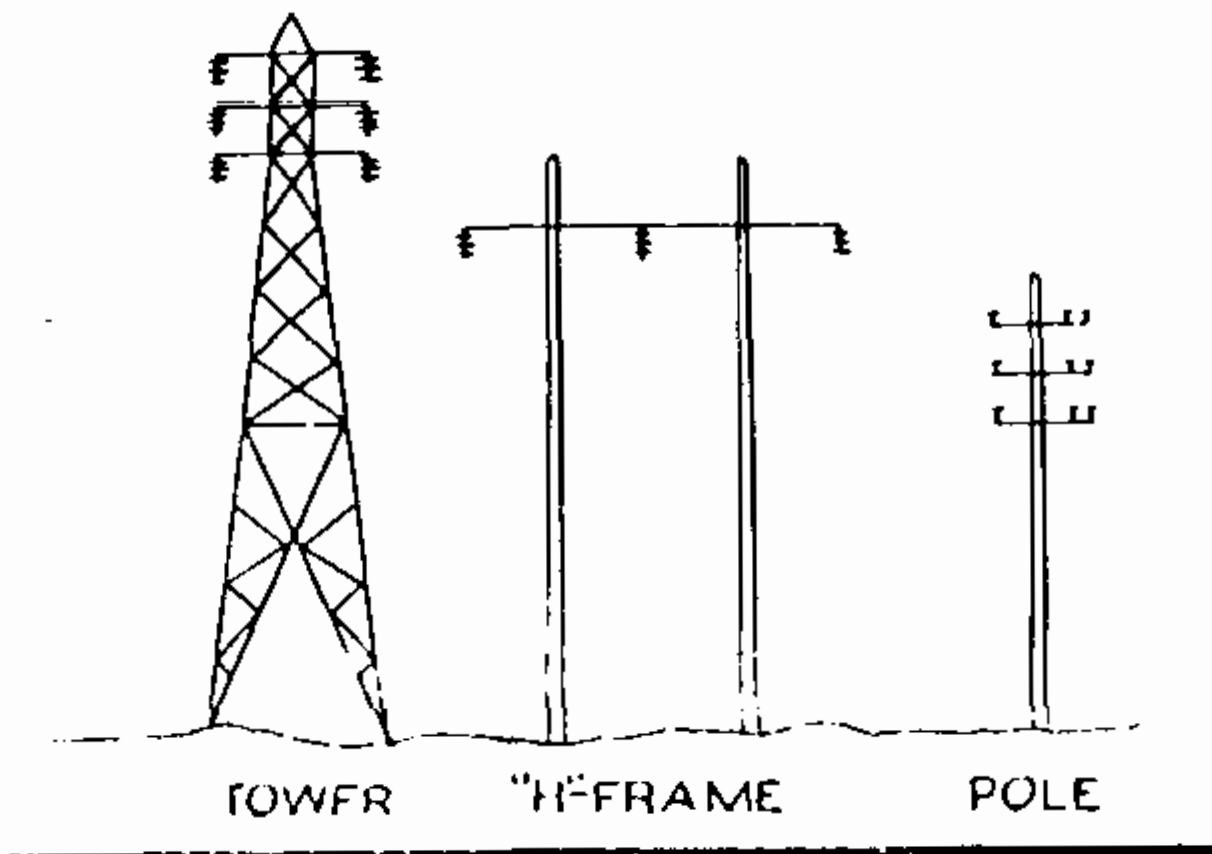
VIRGINIA ELECTRIC & POWER CO.
MESSER ROAD-LEE HALL
TRANSMISSION LINE
PLAT TO ACCOMPANY RIGHT-OF-WAY AGREEMENT
WITH
LUCY MARGARET HARWOOD
DISTRICT COUNTY STATE
JAMESTOWN JAMES CITY VA.
SCALE: 1 INCH = 200 FT. NO. 210-B
DATE: NOV. 1940 SURVEYED BY STONE & WEBSTER ENG. CORP.



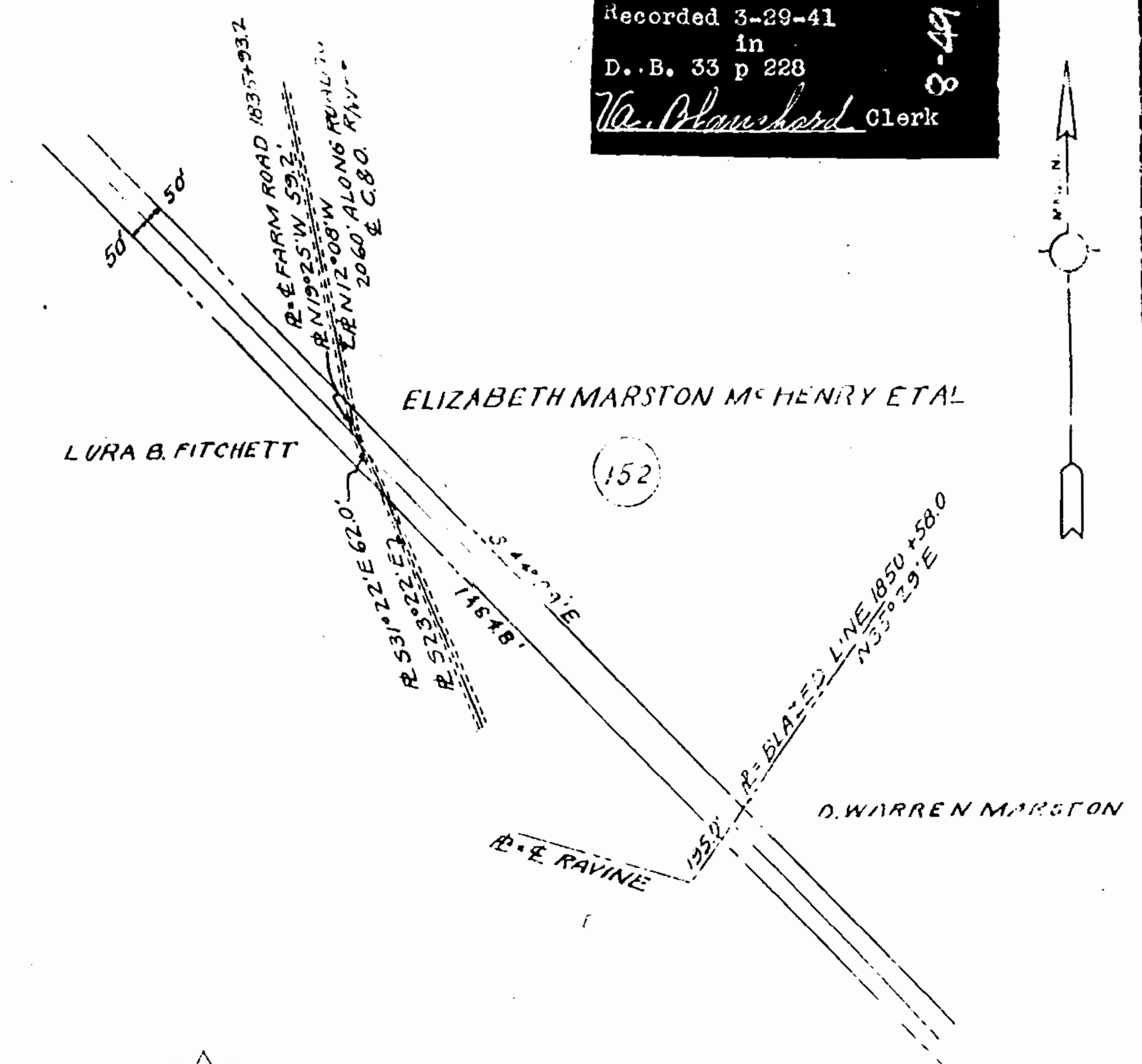
Recorded 3-29-41
in
D. B. 33 p. 228
W. Blanchard Clerk



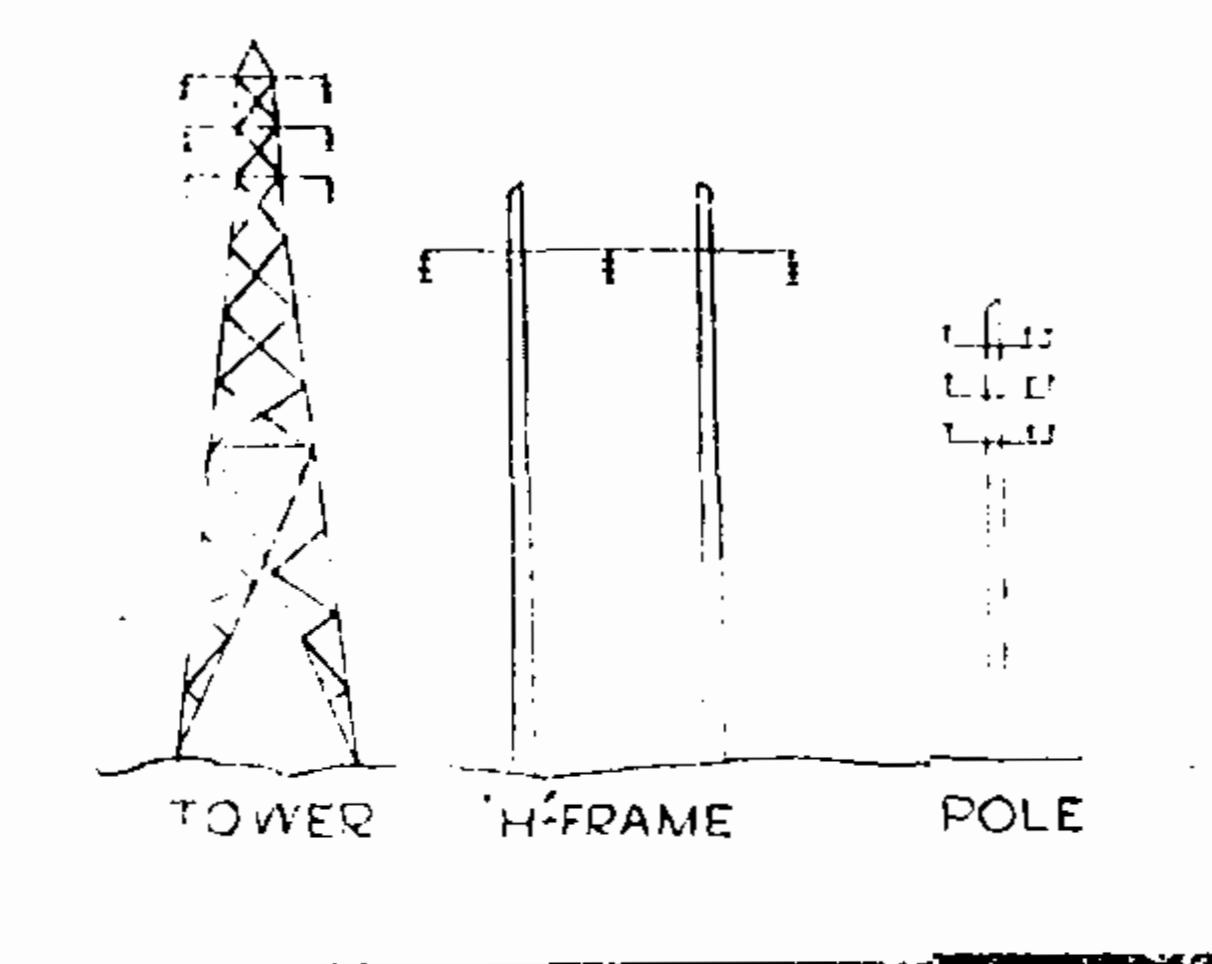
VIRGINIA ELECTRIC & POWER CO.
MESSER ROAD-LEE HALL
TRANSMISSION LINE
PLAT TO ACCOMPANY RIGHT-OF-WAY AGREEMENT
WITH
LUCY MARGARET HARWOOD
DISTRICT COUNTY STATE
JAMESTOWN JAMES CITY VA.
SCALE: 1 INCH = 1000 FT. NO. 166
DATE: OCT. 1940 SURVEYED BY STONE & WEBSTER ENG. CORP.



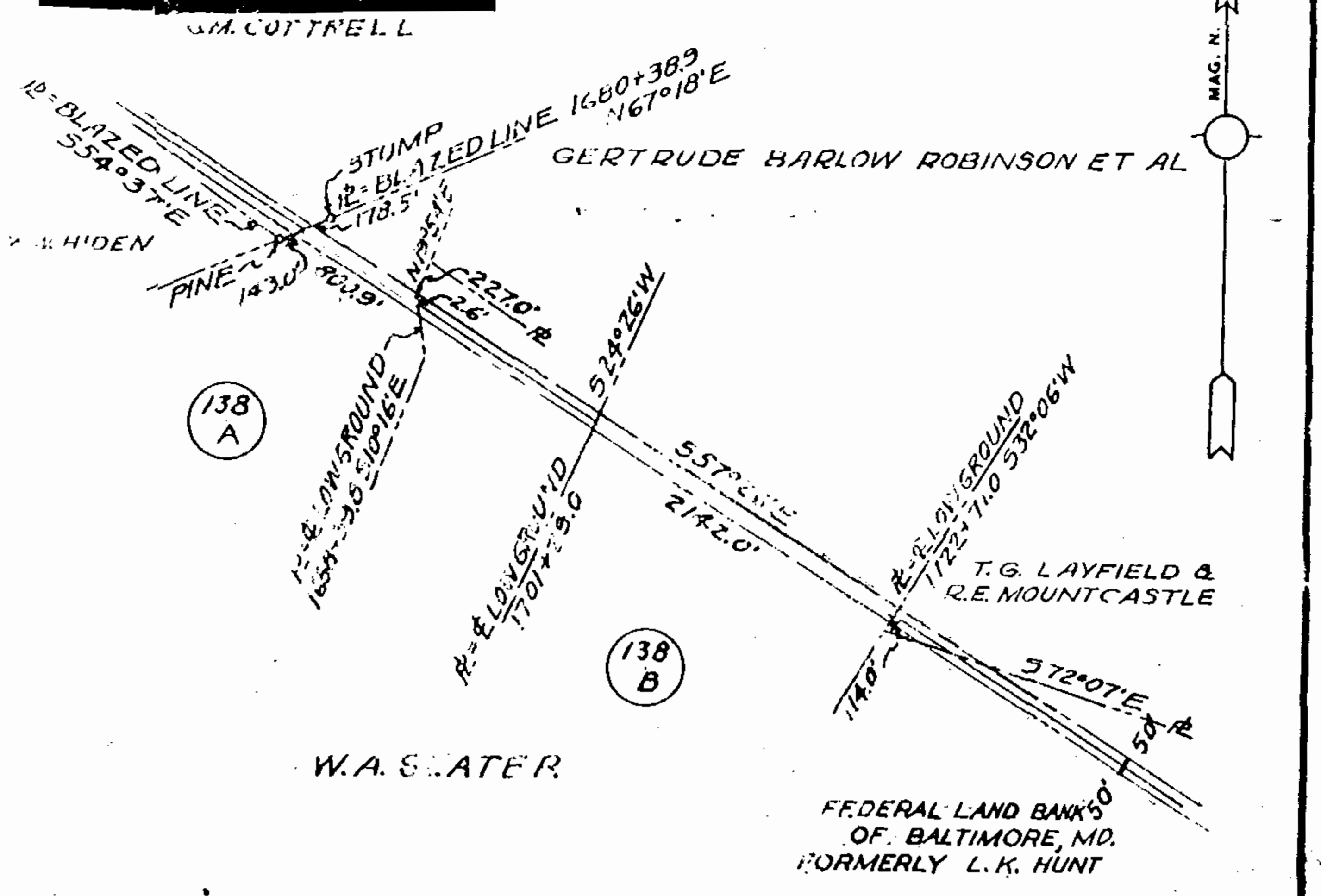
Recorded 3-29-41
in
D. B. 33 p. 228
W. Blanchard Clerk



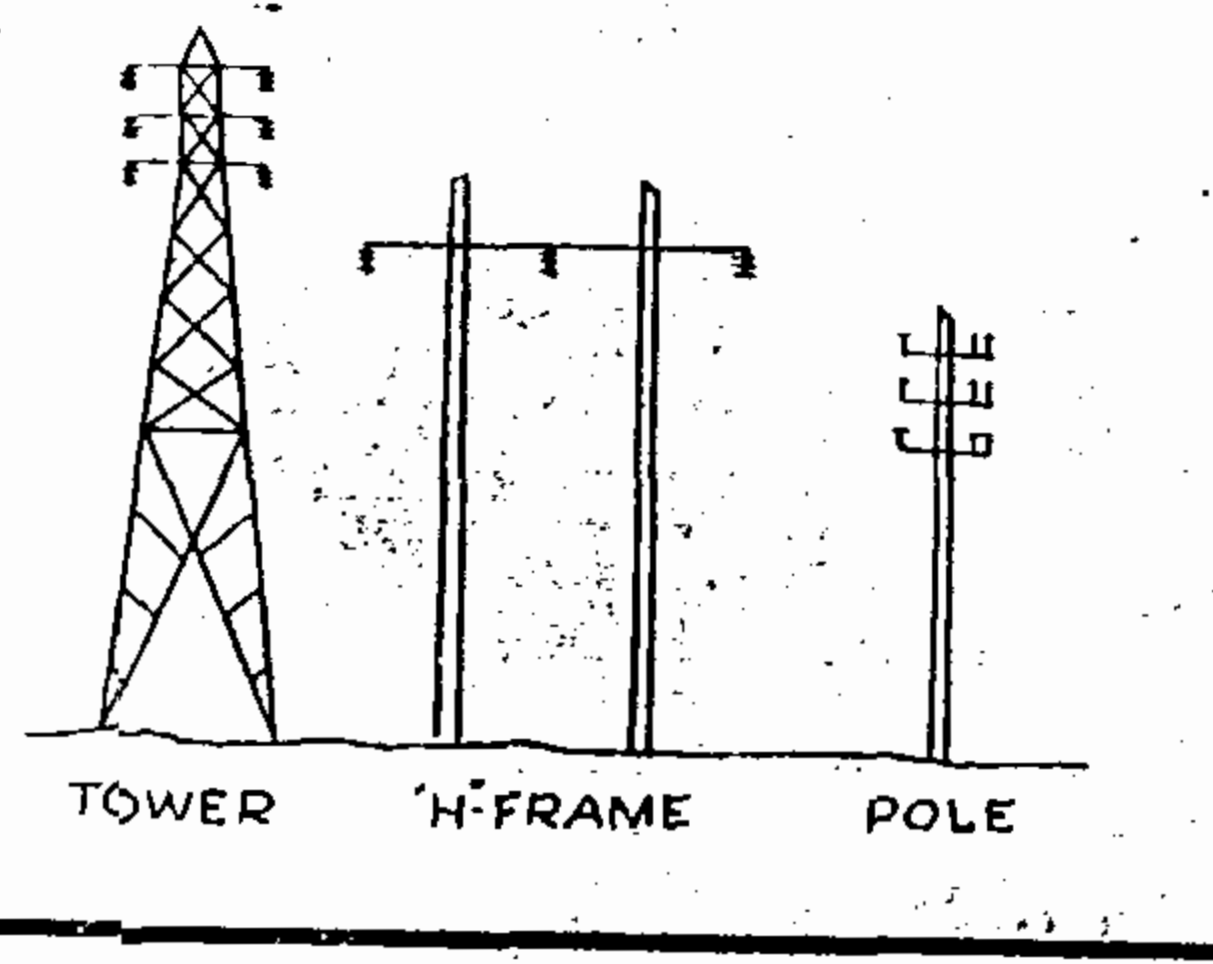
VIRGINIA ELECTRIC & POWER CO.
MESSER ROAD-LEE HALL
TRANSMISSION LINE
PLAT TO ACCOMPANY RIGHT-OF-WAY AGREEMENT
WITH
ELIZABETH MARSTON McHENRY ET AL
DISTRICT COUNTY STATE
POWHTAN JAMES CITY VA.
SCALE: 1 INCH = 400 FT. NO. 152
DATE: AUG. 1940 SURVEYED BY STONE & WEBSTER ENG. CORP.



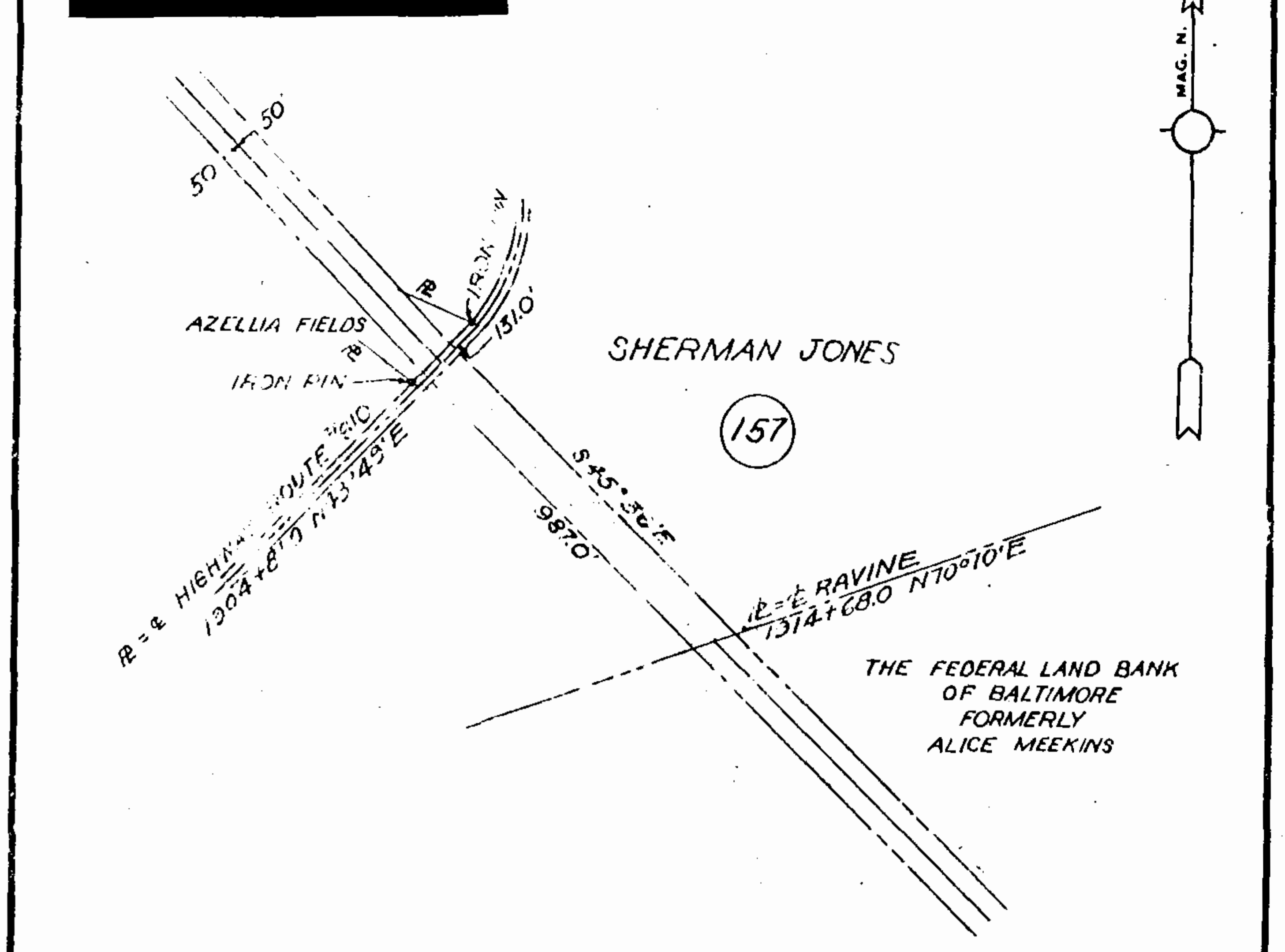
Recorded 3-29-41
in
D. B. 33 p. 228
W. Blanchard Clerk



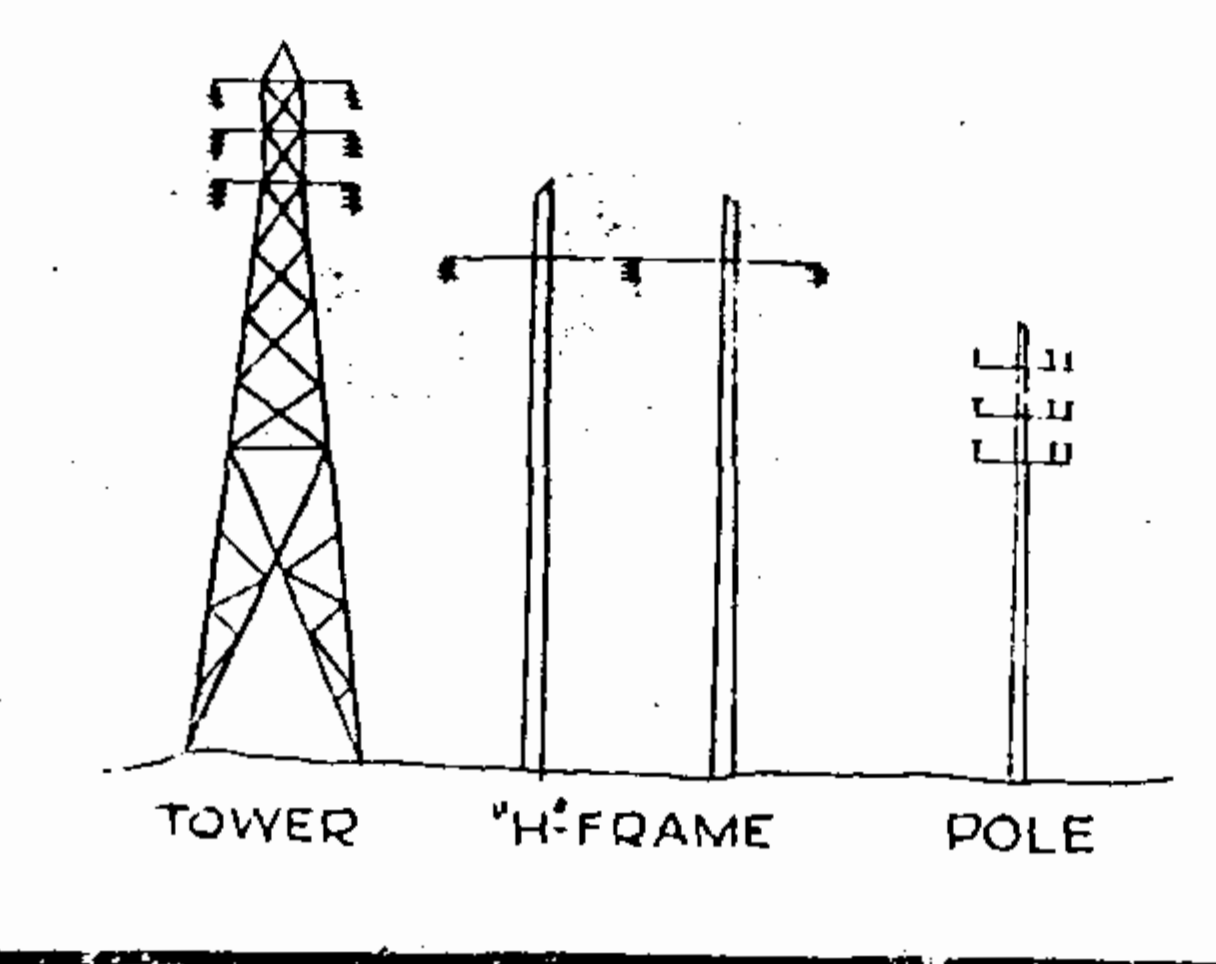
VIRGINIA ELECTRIC & POWER CO.
MESSER ROAD-LEE HALL
TRANSMISSION LINE
PLAT TO ACCOMPANY RIGHT-OF-WAY AGREEMENT
WITH
W.A. SLATER
DISTRICT COUNTY STATE
POWHTAN JAMES CITY VA.
SCALE: 1 INCH = 1000 FT. NO. 138 A, B
DATE: AUG. 1940 SURVEYED BY STONE & WEBSTER ENG. CORP.



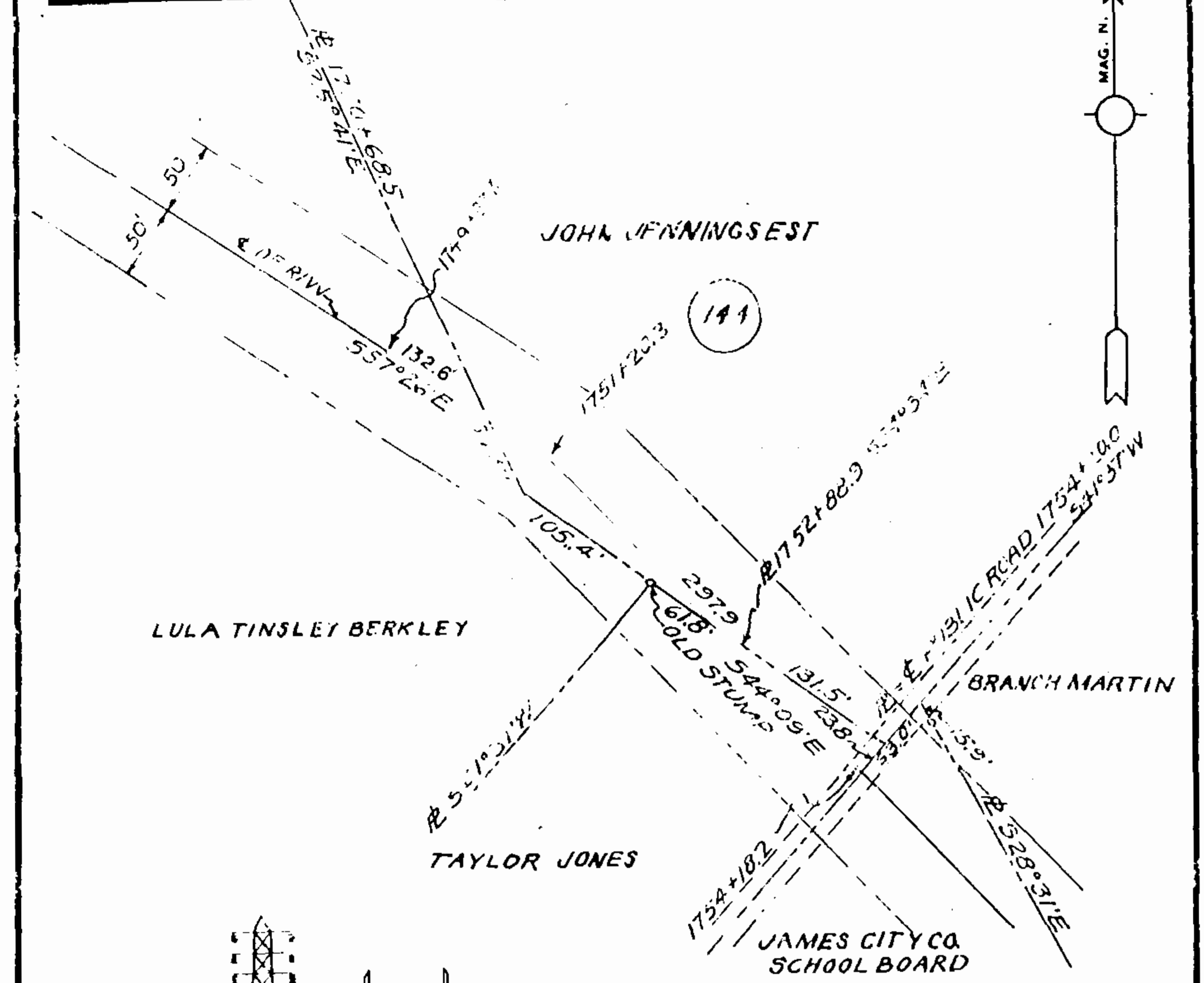
Recorded March 29, 1941
in
D. B. 33 p. 228
W. Blanchard Clerk



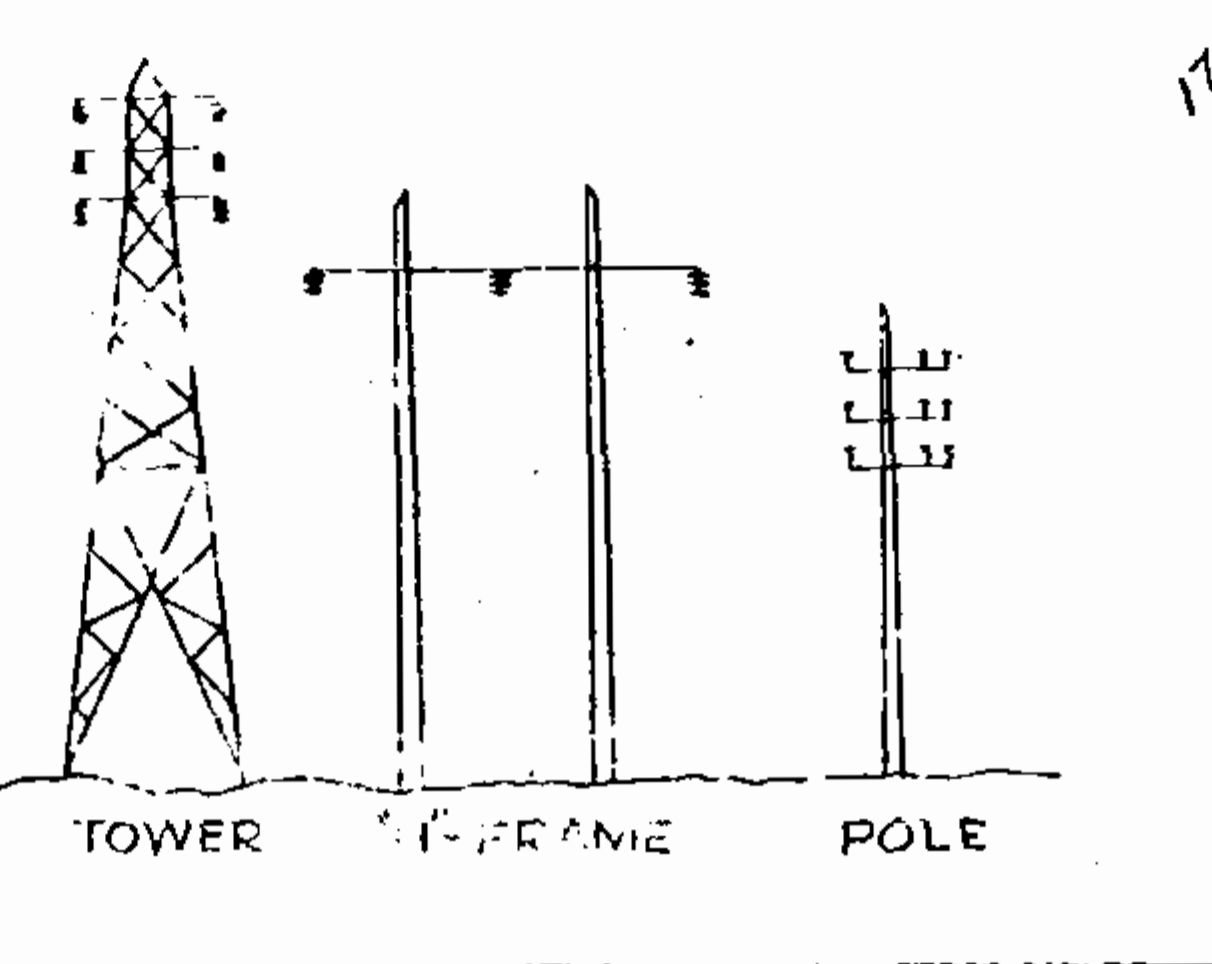
VIRGINIA ELECTRIC & POWER CO.
MESSER ROAD-LEE HALL
TRANSMISSION LINE
PLAT TO ACCOMPANY RIGHT-OF-WAY AGREEMENT
WITH
SHERMAN JONES
DISTRICT COUNTY STATE
POWHTAN JAMES CITY VA.
SCALE: 1 INCH = 400 FT. NO. 157
DATE: OCT. 1940 SURVEYED BY STONE & WEBSTER ENG. CORP.



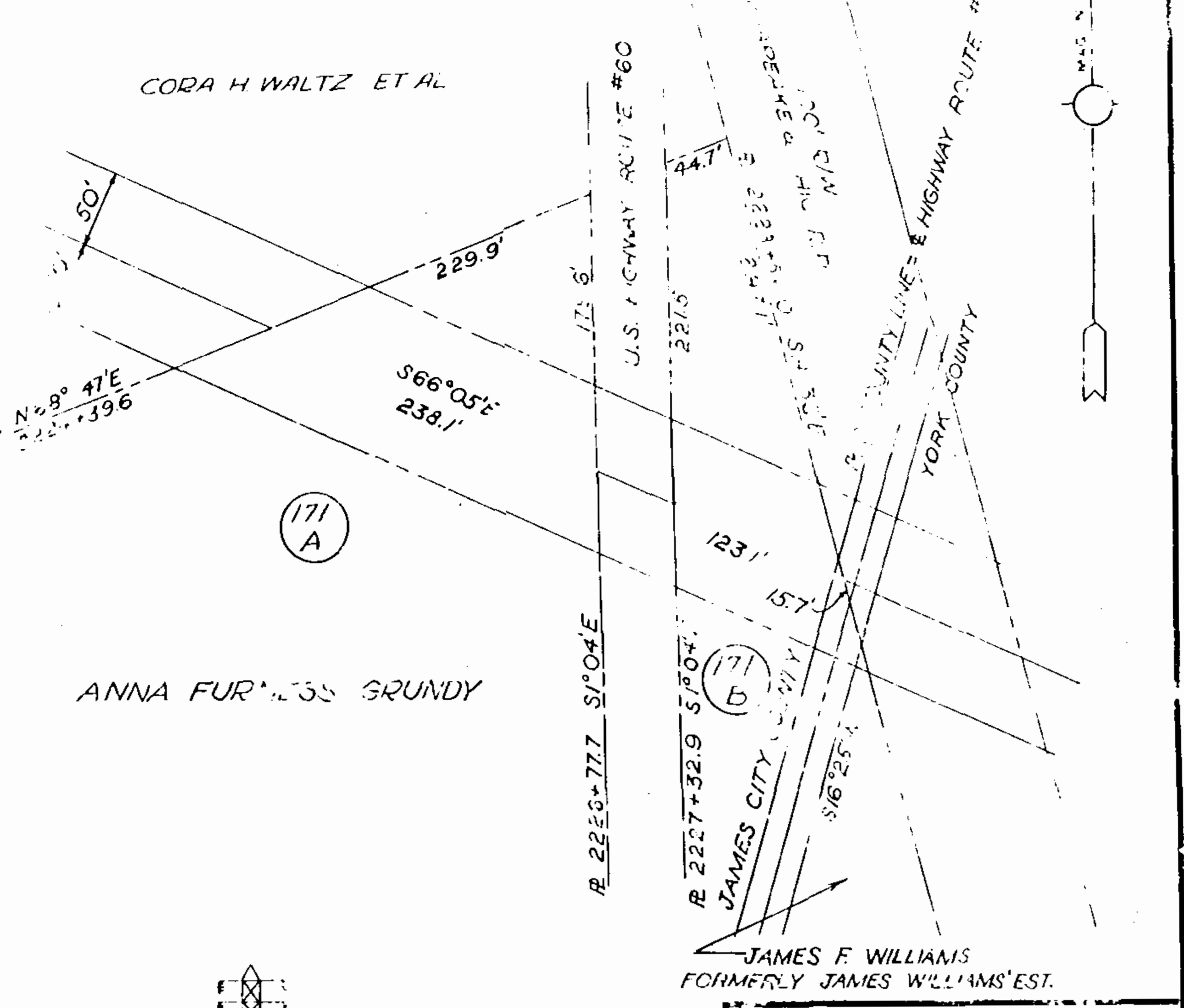
Recorded 3-29-41
in
D. B. 33 p. 228
W. Blanchard Clerk



VIRGINIA ELECTRIC & POWER CO.
MESSER ROAD-LEE HALL
TRANSMISSION LINE
PLAT TO ACCOMPANY RIGHT-OF-WAY AGREEMENT
WITH
JOHN JENNINGS EST
DISTRICT COUNTY STATE
POWHTAN JAMES CITY VA.
SCALE: 1 INCH = 100 FT. NO. 144
DATE: AUG. 1940 SURVEYED BY STONE & WEBSTER ENG. CORP.



Recorded 3-29-41
in
D. B. 33 p. 228
W. Blanchard Clerk



VIRGINIA ELECTRIC & POWER CO.
MESSER ROAD-LEE HALL
TRANSMISSION LINE
PLAT TO ACCOMPANY RIGHT-OF-WAY AGREEMENT
WITH
ANNA FURNESS GRUNDY
DISTRICT COUNTY STATE
JAMESTOWN JAMES CITY VA.
SCALE: 1 INCH = 100 FT. NO. 171 A-R
DATE: OCT. 1940 SURVEYED BY STONE & WEBSTER ENG. CORP.

