

COLONIAL WILLIAMSBURG INCORPORATED

MRS MARY BOYD RYLAND
PARCEL NO. 1

MRS MARY BOYD RYLAND
PARCEL NO. 2

COLONIAL WILLIAMSBURG INCORPORATED

FRANCIS STREET

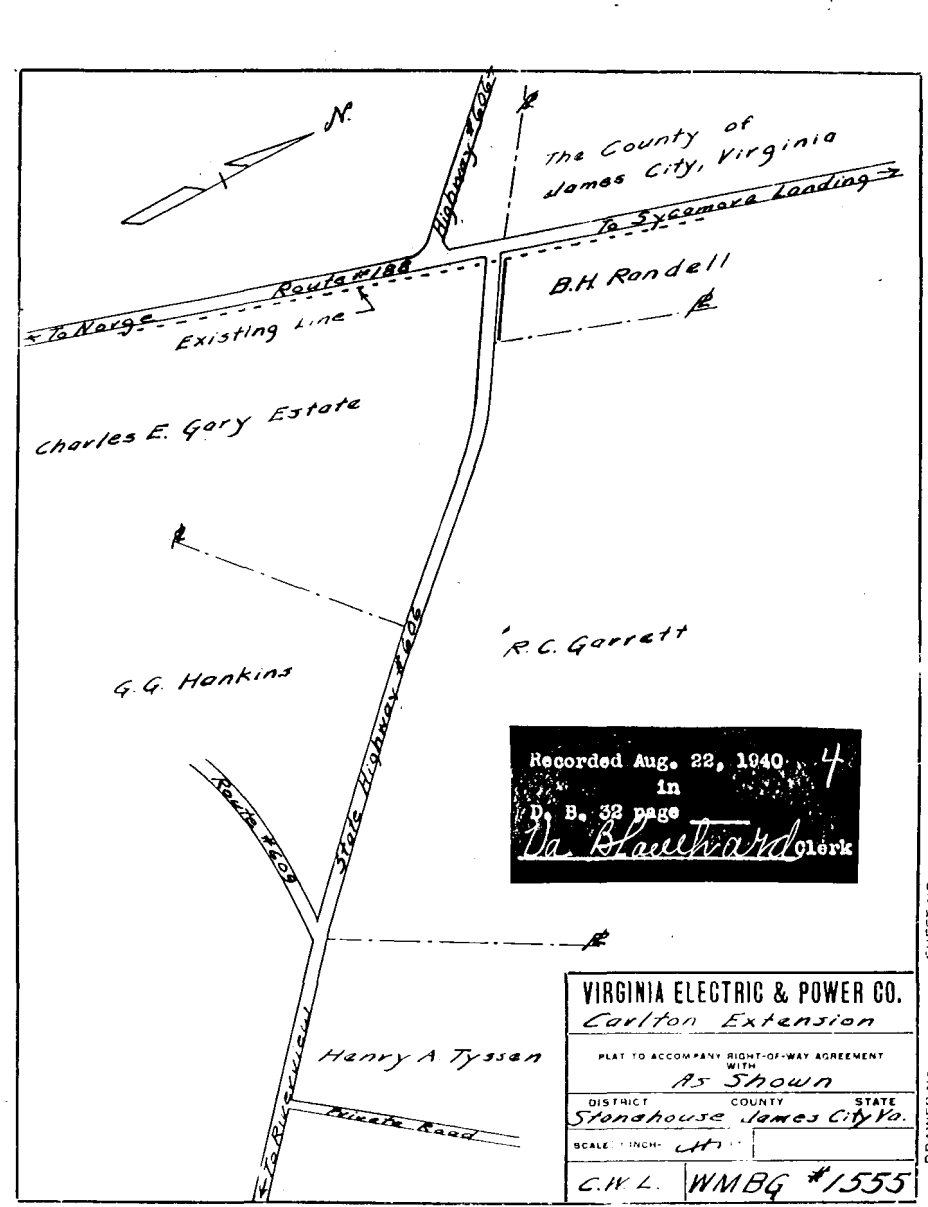
BOTETOURT STREET

COLONIAL WILLIAMSBURG INC.
WILLIAMSBURG VIRGINIA

PLAT SHOWING PROPERTY OF
MRS MARY BOYD RYLAND
SITUATED IN BLOCK 10
SURVEYED JAN. 19, 1940 SCALE 1" = 20'
REFERENCE D.B. NO. 14 P. 322

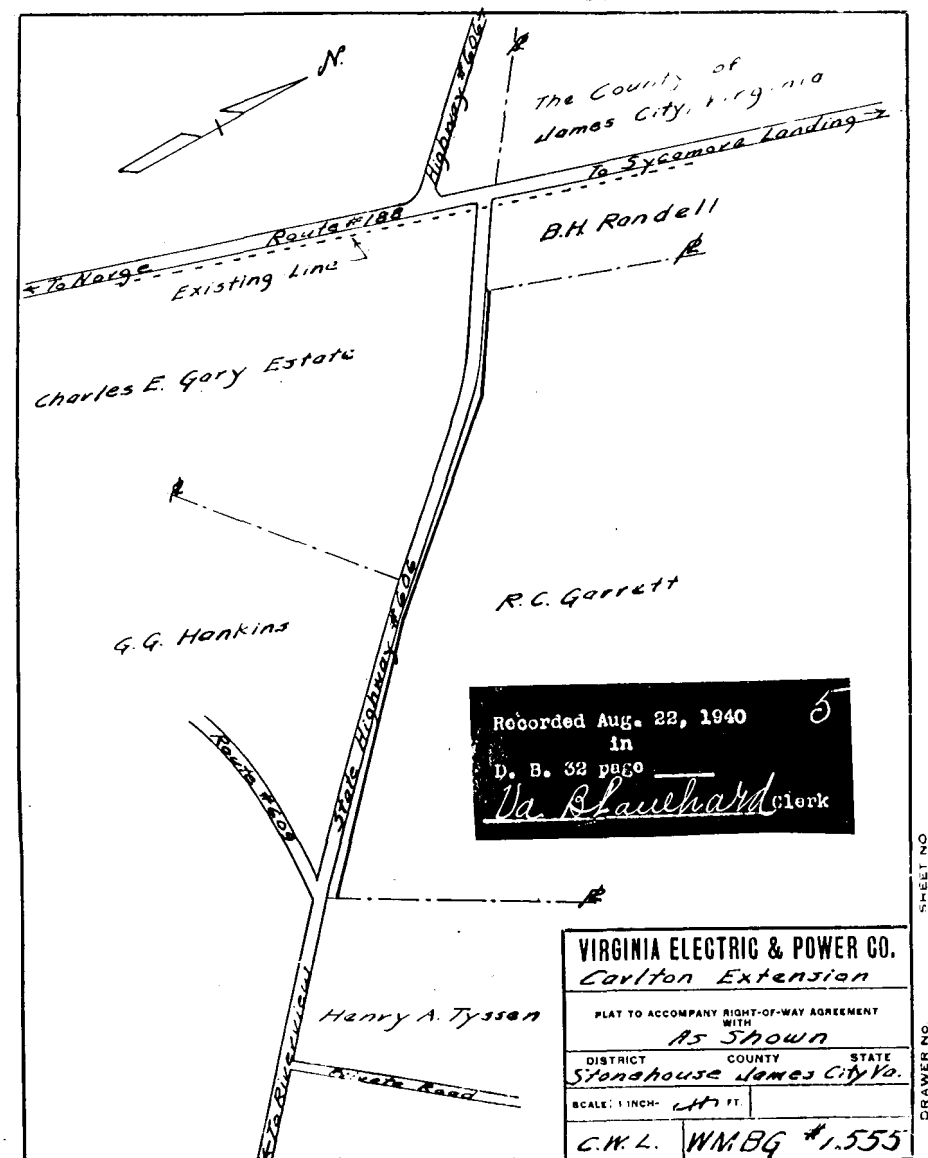
Recorded Aug. 19, 1940,
in
City D. B. 16 P. 309
Va. Blauhardt Clerk

NOTE: BY ORIGINAL GRANTEES, GRANTEES,
SUCCESSIONS, CONVEYANCES AND AGREEMENTS
AND OTHER INSTRUMENTS, RECORDS AND UNRECORDED
OR OTHER LAND MARKS.



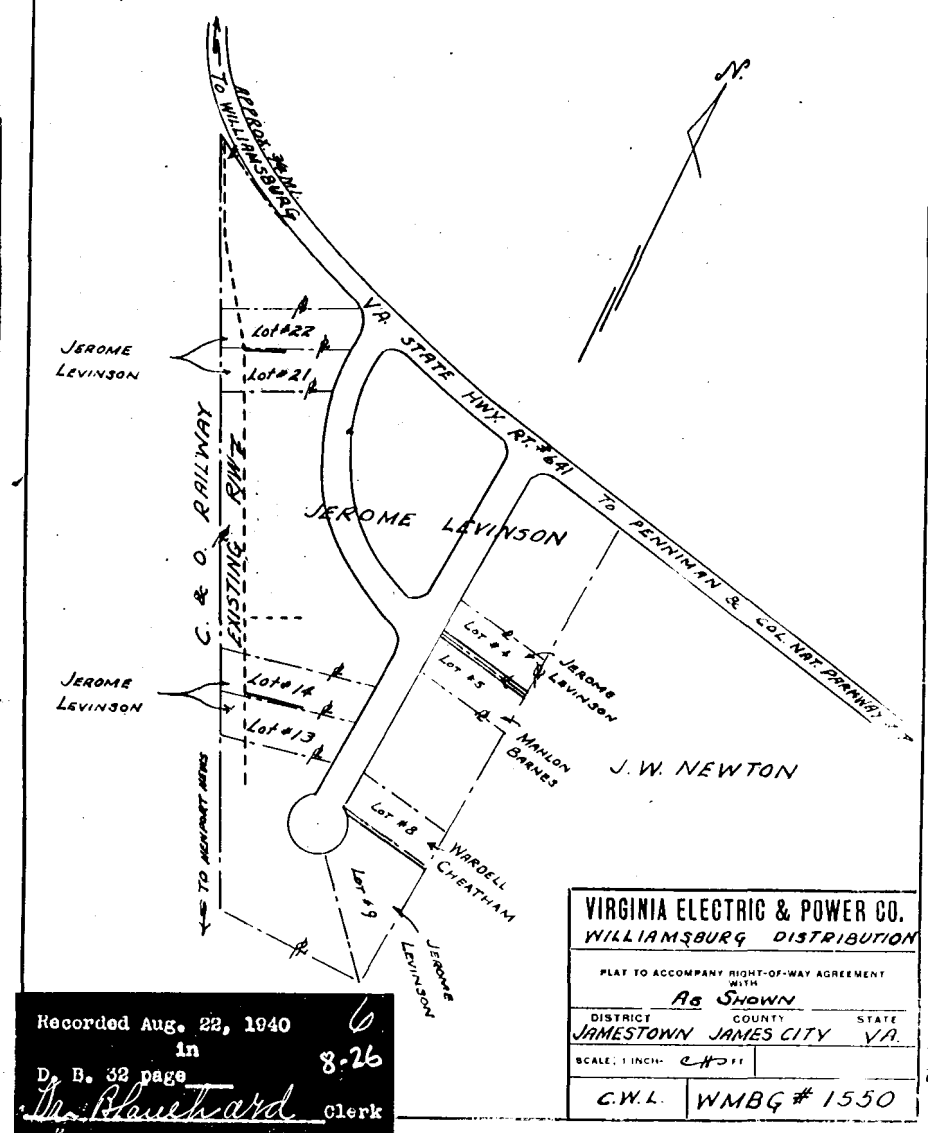
Recorded Aug. 22, 1940, 4
in
D. B. 32 page
Va. Blauhardt Clerk

VIRGINIA ELECTRIC & POWER CO.
Carlton Extension
PLAT TO ACCOMPANY RIGHT-OF-WAY AGREEMENT
WITH
As Shown
DISTRICT COUNTY STATE
Stonewall James City Va.
SCALE: 1 INCH = 40 FT.
C.W.L. WMBG #1555



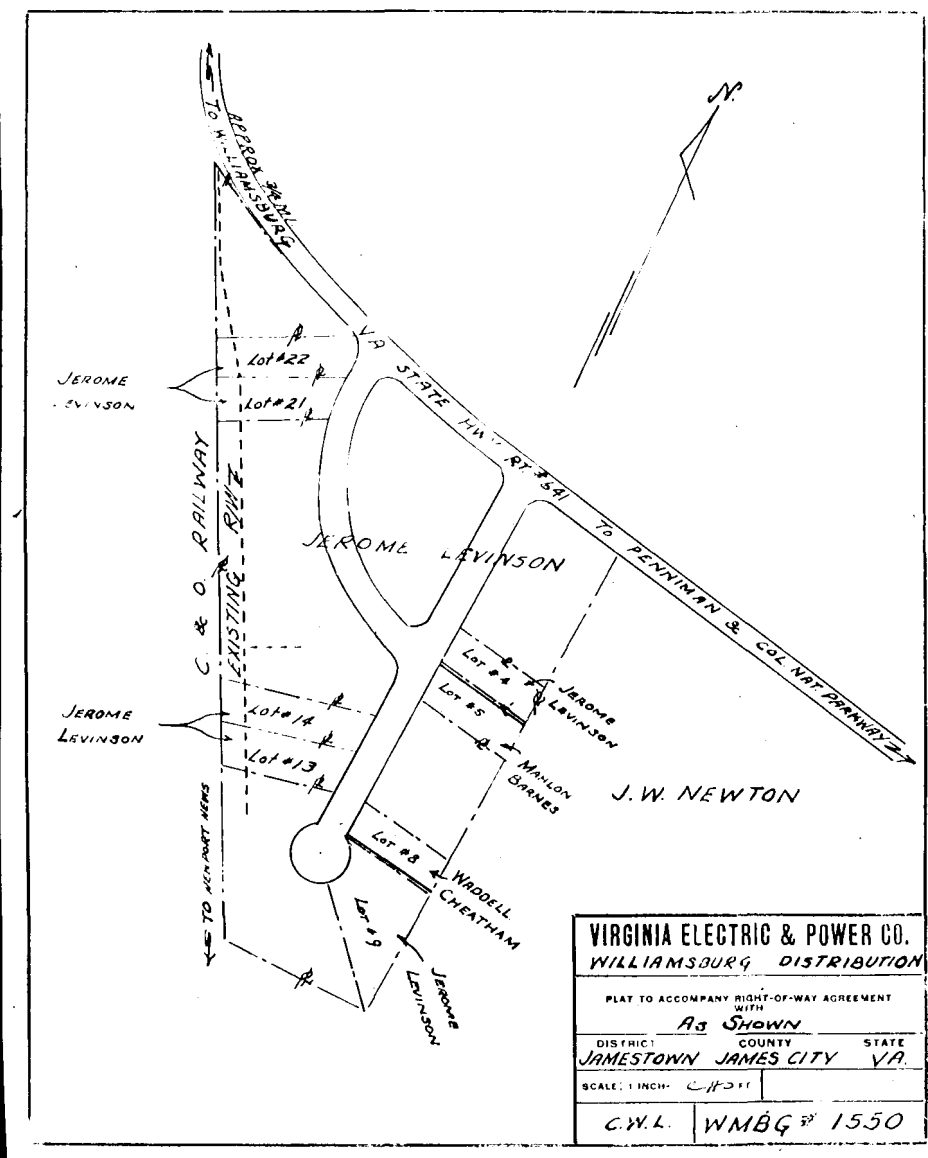
Recorded Aug. 22, 1940, 5
in
D. B. 32 page
Va. Blauhardt Clerk

VIRGINIA ELECTRIC & POWER CO.
Carlton Extension
PLAT TO ACCOMPANY RIGHT-OF-WAY AGREEMENT
WITH
As Shown
DISTRICT COUNTY STATE
Stonewall James City Va.
SCALE: 1 INCH = 40 FT.
C.W.L. WMBG #1555

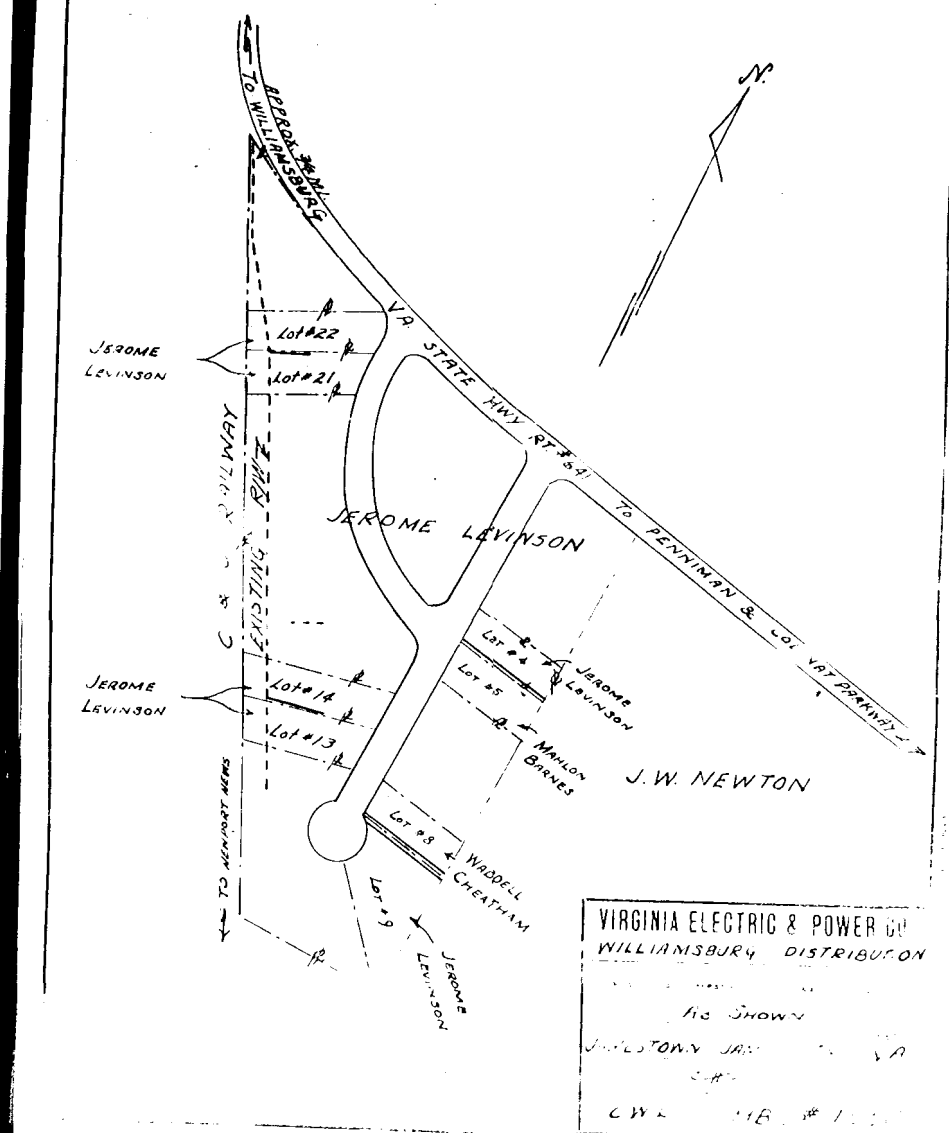


Recorded Aug. 22, 1940, 6
in
D. B. 32 page
Va. Blauhardt Clerk

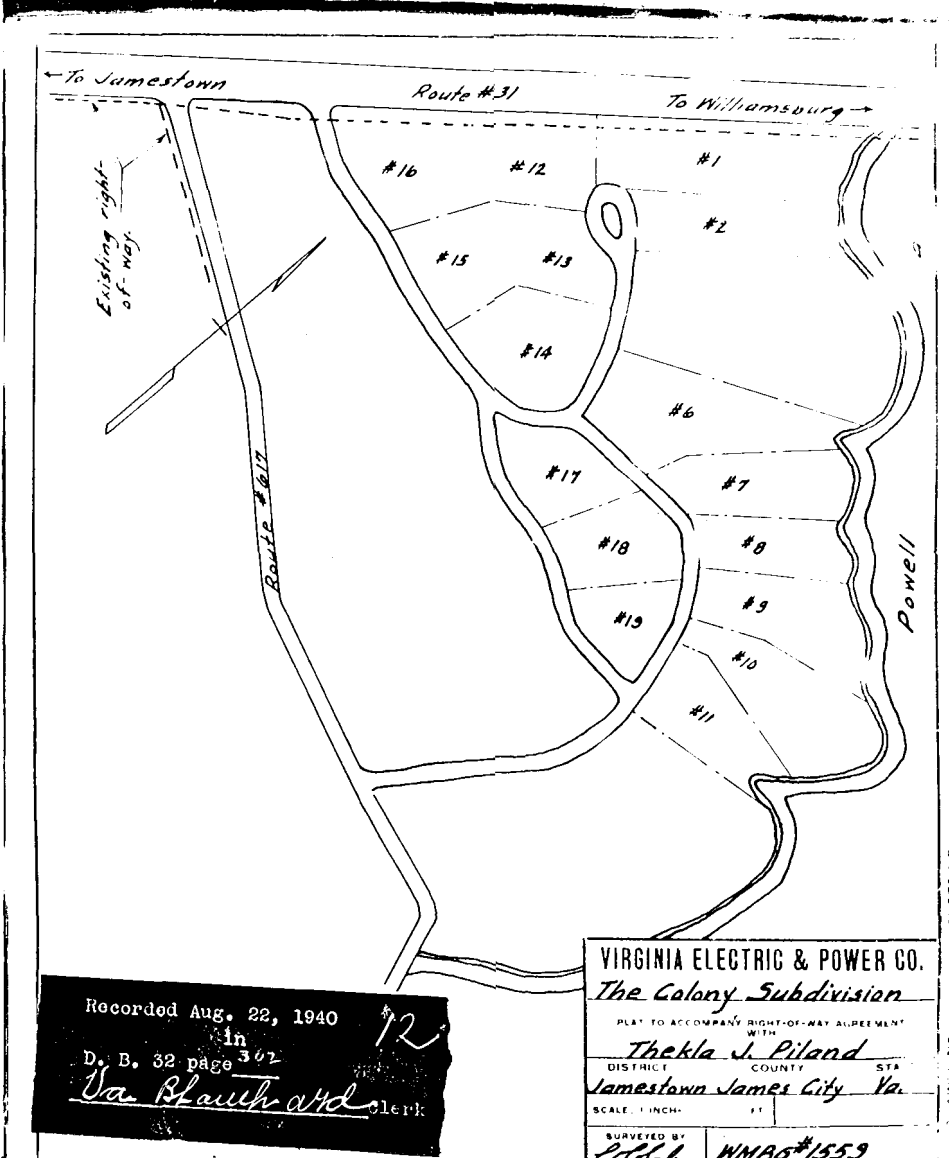
VIRGINIA ELECTRIC & POWER CO.
WILLIAMSBURG DISTRIBUTION
PLAT TO ACCOMPANY RIGHT-OF-WAY AGREEMENT
WITH
As Shown
DISTRICT COUNTY STATE
JAMESTOWN JAMES CITY VA.
SCALE: 1 INCH = 40 FT.
C.W.L. WMBG # 1550



VIRGINIA ELECTRIC & POWER CO.
WILLIAMSBURG DISTRIBUTION
PLAT TO ACCOMPANY RIGHT-OF-WAY AGREEMENT
WITH
As Shown
DISTRICT COUNTY STATE
JAMESTOWN JAMES CITY VA.
SCALE: 1 INCH = 40 FT.
C.W.L. WMBG # 1550



VIRGINIA ELECTRIC & POWER CO.
WILLIAMSBURG DISTRIBUTION
PLAT TO ACCOMPANY RIGHT-OF-WAY AGREEMENT
WITH
As Shown
DISTRICT COUNTY STATE
JAMESTOWN JAMES CITY VA.
SCALE: 1 INCH = 40 FT.
C.W.L. WMBG # 1550



Recorded Aug. 22, 1940, 12
in
D. B. 32 page 302
Va. Blauhardt Clerk

VIRGINIA ELECTRIC & POWER CO.
The Colony Subdivision
PLAT TO ACCOMPANY RIGHT-OF-WAY AGREEMENT
WITH
Thekla J. Piland
DISTRICT COUNTY STATE
Jamestown James City Va.
SCALE: 1 INCH = 40 FT.
C.W.L. WMBG #1555