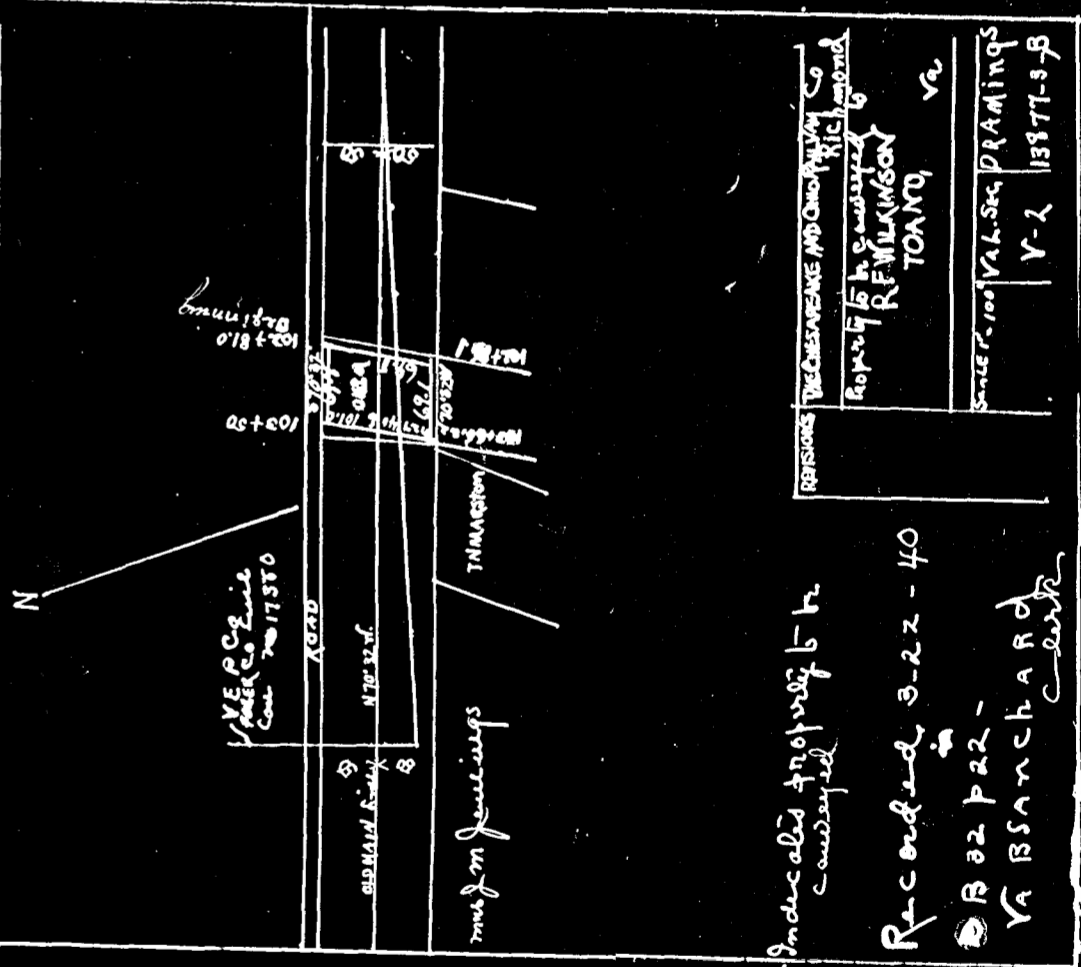


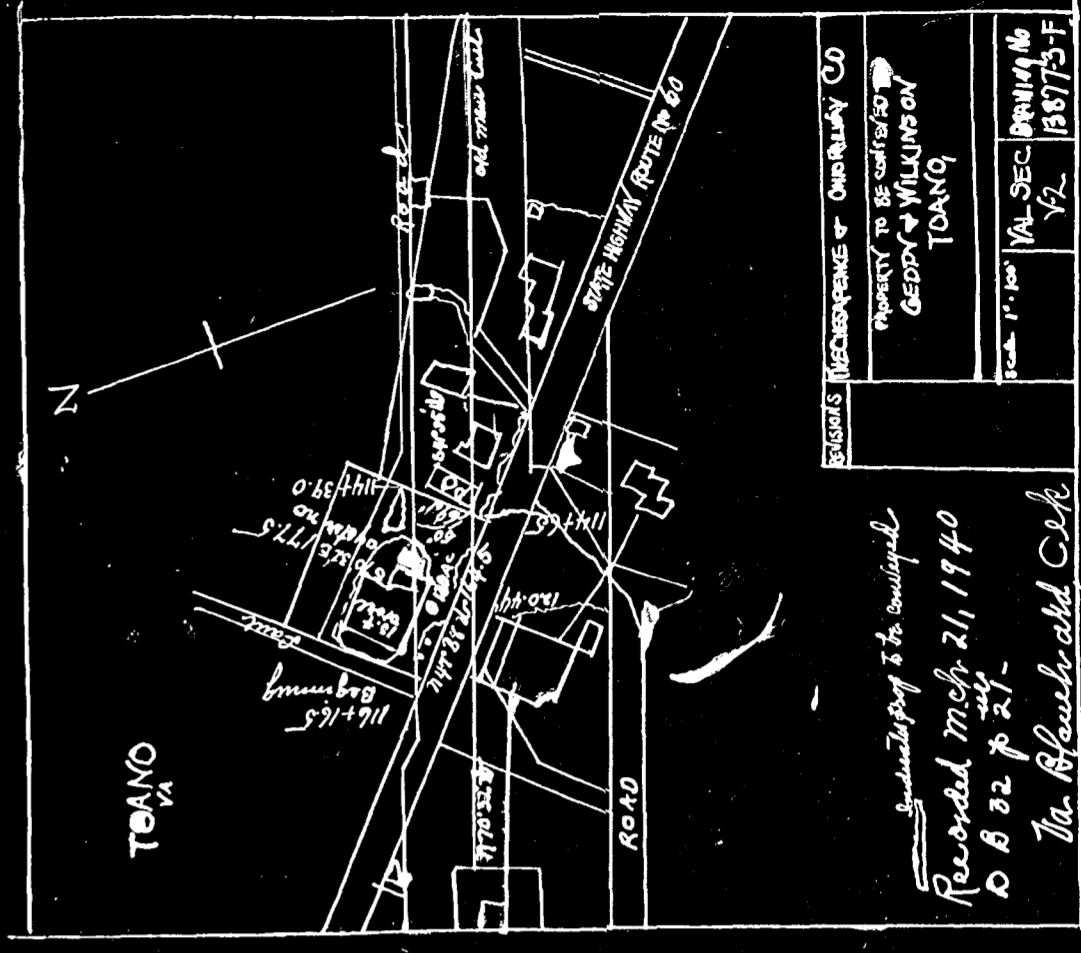
Recorded Dec. 15, 1939
 in
 City D. B. No. 18, p. 149
W. Blanchard Clerk

PRELIMINARY PLAN DEVELOPMENT
 OF
PINE CREST SUBDIVISION

CERTAIN TOPOGRAPHICAL FEATURES
 MAY NECESSITATE MORE OR LESS CHANGE IN
 ALIGNMENT OF STREETS.
 DIMENSIONS GIVEN ON IRREGULAR LOTS ARE
 CORRECTED AND THEREFORE SUBJECT TO
 CORRECTION.
 30' TRAVELED WAY RECOMMENDED BY
 CITY ENGINEER. SCALE 1" = 40'
WILLIAMSBURG VA.



Indicates property to be
 conveyed
 Recorded 3-22-40
 B 02 P 22 -
 W B SANCHARD
 Clerk



Indicates property to be conveyed
 Recorded March 21, 1940
 B 02 P 21 -
 W B SANCHARD
 Clerk