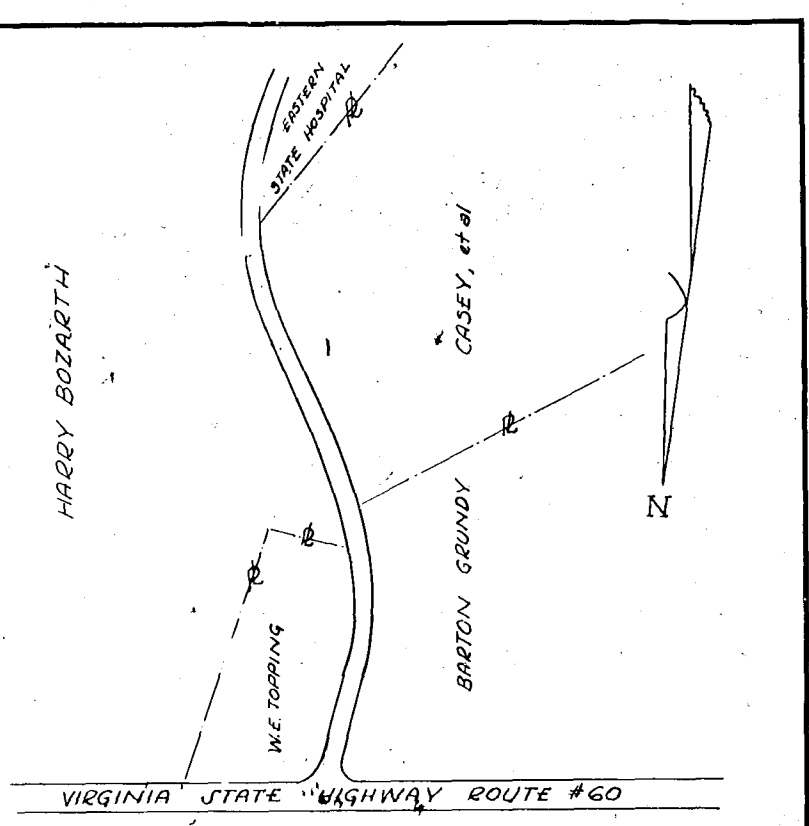


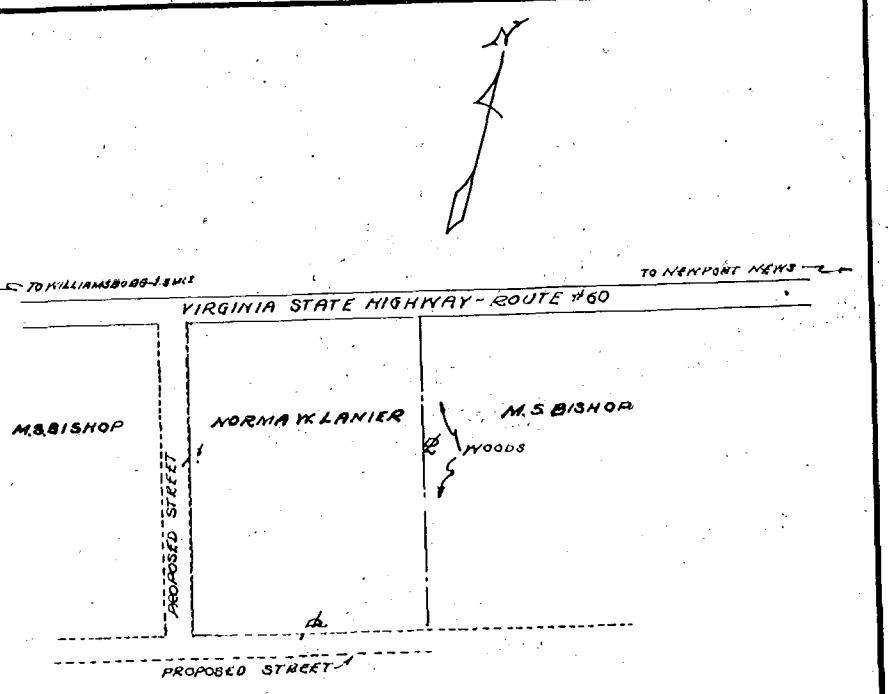
VIRGINIA ELECTRIC & POWER CO.
TOANO-PROY.FORGE DIST.
TRANSMISSION LINE
PLAT TO ACCOMPANY RIGHT-OF-WAY AGREEMENT
WITH
E.J. SLATER
DISTRICT COUNTY STATE
POWhatan JAMES CITY VIRGINIA
SCALE: 1 INCH = 100 FT. FEB. 19, 1936
SURVEYED BY **E.B.H.** WMBG # 1170

Recorded May 25, 1936,
in
D. B. #29, p 6
Va. Blanchard Clerk



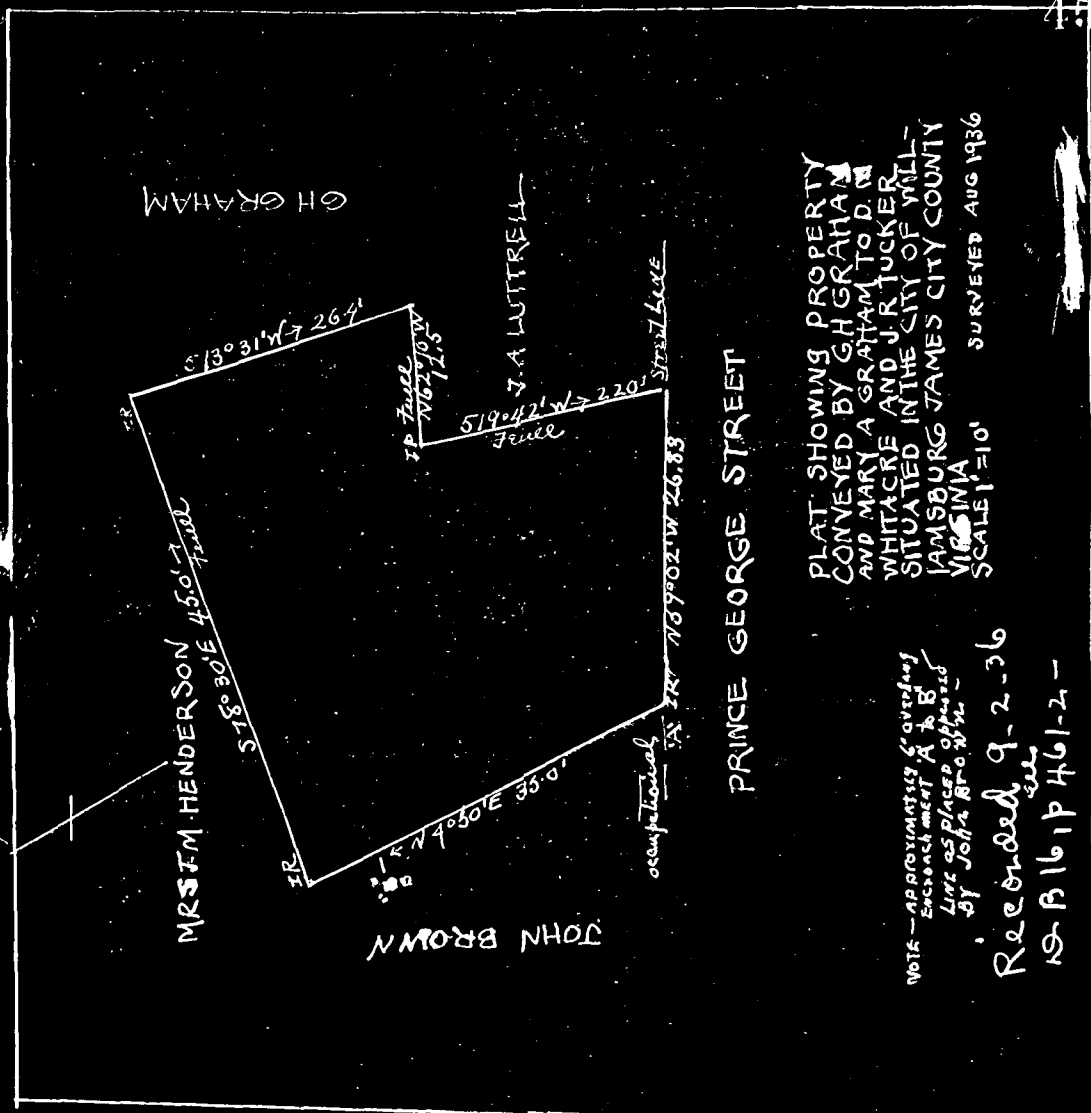
VIRGINIA ELECTRIC & POWER CO.
WILLIAMSBURG DISTRIBUTION
TRANSMISSION LINE
PLAT TO ACCOMPANY RIGHT-OF-WAY AGREEMENT
WITH
W.E. TOPPING & HARRY BOZARTH
DISTRICT COUNTY STATE
JAMESTOWN JAMES CITY VIRGINIA
SCALE: 1 INCH = 100 FT. NOV. 9, 1935
SURVEYED BY **A.H.M. & D.** WMBG # 1162

Recorded May 25, 1936,
in
D. B. #29, page 8
Va. Blanchard Clerk



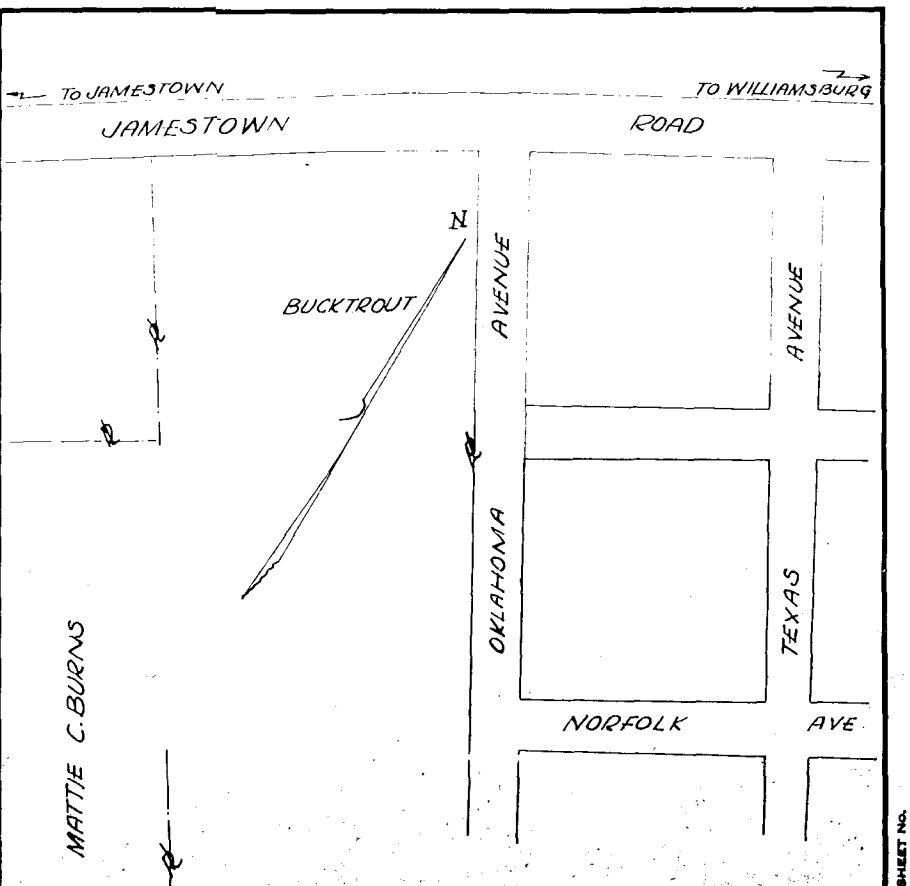
VIRGINIA ELECTRIC & POWER CO.
WMBG-LEE HALL DISTRIBUTION
TRANSMISSION LINE
PLAT TO ACCOMPANY RIGHT-OF-WAY AGREEMENT
WITH
NORMA K LANIER
DISTRICT COUNTY STATE
JAMESTOWN JAMES CITY VIRGINIA
SCALE: 1 INCH = 100 FT. OCT. 15, 1935
SURVEYED BY **C.B.H.** WMBG # 1160

Recorded May 25, 1936,
in
D. B. 29, pp
Virginia Blanchard Clerk



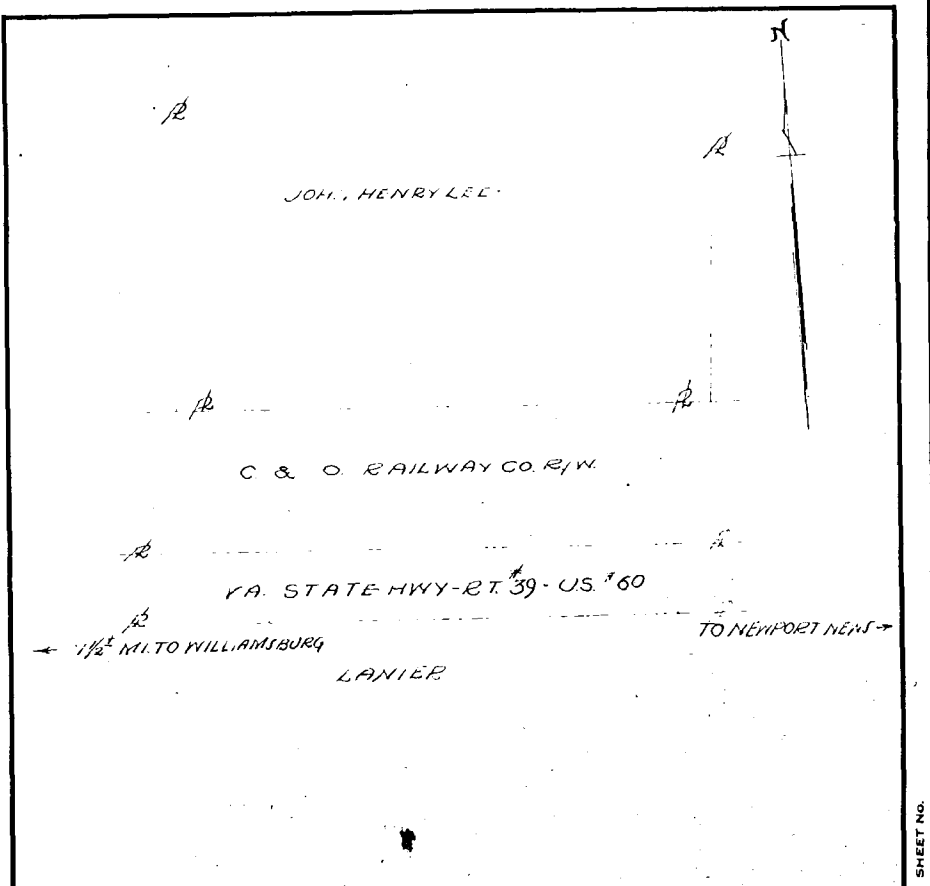
PLAT SHOWING PROPERTY
CONVEYED BY GH GRAHAM
AND MARY A GRAHAM TO D W
WHITACKER AND J R TUCKER
SITUATED IN THE CITY OF WILL-
IAMSBURG JAMES CITY COUNTY
VIRGINIA
SURVEYED AUG 1936
SCALE 1"=10'

NOTE - AS APPROXIMATELY 5' overlies
exchange meet A & B
LINE 55' PLACE OFFERED
BY John B. B. & W. -
Recorded 9-2-36
Va. B. B. P. H. G. 1-2-1



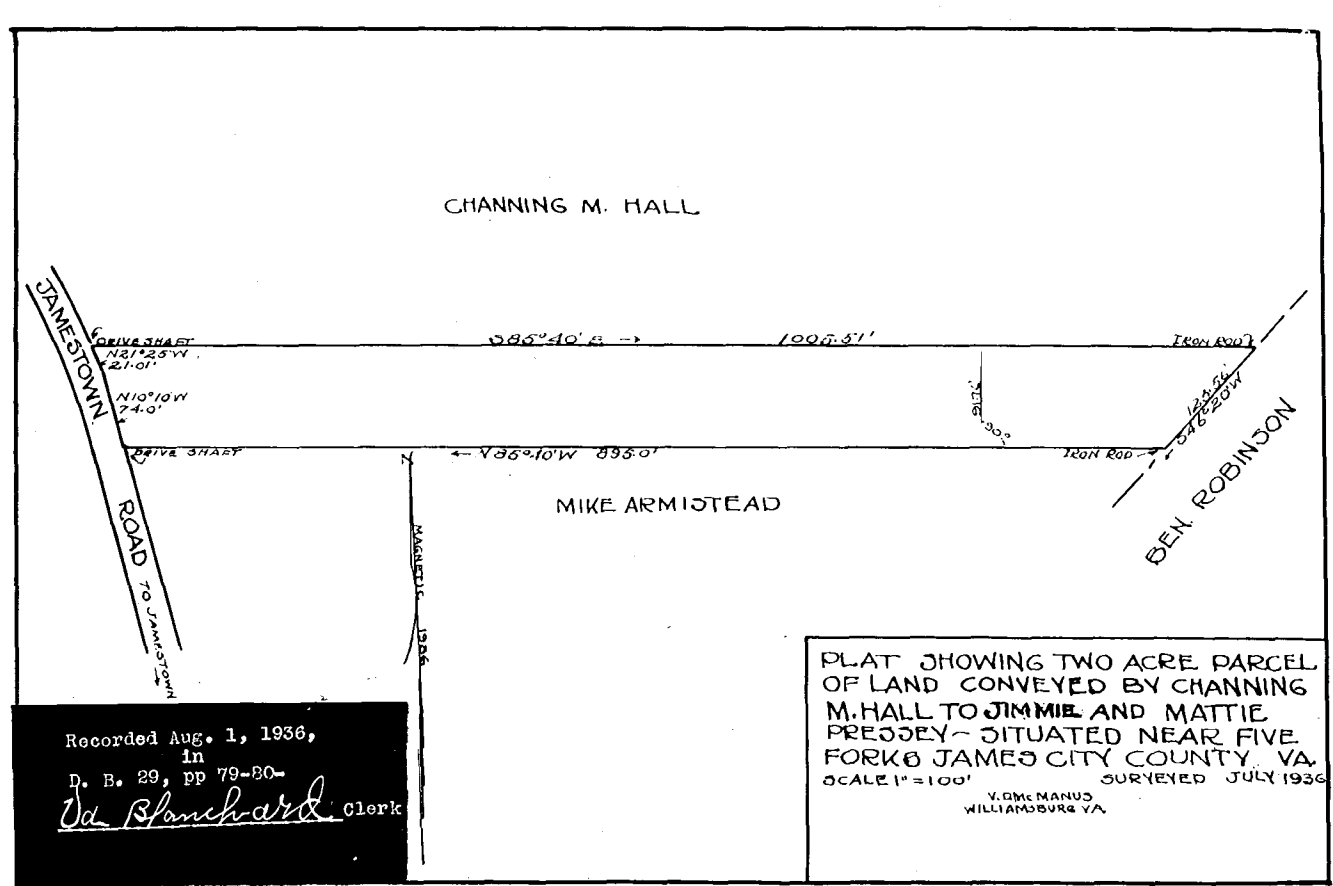
VIRGINIA ELECTRIC & POWER CO.
WILLIAMSBURG DISTRIBUTION
TRANSMISSION LINE
PLAT TO ACCOMPANY RIGHT-OF-WAY AGREEMENT
WITH
BUCKTROUT
DISTRICT COUNTY STATE
CITY OF WILLIAMSBURG JAMES CITY VIRGINIA
SCALE: 1 INCH = 100 FT. JULY 24, 1935
SURVEYED BY **A.H.M. & D.** WMBG # 1150

Recorded May 25, 1936,
in
D. B. #29, p 391
Va. Blanchard Clerk



VIRGINIA ELECTRIC & POWER CO.
WILLIAMSBURG DISTRIBUTION
TRANSMISSION LINE
PLAT TO ACCOMPANY RIGHT-OF-WAY AGREEMENT
WITH
JOHN HENRY LEE
DISTRICT COUNTY STATE
JAMESTOWN JAMES CITY VIRGINIA
SCALE: 1 INCH = 100 FT. MARCH 12, 1936
SURVEYED BY **E.B.H.** WMBG # 1183

Recorded May 25, 1936,
in
D. B. 29, pp 5
Va. Blanchard Clerk



PLAT SHOWING TWO ACRE PARCEL
OF LAND CONVEYED BY CHANNING
M. HALL TO JIMMIE AND MATTIE
PRESSEY - SITUATED NEAR FIVE
FORKS JAMES CITY COUNTY, VA.
SCALE 1"=100' SURVEYED JULY 1936
V.G.M. MANUS
WILLIAMSBURG VA.

Recorded Aug. 1, 1936,
in
D. B. 29, pp 79-80
Va. Blanchard Clerk

G-45