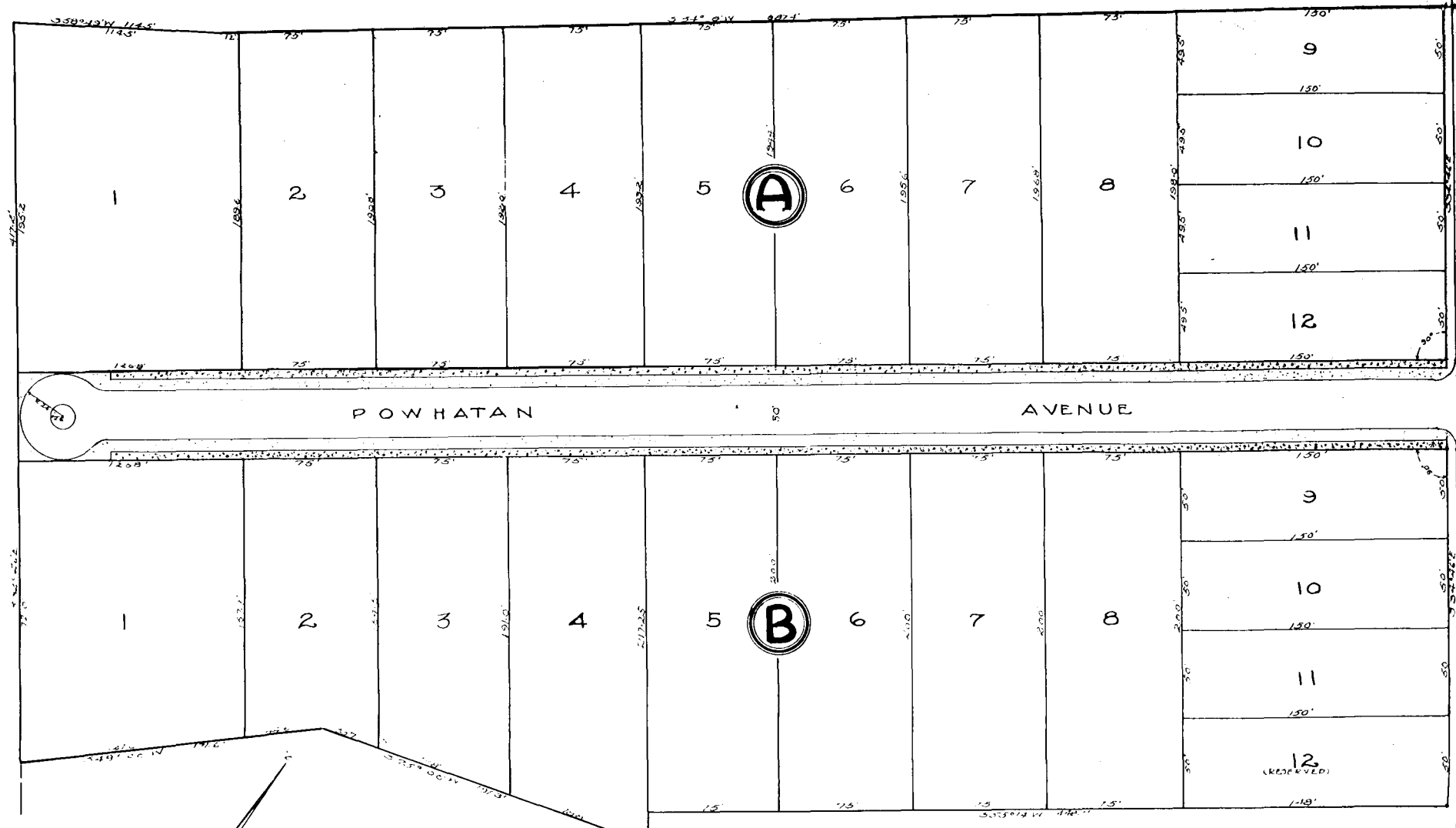


COLLEGE OF
WILLIAM AND MARY

W. L. JONES ESTATE



MATOAKA COURT

OWNED AND DEVELOPED BY
LEONARD OPHEIM
 SITUATED NEAR WILLIAMSBURG JAMES CITY COUNTY VA.
 SURVEYED APRIL 1935 SCALE 1" = 50'

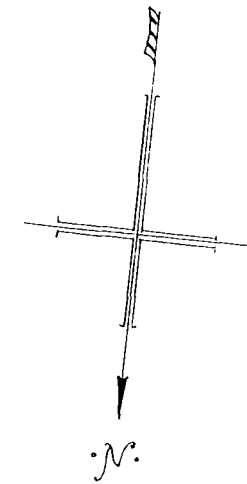
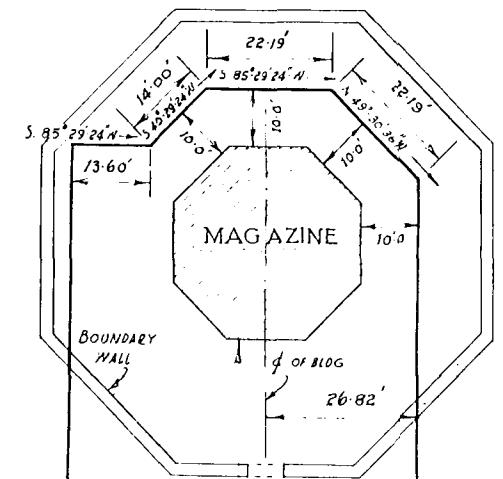
Recorded April 24, 1935.

Virginia Bauchart Clerk

FRANCIS STREET

PROPOSED NORTH LINE

COLONIAL WILLIAMSBURG INC.



COLONIAL WILLIAMSBURG INC.

COLONIAL WILLIAMSBURG INC.

ASSOCIATION FOR THE
 PRESERVATION OF VIRGINIA
 ANTIQUITIES

N 85° 29' 24" E 64.50'
 44'-13'

DUKE OF GLOUCESTER STREET

PLAT SHOWING SURVEY OF PROPERTY KNOWN AS "THE POWDER HORN" OWNED BY THE A.P.V.A. LINES AS SHOWN ESTABLISHED IN ACCORDANCE WITH DEED DESCRIPTIONS RECORDED IN THE "CLERK'S OFFICE"-JAMES CITY COURT HOUSE, VA, SHOWING ALSO THE LOCATION OF THE PROPERTY WITH REFERENCE TO PROPOSED STREET LINES.

Scale 20feet = One inch.

Recorded Sep. 4, 1935.
Virginia Bauchart Clerk

Traced by a.s.c. July 30th 1935. (WALL ADDED).
 Surveyed by B.D. McMANUS, Certified Surveyor July 1935.