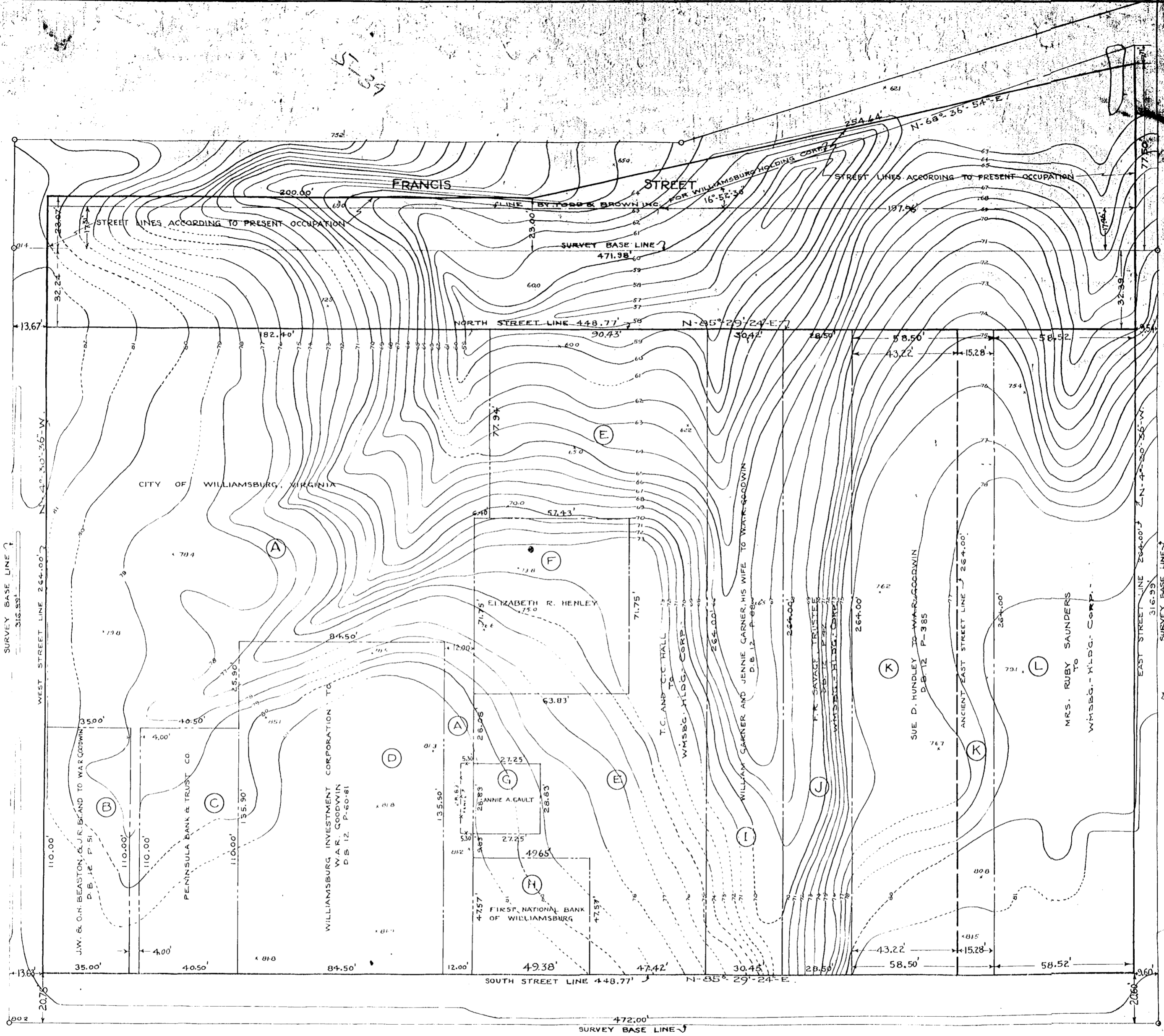


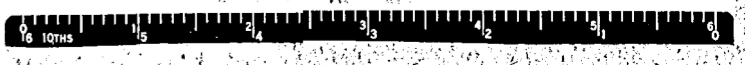
ENGLAND STREET



DUKE OF GLOUCESTER STREET

Recorded Jan'y, 26, 1932,
 in
 D. B. No. 15, page _____
Virginia Beach and Clerk

NOTE: WHERE LOCATIONS OF ORIGINAL OR ANCIENT STREET LINES ARE NOT SAME AS PRESENT STREET LINES THEY ARE SHOWN BY BROKEN LINES, THUS:



NOTE: IRON PINS AT ALL STREET CORNERS AND PROPERTY CORNERS WMSBG. HLDG. CORP.

WILLIAMSBURG HOLDING CORPORATION
 PROPERTY PLAT BLOCK NO. 13-2
 RESTORATION SURVEY WILLIAMSBURG, VIRGINIA
 SCALE: 1" = 20' MARCH 18, 1929
 J. TEMPLE WADDILL
 CERTIFIED CIVIL ENGINEER