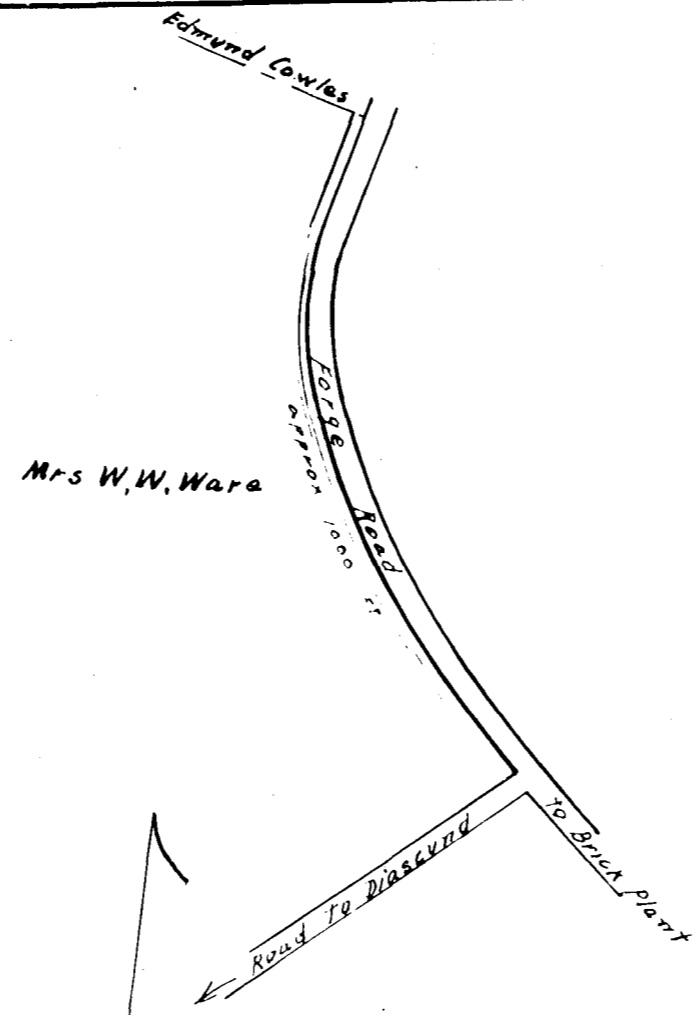


Recorded July 21, 1930,  
in  
D. B. #25, page 553  
The Blanchard, Clerk

VIRGINIA ELECTRIC & POWER CO.		
Proposed line		
TRANSMISSION LINE		
PLAT TO ACCOMPANY RIGHT-OF-WAY AGREEMENT		
WITH		
Edmund Cowles		
DISTRICT	COUNTY	STATE
Powhatan	James City	VA
SCALE: 1 INCH =	FT.	6 - 2 - 30
SURVEYED BY	Wbg. - Forge No. 15	

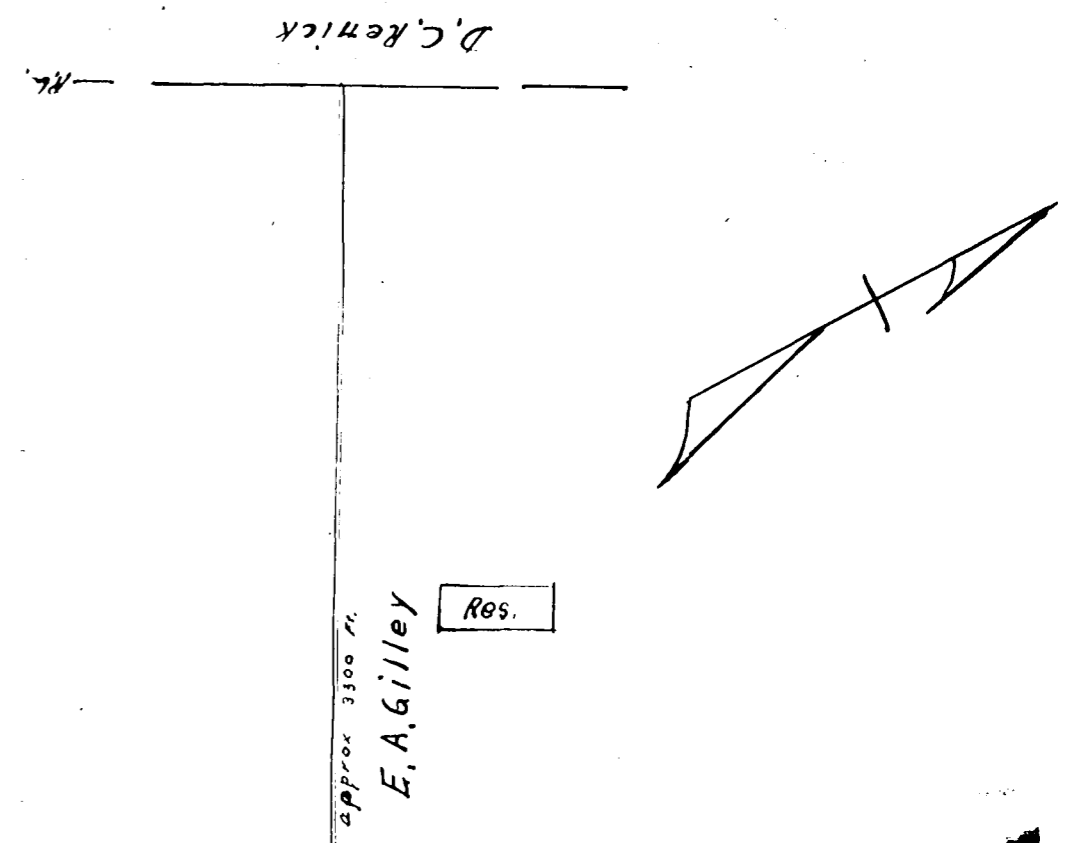
DRAWER NO. SHEET NO.



Recorded July 21, 1930,  
in  
D. B. #25, page 554  
The Blanchard, Clerk

VIRGINIA ELECTRIC & POWER CO.		
Proposed line		
TRANSMISSION LINE		
PLAT TO ACCOMPANY RIGHT-OF-WAY AGREEMENT		
WITH		
Mrs W.W. Ware		
DISTRICT	COUNTY	STATE
Powhatan	James City	VA
SCALE: 1 INCH =	FT.	6 - 2 - 30
SURVEYED BY	Wbg. - Forge No. 16	

DRAWER NO. SHEET NO.

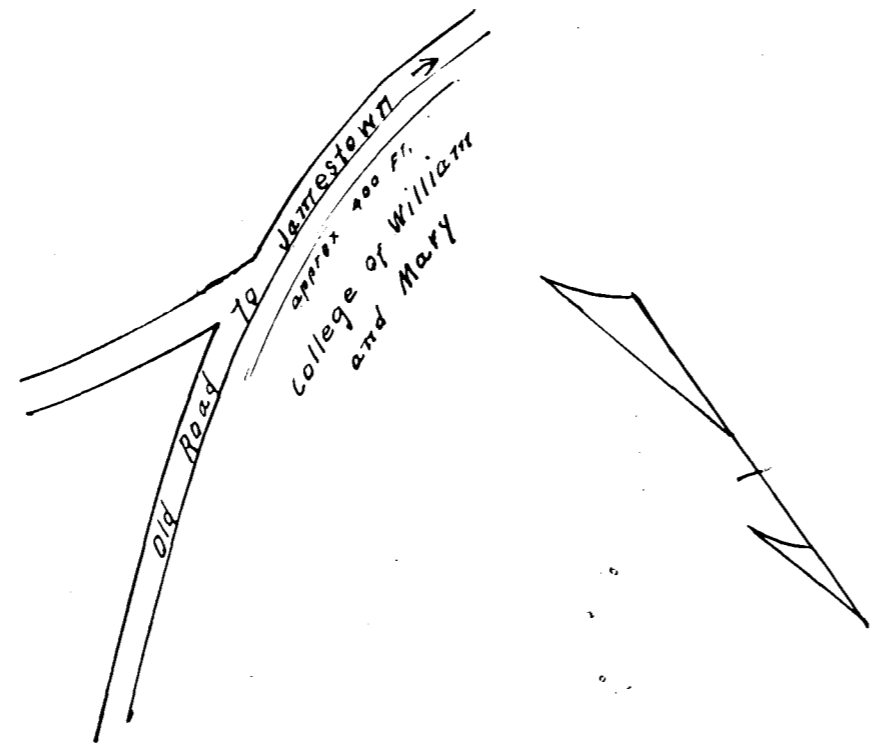


Recorded July 21, 1930,  
in  
D. B. #25, page 552  
The Blanchard, Clerk

VIRGINIA ELECTRIC & POWER CO.		
Proposed line		
TRANSMISSION LINE		
PLAT TO ACCOMPANY RIGHT-OF-WAY AGREEMENT		
WITH		
E.A. Gilley		
DISTRICT	COUNTY	STATE
Jamesston	James City	VA
SCALE: 1 INCH =	FT.	4 - 24 - 30
SURVEYED BY	W-J-No - 8	

DRAWER NO. SHEET NO.

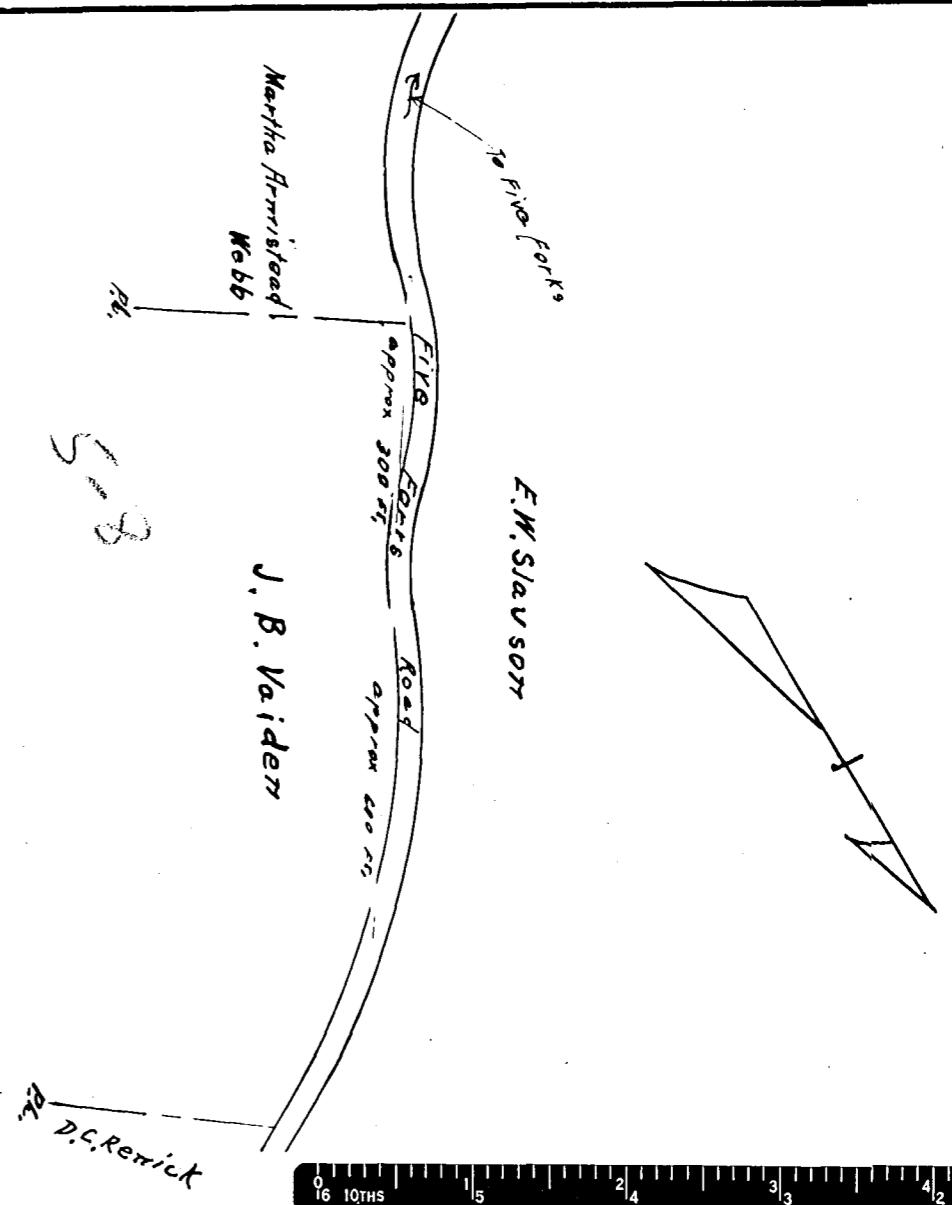
Recorded July 21, 1930,  
in  
D. B. #25, page 559  
The Blanchard, Clerk



VIRGINIA ELECTRIC & POWER CO.		
Proposed line		
TRANSMISSION LINE		
PLAT TO ACCOMPANY RIGHT-OF-WAY AGREEMENT		
WITH		
College of William and Mary		
DISTRICT	COUNTY	STATE
Jamesston	James City	VA
SCALE: 1 INCH =	FT.	4 - 24 - 30
SURVEYED BY	W-J-No. 21	

DRAWER NO. SHEET NO.

Recorded July 21, 1930,  
in  
D. B. #25, page 557  
The Blanchard, Clerk



VIRGINIA ELECTRIC & POWER CO.		
Proposed line		
TRANSMISSION LINE		
PLAT TO ACCOMPANY RIGHT-OF-WAY AGREEMENT		
WITH		
J.B. Valden		
DISTRICT	COUNTY	STATE
Jamesston	James City	VA
SCALE: 1 INCH =	FT.	6 - 23 - 30
SURVEYED BY	W-J-No. 22	

DRAWER NO. SHEET NO.

