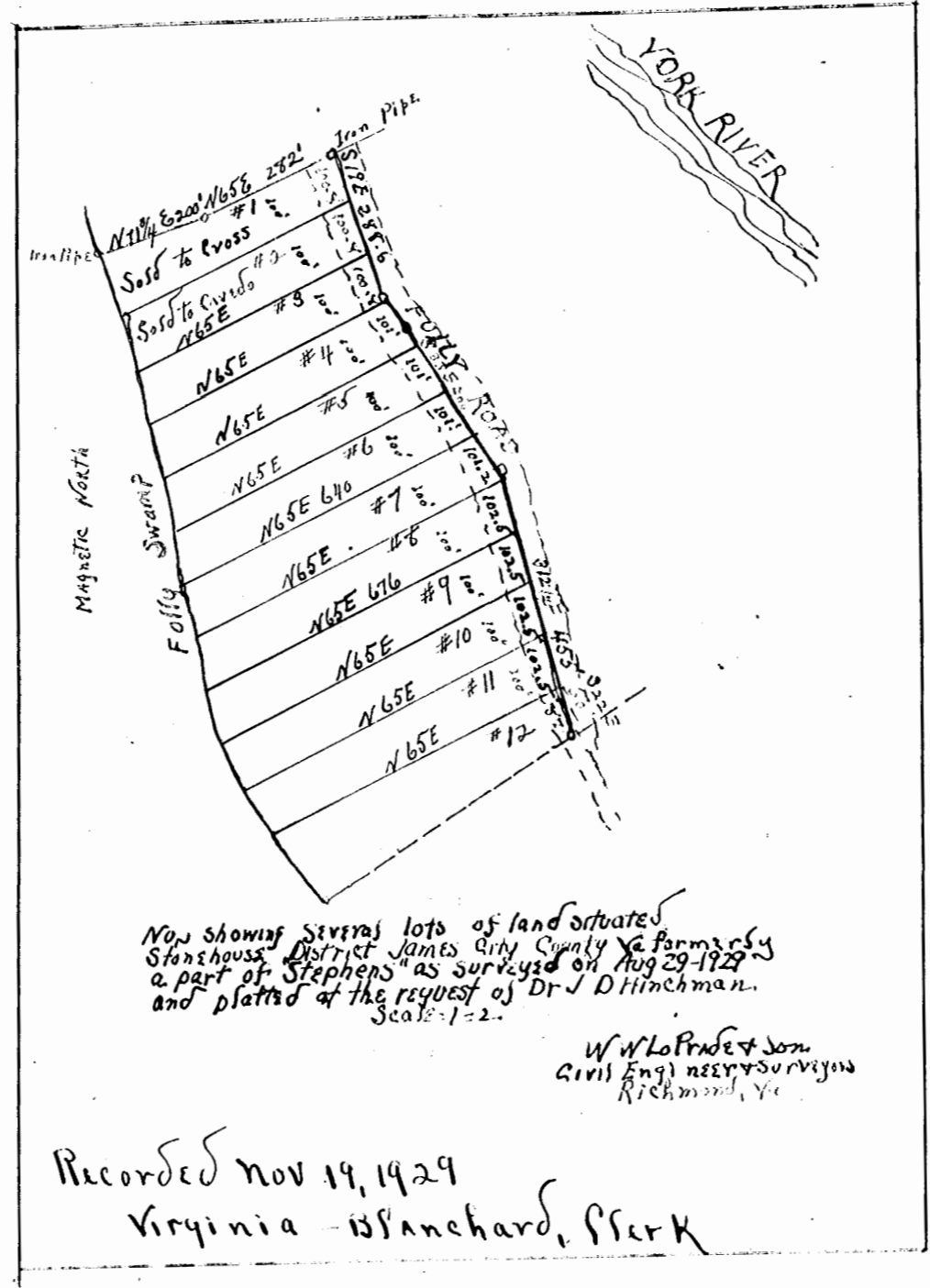


PLOT OF
 A PART OF RICHMECK FARM
 PROPERTY OF W. B. BURMS
 JAMESTOWN DISTRICT
 JAMES CITY COUNTY

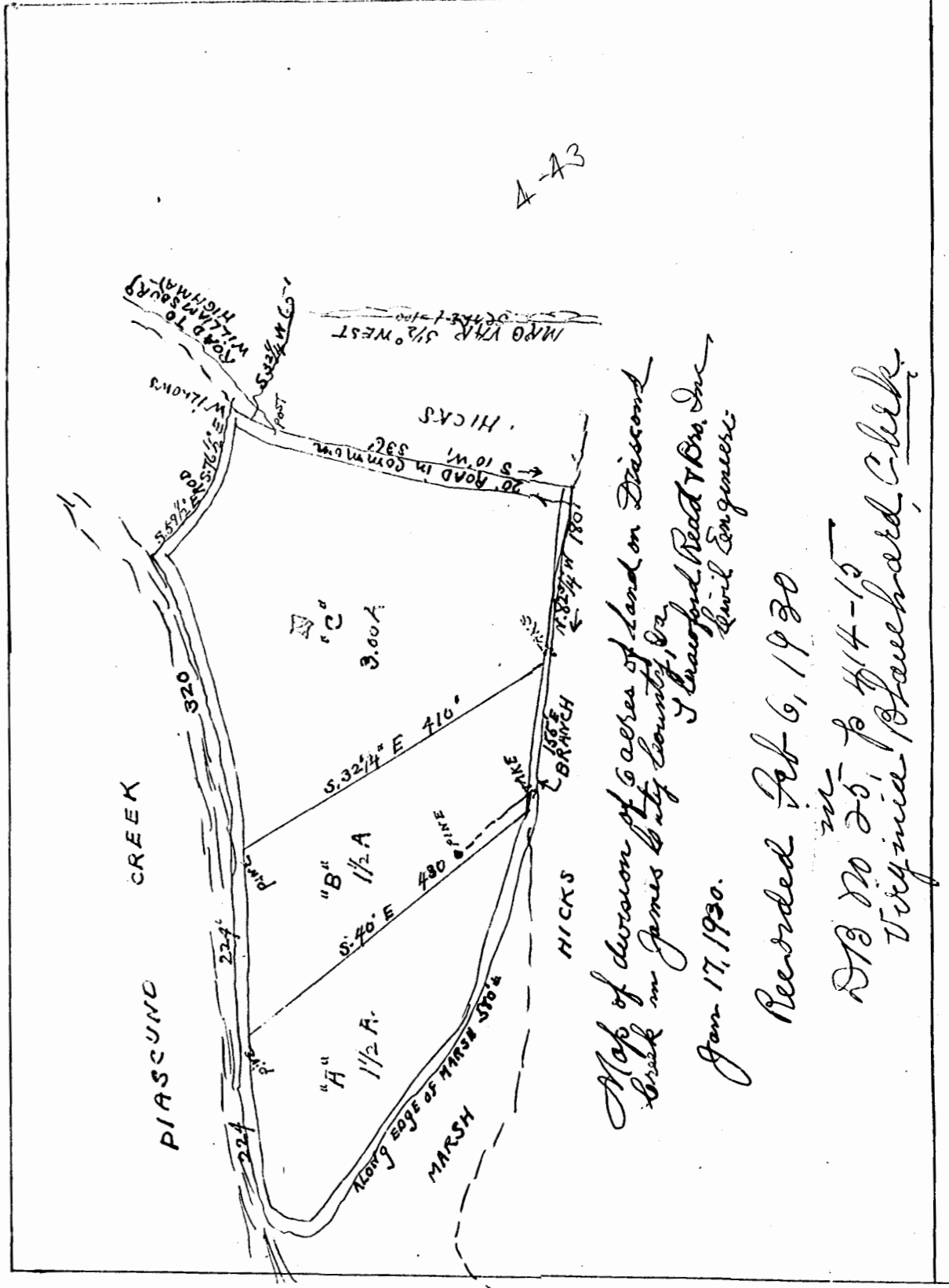
Recorded Nov 12, 1929
 in
 D B 25, p. 346
 Tech
 Virginia Blanchard,
 Clerk

SURVEYED September 16, 1928
 M. M. Thomas
 Surveyor



Recorded Nov 19, 1929
 Virginia - Blanchard, Clerk

Now showing several lots of land situated
 Stonehouse District James City County Va formerly by
 a part of Stephens as surveyed on Aug 29-1929
 and platted at the request of Dr J D Hinchman.
 Scale 1=2.
 W W LoPrickett Jr
 Civil Engl near & Surveyor
 Richmond, Va



Map of division of 6 acres of land on Piassund
 Creek in James City County, Va
 J. Crawford Reed, Jr.
 Civil Engineer
 Jan 17, 1930.

Recorded Feb 6, 1930

DB 20 25, p 44-15
 Virginia Blanchard, Clerk