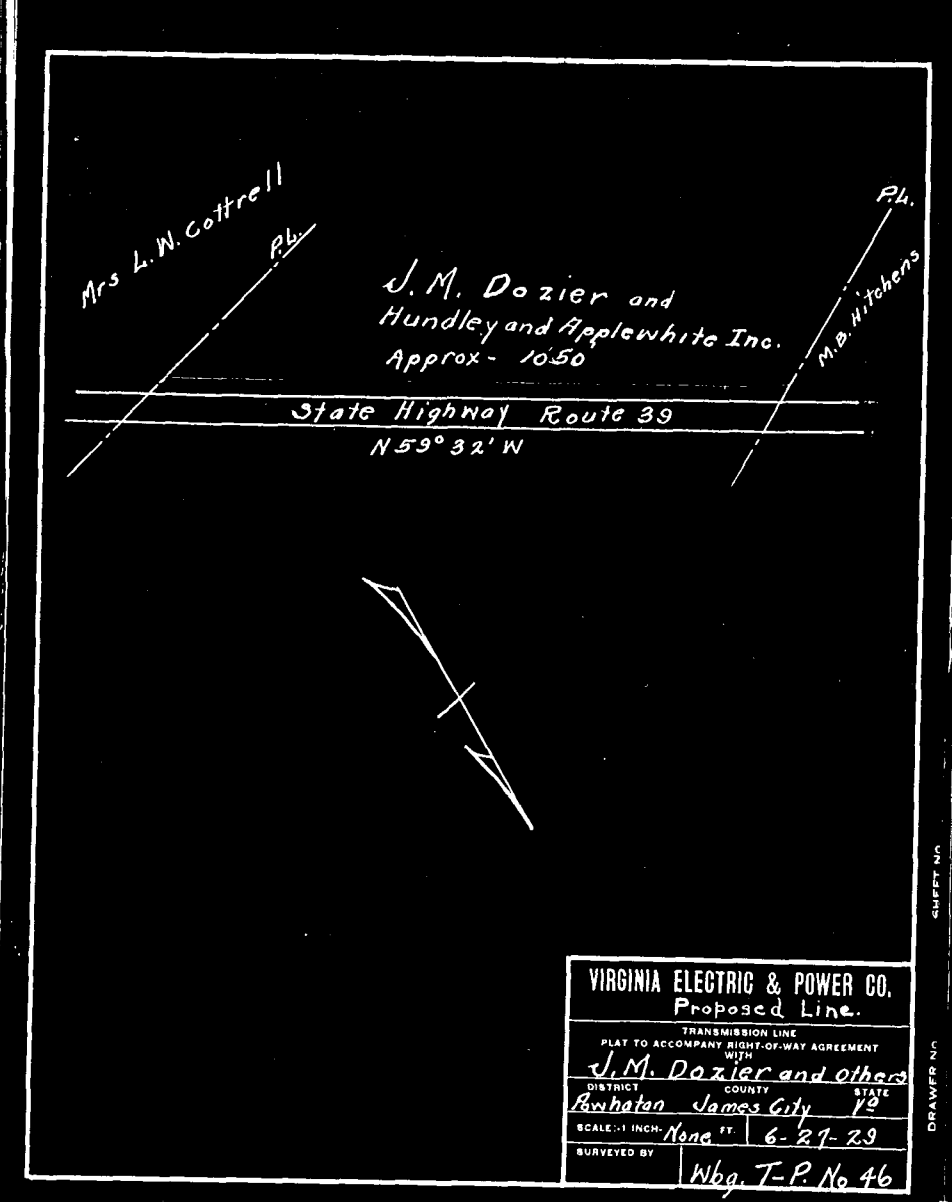
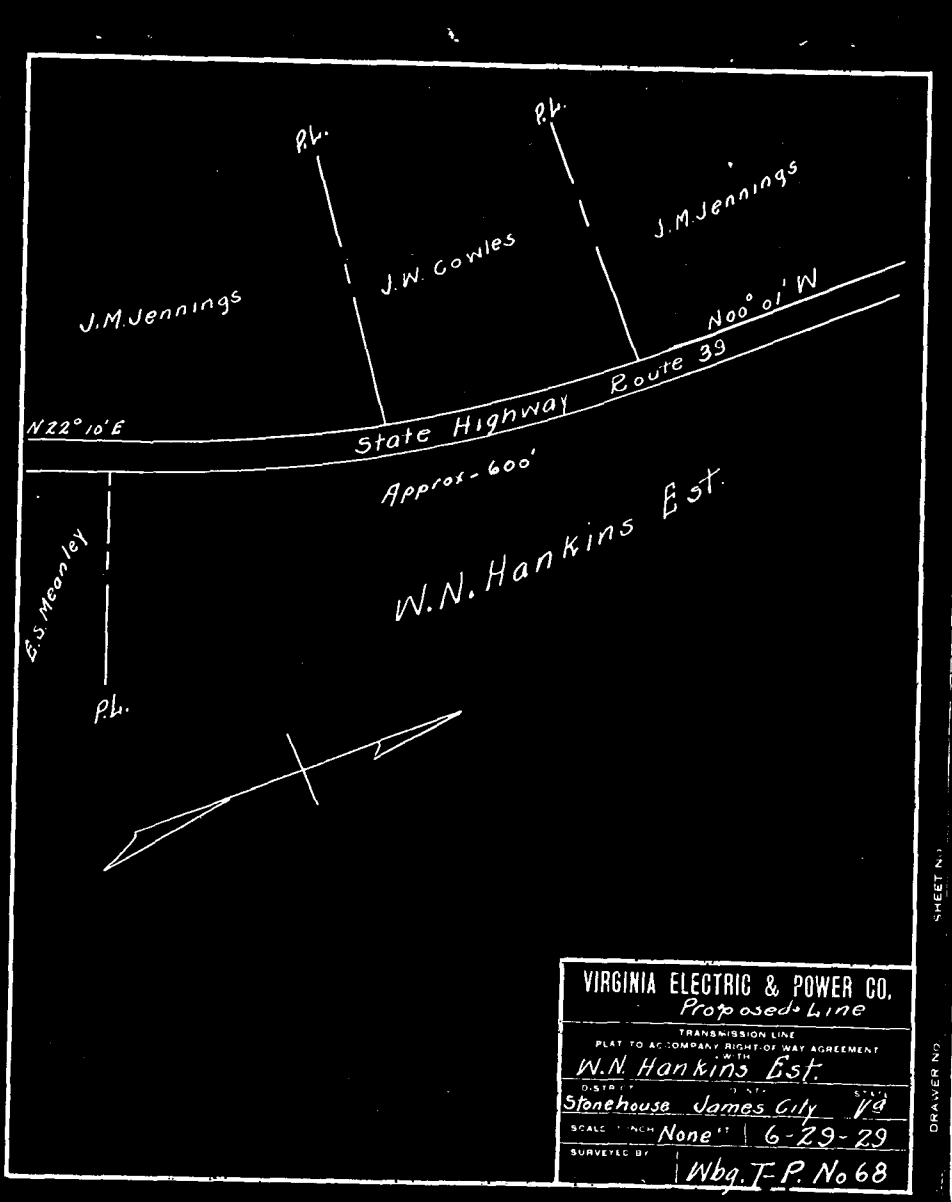


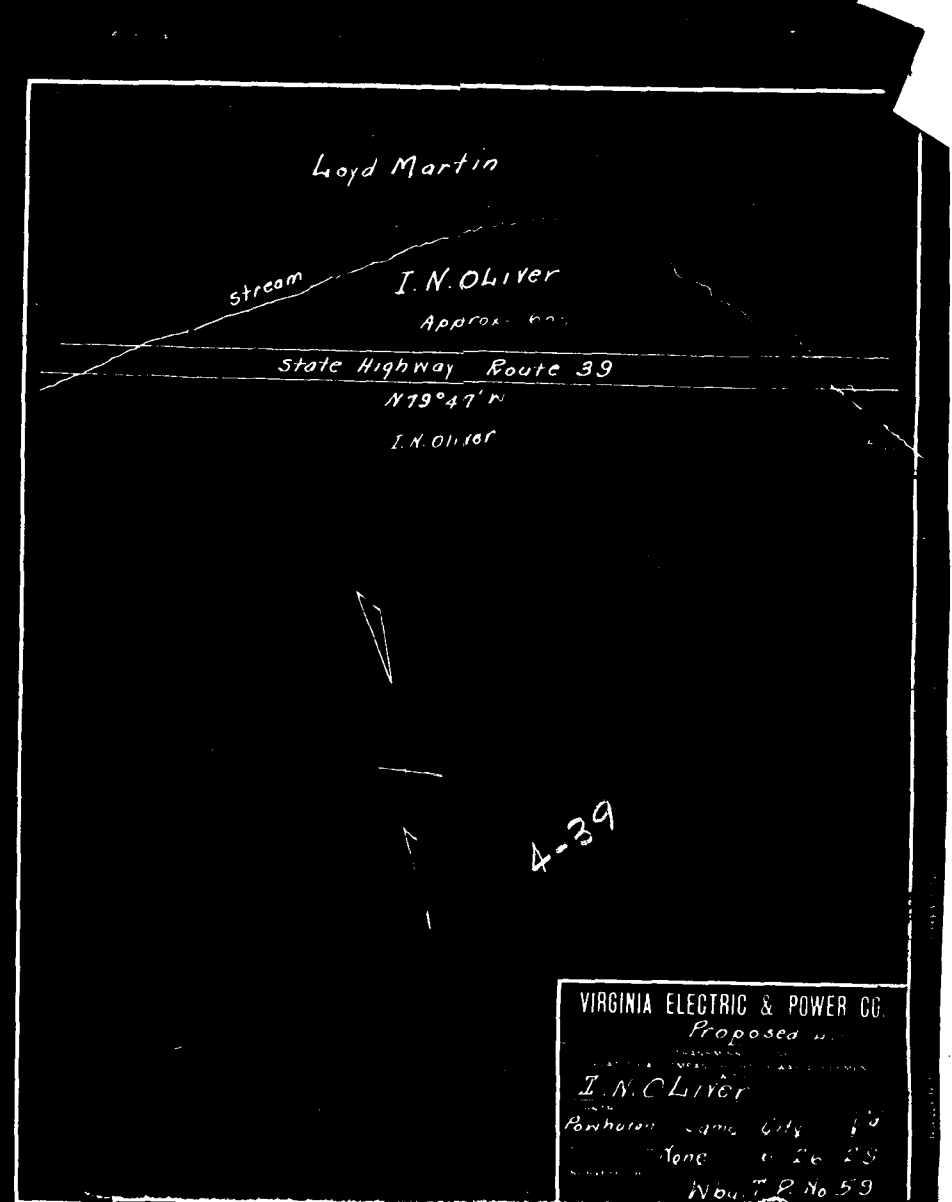
VIRGINIA ELECTRIC & POWER CO.
Proposed Line
TRANSMISSION LINE
PLAT TO ACCOMPANY RIGHT-OF-WAY AGREEMENT
WITH
Mathe P Gedy
DISTRICT COUNTY STATE
Pamhatan James City Va
SCALE: 1 INCH = None FT 6-25-29
SURVEYED BY: Wbg. T.P. No. 64



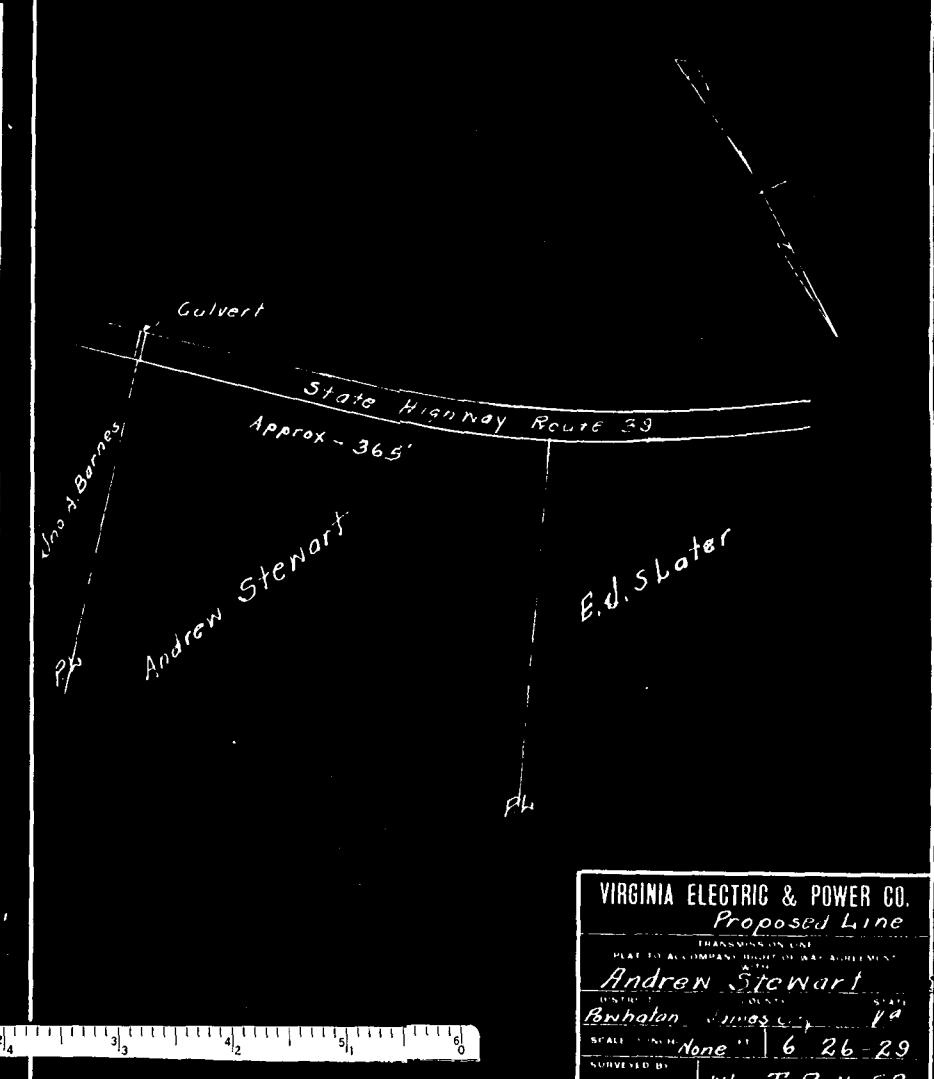
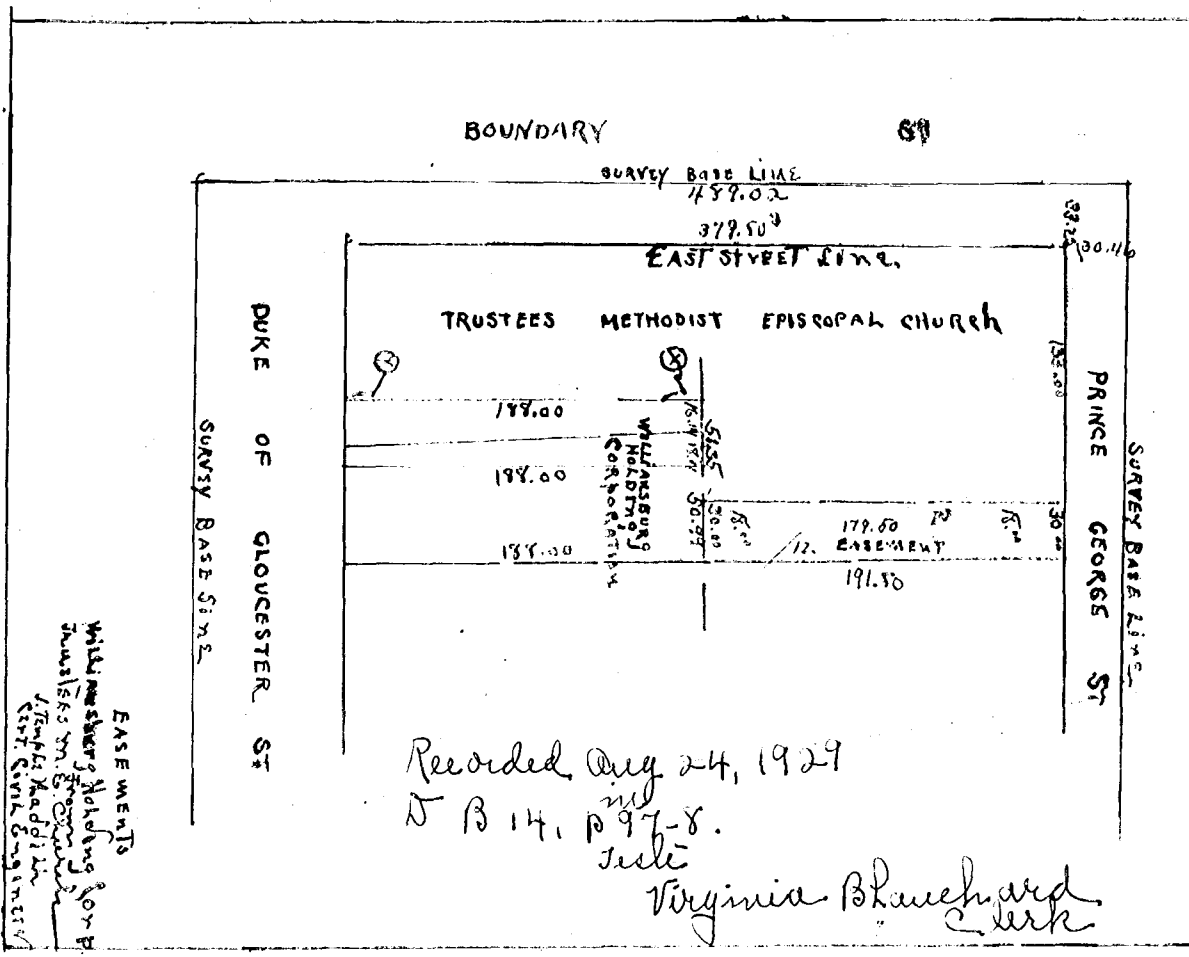
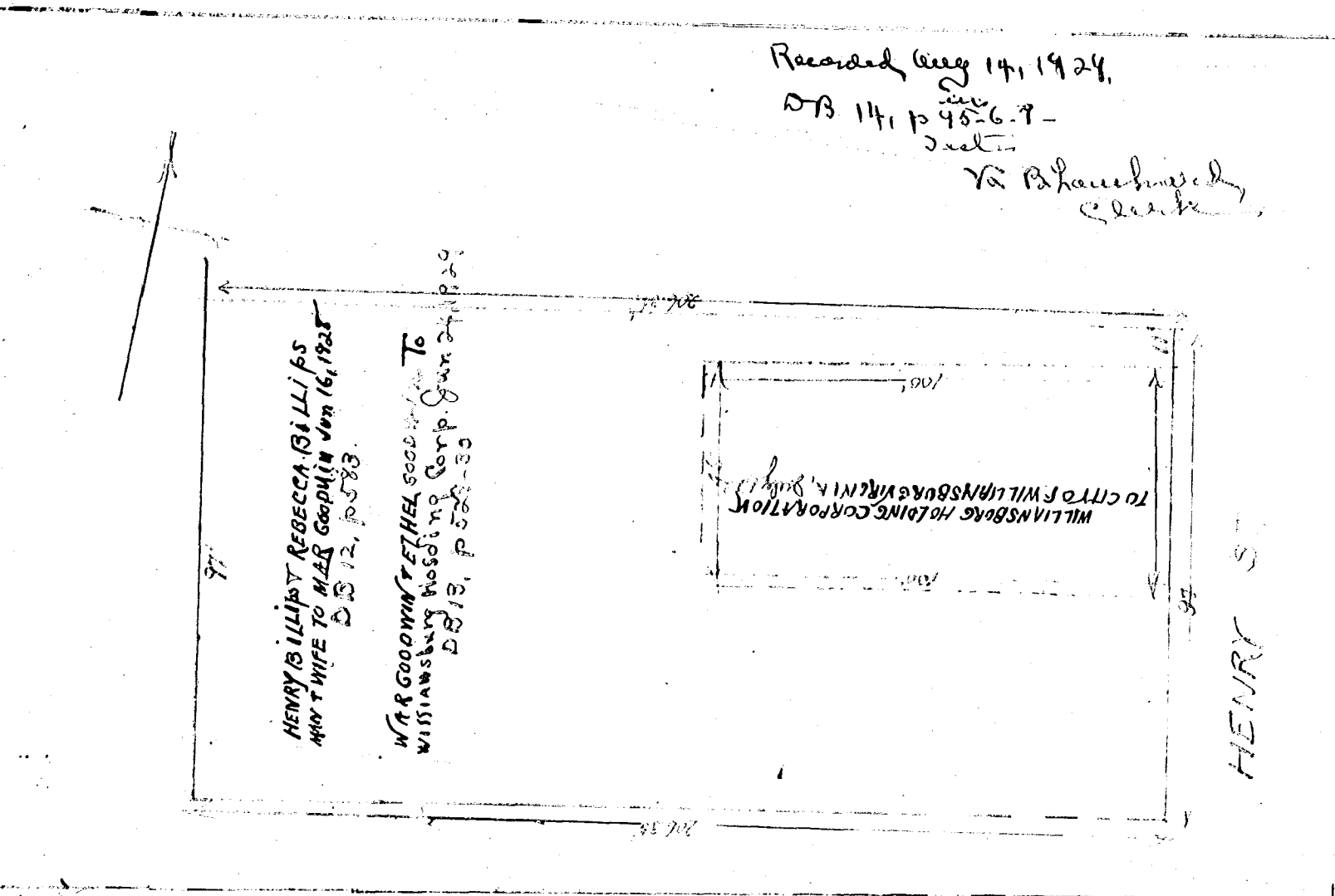
VIRGINIA ELECTRIC & POWER CO.
Proposed Line.
TRANSMISSION LINE
PLAT TO ACCOMPANY RIGHT-OF-WAY AGREEMENT
WITH
J.M. Dozier and others
DISTRICT COUNTY STATE
Pamhatan James City Va
SCALE: 1 INCH = None FT 6-27-29
SURVEYED BY: Wbg. T.P. No. 46



VIRGINIA ELECTRIC & POWER CO.
Proposed Line.
TRANSMISSION LINE
PLAT TO ACCOMPANY RIGHT-OF-WAY AGREEMENT
WITH
W.N. Hankins Est.
DISTRICT COUNTY STATE
Stonehouse James City Va
SCALE: 1 INCH = None FT 6-29-29
SURVEYED BY: Wbg. T.P. No. 68



VIRGINIA ELECTRIC & POWER CO.
Proposed Line
TRANSMISSION LINE
PLAT TO ACCOMPANY RIGHT-OF-WAY AGREEMENT
WITH
I.N. Oliver
DISTRICT COUNTY STATE
Pamhatan James City Va
SCALE: 1 INCH = None FT 6-26-29
SURVEYED BY: Wbg. T.P. No. 59



VIRGINIA ELECTRIC & POWER CO.
Proposed Line
TRANSMISSION LINE
PLAT TO ACCOMPANY RIGHT-OF-WAY AGREEMENT
WITH
Andrew Stewart
DISTRICT COUNTY STATE
Pamhatan James City Va
SCALE: 1 INCH = None FT 6-26-29
SURVEYED BY: Wbg. T.P. No. 52