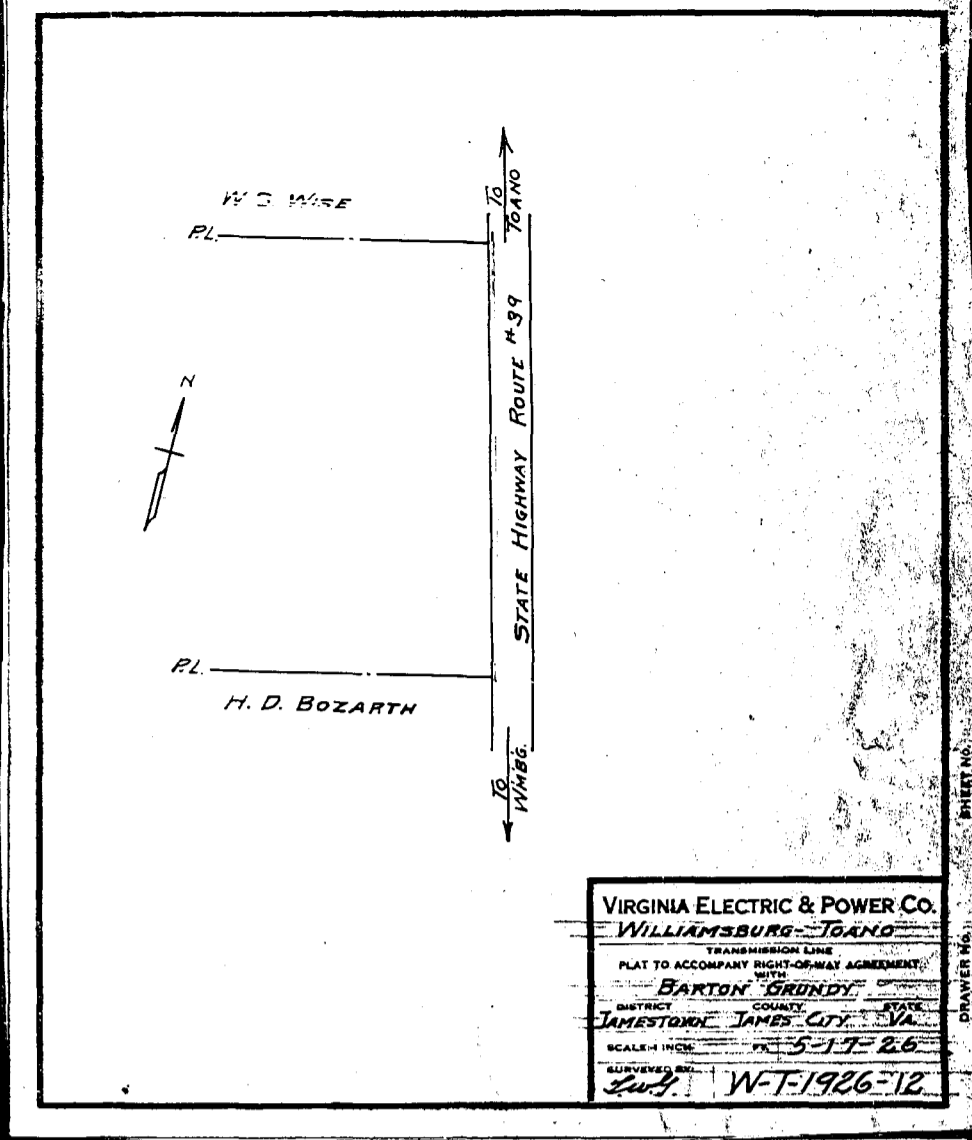
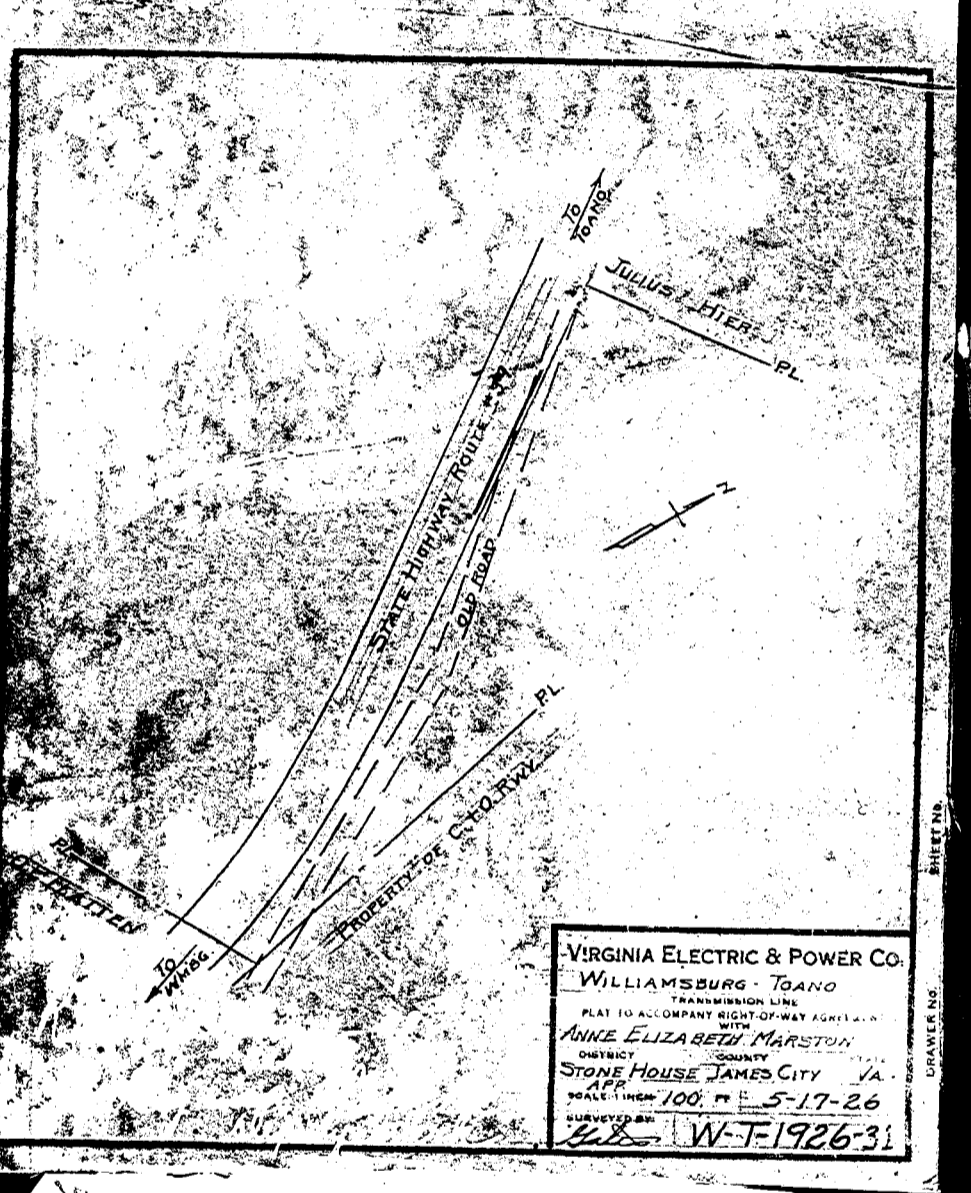


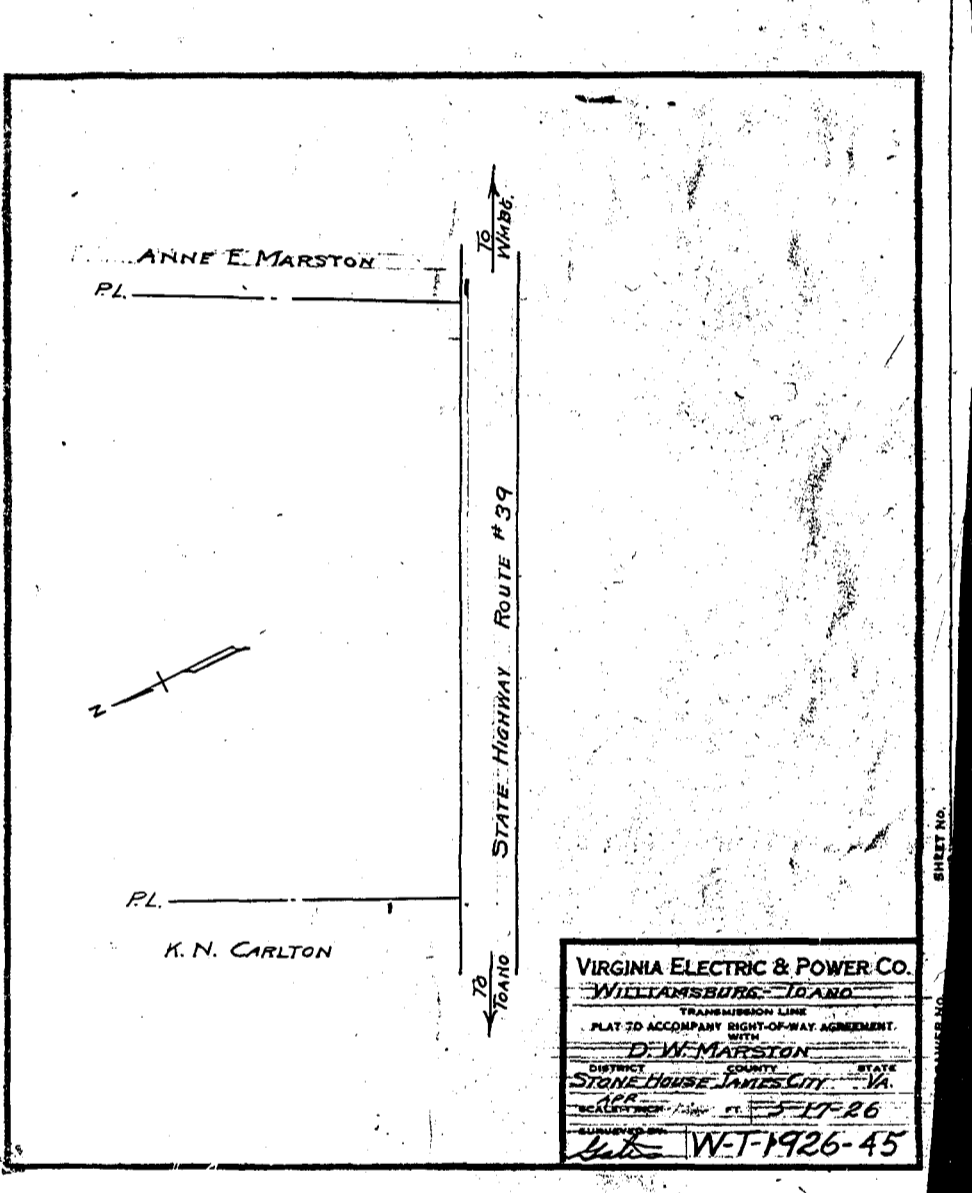
VIRGINIA ELECTRIC & POWER CO.
 WILLIAMSBURG - TOANO
 TRANSMISSION LINE
 PLAT TO ACCOMPANY RIGHT-OF-WAY AGREEMENT
 WITH
 D. W. MARSTON
 DISTRICT COUNTY STATE
 JAMESTOWN JAMES CITY VA.
 SCALE: 1 INCH = 5-17-26
 SURVEYED BY: *Sub* W-T-1926-19



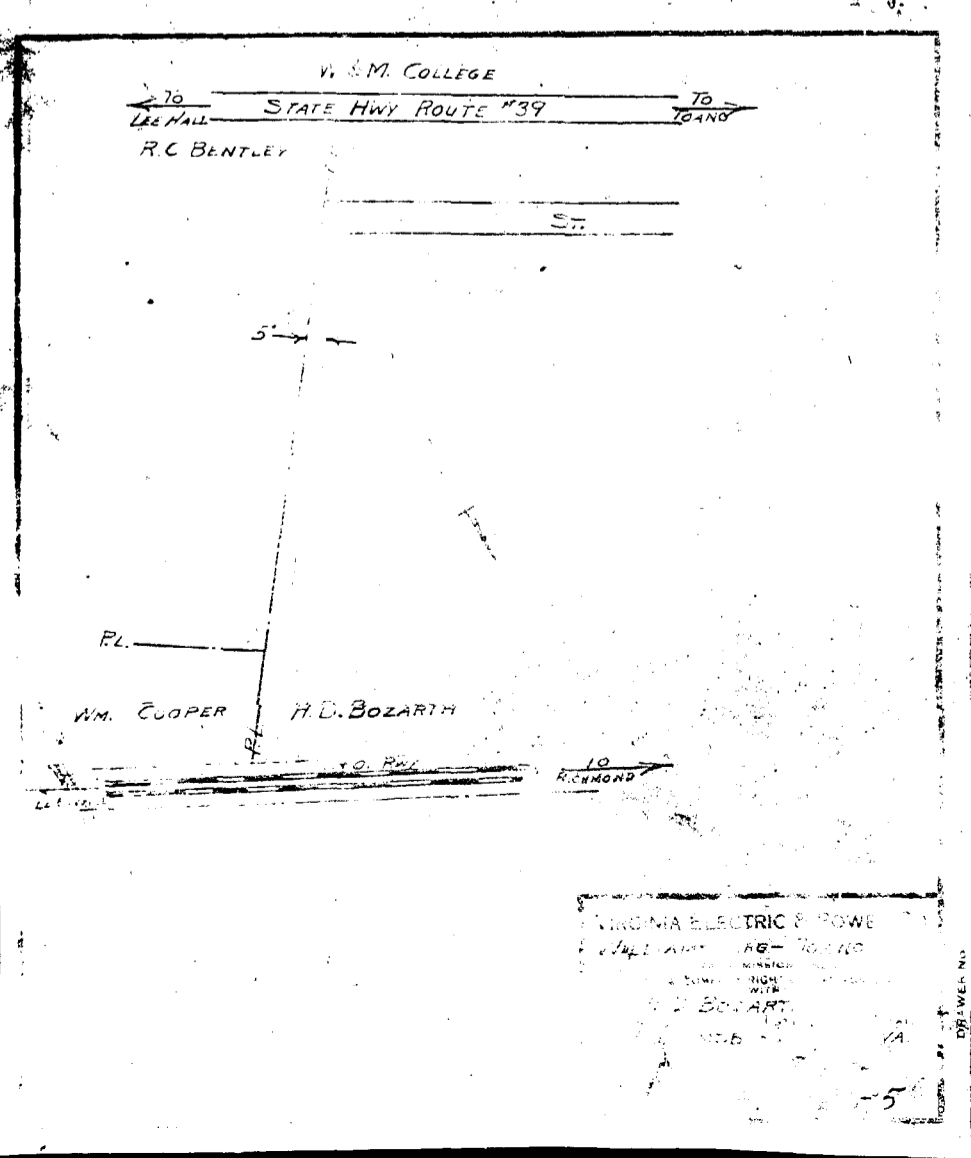
VIRGINIA ELECTRIC & POWER CO.
 WILLIAMSBURG - TOANO
 TRANSMISSION LINE
 PLAT TO ACCOMPANY RIGHT-OF-WAY AGREEMENT
 WITH
 BARTON GRUNDY
 DISTRICT COUNTY STATE
 JAMESTOWN JAMES CITY VA.
 SCALE: 1 INCH = 5-17-26
 SURVEYED BY: *Sub* W-T-1926-12



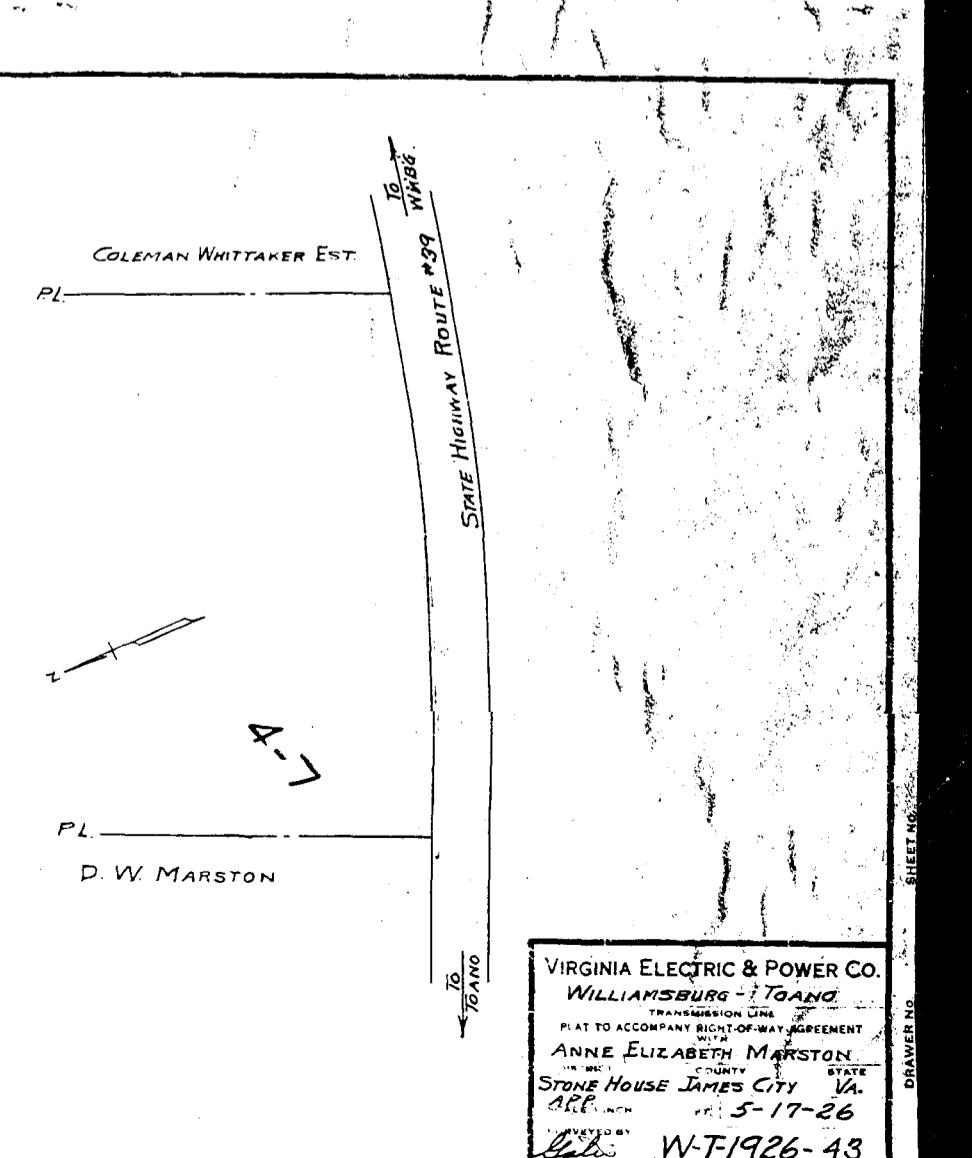
VIRGINIA ELECTRIC & POWER CO.
 WILLIAMSBURG - TOANO
 TRANSMISSION LINE
 PLAT TO ACCOMPANY RIGHT-OF-WAY AGREEMENT
 WITH
 ANNE ELIZABETH MARSTON
 DISTRICT COUNTY STATE
 STONE HOUSE JAMES CITY VA.
 SCALE: 1 INCH = 100 FT 5-17-26
 SURVEYED BY: *Sub* W-T-1926-31



VIRGINIA ELECTRIC & POWER CO.
 WILLIAMSBURG - TOANO
 TRANSMISSION LINE
 PLAT TO ACCOMPANY RIGHT-OF-WAY AGREEMENT
 WITH
 D. W. MARSTON
 DISTRICT COUNTY STATE
 STONE HOUSE JAMES CITY VA.
 SCALE: 1 INCH = 5-17-26
 SURVEYED BY: *Sub* W-T-1926-45



VIRGINIA ELECTRIC & POWER CO.
 WILLIAMSBURG - TOANO
 TRANSMISSION LINE
 PLAT TO ACCOMPANY RIGHT-OF-WAY AGREEMENT
 WITH
 H. D. BOZARTH
 DISTRICT COUNTY STATE
 STONE HOUSE JAMES CITY VA.
 SCALE: 1 INCH = 5-17-26
 SURVEYED BY: *Sub* W-T-1926-35



VIRGINIA ELECTRIC & POWER CO.
 WILLIAMSBURG - TOANO
 TRANSMISSION LINE
 PLAT TO ACCOMPANY RIGHT-OF-WAY AGREEMENT
 WITH
 ANNE ELIZABETH MARSTON
 DISTRICT COUNTY STATE
 STONE HOUSE JAMES CITY VA.
 SCALE: 1 INCH = 5-17-26
 SURVEYED BY: *Sub* W-T-1926-43