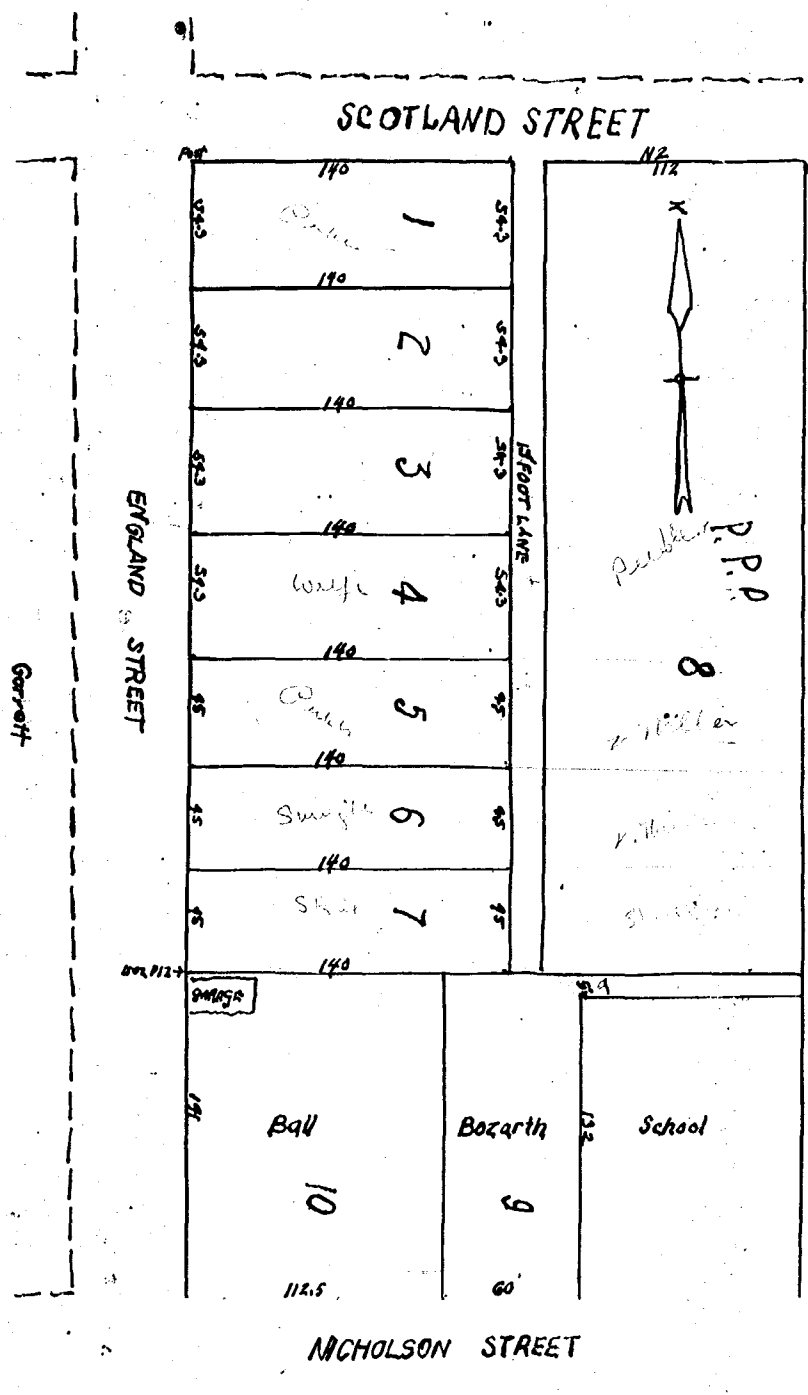


PLAT OF THE WILLIAMSBURG INCORPORATED

SCALE 1 INCH = 50 FEET.

Note. Iron pin is 2.5 feet North of Garage.



The foregoing subdivision of lot of land in the City of Williamsburg, Virginia, as appears in this plat, is planned and subdivided with the free consent and in accordance with the desires of the owners and proprietors, and the City of Williamsburg is hereby authorized to allow for the use of the property shown in this plat as an alley for the use of the property shown.

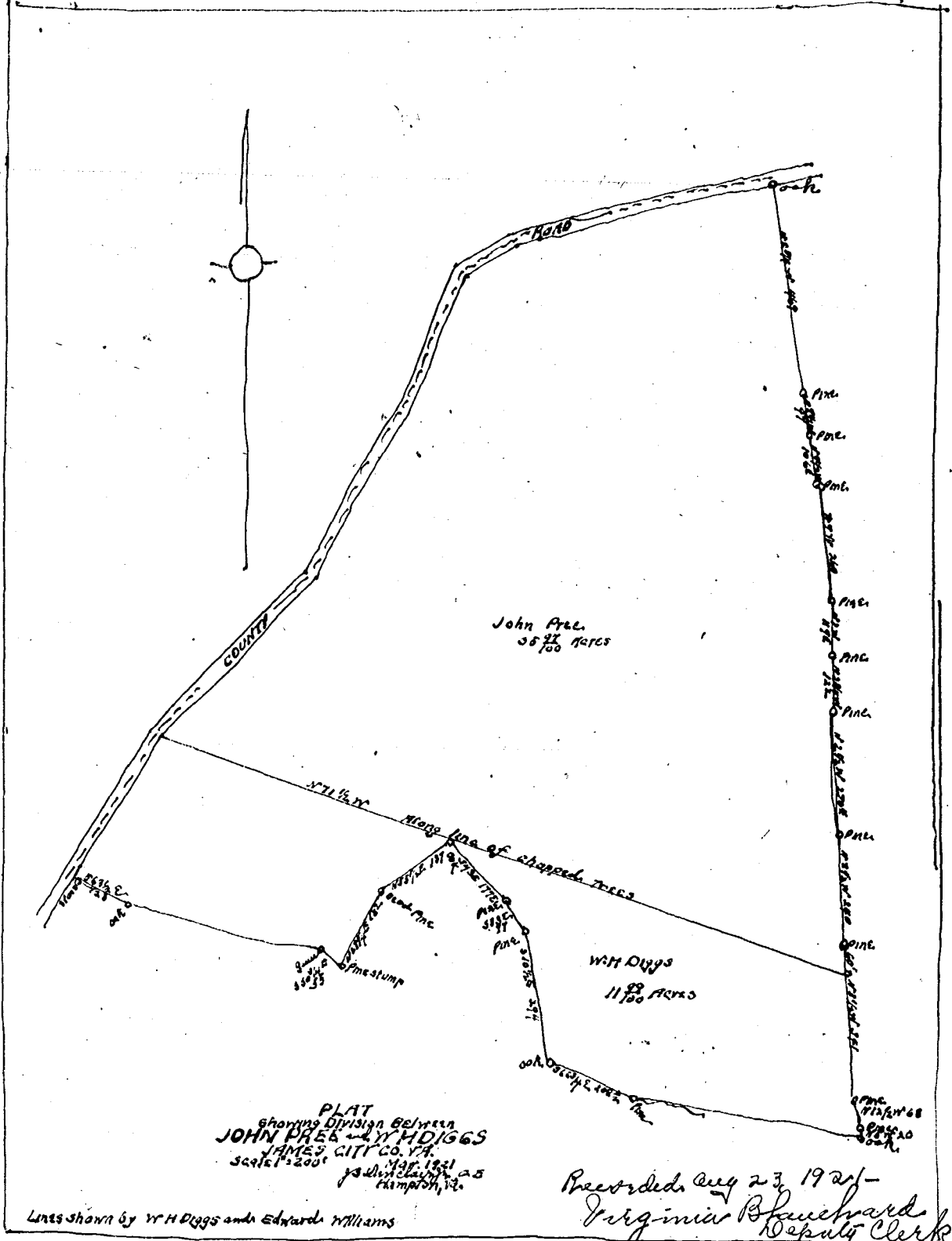
IN TESTIMONY WHEREOF, THE WILLIAMSBURG, INC. HAS CAUSED THIS PLAT TO BE DRAWN AND SUBMITTED IN THE presence and to the President and two officers of said City.

WILLIAMSBURG, VIRGINIA, JULY 19, 1921.
L. L. BARNETT

ATTEST:
Frank Armstrong, Mayor
Frank Armstrong, Secretary

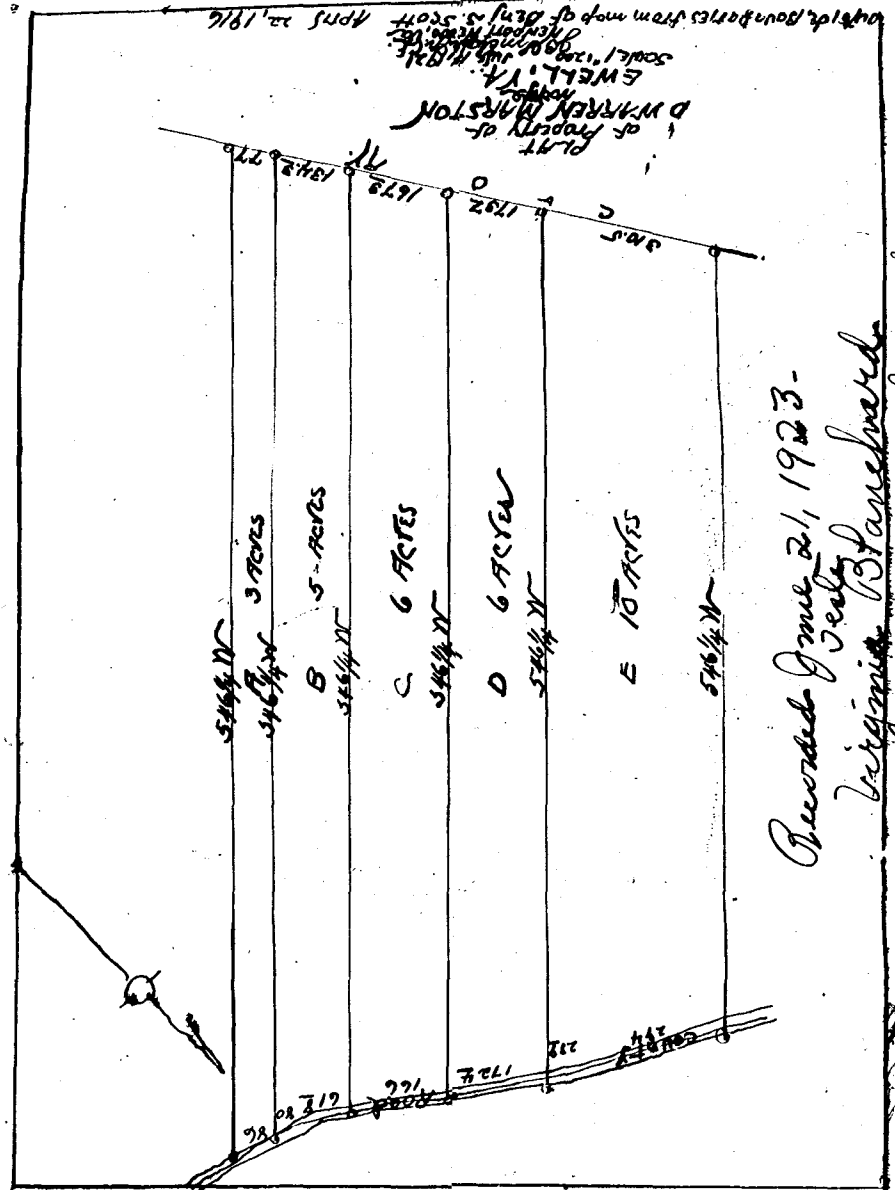
THE CITY OF WILLIAMSBURG, VIRGINIA, DO HEREBY CERTIFY THAT THE FOREGOING PLAT IS A TRUE AND CORRECT COPY OF THE ORIGINAL PLAT AS FILED IN THE OFFICE OF THE CITY CLERK OF SAID CITY, AND THAT THE SAME IS IN ACCORDANCE WITH THE ORDINANCES OF SAID CITY.

Recorded Aug 9, 1921.
A Copy - Teste
Virginia Blanchard
Deputy Clerk



PLAT showing Division Between JOHN AREL and W.H. DUGGS JAMES CITY CO. VA. Scale 1" = 200'

Recorded Aug 23, 1921 -
Virginia Blanchard
Deputy Clerk



Recorded June 21, 1923 -
Virginia Blanchard
Deputy Clerk

