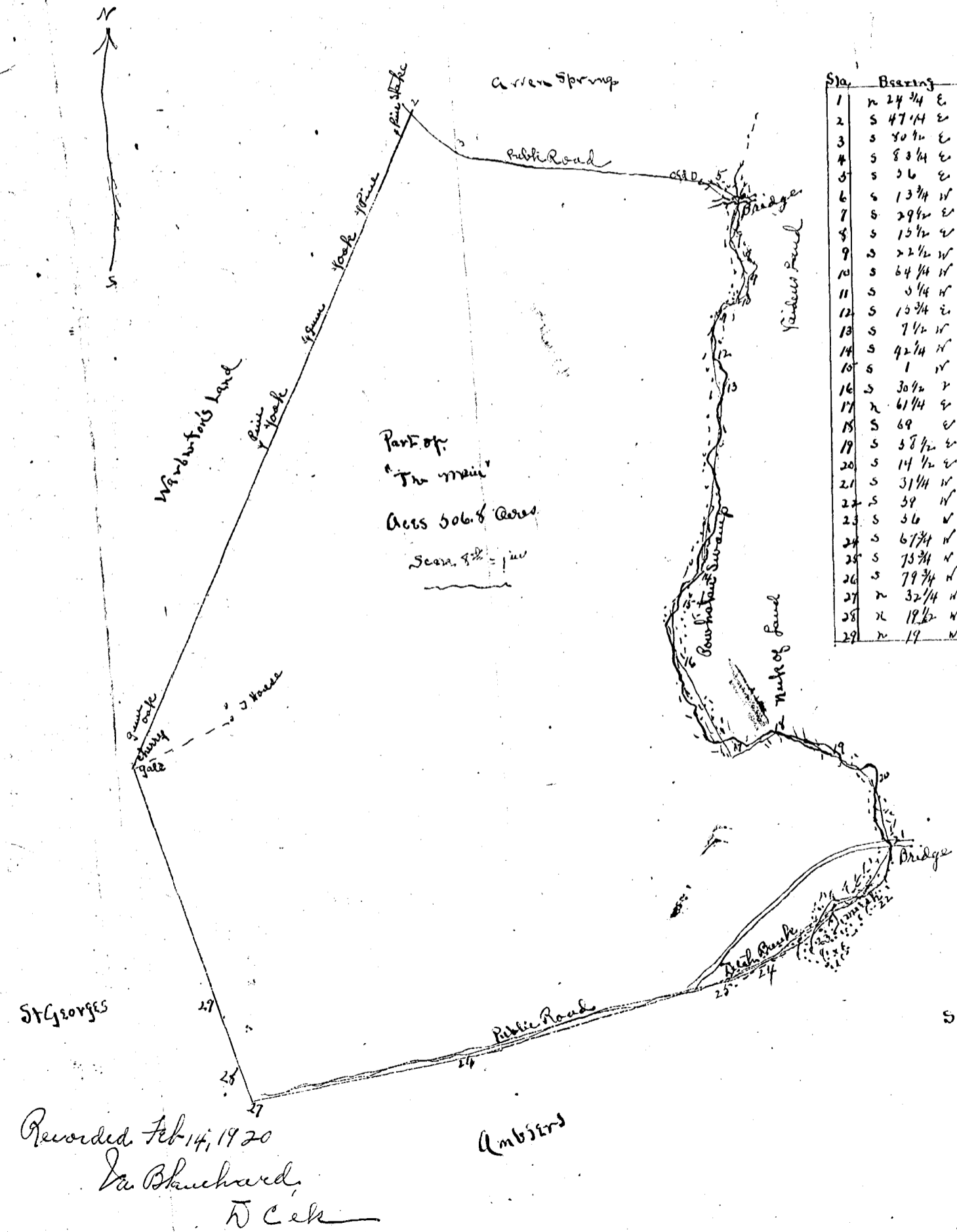


BEGIN BOOK 3

CH



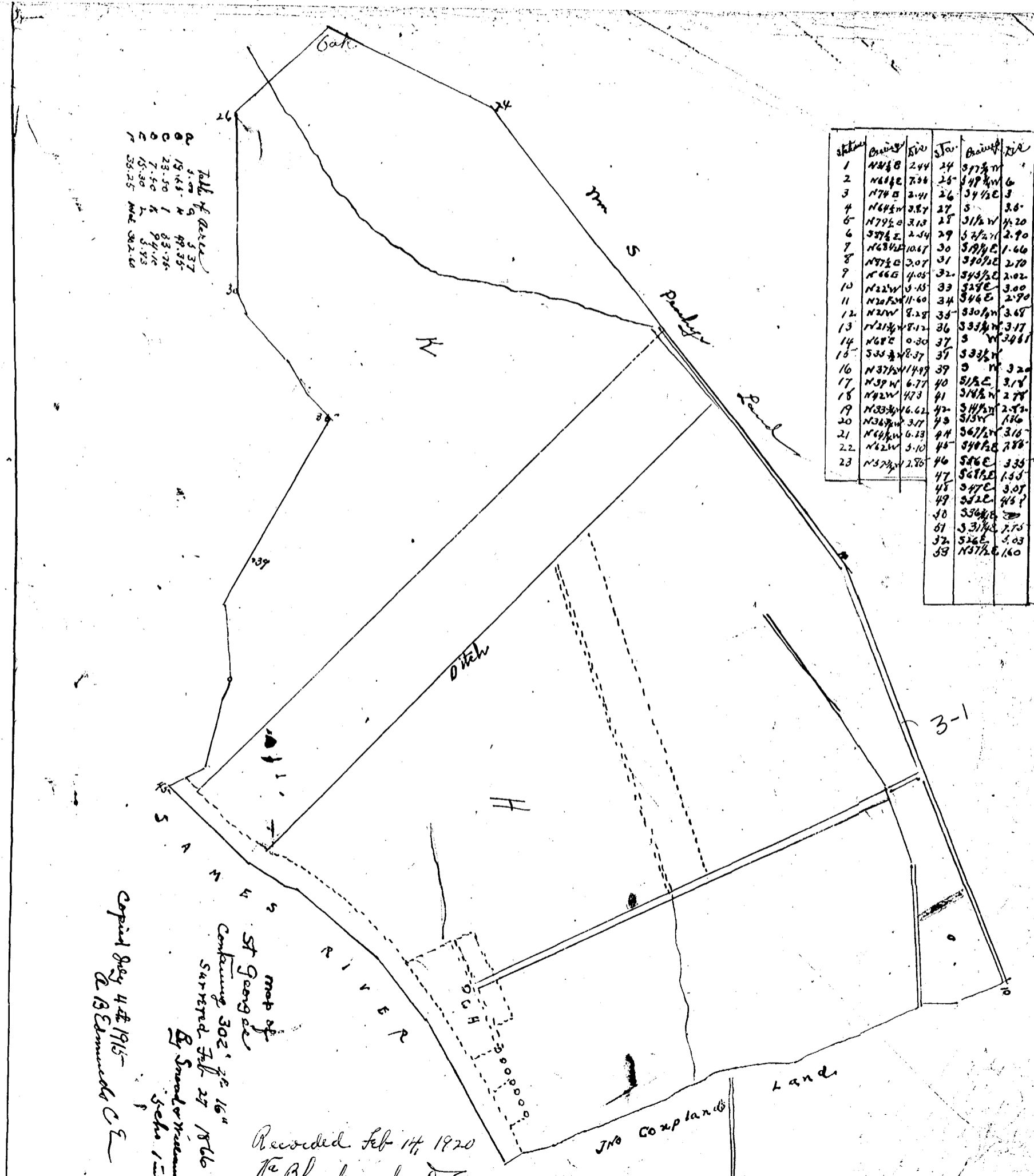
| Sta | Bearing | Dist |
|-----|------------|-------|
| 1 | N 24 3/4 E | 74.90 |
| 2 | S 47 1/4 E | 6.46 |
| 3 | S 80 3/4 E | 6.64 |
| 4 | S 83 1/4 E | 21.05 |
| 5 | S 36 E | 3.32 |
| 6 | S 13 1/4 W | 4.14 |
| 7 | S 29 1/2 W | 2.05 |
| 8 | S 15 1/2 W | 2.19 |
| 9 | S 22 1/2 W | 2.58 |
| 10 | S 64 1/4 W | 2.84 |
| 11 | S 5 1/4 W | 4.40 |
| 12 | S 10 3/4 E | 3.96 |
| 13 | S 7 1/2 W | 8.82 |
| 14 | S 42 1/4 W | 4.41 |
| 15 | S 1 W | 6.10 |
| 16 | S 30 1/2 W | 11.90 |
| 17 | N 61 1/4 E | 5.28 |
| 18 | S 69 E | 6.38 |
| 19 | S 58 1/2 E | 4.65 |
| 20 | S 14 1/2 E | 7.35 |
| 21 | S 31 1/4 W | 5.76 |
| 22 | S 59 W | 6.66 |
| 23 | S 36 W | 7.18 |
| 24 | S 67 1/4 W | 4.55 |
| 25 | S 75 3/4 W | 21.29 |
| 26 | S 79 3/4 W | 12.34 |
| 27 | N 32 1/4 W | 3.10 |
| 28 | N 18 1/2 W | 7.74 |
| 29 | N 19 W | 26.24 |

a map of part of The main Back situated in James City Co, Virginia surveyed for Chapman By Ben S. Scott, Surveyor April 1906

Recorded Feb 14, 1920
 W. Blanchard,
 T. C. C.

Table of Area

| | |
|-------|-------|
| 19.43 | 49.35 |
| 23.50 | 83.76 |
| 7.50 | 57.16 |
| 15.30 | 35.33 |
| 35.25 | 82.20 |



| Sta | Bearing | Dist | Sta | Bearing | Dist |
|-----|------------|-------|-----|------------|------|
| 1 | N 44 E | 2.44 | 24 | S 77 1/2 W | 1.6 |
| 2 | N 44 E | 7.88 | 25 | S 49 1/2 W | 6 |
| 3 | N 70 E | 2.41 | 26 | S 49 1/2 E | 3 |
| 4 | N 68 W | 3.87 | 27 | S | 3.0 |
| 5 | N 77 1/2 E | 3.13 | 28 | S 1/2 W | 1.20 |
| 6 | S 77 1/2 E | 2.54 | 29 | S 1/2 W | 2.70 |
| 7 | N 63 1/2 W | 10.67 | 30 | S 77 1/2 E | 1.66 |
| 8 | N 77 1/2 E | 2.07 | 31 | S 77 1/2 E | 2.70 |
| 9 | N 66 E | 4.05 | 32 | S 77 1/2 E | 2.02 |
| 10 | N 22 W | 5.45 | 33 | S 77 E | 3.00 |
| 11 | N 22 W | 11.60 | 34 | S 77 E | 2.70 |
| 12 | N 22 W | 8.28 | 35 | S 77 W | 3.48 |
| 13 | N 21 1/4 W | 8.12 | 36 | S 77 1/2 W | 3.17 |
| 14 | N 67 E | 0.30 | 37 | S | 3.41 |
| 15 | S 55 1/2 W | 8.37 | 37 | S 33 1/2 W | |
| 16 | N 37 1/2 W | 14.89 | 39 | S | 3.20 |
| 17 | N 39 W | 6.77 | 40 | S 1/2 E | 3.18 |
| 18 | N 42 W | 4.73 | 41 | S 1/2 E | 2.78 |
| 19 | N 33 1/2 W | 16.62 | 42 | S 44 1/2 W | 2.52 |
| 20 | N 33 1/2 W | 3.77 | 43 | S 35 W | 1.60 |
| 21 | N 44 W | 0.83 | 44 | S 67 1/2 E | 3.16 |
| 22 | N 42 W | 3.10 | 45 | S 77 1/2 E | 2.78 |
| 23 | N 37 1/2 W | 2.70 | 46 | S 77 E | 3.35 |
| | | | 47 | S 77 E | 1.53 |
| | | | 48 | S 77 E | 3.05 |
| | | | 49 | S 77 E | 4.65 |
| | | | 50 | S 77 E | |
| | | | 51 | S 33 1/2 E | 2.75 |
| | | | 52 | S 77 E | 5.03 |
| | | | 53 | N 77 1/2 E | 1.60 |

Copy of map of St Georges containing 302' 1/2" 16" surveyed Feb 27 1866 By S. S. Scott & B. Edwards C.E.

Recorded Feb 14, 1920
 W. Blanchard, D.C.

