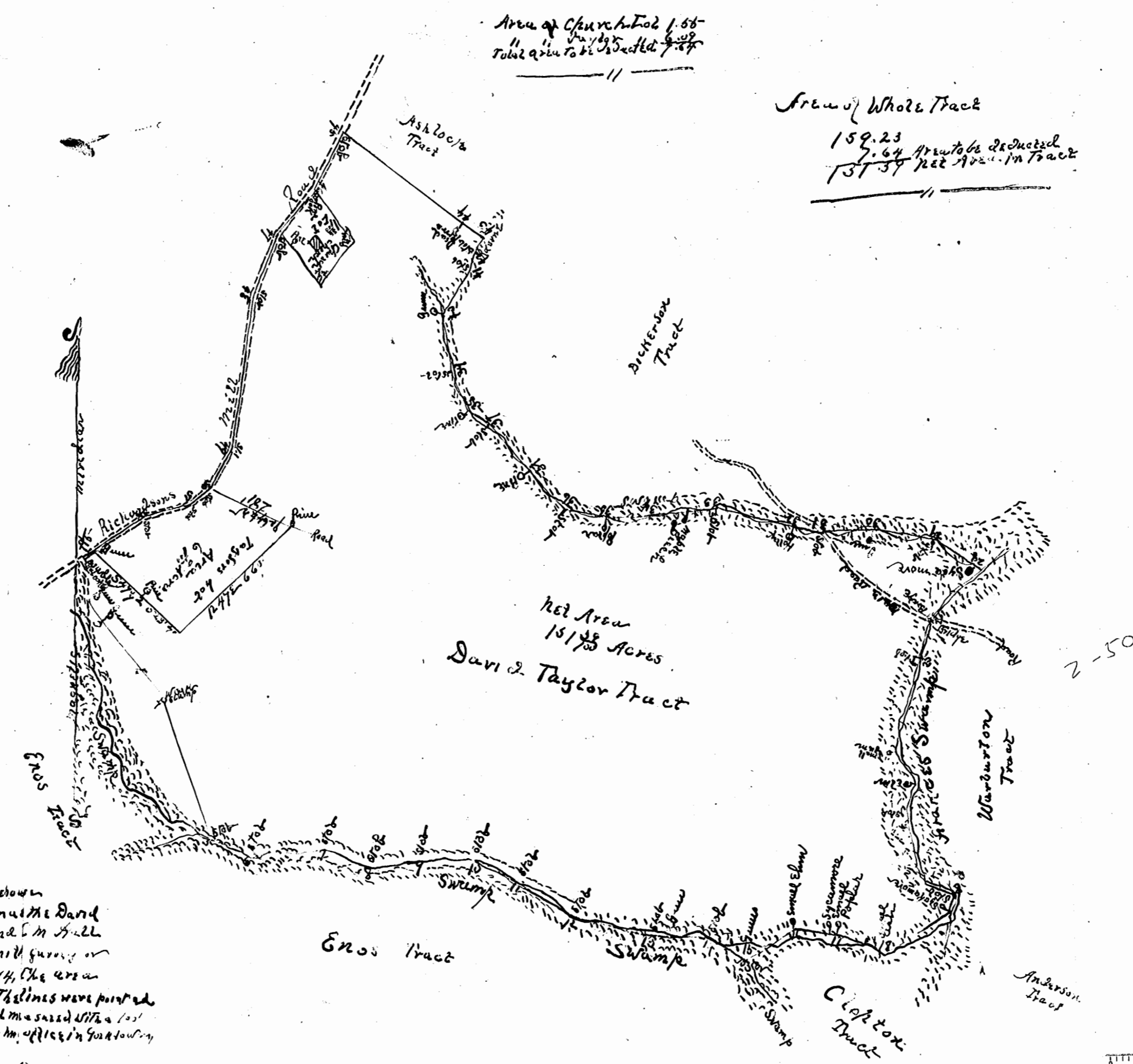


Sta	Bear	Dist.	Rem
1	S 17 1/2 E	113.8	...
2	S 34 1/2 E	109.7	...
3	S 59 1/2 E	53.1	...
4	S 17 1/2 E	63.6	...
5	S 66 E	178.1	...
6	N 84 E	330.6	...
7	S 66 1/2 E	22.3	...
8	N 84 1/2 E	221.8	...
9	S 57 E	240.5	...
10	S 66 E	206.2	...
11	S 58 1/2 E	283.4	...
12	S 77 1/2 E	358.1	...
13	S 87 E	203.1	...
14	S 88 E	89.1	...
15	N 57 1/2 E	24.5	...
16	S 84 E	186	...
17	S 71 E	237	...
18	N 57 1/2 E	320.2	...
19	N 11 E	74.1	...
20	N 27 1/2 W	122	...
21	N 17 1/2 W	312.2	...
22	N 28 1/2 E	133.1	...
23	N 23 1/2 E	160.8	...
24	N 16 E	88.5	...
25	N 11 1/2 E	172.1	...
26	N 33 E	64.1	...
27	N 49 E	23.1	...
28	N 38 1/2 W	232.8	...
29	N 81 1/2 W	273.5	...
30	S 86 1/2 W	234.1	...
31	N 79 1/2 W	72.1	...
32	N 77 W	34.8	...
33	S 83 1/2 W	291.1	...
34	S 55 1/2 W	195.4	...
35	N 77 1/2 W	183.2	...
36	N 49 1/2 W	302.4	...
37	N 56 1/2 W	104.5	...
38	N 24 1/2 W	81.0	...
39	N 14 W	24.8	...
40	N 31 1/2 E	226.2	...
41	N 16 1/2 E	72	...
42	N 31 1/2 E	76.4	...
43	N 27 1/2 W	118.6	...
44	N 54 1/2 W	64.1	...
45	S 26 1/2 W	27.3	...
46	S 35 1/2 W	237.3	...
47	S 22 W	265.1	...
48	S 84 W	674.2	...
49	S 28 1/2 W	19.4	...
50	S 57 W	107	...
51	S 75 1/2 W	210.4	...
52	S 57 W	346.9	...

Scale
264 Feet = one inch



A plat of a tract of land, situated in Stonehouse District, James City County, Virginia, known as the David Taylor Tract now owned by W. A. Porter and E. M. Hill. Surveyed for the owners by Sydney Smith surveyor in York County, April 27th, 28th & 29th 1714, the area and field notes are given on this plat. The lines were pointed out by Mr. N. W. Jennings of Towns, Va and measured with a 100' steel tape - Given under my hand, at my office in York County, this the 4th day of May 1714

Sydney Smith
S. G. C.

Entered July 16, 1917.

Poster

The Bluncknerd, D.C.

See B B 17. page 95

