

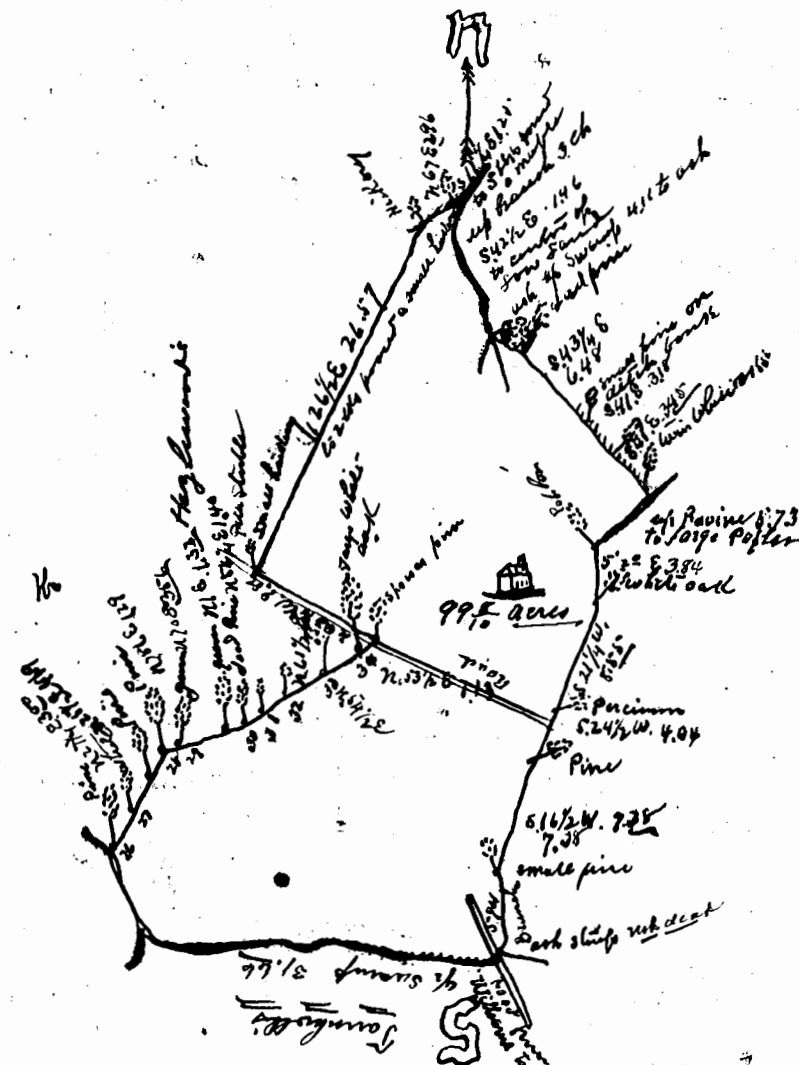
Map of 108 Acres  
 of Part of  
 Bailey  
 Sold To  
 S R Gurtis  
 May 20<sup>th</sup> 1912

Scale 400' = 1"

A. Wapner  
 Engineer

A copy test

*J. H. Gentry* Clerk



May, 1918  
 At the request of Mr. Edward Williams, I surveyed this tract  
 of land on which he now resides in Stone House District  
 James City County, Va. and found the same to contain  
 99.5 acres, with bearings & distances as they appear  
 in the above plat.  
 O. H. Gentry, Surveyor

Entered on record, April, 29<sup>th</sup>, 1914. See  
 Deed Book K. 2214, page 381-2, for deed.

*J. H. Gentry* Clerk

2-25

