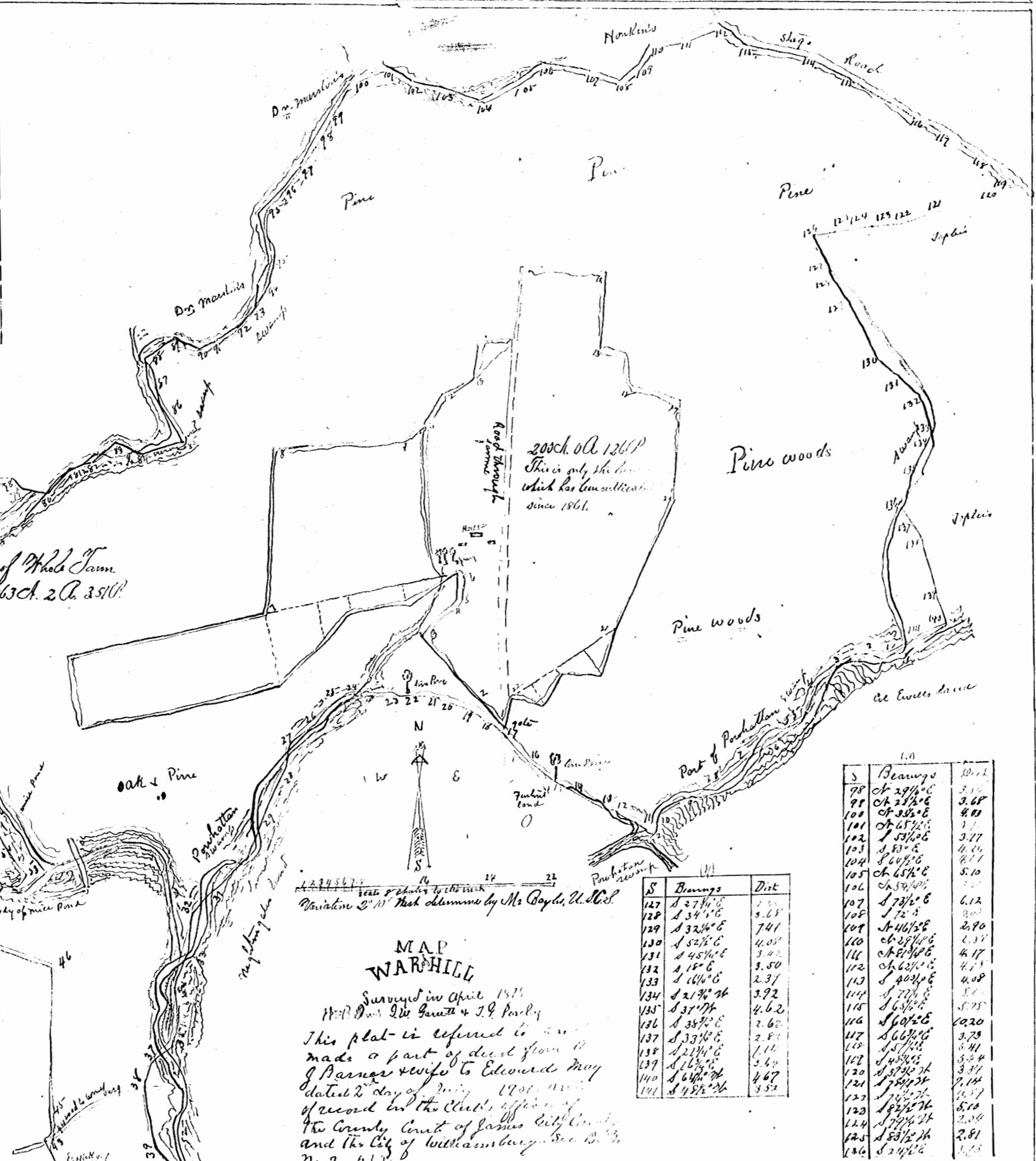
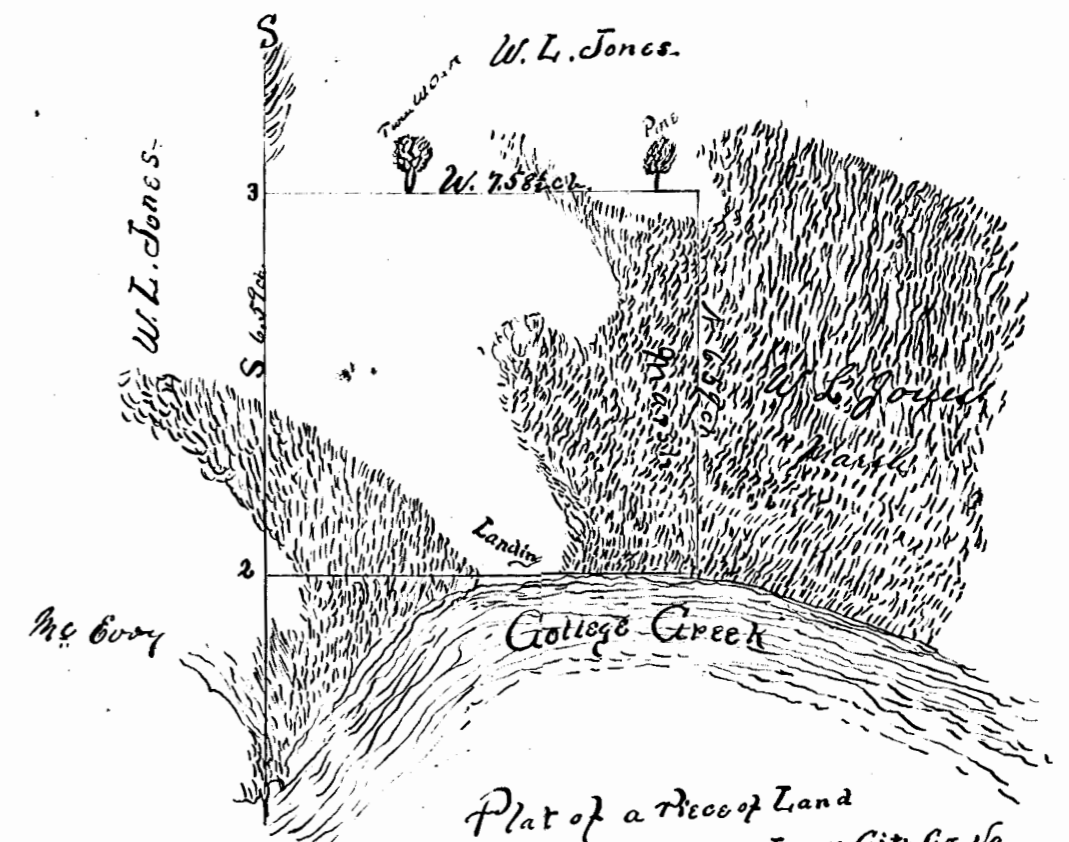


S	Bearings	Dist	S	Bearings	Dist
1	Ch 88° 58' N	3.75	73	S 72° 45' E	3.75
2	S 67° 30' W	3.75	74	S 87° 00' E	4.6
3	S 41° 30' W	3.75	75	S 44° 00' E	3.25
4	S 16° 30' W	4.77	76	S 8° 00' E	5.82
5	S 49° 30' W	3.53	77	Ch 87° 00' E	7.00
6	S 50° 30' W	4.21	78	S 40° 00' E	1.47
7	S 41° 30' W	4.71	79	S 80° 00' E	3.40
8	S 16° 30' W	4.08	80	Ch 53° 00' E	5.10
9	S 49° 30' W	4.08	81	Ch 88° 00' E	2.8
10	S 50° 30' W	2.17	82	Ch 52° 00' E	3.76
11	Ch 60° 00' W	4.31	83	S 72° 00' E	3.27
12	Ch 74° 00' W	2.19	84	Ch 77° 00' E	3.59
13	Ch 63° 00' W	3.59	85	Ch 27° 00' E	4.01
14	Ch 63° 00' W	2.70	86	Ch 33° 00' E	3.25
15	Ch 54° 00' W	4.01	87	Ch 84° 00' E	4.51
16	Ch 40° 00' W	4.21	88	S 64° 00' E	3.50
17	Ch 55° 00' W	3.06	89	Ch 77° 00' E	2.42
18	Ch 52° 00' W	2.58	90	Ch 46° 00' E	3.25
19	Ch 72° 00' W	2.77	91	Ch 90° 00' E	2.74
20	Ch 50° 00' W	2.58	92	Ch 35° 00' E	4.12
21	Ch 80° 00' W	3.06	93	Ch 60° 00' E	1.51
22	S 61° 30' W	2.36	94	Ch 41° 00' E	1.51
23	S 13° 30' W	4.37			
24	S 70° 30' W	3.61			
25	S 44° 30' W	3.30			
26	S 34° 30' W	8.77			
27	S 17° 30' W	4.25			
28	S 28° 30' W	5.83			
29	S 38° 30' W	5.10			
30	S 46° 30' W	6.27			
31	S 49° 30' W	3.36			
32	S 85° 30' W	4.85			
33	S 23° 30' W	4.41			
34	Bank	4.51			
35	S 30° 30' W	2.77			
36	S 49° 30' W	2.73			
37	S 21° 30' W	3.06			
38	S 71° 00' E	7.68			
39	S 72° 00' E	3.51			
40	S 10° 00' E	6.02			
41	Ch 16° 00' W	14.50			
42	Ch 21° 00' W	6.51			
43	Ch 60° 00' E	6.00			
44	Ch 71° 00' W	2.71			
45	Ch 30° 00' E	15.01			
46	Ch 67° 00' E	13.26			
47	Ch 44° 00' E	6.58			
48	Ch 87° 00' E	3.75			
49	Ch 20° 00' E	2.53			
50	Ch 75° 00' E	3.58			
51	S 70° 00' E	5.78			
52	S 66° 00' E	2.04			
53	Ch 47° 00' E	1.77			
54	Ch 34° 00' E	3.48			
55	Ch 27° 00' E	4.75			
56	Ch 31° 00' E	3.36			
57	Ch 54° 00' E	4.71			
58	Ch 44° 00' E	3.91			
59	Ch 71° 00' E	3.50			
60	Ch 59° 00' E	4.73			
61	Ch 36° 00' E	6.76			
62	Ch 49° 00' E	14.26			
63	Ch 27° 00' E	6.11			
64	Ch 22° 00' E	5.81			
65	Ch 15° 00' E	2.84			
66	Ch 33° 00' E	3.30			
67	Ch 14° 00' E	3.06			
68	Ch 64° 00' E	2.11			
69	Ch 15° 00' E	7.18			
70	Ch 35° 00' E	4.15			
71	Ch 67° 00' E	5.21			
72	S 72° 00' E	3.87			



S	Bearings	Dist
78	Ch 29° 00' E	3.15
79	Ch 25° 00' E	3.68
80	Ch 32° 00' E	4.01
81	Ch 37° 00' E	3.77
82	S 83° 00' E	4.04
83	S 64° 00' E	6.11
84	Ch 65° 00' E	5.10
85	Ch 59° 00' E	2.77
86	S 73° 00' E	6.12
87	S 72° 00' E	3.00
88	S 72° 00' E	2.90
89	Ch 46° 00' E	2.37
90	Ch 25° 00' E	4.17
91	Ch 81° 00' E	4.17
92	Ch 63° 00' E	4.08
93	S 40° 00' E	5.10
94	S 70° 00' E	5.10
95	S 65° 00' E	5.25
96	S 60° 00' E	10.20
97	S 66° 00' E	3.75
98	S 71° 00' E	3.41
99	S 45° 00' E	3.34
100	S 37° 00' E	3.31
101	S 74° 00' W	2.14
102	S 71° 00' W	1.57
103	S 74° 00' W	5.10
104	S 74° 00' W	2.04
105	S 83° 00' W	2.81
106	S 24° 00' E	1.51



Area  
A. R. P  
5.00

Scale  
Two Ch. to one inch

Plat of a Piece of Land  
 Situate on College Creek, James City Co. Va.  
 Being a part of the tract known as Deeks.

Sold by  
 W. L. Jones  
 to  
 Warburton & Bozarth

Surveyed by  
 Sydney Smith, Surveyor  
 Oct. 9<sup>th</sup> 1902

Revised Dec 6<sup>th</sup> 1902

(See 125.710's page 1447 for Deeds)

Teste  
 May 19<sup>th</sup> 1902,  
 J.H. Goldy, Clerk

