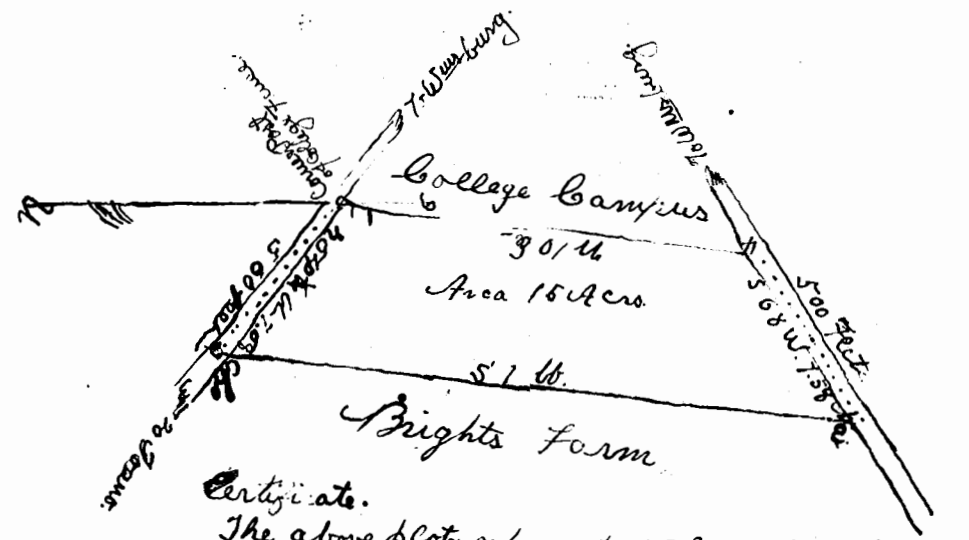
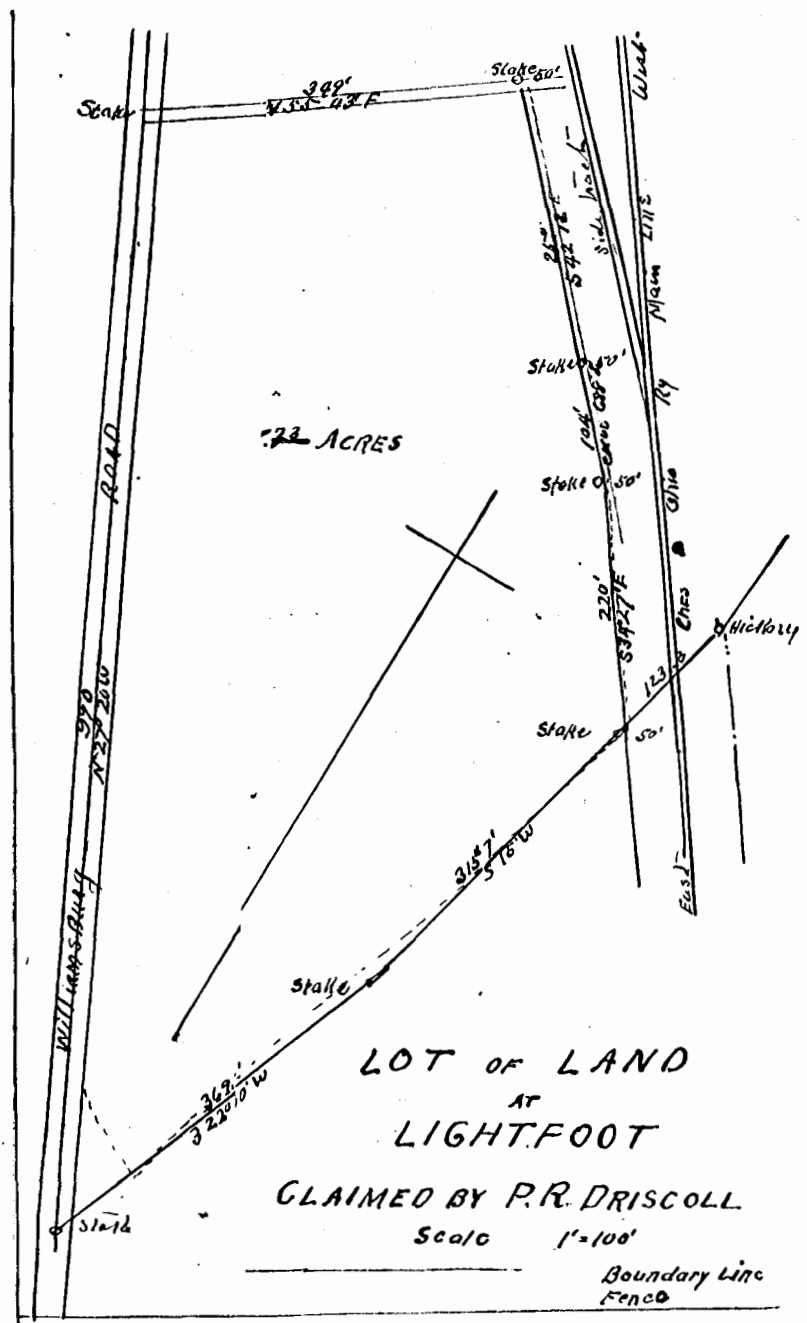


Sta	Bearing	Dist
1	S. 40 W.	9.17
2	S. 82 1/2 W.	3.33
3	N. 68 W.	1.84
4	N. 7 1/2 W.	4.34 1/2
5	N. 20 E.	2.97
6	N. 36 E.	3.92
7	N. 25 1/2 E.	1.79
8	S. 61 E.	3.39
9	S. 50 E.	5.18

Sta	Bearing	Dist
1	S. 50 E.	3.63 1/2
2	S. 40 W.	9.17
3	N. 50 W.	3.63 1/2
4	N. 40 E.	9.17

Scale two chains to one inch



Certificate.  
 The above plot represents 15 acres of land adjoining the campus of Wm. W. Barry College on the West. It was surveyed by me at request of Justice of said College for the purpose of ascertaining its acreage to effect a purchase thereof.  
 Given under my hand Nov. 10th 1903  
 R. A. Toles  
 Surveyor

Deed Recorded Book 7-page 334, James City Co  
 August 14th 1900  
 Teste

J. A. Gaddy, Clerk

Deed Recorded Deed Book No 7  
 p-363-James City County 5th Sept 11 1900.  
 Teste J. A. Gaddy, Clerk