

CURVE TABLE						
CURVE	RADIUS	DELTA	LENGTH	TANGENT	CHORD	BEARING
C1	405.00'	02°53'34"	20.45'	10.23'	20.45'	N75°40'35"E
C2	970.00'	10°21'48"	175.44'	87.96'	175.20'	N79°24'41"E
C3	1371.15'	17°03'52"	408.37'	205.71'	406.86'	S78°30'42"W

N = 3,626,638.26
E = 11,985,876.42

POWHATAN COMMUNITY SERVICES ASSOCIATION
POWHATAN RECREATION SITE
PB.55 PG.65

LINE TABLE		
LINE	LENGTH	BEARING
L1	54.11'	S33°49'49"W
L2	67.10'	S39°21'05"W
L3	57.24'	S69°27'20"W
L4	52.25'	S21°57'49"W
L5	39.77'	S80°11'49"W
L6	66.90'	N36°58'51"E
L7	33.78'	S53°01'09"E
L8	36.74'	N53°01'09"W
L9	67.64'	S45°23'50"W
L10	28.58'	S45°23'50"W
L11	20.84'	S45°23'50"W
L12	35.30'	S05°26'13"W
L13	75.44'	S05°26'13"W

CONSERVATION EASEMENT #1
61,629.70 SF
1.4148 AC

CONSERVATION EASEMENT #2
26,140.47 SF
0.6001 AC

CENTEX HOMES
PB.69 PG.33

CONSERVATION EASEMENT #3
1407.03 SF
0.0323 AC

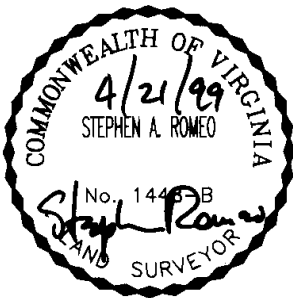
POWHATAN ENTERPRISES, INC.
DB.182 PG.416

CONSERVATION EASEMENT
PB.55 PG.63
DB.556 PG.658

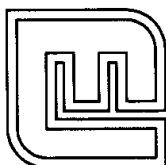
PB.64 PGS.89-92

MONTICELLO AVE. EXTENDED

NOTE:
THE COORDINATES SHOWN ON THIS PLAT ARE TIED
TO NAD 83: REFERENCE JCC STATION 322 AND 321RM3AZ.



ATTACHMENT 'A'
PLAT OF CONSERVATION EASEMENTS #1, #2 & #3
BEING THE PROPERTY OF
CENTEX HOMES
BERKELEY DISTRICT
JAMES CITY COUNTY, VIRGINIA
DATE: 7/31/98 SCALE: 1"=200'
SHEET 1 OF 1



Langley and McDonald, P.C.

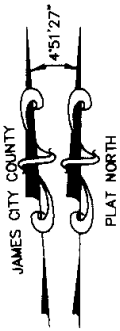
Engineers - Surveyors - Planners
Landscape Architects - Environmental Consultants

VIRGINIA BEACH

WILLIAMSBURG

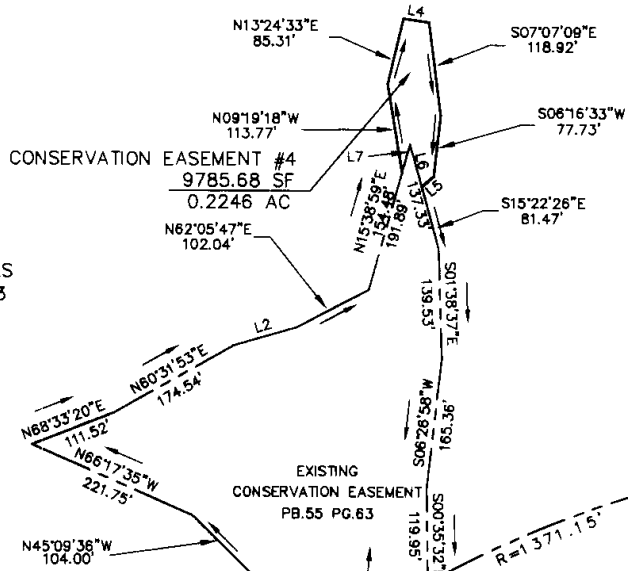
REVISED 4-21-99

MAY 25 02 19



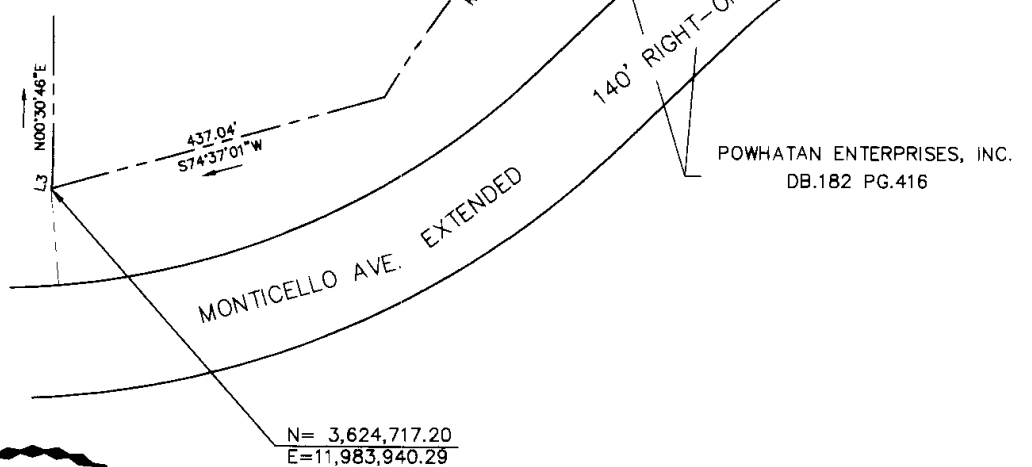
NOTE:
THE COORDINATES SHOWN ON THIS PLAT
ARE TIED TO NAD 83; REFERENCE JCC
STATION 322 AND 321RM3AZ.

CENTEX HOMES
PB.69 PG.33

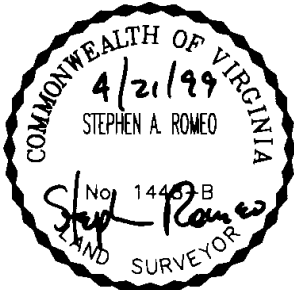


LINE TABLE		
LINE	LENGTH	BEARING
L1	35.92'	N00°48'44"E
L2	82.21'	N73°57'12"E
L3	8.27'	N13°55'26"E
L4	32.89'	S81°30'53"E
L5	20.00'	S49°33'32"W
L6	55.86'	N15°22'26"W
L7	37.41'	S15°38'59"W

POWHATAN CROSSING, INC.
DB.819 PG.564

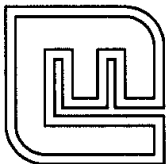


POWHATAN ENTERPRISES, INC.
DB.182 PG.416



ATTACHMENT 'B'

PLAT OF CONSERVATION EASEMENT #4
BEING THE PROPERTY OF
CENTEX HOMES
BERKELEY DISTRICT
JAMES CITY COUNTY, VIRGINIA
DATE: 7/31/98 SCALE: 1"=200'
SHEET 1 OF 1



Langley and McDonald, P.C.

Engineers - Surveyors - Planners
Landscape Architects - Environmental Consultants

VIRGINIA BEACH

WILLIAMSBURG

REVISED 4-21-99

MAY 21 8 02 AM '99