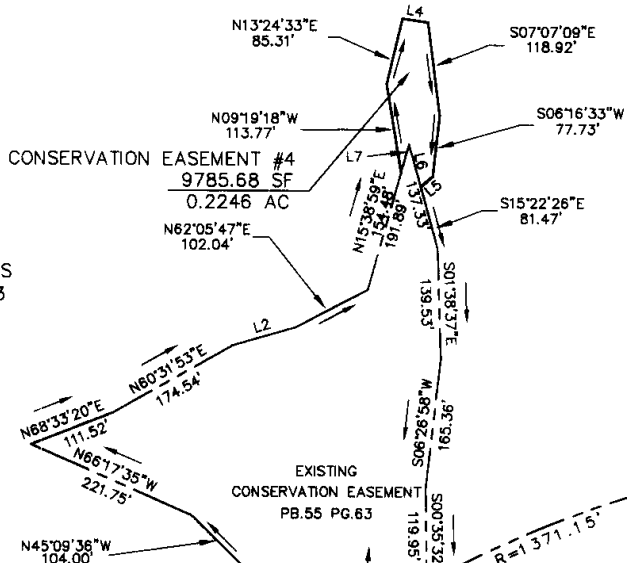




NOTE:  
THE COORDINATES SHOWN ON THIS PLAT  
ARE TIED TO NAD 83: REFERENCE JCC  
STATION 322 AND 321RM3AZ.

CENTEX HOMES  
PB.69 PG.33



LINE TABLE		
LINE	LENGTH	BEARING
L1	35.92'	N00°48'44"E
L2	82.21'	N73°57'12"E
L3	8.27'	N13°55'26"E
L4	32.89'	S81°30'53"E
L5	20.00'	S49°33'32"W
L6	55.86'	N15°22'26"W
L7	37.41'	S15°38'59"W

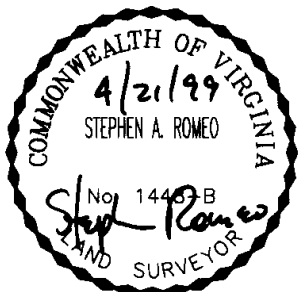
POWHATAN CROSSING, INC.  
DB.819 PG.564

POWHATAN ENTERPRISES, INC.  
DB.182 PG.416

MONTICELLO AVE. EXTENDED

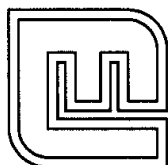
140' RIGHT-OF-WAY

N= 3,624,717.20  
E=11,983,940.29



ATTACHMENT 'B'

PLAT OF CONSERVATION EASEMENT #4  
BEING THE PROPERTY OF  
CENTEX HOMES  
BERKELEY DISTRICT  
JAMES CITY COUNTY, VIRGINIA  
DATE: 7/31/98 SCALE: 1"=200'  
SHEET 1 OF 1



**Langley and McDonald, P.C.**

Engineers - Surveyors - Planners  
Landscape Architects - Environmental Consultants

VIRGINIA BEACH

WILLIAMSBURG

REVISED 4-21-99

MAY 21 8 02 AM '99