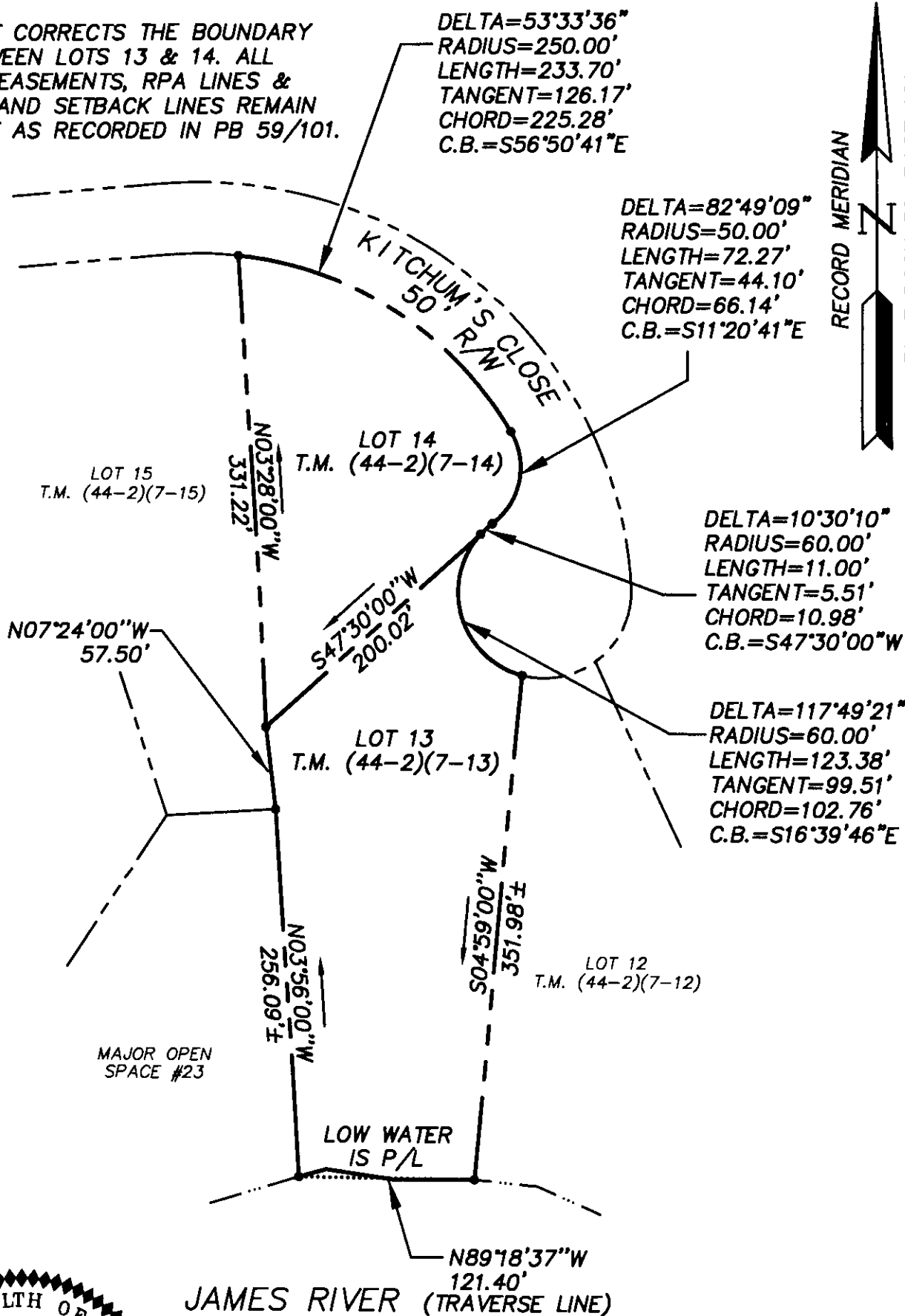


NOTE:  
THIS PLAT CORRECTS THE BOUNDARY LINE BETWEEN LOTS 13 & 14. ALL ORIGINAL EASEMENTS, RPA LINES & BUFFERS AND SETBACK LINES REMAIN IN EFFECT AS RECORDED IN PB 59/101.



MAR-38 0235



AREA TABULATION		
LOT 13	FORMER AREA 55,952 S.F.±	1.288 ACRES±
	NEW AREA 55,954 S.F.±	1.288 ACRES±
LOT 14	FORMER AREA 38,700 S.F.±	0.888 ACRES±
	NEW AREA 38,698 S.F.±	0.888 ACRES±



Consulting Engineers  
Engineers, Surveyors, Planners

5248 Olde Towne Road, Suite 1  
Williamsburg, Virginia 23188  
Ph. (757)-253-0040, Fax (757)-220-8994

PLAT SHOWING BOUNDARY LINE AGREEMENT  
BETWEEN LOT 13 & LOT 14, KITCHUM'S POND, BLOCK "B"  
THE GOVERNOR'S LAND AT TWO RIVERS

POWHATAN DISTRICT JAMES CITY COUNTY VIRGINIA

Scale: 1" = 100' Ref: PLAT BOOK 59, PAGE 101 Date: 10/13/1997 Job No: 22577/7173

14.10.97-12:46 22577P02

cmo