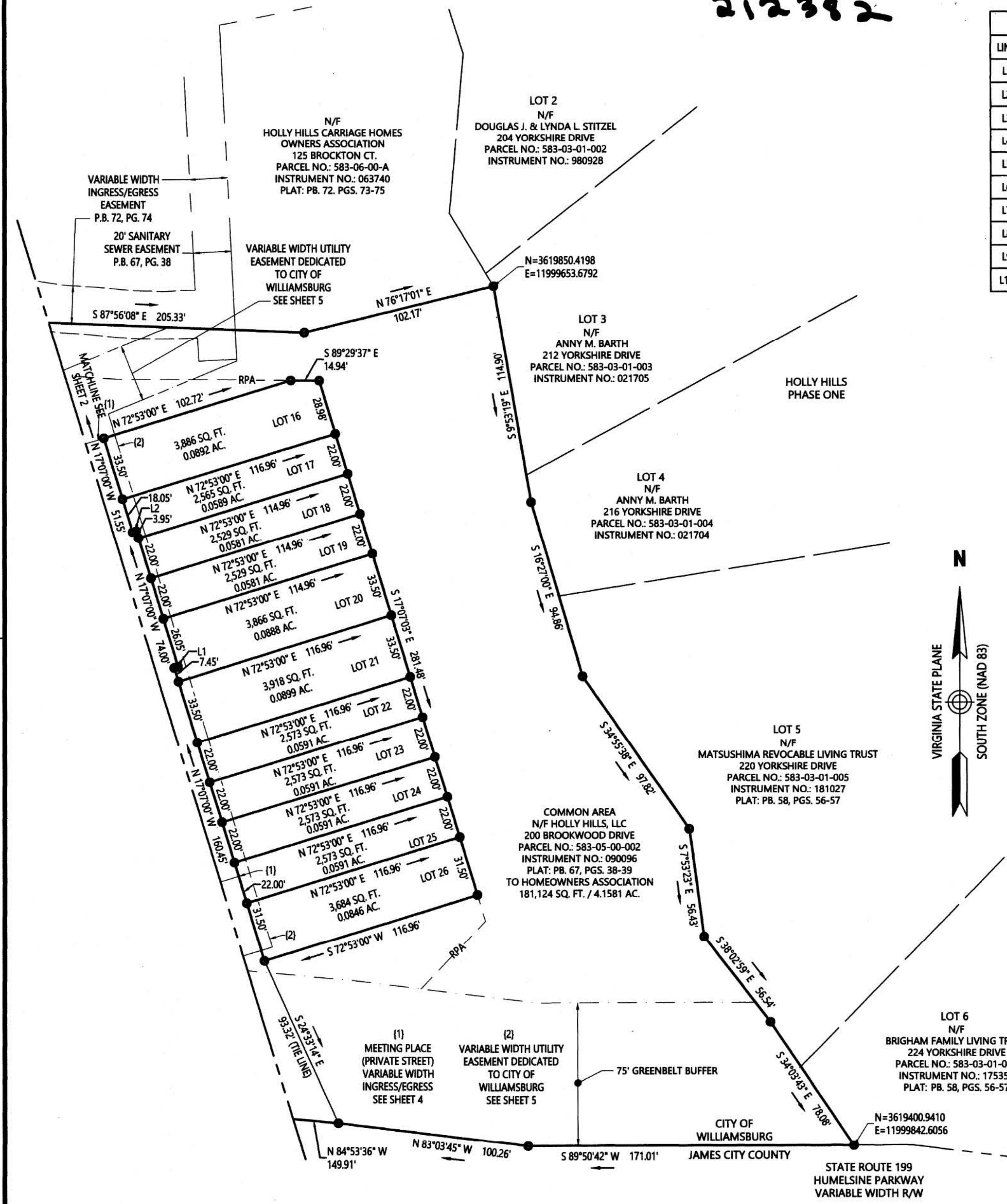


212382

LINE TABLE			LINE TABLE		
LINE	BEARING	DISTANCE	LINE	BEARING	DISTANCE
L1	N72°53'00"E	2.00	L11	N47°19'33"E	49.96
L2	S72°53'00"W	2.00	L12	N31°53'57"E	15.30
L3	S17°07'00"E	3.00	L13	N47°19'33"E	60.23
L4	N72°53'00"E	2.00	L14	N73°59'03"W	18.07
L5	N31°03'30"E	17.09	L15	S72°53'00"W	1.58
L6	N30°37'34"W	38.20	L16	S17°07'00"E	8.32
L7	N64°51'59"W	26.72	L17	S72°53'00"W	15.00
L8	N31°04'02"E	7.03	L18	N17°07'00"W	8.32
L9	S73°01'26"W	2.00	L19	N14°46'24"W	37.73
L10	S72°53'00"W	2.00	L20	N9°09'07"W	6.36

CURVE TABLE						
NUMBER	RADIUS	LENGTH	DELTA	TANGENT	CHORD BEARING	CHORD
C1	19.00'	27.88'	84°03'37"	17.13'	N73°05'50"E	25.44'
C2	13.00'	24.52'	108°04'28"	17.92'	N9°23'53"E	21.04'
C3	95.00'	11.18'	6°44'36"	5.60'	N66°48'25"E	11.17'
C4	195.00'	0.48'	0°08'32"	0.24'	N70°06'27"E	0.48'
C5	197.00'	89.80'	26°07'04"	45.69'	S85°56'32"W	89.03'
C6	397.00'	58.39'	8°25'36"	29.25'	N76°47'09"W	58.33'
C7	197.00'	11.96'	3°28'40"	5.98'	S74°37'20"W	11.96'
C8	197.00'	66.86'	19°26'39"	33.75'	S86°04'59"W	66.53'
C9	197.00'	10.99'	3°11'45"	5.50'	N82°35'49"W	10.99'
C10	397.00'	1.61'	0°13'58"	0.81'	N80°52'57"W	1.61'
C11	397.00'	22.01'	3°10'38"	11.01'	N79°10'39"W	22.01'
C12	397.00'	34.76'	5°01'00"	17.39'	N75°04'51"W	34.75'
C13	1680.17'	63.63'	2°10'11"	31.82'	N81°56'38"W	63.62'
C14	22.00'	34.56'	90°00'00"	22.00'	S62°07'00"E	31.11'
C15	1680.17'	14.91'	0°30'30"	7.45'	N82°46'28"W	14.91'
C16	1680.17'	24.28'	0°49'40"	12.14'	N82°06'23"W	24.28'
C17	1680.17'	24.44'	0°50'01"	12.22'	N81°16'32"W	24.44'
C18	297.00'	91.18'	17°35'21"	45.95'	S58°10'43"E	90.82'
C19	397.00'	97.18'	14°01'33"	48.84'	S73°59'10"E	96.94'
C20	197.00'	89.80'	26°07'04"	45.69'	N85°56'32"E	89.03'
C21	22.00'	34.41'	89°36'24"	21.85'	N61°55'12"W	31.01'
C22	221.00'	100.74'	26°07'04"	51.26'	S85°56'32"W	99.87'
C23	421.00'	103.06'	14°01'33"	51.79'	N73°59'10"W	102.80'
C24	128.00'	19.71'	8°49'24"	9.88'	N62°33'42"W	19.69'
C25	299.50'	55.57'	10°37'51"	27.87'	S61°39'28"E	55.49'
C26	399.50'	47.09'	6°45'10"	23.57'	S70°20'59"E	47.06'
C27	229.50'	61.15'	15°15'59"	30.76'	S80°30'59"W	60.97'
C28	229.50'	28.46'	7°06'21"	14.25'	N84°33'07"W	28.44'
C29	429.50'	105.14'	14°01'33"	52.83'	N73°59'10"W	104.88'
C30	329.50'	72.76'	12°39'06"	36.53'	N60°38'51"W	72.61'
C31	12.00'	7.37'	35°12'20"	3.81'	S0°29'10"W	7.26'
C32	16.50'	12.39'	43°01'50"	6.50'	S3°25'35"E	12.10'
C33	12.00'	17.76'	84°46'33"	10.95'	S17°26'47"W	16.18'



6 Large/Small Plat(s) Recorded  
 Record # 212382

City of Williamsburg & County of James City  
 Circuit Court: This PLAT was recorded on  
June 14, 2021  
 at 2:48 AM/PM PB PG  
 Document # 212382  
 MONA A. FOLEY, CLERK  
 \_\_\_\_\_, Clerk



**HOLLY HILLS TOWNHOMES**  
 BEING A  
**SUBDIVISION**  
 PROPERTY OF  
**HOLLY HILLS, LLC.**

WILLIAMSBURG, VIRGINIA  
 DATE: 5/5/2021  
 SHEET 3 OF 6



Transportation  
 Land Development  
 Environmental Services  
 351 McLaws Circle, Suite 3  
 Williamsburg, Virginia 23185  
 757 220 0500 • FAX 757 903 2794