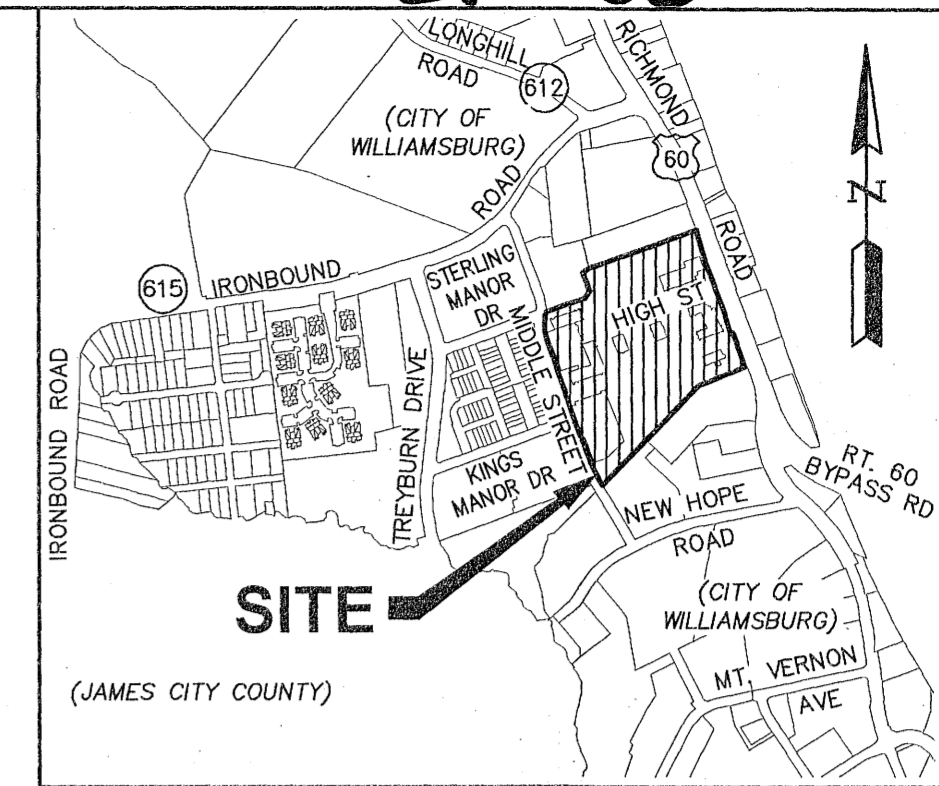
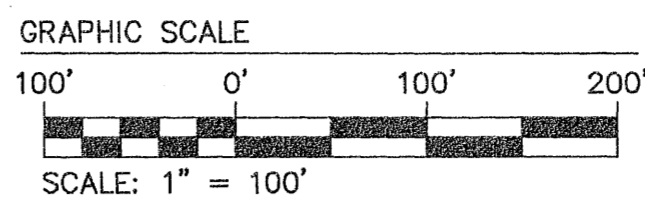
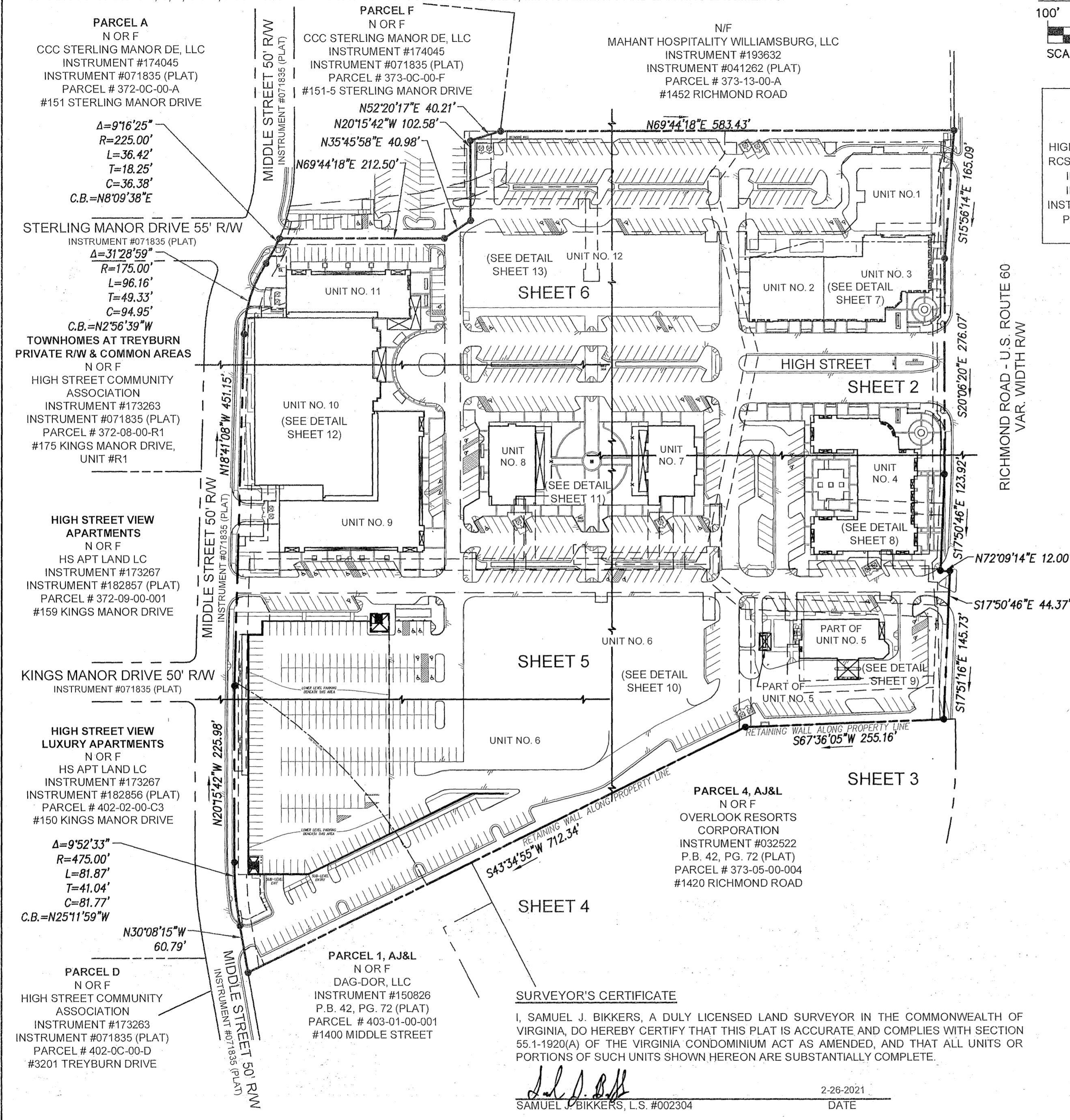


211058

REFERENCE:

- THIS SHEET SHOWS THE OVERALL BOUNDARY WITH METES AND BOUNDS OF PARCEL G-1.
- REFER TO SHEETS 2, 3, 4, 5 & 6, FOR DETAILED LOCATION OF SUBMITTED LANDS, IMPROVEMENTS AND EXISTING EASEMENTS.



**PARCEL G-1**  
755,083 SQ. FT.  
17.333 ACRES  
HIGH STREET SHOPS, LLC & RCS - HIGH STREET TIC, LLC  
INSTRUMENT #175068  
INSTRUMENT #173572  
INSTRUMENT #071835 (PLAT)  
PARCEL # 373-0C-00-G1  
#1430 HIGH STREET

CONDOMINIUM NOTES:

- THE PROPERTY AS SHOWN HEREON, BEING ALL OF PARCEL G-1, SITUATED IN THE CITY OF WILLIAMSBURG, VIRGINIA, SHOWN TO CONTAIN 17.333 ACRES MORE OR LESS, AS SHOWN ON THE PLAT PREPARED BY WOOLPERT, INC., DATED SEPTEMBER 25, 2006, ENTITLED "RESUBDIVISION OF PROPERTY OF WILLIAMSBURG HIGH STREET HOLDINGS, LLC, RESIDUAL PARCEL 2 AND CITY OF WILLIAMSBURG, VIRGINIA, PARCELS C2, G2 & G3, (INSTR. NO. 061743) WILLIAMSBURG, VIRGINIA" RECORDED AS INSTRUMENT NO. 071835 IN THE CLERK'S OFFICE OF THE CITY OF WILLIAMSBURG AND COUNTY OF JAMES CITY, VIRGINIA ("LAND RECORDS"), IS HEREBY SUBJECTED TO THE CONDOMINIUM REGIME FOR HIGH STREET CONDOMINIUM ("CONDOMINIUM") IN ACCORDANCE WITH THE VIRGINIA CONDOMINIUM ACT, TITLE 55.1, SUBTITLE IV, CHAPTER 19, §55.1-1900 ET SEQ. OF THE CODE OF VIRGINIA, 1950 EDITION, AS AMENDED.
- THE DIMENSIONS OF THE UNITS SHOWN ON THESE CONDOMINIUM PLATS ARE BASED ON THE UNIT BOUNDARIES AS DESCRIBED IN THE DECLARATION, AND REFLECT THE FIELD MEASURED DIMENSIONS OF THE UNITS.
- EACH UNIT SHALL CONSIST OF A THREE-DIMENSIONAL SPACE AS DEFINED IN THE DECLARATION OF CONDOMINIUM FOR THE CONDOMINIUM. THERE ARE PRESENTLY TWELVE (12) UNITS WITHIN THE CONDOMINIUM.
- THE ELEVATIONS SHOWN HEREON ARE BASED ON NAVD1988 DATUM.
- C.E. = COMMON ELEMENTS MEANS ALL PORTIONS OF THE PROPERTY LOCATED OUTSIDE OF THE UNITS, EXCLUDING LIMITED COMMON ELEMENTS, AS DESIGNATED AND SHOWN ON THE PLAT.
- L.C.E. = LIMITED COMMON ELEMENTS MEANS THOSE PORTIONS OF THE PROPERTY LOCATED OUTSIDE OF THE UNITS FOR THE EXCLUSIVE USE OF CERTAIN UNITS AS DESIGNATED AND SHOWN ON THE PLAT AND MORE FULLY DESCRIBED IN SECTION 2.3 AND AS PERMITTED BY SECTION 55 - 79.83(B) OF THE ACT.

GENERAL NOTES:

- THIS PLAT IS BASED UPON A CURRENT FIELD SURVEY, DEEDS AND PLATS OF RECORD. THIS PLAT WAS PREPARED WITH THE BENEFIT OF A CURRENT TITLE REPORT AND IS SUBJECT TO EASEMENTS, SERVITUDES AND COVENANTS OF RECORD.
- PROPERTY REFERENCE: INSTRUMENT #071835 (PLAT), PARCEL G-1, AREA = 755,083 SQ.FT. OR 17.333 ACRES.
- PROPERTY IS ALL OF CITY OF WILLIAMSBURG PARCEL ID: #373-0C-00-G1.
- PROPERTY ADDRESS: #1430 HIGH STREET.
- PROPERTY IS ZONED: ECONOMIC DEVELOPMENT DISTRICT, ED-2.
- PROPERTY IS SERVED BY PUBLIC WATER AND SEWER SERVICES, PROVIDED BY THE CITY OF WILLIAMSBURG.
- THIS PROPERTY LIES IN FLOOD ZONE X, AREAS DETERMINED TO BE OUTSIDE THE 0.2% ANNUAL CHANCE FLOODPLAIN PER F.I.R.M. #51095C0136D, EFFECTIVE DATE 12/16/2015.
- PORTIONS OF THIS SITE LIE IN RESOURCE MANAGEMENT AREAS (RMA) AS DESIGNATED IN THE CHESAPEAKE BAY PRESERVATION ORDINANCE.
- STRUCTURAL IMPROVEMENTS EXIST ON UNIT 2, UNIT 3, UNIT 4, UNIT 5, UNIT 7, UNIT 8, UNIT 9, UNIT 10, AND UNIT 11.
- CURRENTLY UNIT 1, UNIT 6, AND UNIT 12 ARE VACANT OF STRUCTURAL IMPROVEMENTS.

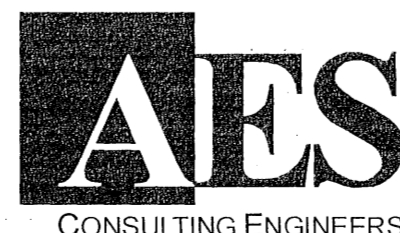
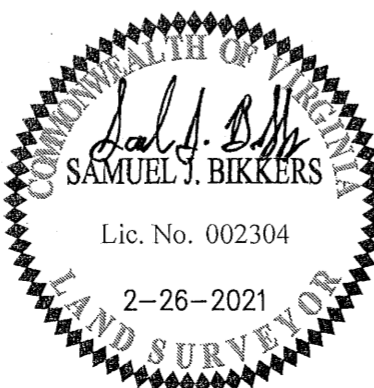
SURVEYOR'S CERTIFICATE

I, SAMUEL J. BIKKERS, A DULY LICENSED LAND SURVEYOR IN THE COMMONWEALTH OF VIRGINIA, DO HEREBY CERTIFY THAT THIS PLAT IS ACCURATE AND COMPLIES WITH SECTION 55.1-1920(A) OF THE VIRGINIA CONDOMINIUM ACT AS AMENDED, AND THAT ALL UNITS OR PORTIONS OF SUCH UNITS SHOWN HEREON ARE SUBSTANTIALLY COMPLETE.

*Samuel J. Bickers*  
SAMUEL J. BIKKERS, L.S. #002304  
2-26-2021  
DATE

13	Large Small Plats) Recorded herewith as # 211058
Rev.	Date

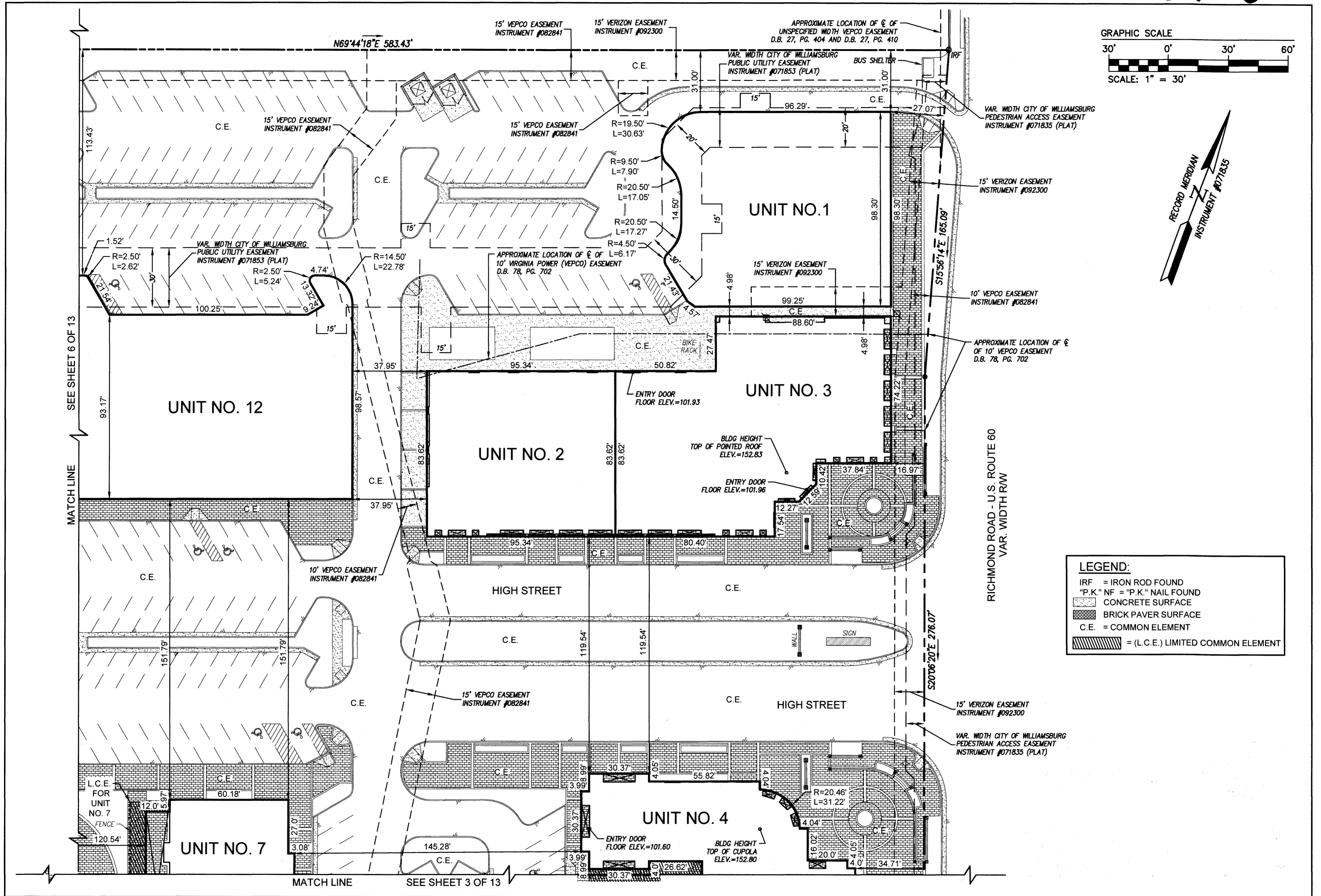
City of Williamsburg & County of James City  
Circuit Court: This PLAT was recorded on March 29, 2021  
at 3:13 pm PG. 211058  
Document # 211058  
MONA A. FOLEY, CLERK  
*Mona A. Foley*, Clerk



5248 Olde Towne Road, Suite 1  
Williamsburg, Virginia 23108  
Phone: (757) 253-0040  
Fax: (757) 220-8994  
www.aesva.com

EXHIBIT D  
CONDOMINIUM PLATS SHOWING  
SUBMITTED LAND, IMPROVEMENTS AND EXISTING EASEMENTS  
**HIGH STREET CONDOMINIUM**  
CITY OF WILLIAMSBURG VIRGINIA

Project Contacts:	SJB / CMA
Project Number:	W10594-00
Scale:	1" = 100'
Date:	02-26-2021
Sheet Number	1 OF 13



**LEGEND:**

- IRF = IRON ROD FOUND
- "P.K." NF = "P.K." NAIL FOUND
- [Pattern] CONCRETE SURFACE
- [Pattern] BRICK PAVER SURFACE
- C.E. = COMMON ELEMENT
- [Pattern] = (L.C.E.) LIMITED COMMON ELEMENT

City of Williamsburg & County of James City  
 Circuit Court: This PLAT was recorded on  
 March 29, 2021  
 at 3:13 pm, PG. 13  
 Document # 211058  
 MONA A. FOLEY, CLERK  
 Clerk

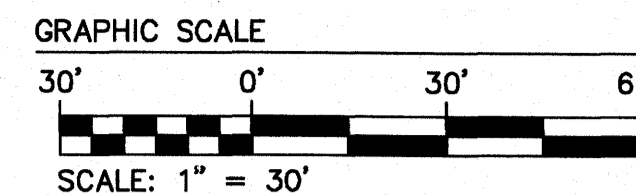
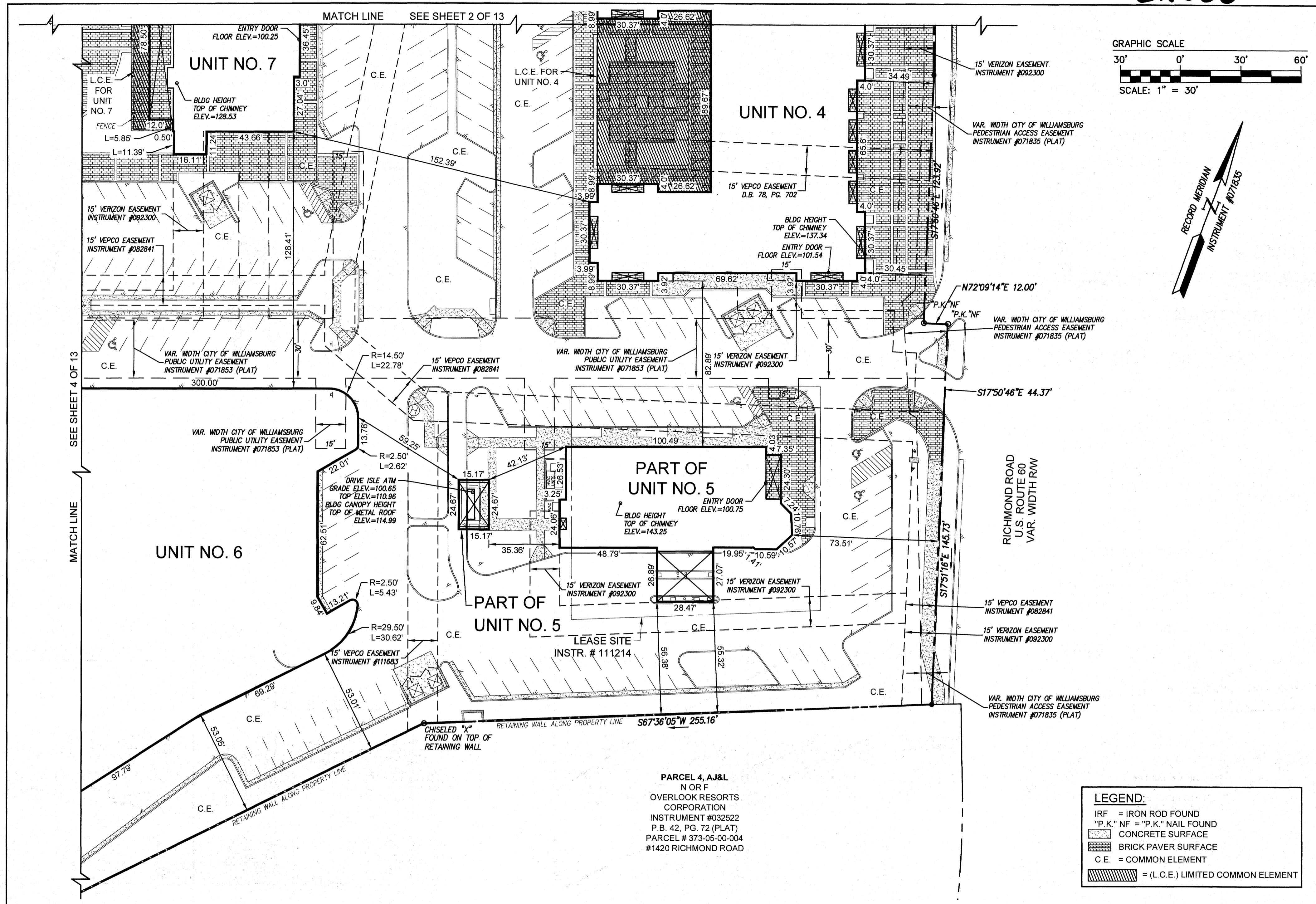


**AES**  
 CONSULTING ENGINEERS  
 5248 Olde Towne Road, Suite 1  
 Williamsburg, Virginia 23188  
 Phone: (757) 253-0040  
 Fax: (757) 220-8994  
 www.aesva.com

**EXHIBIT D**  
 CONDOMINIUM PLATS SHOWING  
 SUBMITTED LAND, IMPROVEMENTS AND EXISTING EASEMENTS  
**HIGH STREET CONDOMINIUM**  
 CITY OF WILLIAMSBURG VIRGINIA

Project Contacts: SJB / CMA  
 Project Number: W10594-00  
 Scale: 1" = 30'  
 Date: 02-26-2021  
 Sheet Number  
**2 OF 13**





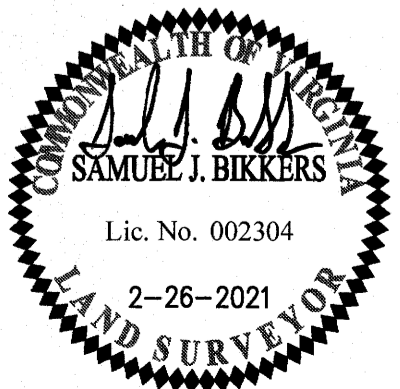
**LEGEND:**

- IRF = IRON ROD FOUND
- "P.K." NF = "P.K." NAIL FOUND
- [Pattern] CONCRETE SURFACE
- [Pattern] BRICK PAVER SURFACE
- C.E. = COMMON ELEMENT
- [Pattern] = (L.C.E.) LIMITED COMMON ELEMENT

PARCEL 4, AJ&L  
N OR F  
OVERLOOK RESORTS  
CORPORATION  
INSTRUMENT #032522  
P.B. 42, PG. 72 (PLAT)  
PARCEL # 373-05-00-004  
#1420 RICHMOND ROAD

13 Large/Small Plats Recorded  
herewith as # 211058

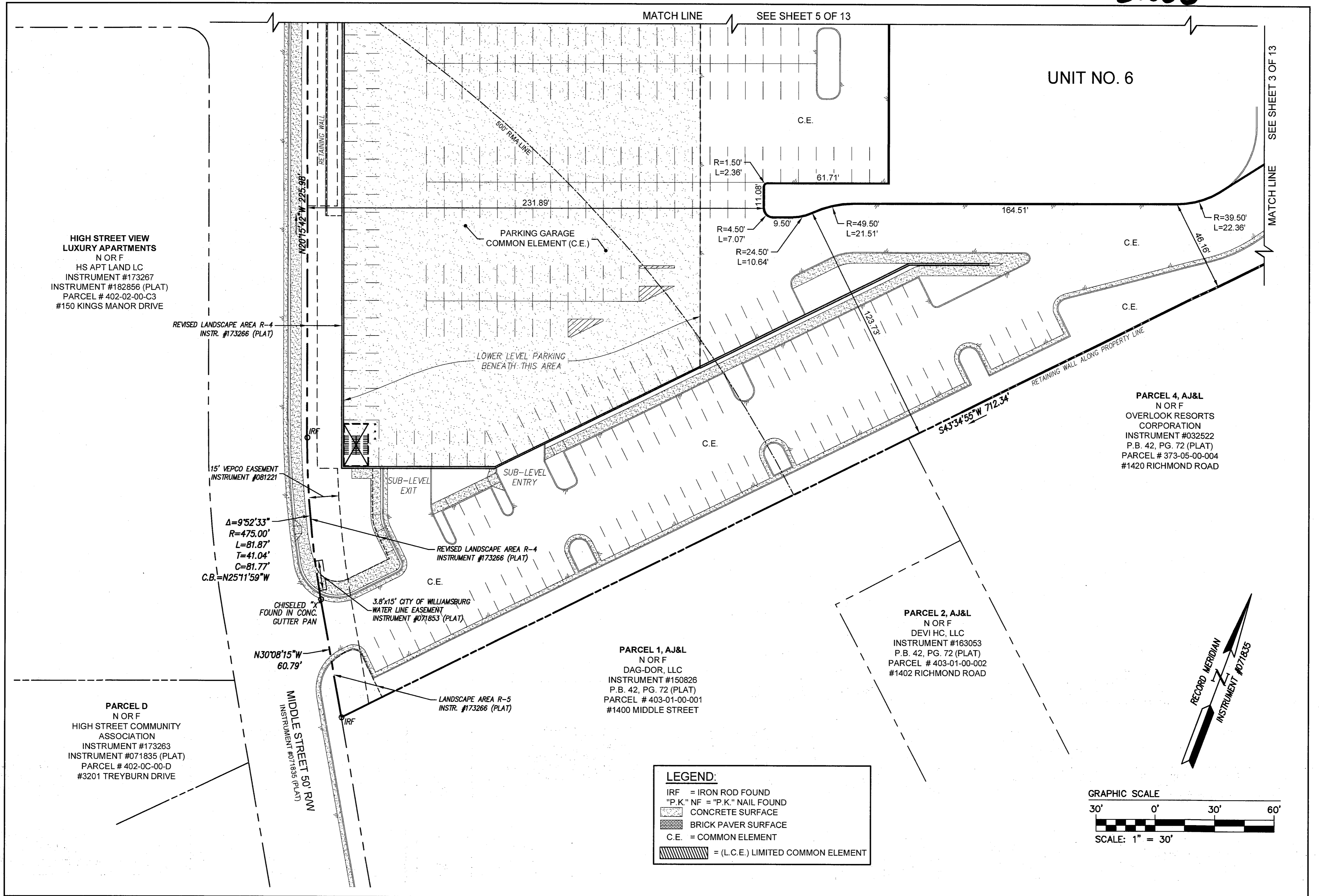
City of Williamsburg & County of James City  
Circuit Court: This PLAT was recorded on  
March 29, 2021  
at 3:13 AM (PM) PB PG  
Document # 211058  
MONA A. FOLEY, CLERK  
Mona A. Foley, Clerk



**AES**  
CONSULTING ENGINEERS  
Hampton Roads | Central Virginia | Middle Peninsula  
5248 Olde Towne Road, Suite 1  
Williamsburg, Virginia 23188  
Phone: (757) 253-0040  
Fax: (757) 220-8994  
www.aesva.com

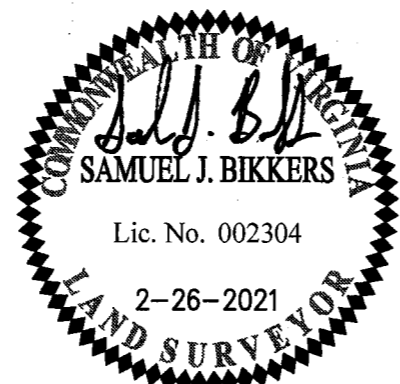
EXHIBIT D  
CONDOMINIUM PLATS SHOWING  
SUBMITTED LAND, IMPROVEMENTS AND EXISTING EASEMENTS  
**HIGH STREET CONDOMINIUM**  
CITY OF WILLIAMSBURG VIRGINIA

Project Contacts: SJB / CMA  
Project Number: W10594-00  
Scale: 1" = 30' Date: 02-26-2021  
Sheet Number  
**3 OF 13**



13	Large/Small Plat(s) Recorded herewith as # 21058
Rev.	Date

City of Williamsburg & County of James City  
 Circuit Court: This PLAT was recorded on March 29, 2021  
 at 3:13 AM/PM, PB PG  
 Document # 211058  
 MONA A. FOLEY, CLERK  
 Clerk



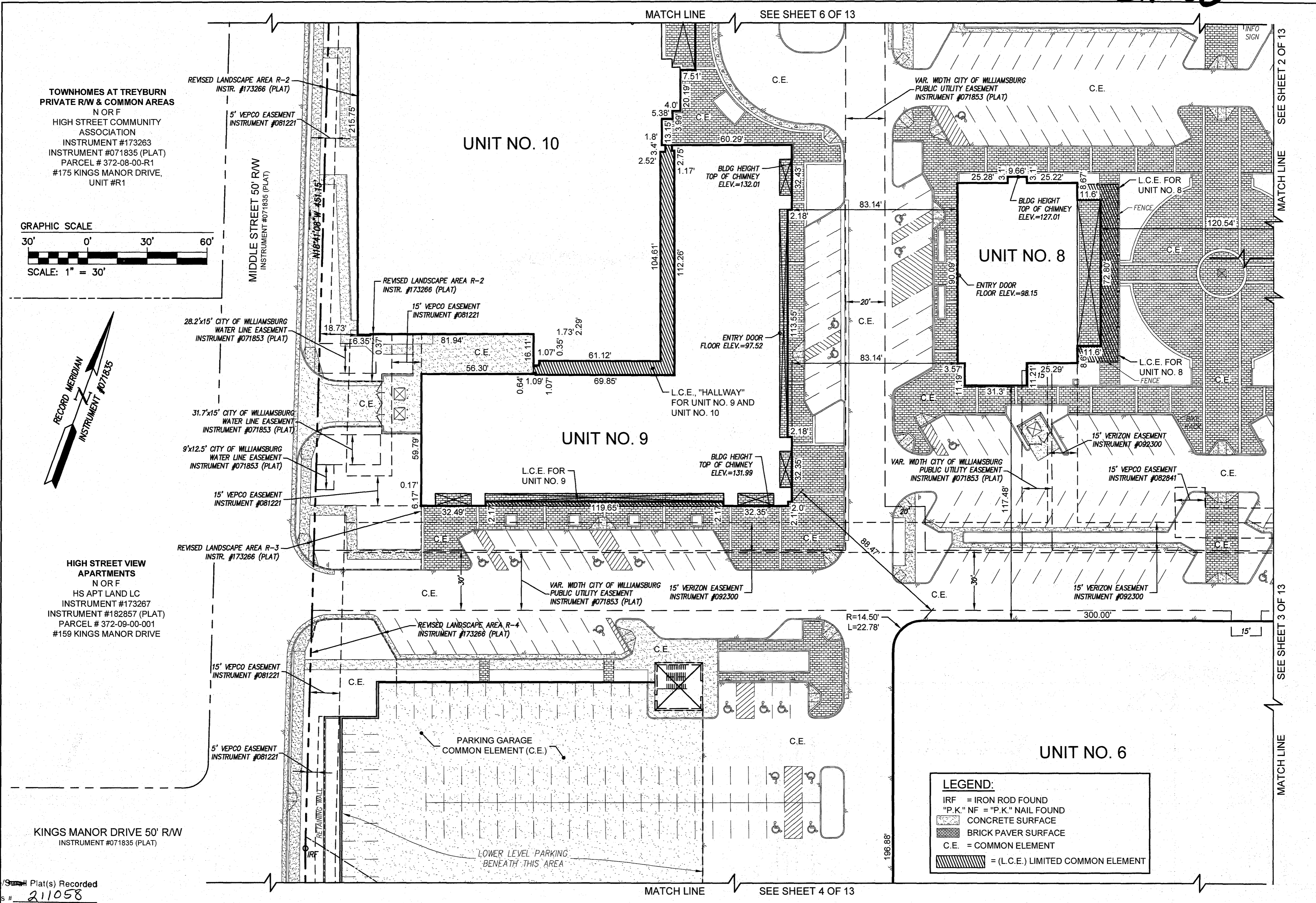
5248 Olde Towne Road, Suite 1  
 Williamsburg, Virginia 23188  
 Phone: (757) 253-0040  
 Fax: (757) 220-8994  
 www.aesva.com

Hampton Roads | Central Virginia | Middle Peninsula

**EXHIBIT D**  
 CONDOMINIUM PLATS SHOWING  
 SUBMITTED LAND, IMPROVEMENTS AND EXISTING EASEMENTS  
**HIGH STREET CONDOMINIUM**  
 CITY OF WILLIAMSBURG VIRGINIA

Project Contacts: SJB / CMA  
 Project Number: W10594-00  
 Scale: 1" = 30' Date: 02-26-2021  
 Sheet Number  
**4 OF 13**



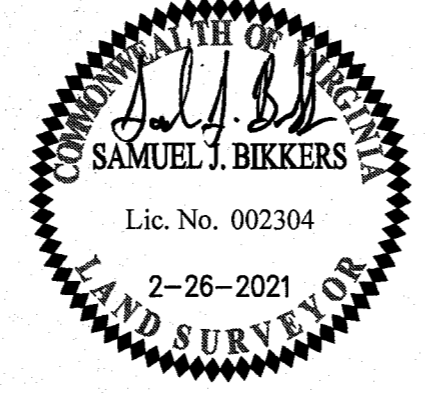


**LEGEND:**

- IRF = IRON ROD FOUND
- "P.K." NF = "P.K." NAIL FOUND
- [Pattern] CONCRETE SURFACE
- [Pattern] BRICK PAVER SURFACE
- C.E. = COMMON ELEMENT
- [Pattern] = (L.C.E.) LIMITED COMMON ELEMENT

13 Large Sheet Plat(s) Recorded herewith as # 211058

City of Williamsburg & County of James City Circuit Court: This PLAT was recorded on <i>March 29, 2021</i>	
at 3:13 AM PM PB PG	
Document # 211058	
MONA A. FOLEY, CLERK	Clerk
Rev. Date	Description
Revised By	



**AES**  
CONSULTING ENGINEERS

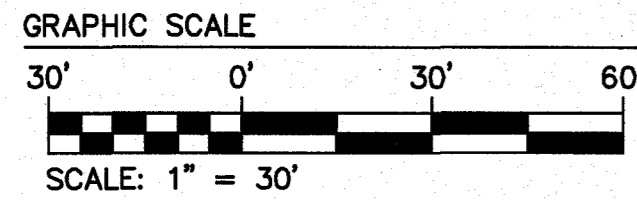
5248 Olde Towne Road, Suite 1  
Williamsburg, Virginia 23188  
Phone: (757) 253-0040  
Fax: (757) 220-8994  
www.aesva.com

Hampton Roads | Central Virginia | Middle Peninsula

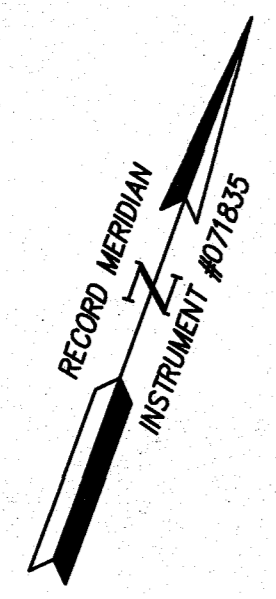
**EXHIBIT D**  
CONDOMINIUM PLATS SHOWING  
SUBMITTED LAND, IMPROVEMENTS AND EXISTING EASEMENTS  
**HIGH STREET CONDOMINIUM**

CITY OF WILLIAMSBURG VIRGINIA

Project Contacts: SJB / CMA  
Project Number: W10594-00  
Scale: 1" = 30'  
Date: 02-26-2021  
Sheet Number  
**5 OF 13**



**LEGEND:**  
 IRF = IRON ROD FOUND  
 "P.K." NF = "P.K." NAIL FOUND  
 CONCRETE SURFACE  
 BRICK PAVER SURFACE  
 C.E. = COMMON ELEMENT  
 = (L.C.E.) LIMITED COMMON ELEMENT



**PARCEL A**  
 N OR F  
 CCC STERLING MANOR DE, LLC  
 INSTRUMENT #174045  
 INSTRUMENT #071835 (PLAT)  
 PARCEL # 372-0C-00-A  
 #151 STERLING MANOR DRIVE

**PARCEL F**  
 N OR F  
 CCC STERLING MANOR DE, LLC  
 INSTRUMENT #174045  
 INSTRUMENT #071835 (PLAT)  
 PARCEL # 373-0C-00-F  
 #151-5 STERLING MANOR DRIVE

N/F  
 MAHANT HOSPITALITY WILLIAMSBURG, LLC  
 INSTRUMENT #193632  
 INSTRUMENT #041262 (PLAT)  
 PARCEL # 373-13-00-A  
 #1452 RICHMOND ROAD

STERLING MANOR DRIVE 55' R/W  
 INSTRUMENT #071835 (PLAT)

TOWNHOMES AT TREYBURN  
 PRIVATE R/W & COMMON AREAS  
 N OR F  
 HIGH STREET COMMUNITY  
 ASSOCIATION  
 INSTRUMENT #173263  
 INSTRUMENT #071835 (PLAT)  
 PARCEL # 372-08-00-R1  
 #175 KINGS MANOR DRIVE,  
 UNIT #R1

$\Delta=9^{\circ}16'25''$   
 $R=225.00'$   
 $L=36.42'$   
 $T=18.25'$   
 $C=36.38'$   
 $C.B.=N8^{\circ}09'38''E$

$\Delta=31^{\circ}28'59''$   
 $R=175.00'$   
 $L=96.16'$   
 $T=49.33'$   
 $C=94.95'$   
 $C.B.=N2^{\circ}56'39''W$

VAR. WIDTH CITY OF WILLIAMSBURG  
 PEDESTRIAN ACCESS EASEMENT  
 INSTRUMENT #071835 (PLAT)

VAR. WIDTH CITY OF WILLIAMSBURG  
 PUBLIC UTILITY EASEMENT  
 INSTRUMENT #071853 (PLAT)

VAR. WIDTH CITY OF WILLIAMSBURG  
 PUBLIC UTILITY EASEMENT  
 INSTRUMENT #071853 (PLAT)

15' VEPCO EASEMENT  
 INSTRUMENT #081221

REVISED LANDSCAPE AREA R-1  
 INSTR. #173266 (PLAT)

15' VEPCO EASEMENT  
 INSTRUMENT #081221

19.2'x15' CITY OF WILLIAMSBURG  
 WATER LINE EASEMENT  
 INSTRUMENT #071853 (PLAT)

REVISED LANDSCAPE AREA R-2  
 INSTR. #173266 (PLAT)

5' VEPCO EASEMENT  
 INSTRUMENT #081221

REVISED LANDSCAPE AREA R-2  
 INSTR. #173266 (PLAT)

L.C.E. "HALLWAY"  
 FOR UNIT NO. 10 AND  
 UNIT NO. 11

L.C.E. FOR  
 UNIT NO. 11

UNIT NO. 10

UNIT NO. 11

UNIT NO. 12

BLDG HEIGHT  
 TOP OF CHIMNEY  
 ELEV.=132.29

ENTRY DOOR  
 FLOOR ELEV.=97.60

ENTRY DOOR  
 FLOOR ELEV.=97.67

BLDG HEIGHT  
 TOP OF CUPOLA  
 ELEV.=167.13

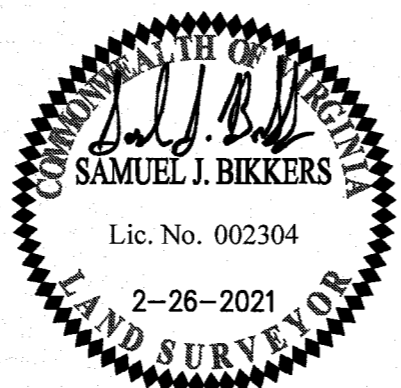
MATCH LINE SEE SHEET 5 OF 13

SEE SHEET 2 OF 13

MATCH LINE

13	Larger Plat(s) Recorded herewith as # 211058
Rev	Date

City of Williamsburg & County of James City  
 Circuit Court: This PLAT was recorded on  
 March 29, 2021  
 at 3:13 AM / PM PB PG  
 Document # 211058  
 MONA A. FOLEY, CLERK  
 Clerk



5248 Olde Towne Road, Suite 1  
 Williamsburg, Virginia 23188  
 Phone: (757) 253-0040  
 Fax: (757) 220-8994  
 www.aesva.com

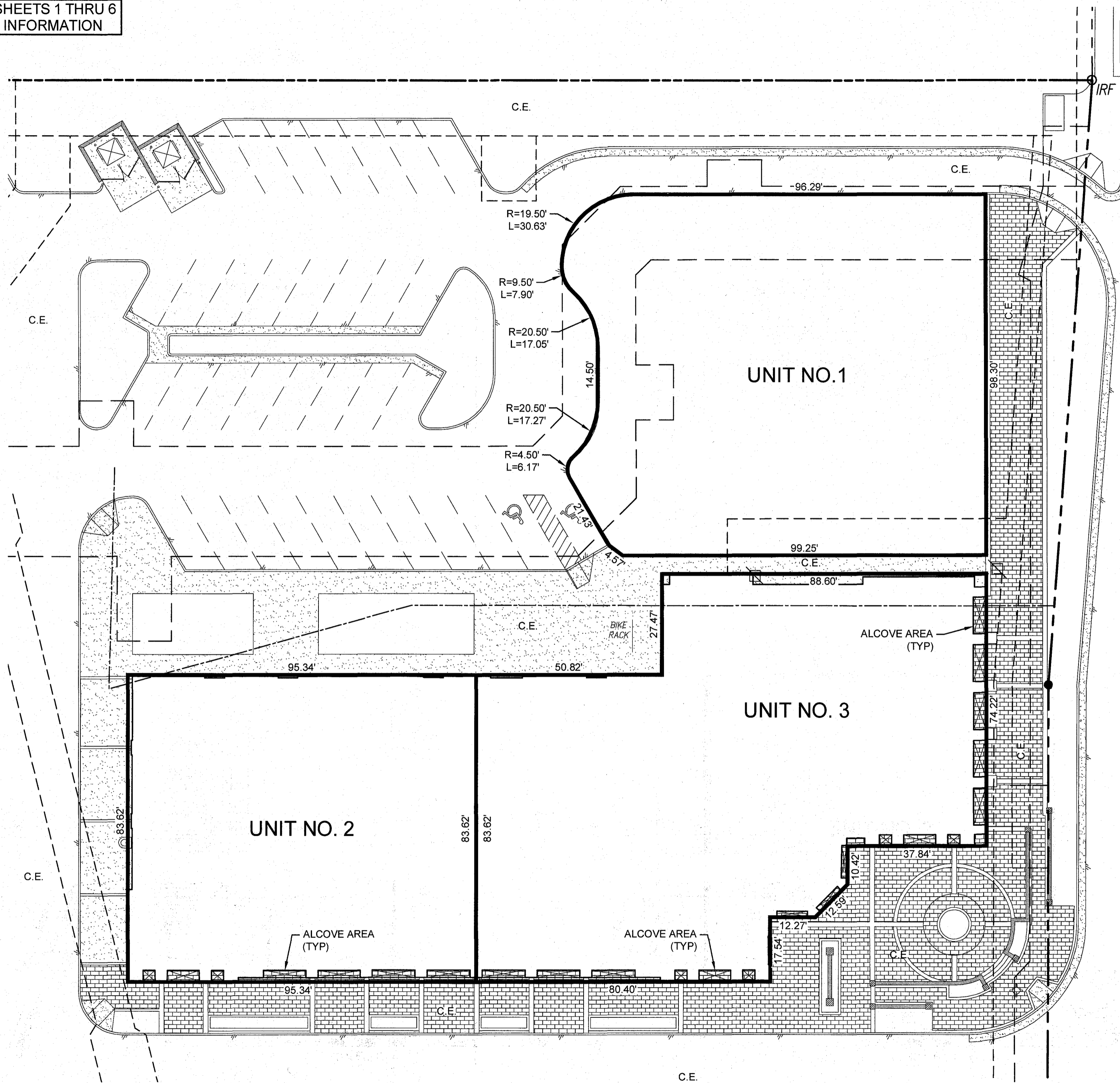
Hampton Roads | Central Virginia | Middle Peninsula

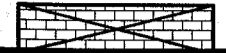
**EXHIBIT D**  
 CONDOMINIUM PLATS SHOWING  
 SUBMITTED LAND, IMPROVEMENTS AND EXISTING EASEMENTS  
**HIGH STREET CONDOMINIUM**  
 CITY OF WILLIAMSBURG VIRGINIA

Project Contacts:	SJB / CMA
Project Number:	W10594-00
Scale:	1" = 30'
Date:	02-26-2021
Sheet Number	6 OF 13

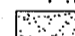




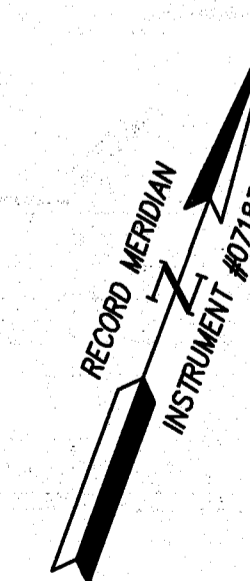
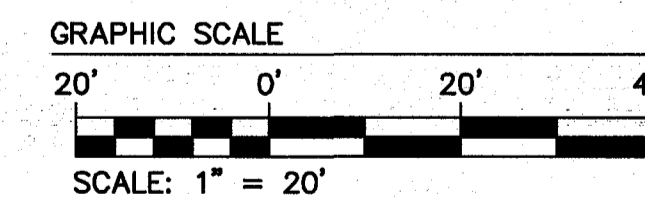
REFER TO SHEETS 1 THRU 6  
FOR PLAT INFORMATION



**NOTE:**  
AREAS DESIGNATED AS  ARE RECESSED STOREFRONTS AND ENTRANCE ALCOVES AND ARE PART OF OF UNIT NO. 2 AND PART OF UNIT NO. 3 RESPECTFULLY, HOWEVER THE ASSOCIATION IS RESPONSIBLE FOR MAINTAINING AND REPLACING THE PAVERS IN THE AREAS DESIGNATED AS SUCH.

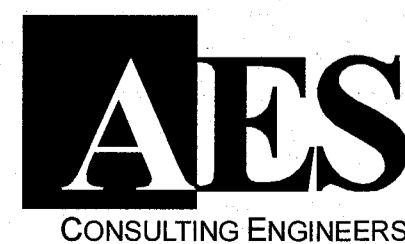
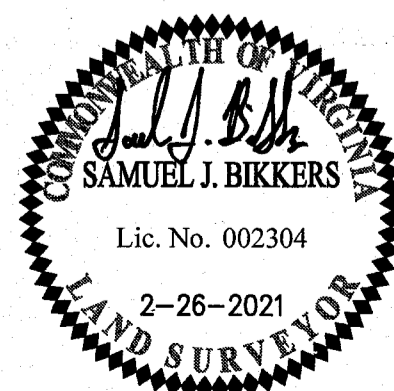
**LEGEND:**

- IRF = IRON ROD FOUND
- "P.K." NF = "P.K." NAIL FOUND
-  CONCRETE SURFACE
-  BRICK PAVER SURFACE
- C.E. = COMMON ELEMENT
-  = (L.C.E.) LIMITED COMMON ELEMENT



13	Large	Small	Plat(s) Recorded
herewith as #	211058		
Rev.	Date	Clerk	

City of Williamsburg & County of James City  
Circuit Court: This PLAT was recorded on  
*March 29, 2021*  
at *3:13* AM (PM) PB PG  
Document # *211058*  
MONA A. FOLEY, CLERK  
*Mona A. Foley*




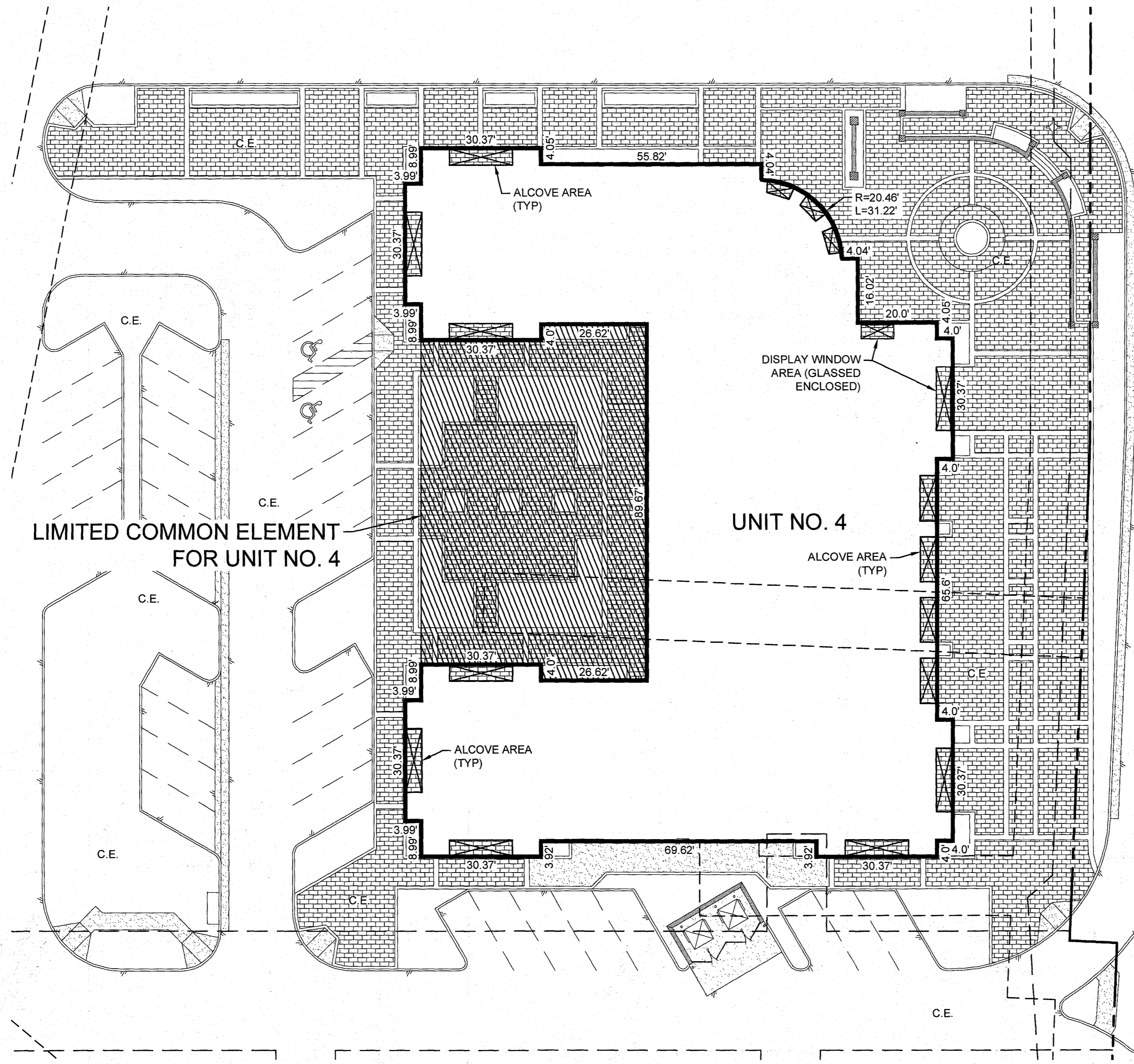
5248 Olde Towne Road, Suite 1  
Williamsburg, Virginia 23188  
Phone: (757) 253-0040  
Fax: (757) 220-8994  
www.aesva.com

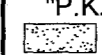

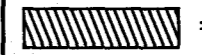
**EXHIBIT D**  
CONDOMINIUM PLATS SHOWING  
SUBMITTED LAND, IMPROVEMENTS AND EXISTING EASEMENTS  
**HIGH STREET CONDOMINIUM**  
CITY OF WILLIAMSBURG VIRGINIA

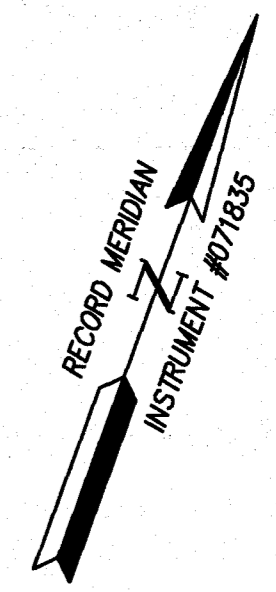
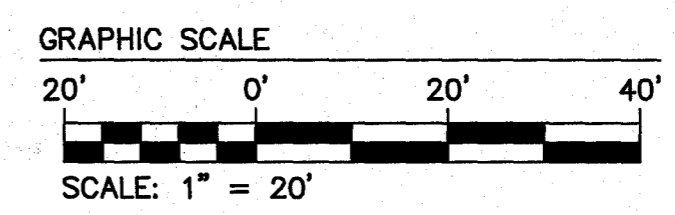
Project Contacts:	SJB / CMA
Project Number:	W10594-00
Scale:	1" = 20'
Date:	02-26-2021
Sheet Number	<b>7 OF 13</b>

REFER TO SHEETS 1 THRU 6  
FOR PLAT INFORMATION

**NOTE:**  
AREAS DESIGNATED AS  ARE RECESSED STOREFRONTS AND ENTRANCE ALCOVES AND ARE PART OF OF UNIT NO. 4, HOWEVER THE ASSOCIATION IS RESPONSIBLE FOR MAINTAINING AND REPLACING THE PAVERS IN THE AREAS DESIGNATED AS SUCH.



**LEGEND:**  
 IRF = IRON ROD FOUND  
 "P.K." NF = "P.K." NAIL FOUND  
 CONCRETE SURFACE  
 BRICK PAVES SURFACE  
 C.E. = COMMON ELEMENT  
 = (L.C.E.) LIMITED COMMON ELEMENT



13	Large/Small Plot(s) Recorded herewith as #	211058
Rev.	Date	

City of Williamsburg & County of James City  
 Circuit Court: This PLAT was recorded on March 29, 2021  
 at 3:13 AM/PM PG      
 Document # 211058  
 MONA A. FOLEY, CLERK  
*Mona A. Foley* Clerk



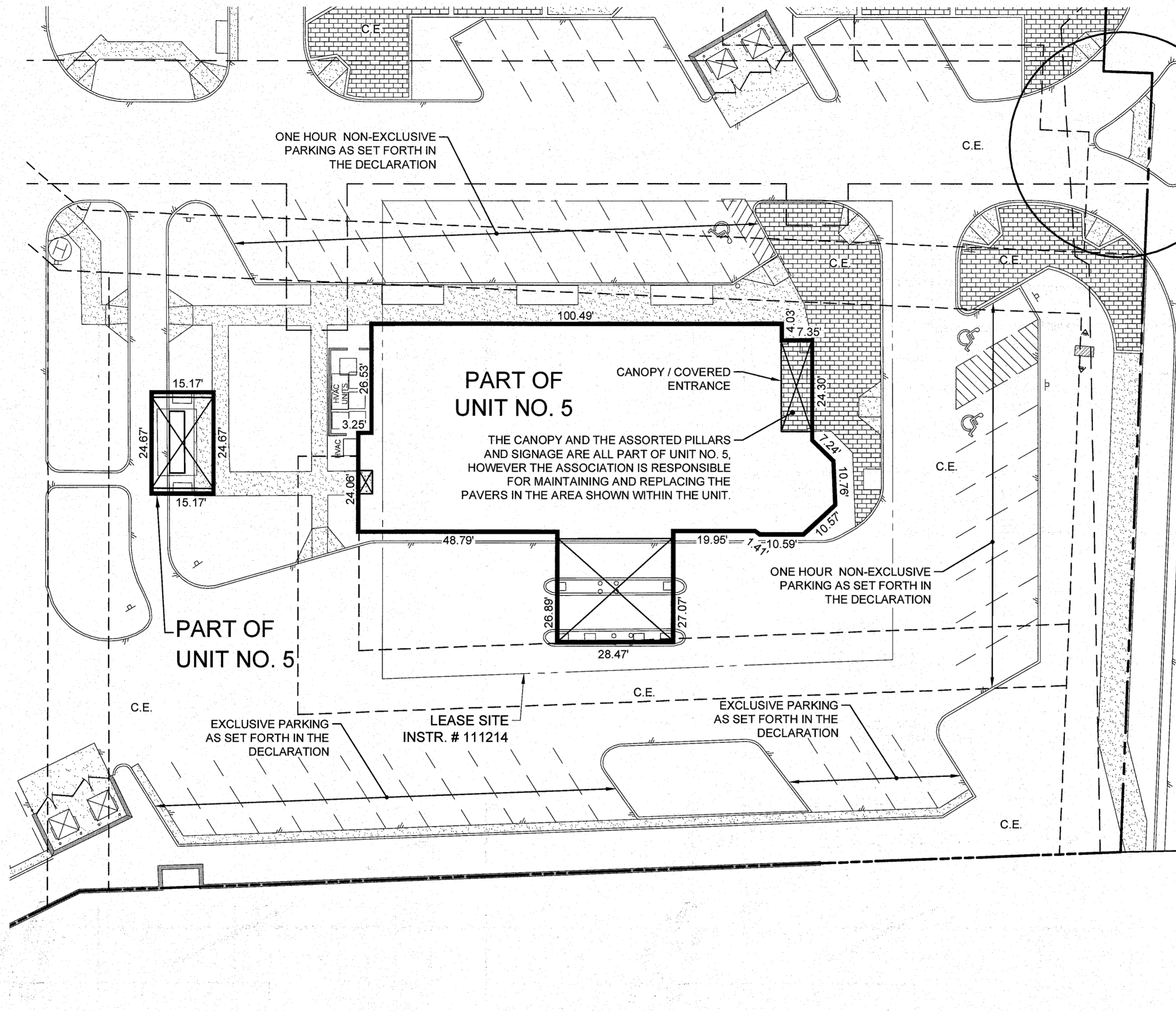
**AES**  
 CONSULTING ENGINEERS  
 Hampton Roads | Central Virginia | Middle Peninsula  
 5248 Olde Towne Road, Suite 1  
 Williamsburg, Virginia 23188  
 Phone: (757) 253-0040  
 Fax: (757) 220-8994  
 www.aesva.com

**EXHIBIT D**  
 CONDOMINIUM PLATS SHOWING  
 SUBMITTED LAND, IMPROVEMENTS AND EXISTING EASEMENTS  
**HIGH STREET CONDOMINIUM**  
 CITY OF WILLIAMSBURG VIRGINIA

Project Contacts:	SJB / CMA
Project Number:	W10594-00
Scale:	Date:
1" = 20'	02-26-2021
Sheet Number	
<b>8 OF 13</b>	



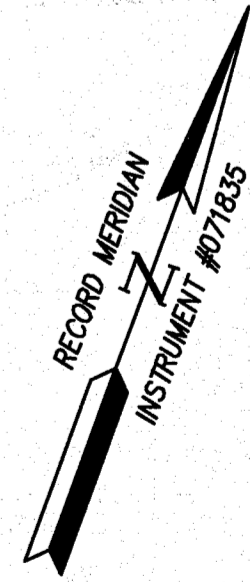
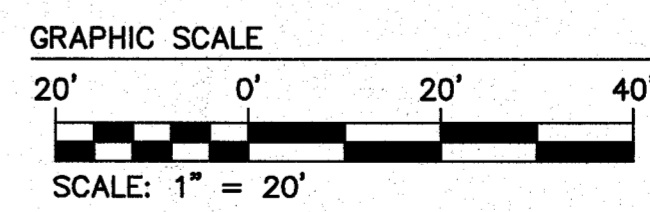
REFER TO SHEETS 1 THRU 6 FOR PLAT INFORMATION



PROTECTED ACCESS POINT AS SET FORTH IN THE DECLARATION

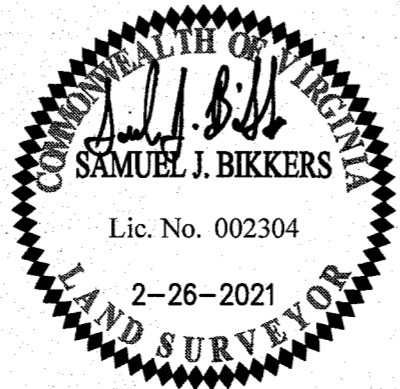
**LEGEND:**

- IRF = IRON ROD FOUND
- "P.K." NF = "P.K." NAIL FOUND
- [Stippled Pattern] CONCRETE SURFACE
- [Brick Pattern] BRICK PAVER SURFACE
- C.E. = COMMON ELEMENT
- [Hatched Pattern] = (L.C.E.) LIMITED COMMON ELEMENT



13	Large (11x17) Plat	Recorded
	herewith as #	211058
Rev.	Date	

City of Williamsburg & County of James City  
 Circuit Court: This PLAT was recorded on March 29, 2021  
 at 3:13 AM/PM PB PG  
 Document # 211058  
 MONA A. FOLEY, CLERK  
*Mona Foley*, Clerk



**AES**  
 CONSULTING ENGINEERS

5249 Olde Towne Road, Suite 1  
 Williamsburg, Virginia 23188  
 Phone: (757) 253-0040  
 Fax: (757) 220-8994  
 www.aesva.com

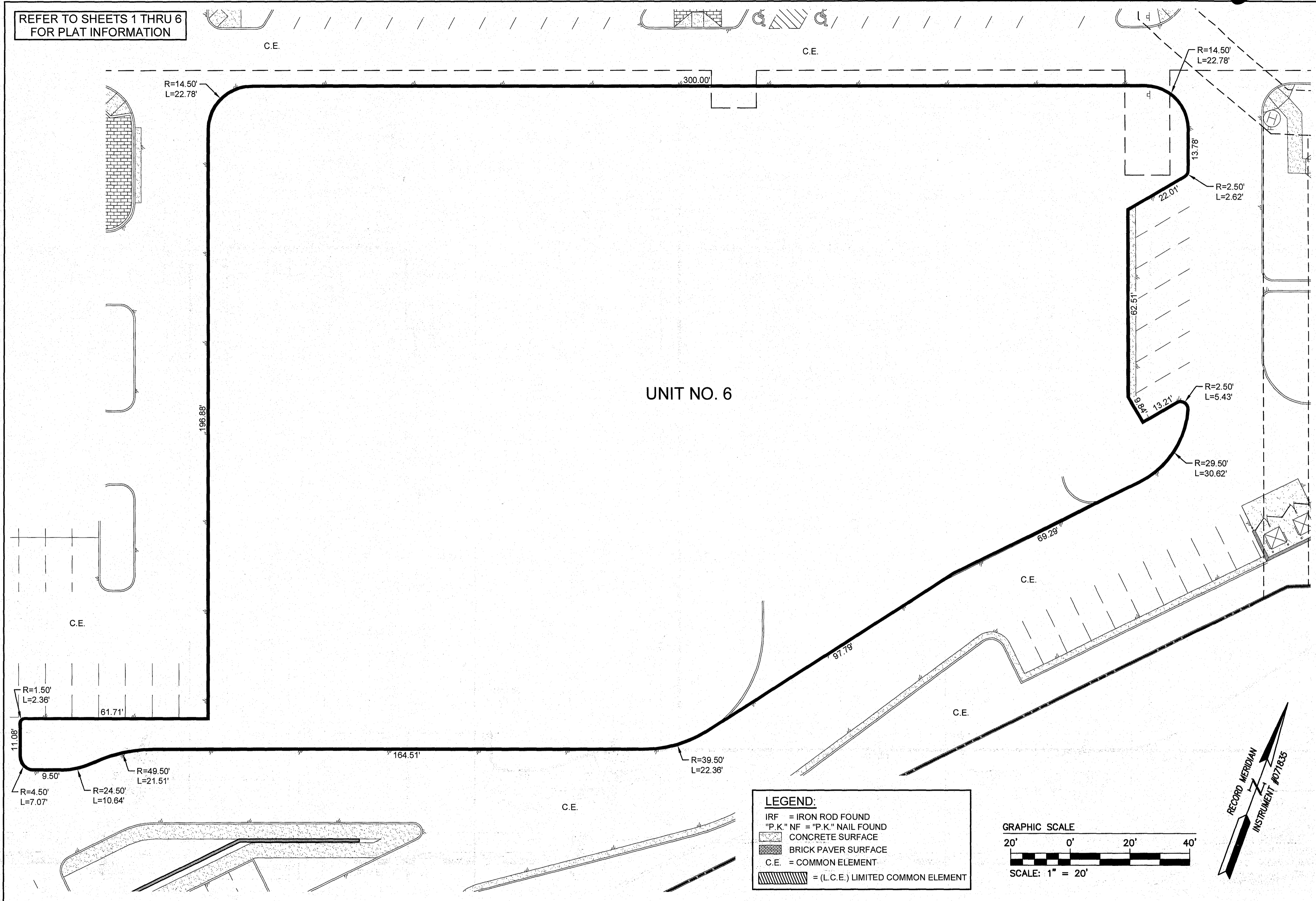
Hampton Roads | Central Virginia | Middle Peninsula

**EXHIBIT D**  
 CONDOMINIUM PLATS SHOWING  
 SUBMITTED LAND, IMPROVEMENTS AND EXISTING EASEMENTS  
**HIGH STREET CONDOMINIUM**

CITY OF WILLIAMSBURG VIRGINIA

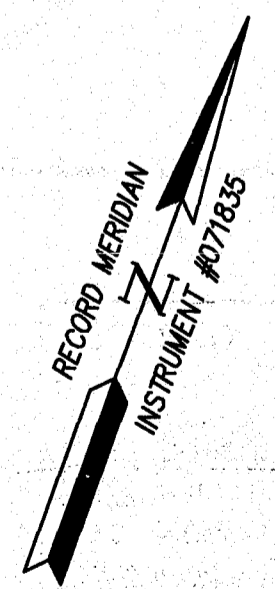
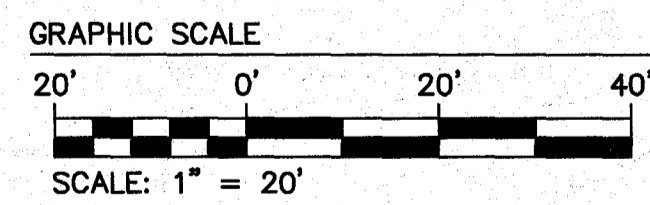
Project Contacts: SJB / CMA  
 Project Number: W10594-00  
 Scale: 1" = 20'  
 Date: 02-26-2021  
 Sheet Number  
**9 OF 13**

REFER TO SHEETS 1 THRU 6 FOR PLAT INFORMATION



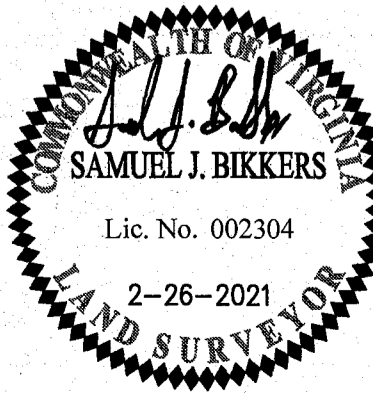
**LEGEND:**

- IRF = IRON ROD FOUND
- "P.K." NF = "P.K." NAIL FOUND
- [Concrete Pattern] CONCRETE SURFACE
- [Brick Pattern] BRICK PAVER SURFACE
- C.E. = COMMON ELEMENT
- [Hatched Pattern] = (L.C.E.) LIMITED COMMON ELEMENT



13	Large Plat(s) Recorded here with as #	211058
Rev.	Date	

City of Williamsburg & County of James City  
 Circuit Court: This PLAT was recorded on March 29, 2021  
 at 3:13 AM PM PB PG  
 Document # 211058  
 MONA A. FOLEY, CLERK  
 Clerk



**AES**  
 CONSULTING ENGINEERS  
 Hampton Roads | Central Virginia | Middle Peninsula  
 5248 Olde Towne Road, Suite 1  
 Williamsburg, Virginia 23188  
 Phone: (757) 253-0040  
 Fax: (757) 220-8994  
 www.aesva.com

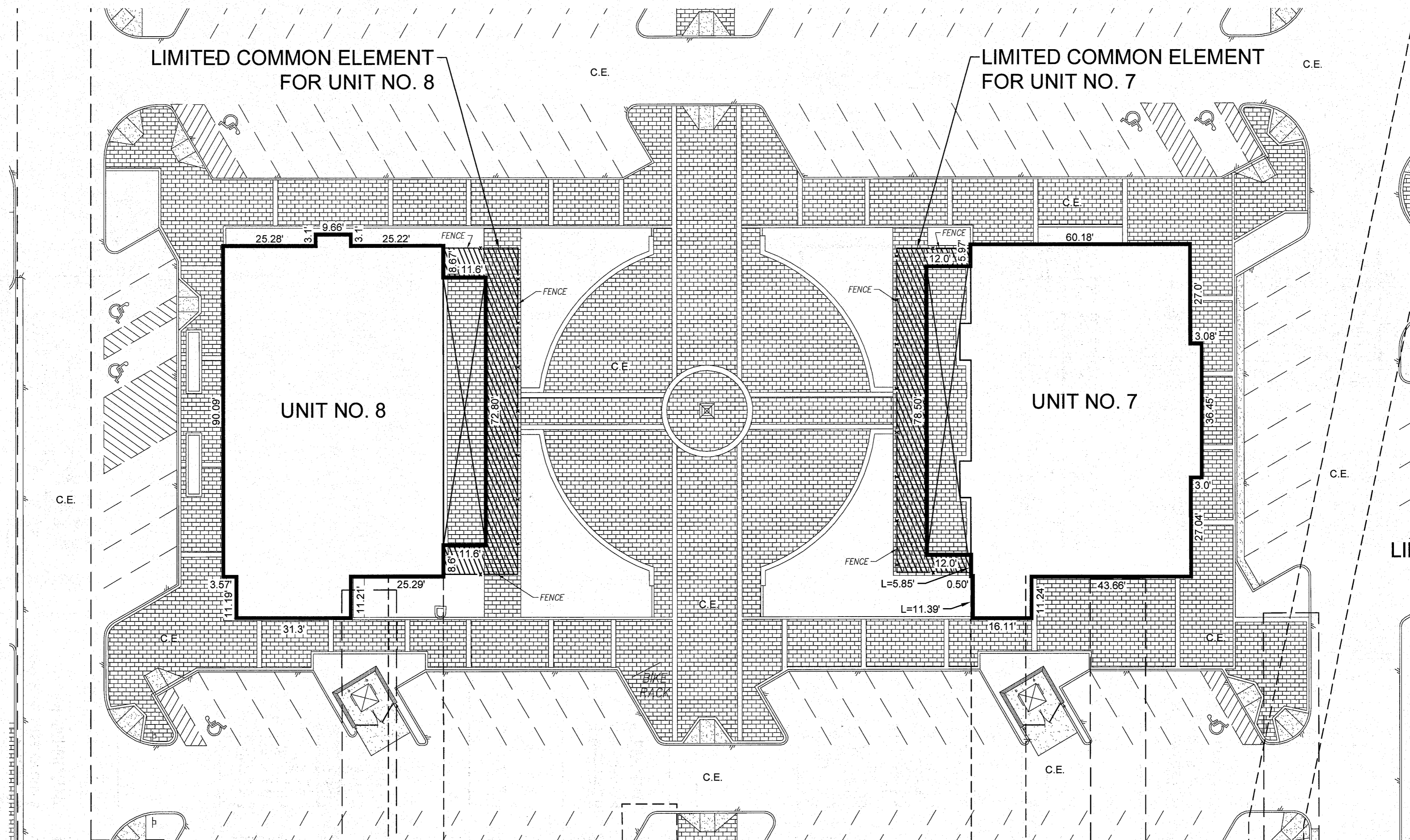
**EXHIBIT D**  
 CONDOMINIUM PLATS SHOWING  
 SUBMITTED LAND, IMPROVEMENTS AND EXISTING EASEMENTS  
**HIGH STREET CONDOMINIUM**  
 CITY OF WILLIAMSBURG VIRGINIA

Project Contacts:	SJB / CMA
Project Number:	W10594-00
Scale:	1" = 20'
Date:	02-26-2021
Sheet Number	<b>10 OF 13</b>

S:\058\211058 - Shops at High Street\01 - Surveying Services\Survey\Plan\W10594-00\_Condoplat.dwg, 3/29/2021 9:01:00 AM, mwa

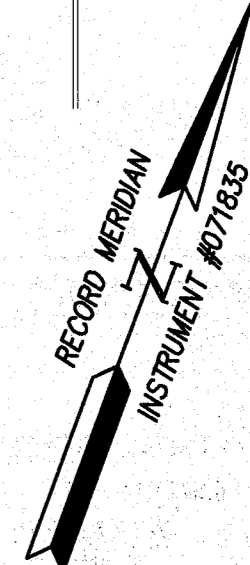
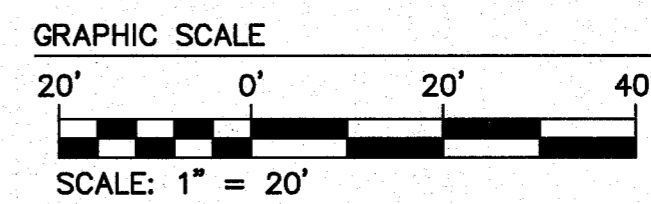


REFER TO SHEETS 1 THRU 6 FOR PLAT INFORMATION



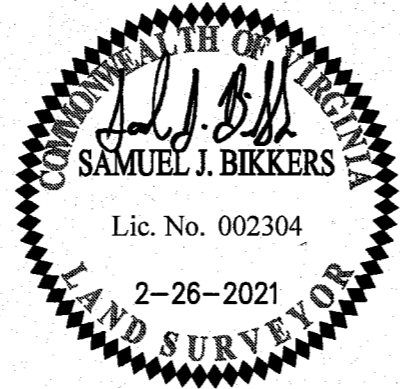
**LEGEND:**

- IRF = IRON ROD FOUND
- "P.K." NF = "P.K." NAIL FOUND
- [Hatched Box] CONCRETE SURFACE
- [Cross-hatched Box] BRICK PAVER SURFACE
- C.E. = COMMON ELEMENT
- [Diagonal Hatched Box] = (L.C.E.) LIMITED COMMON ELEMENT



13	Large Plat(s) Recorded herewith as # 211058
Rev.	Date

City of Williamsburg & County of James City  
 Circuit Court: This PLAT was recorded on March 29, 2021  
 at 3:13 AM/PM PB PG  
 Document # 211058  
 MONA A. FOLEY, CLERK  
 \_\_\_\_\_ Clerk

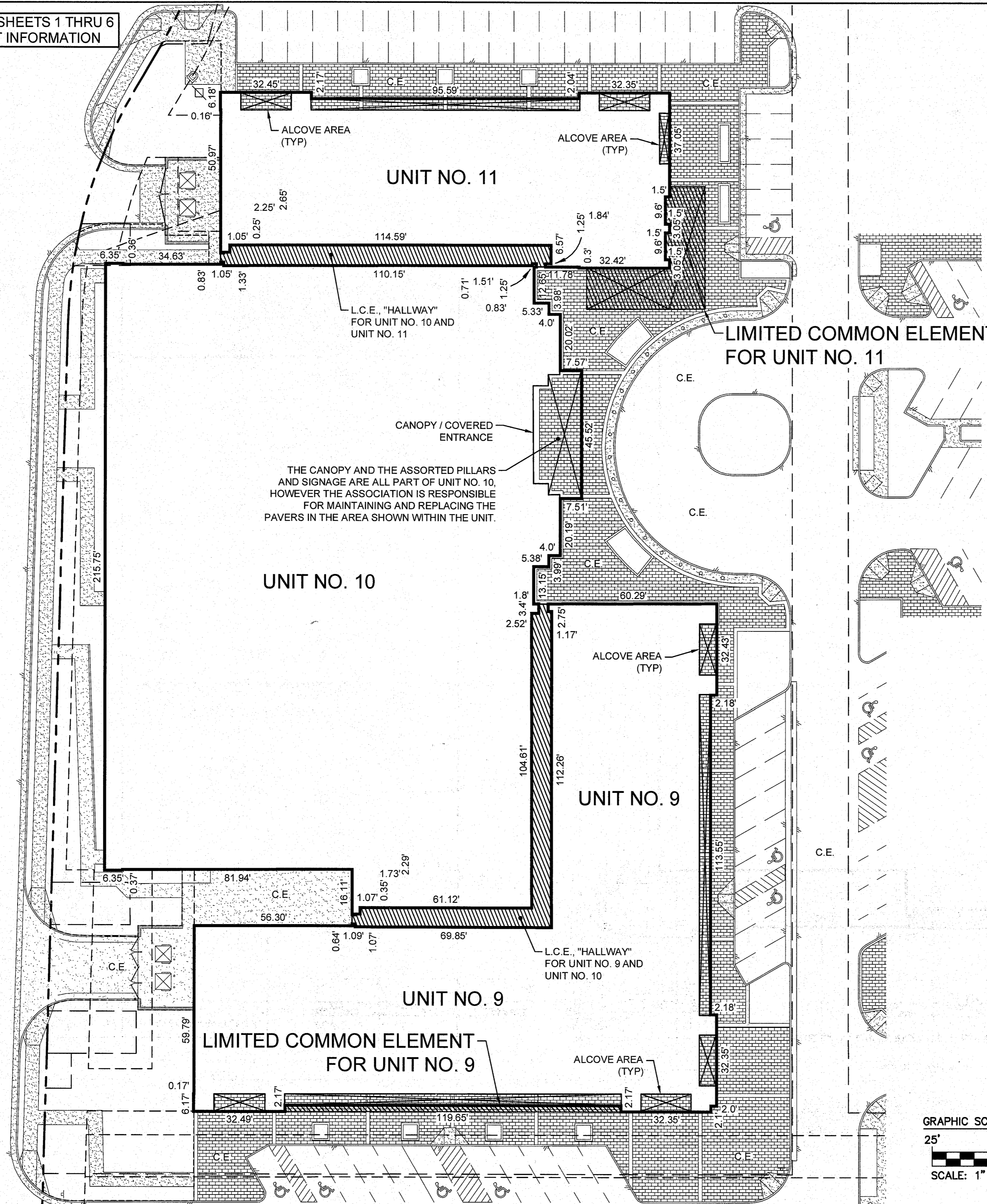



**AES**  
 CONSULTING ENGINEERS  
 Hampton Roads | Central Virginia | Middle Peninsula  
 5248 Olde Towne Road, Suite 1  
 Williamsburg, Virginia 23188  
 Phone: (757) 253-0040  
 Fax: (757) 220-8994  
 www.aesva.com

**EXHIBIT D**  
 CONDOMINIUM PLATS SHOWING  
 SUBMITTED LAND, IMPROVEMENTS AND EXISTING EASEMENTS  
**HIGH STREET CONDOMINIUM**  
 CITY OF WILLIAMSBURG VIRGINIA

Project Contacts:	SJB / CMA
Project Number:	W10594-00
Scale:	1" = 20'
Date:	02-26-2021
Sheet Number	11 OF 13

REFER TO SHEETS 1 THRU 6 FOR PLAT INFORMATION



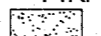
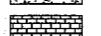
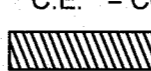
**NOTE:**  
 AREAS DESIGNATED AS  ARE RECESSED STOREFRONTS AND ENTRANCE ALCOVES AND ARE PART OF OF UNIT NO. 9 AND PART OF UNIT NO. 11 RESPECTFULLY, HOWEVER THE ASSOCIATION IS RESPONSIBLE FOR MAINTAINING AND REPLACING THE PAVERS IN THE AREAS DESIGNATED AS SUCH.

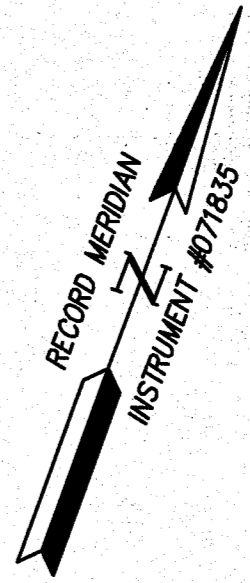
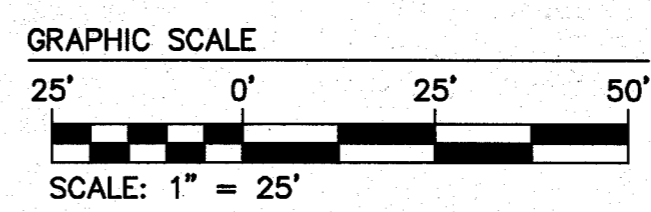
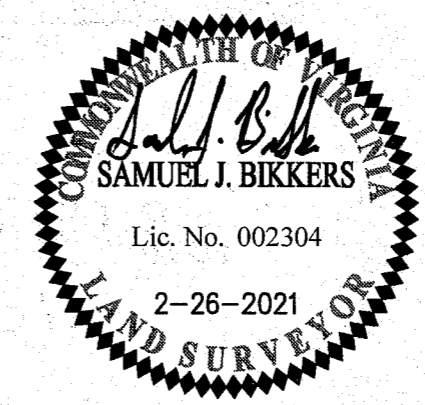
Revised By	Description
13	Large Format Plat(s) Recorded herewith as # 211058

City of Williamsburg & County of James City  
 Circuit Court; This PLAT was recorded on March 29, 2021  
 at 3:13 AM (PM) PB PG  
 Document # 211058  
 MONA A. FOLEY, CLERK  
*Mon A Foley*, Clerk

5248 Olde Towne Road, Suite 1  
 Williamsburg, Virginia 23188  
 Phone: (757) 253-0040  
 Fax: (757) 220-8994  
 www.aesva.com

**AES**  
 CONSULTING ENGINEERS  
 Hampton Roads | Central Virginia | Middle Peninsula

**LEGEND:**  
 IRF = IRON ROD FOUND  
 "P.K." NF = "P.K." NAIL FOUND  
 CONCRETE SURFACE  
 BRICK PAVER SURFACE  
 C.E. = COMMON ELEMENT  
 = (L.C.E.) LIMITED COMMON ELEMENT

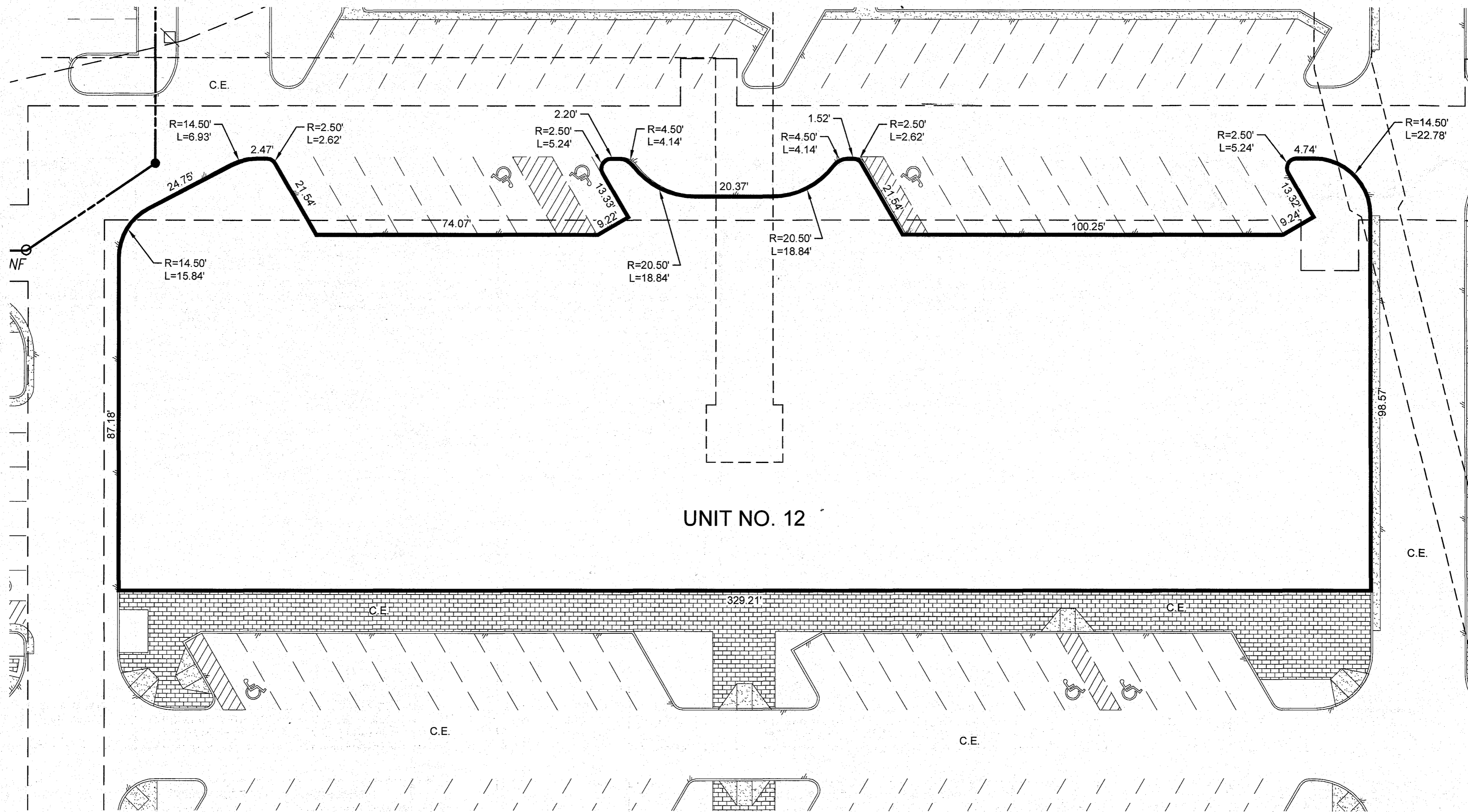


**EXHIBIT D**  
 CONDOMINIUM PLATS SHOWING  
 SUBMITTED LAND, IMPROVEMENTS AND EXISTING EASEMENTS  
**HIGH STREET CONDOMINIUM**  
 VIRGINIA  
 CITY OF WILLIAMSBURG

Project Contacts:	SJB / CMA
Project Number:	W10594-00
Scale:	Date:
1" = 25'	02-26-2021
Sheet Number	
<b>12 OF 13</b>	



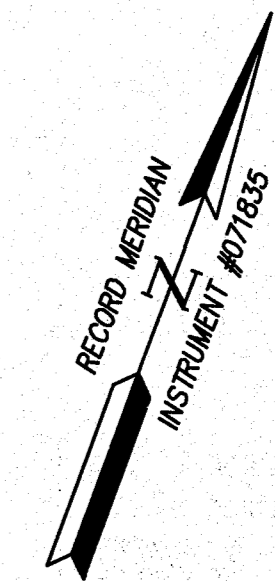
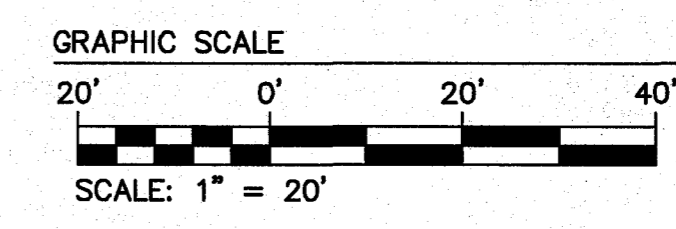
REFER TO SHEETS 1 THRU 6  
FOR PLAT INFORMATION



UNIT NO. 12

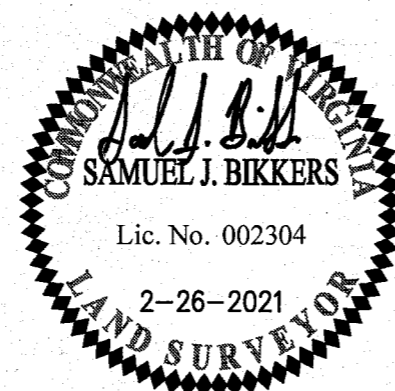
**LEGEND:**

- IRF = IRON ROD FOUND
- "P.K." NF = "P.K." NAIL FOUND
- [Concrete Pattern] CONCRETE SURFACE
- [Brick Pattern] BRICK PAVER SURFACE
- C.E. = COMMON ELEMENT
- [Hatched Pattern] = (L.C.E.) LIMITED COMMON ELEMENT



13	Large/Small Plat(s) Recorded herewith as # 211058
Rev.	Date

City of Williamsburg & County of James City  
Circuit Court: This PLAT was recorded on March 29, 2021  
at 3:13 AM/PM PB PG  
Document # 211058  
MONA A. FOLEY, CLERK  
Mona A. Foley, Clerk



**AES**  
CONSULTING ENGINEERS

5248 Olde Towne Road, Suite 1  
Williamsburg, Virginia 23188  
Phone: (757) 253-0040  
Fax: (757) 220-8994  
www.aesva.com

Hampton Roads | Central Virginia | Middle Peninsula

EXHIBIT D  
CONDOMINIUM PLATS SHOWING  
SUBMITTED LAND, IMPROVEMENTS AND EXISTING EASEMENTS  
**HIGH STREET CONDOMINIUM**

CITY OF WILLIAMSBURG VIRGINIA

Project Contacts:	SJB / CMA
Project Number:	W10594-00
Scale:	Date:
1" = 20'	02-26-2021
Sheet Number	
<b>13 OF 13</b>	