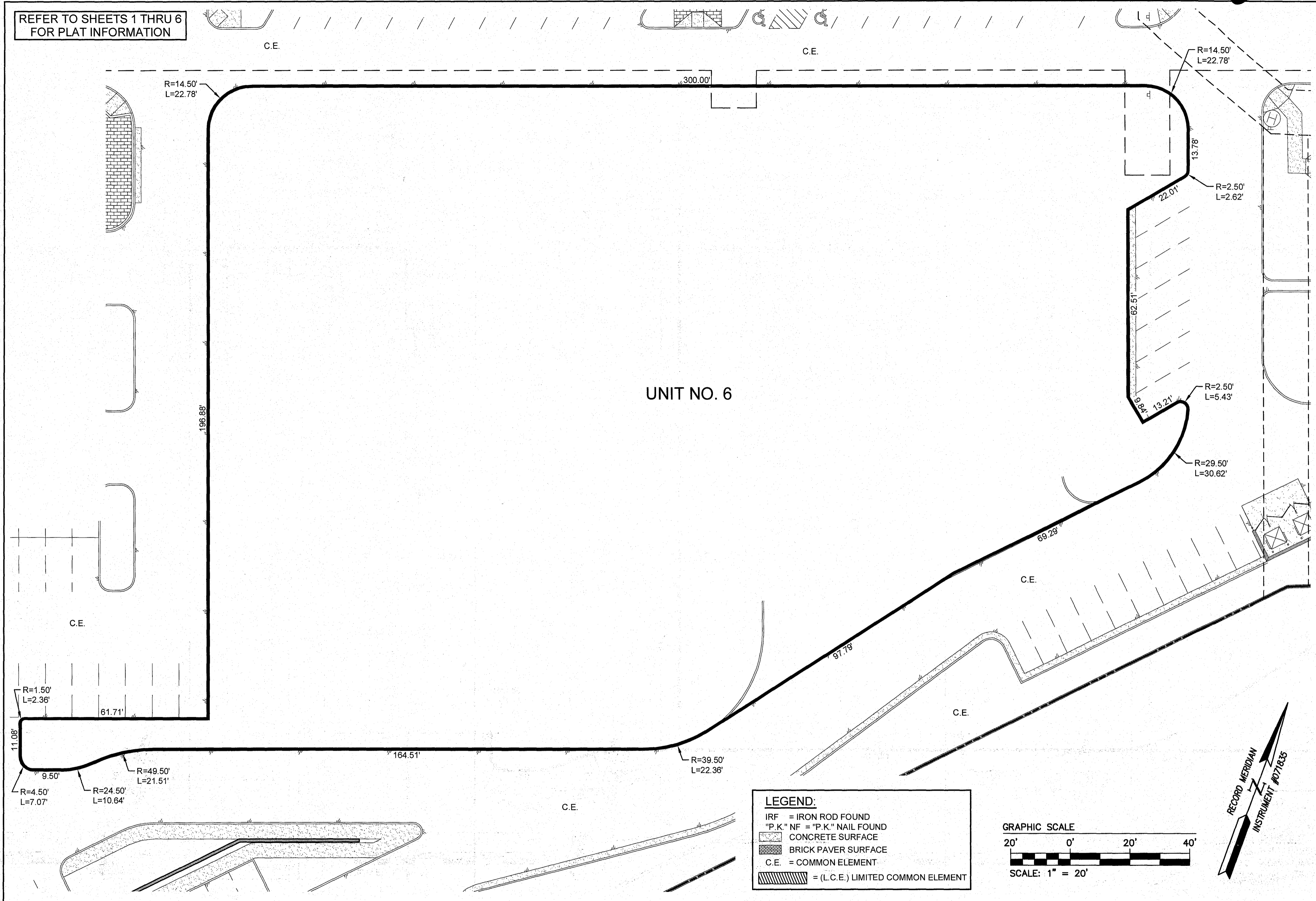


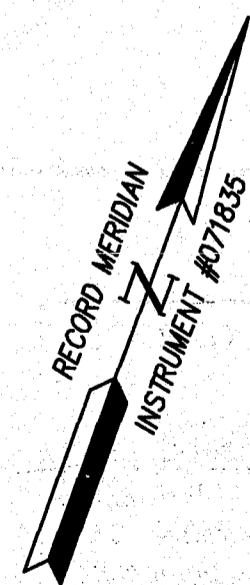
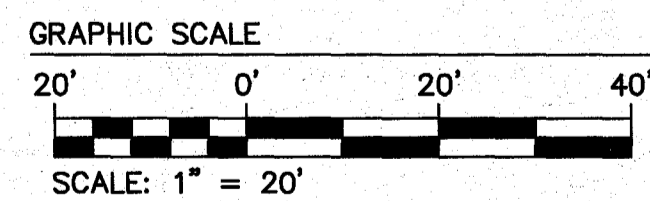
REFER TO SHEETS 1 THRU 6 FOR PLAT INFORMATION



UNIT NO. 6

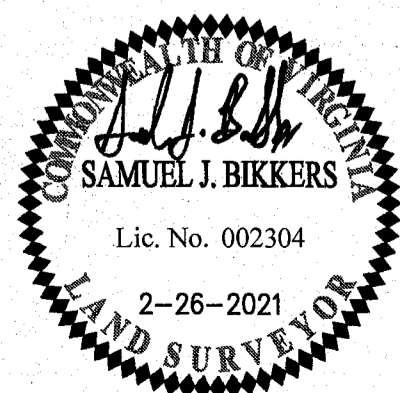
LEGEND:

- IRF = IRON ROD FOUND
- "P.K." NF = "P.K." NAIL FOUND
- [Pattern] CONCRETE SURFACE
- [Pattern] BRICK PAVER SURFACE
- C.E. = COMMON ELEMENT
- [Pattern] = (L.C.E.) LIMITED COMMON ELEMENT



13	Large Plat(s) Recorded here with as # 211058
Rev.	Date

City of Williamsburg & County of James City
 Circuit Court: This PLAT was recorded on March 29, 2021
 at 3:13 AM PM PB PG
 Document # 211058
 MONA A. FOLEY, CLERK
 Clerk



AES
 CONSULTING ENGINEERS
 Hampton Roads | Central Virginia | Middle Peninsula
 5248 Olde Towne Road, Suite 1
 Williamsburg, Virginia 23188
 Phone: (757) 253-0040
 Fax: (757) 220-8994
 www.aesva.com

EXHIBIT D
 CONDOMINIUM PLATS SHOWING
 SUBMITTED LAND, IMPROVEMENTS AND EXISTING EASEMENTS
HIGH STREET CONDOMINIUM
 CITY OF WILLIAMSBURG VIRGINIA

Project Contacts:	SJB / CMA
Project Number:	W10594-00
Scale:	Date:
1" = 20'	02-26-2021
Sheet Number	
10 OF 13	

S:\058\211058 - Shops at High Street\01 - Surveying Services\Survey\Plan\W10594-00_Condoplat.dwg, 3/29/2021 9:01:00 AM, mwa