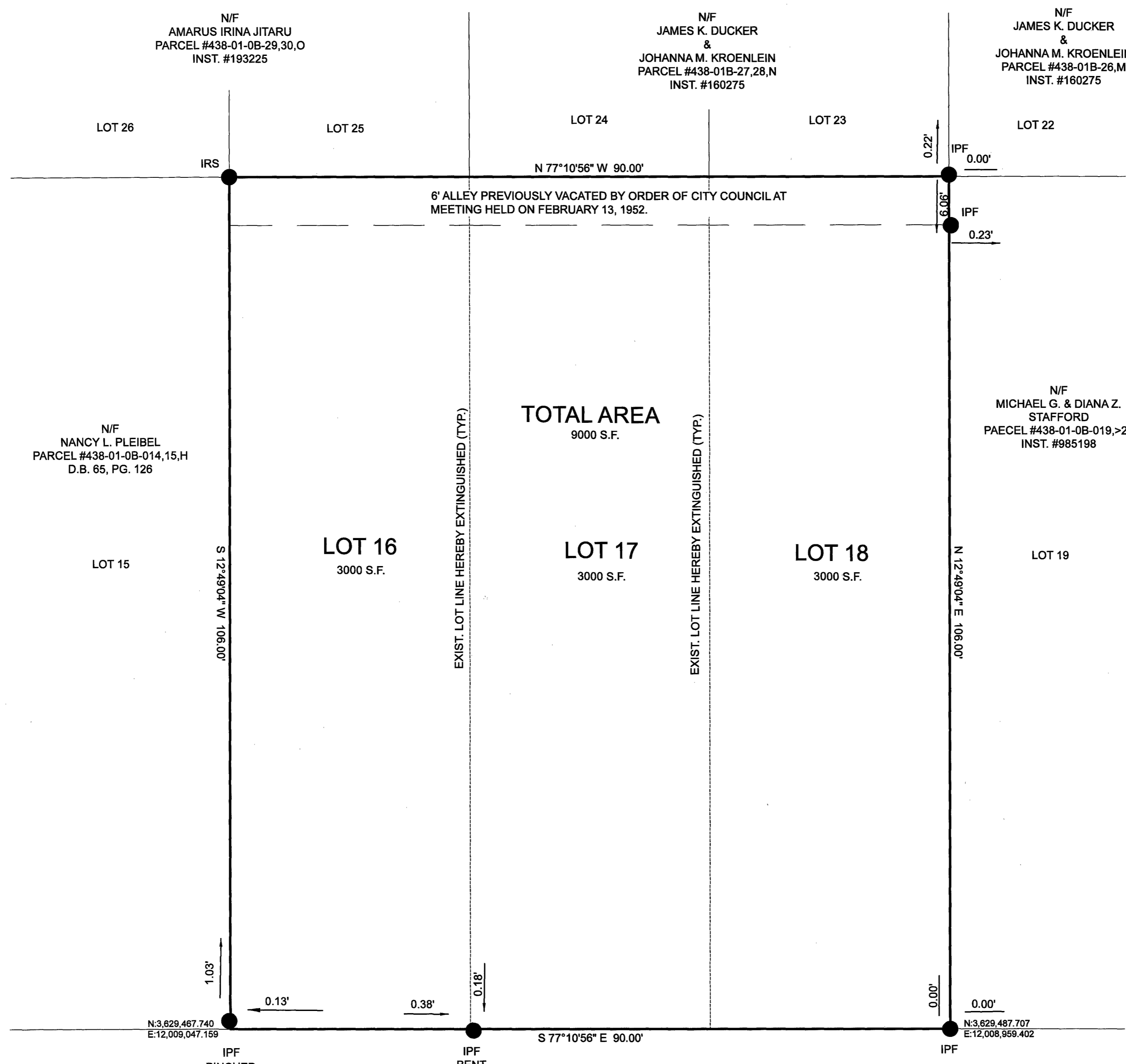


210664



VIA STATE GRID - NAD83 - SOUTH ZONE

PLAT SHOWING  
 VACATION OF LOT LINES  
 LOTS 16, 17, 18  
 BLOCK B  
 CAPITAL HEIGHTS  
 P.B. 2, PG. 31

CITY OF WILLIAMSBURG, VIRGINIA  
 DATE: FEBRUARY 10, 2020 SCALE: 1"=10'



2 Large/Small Plat(s) Recorded  
 herewith as # 210664

City of Williamsburg & County of James City  
 Circuit Court: This PLAT was recorded on  
 February 24, 2021  
 at 2:08 AM PM PB PG  
 Document # 210664  
 MONA A. FOLEY, CLERK  
 Clerk



156 STRAWBERRY PLAINS ROAD, SUITE D  
 WILLIAMSBURG, VIRGINIA 23188  
 (757) 345-2866 - (757) 345-2877 (FAX)