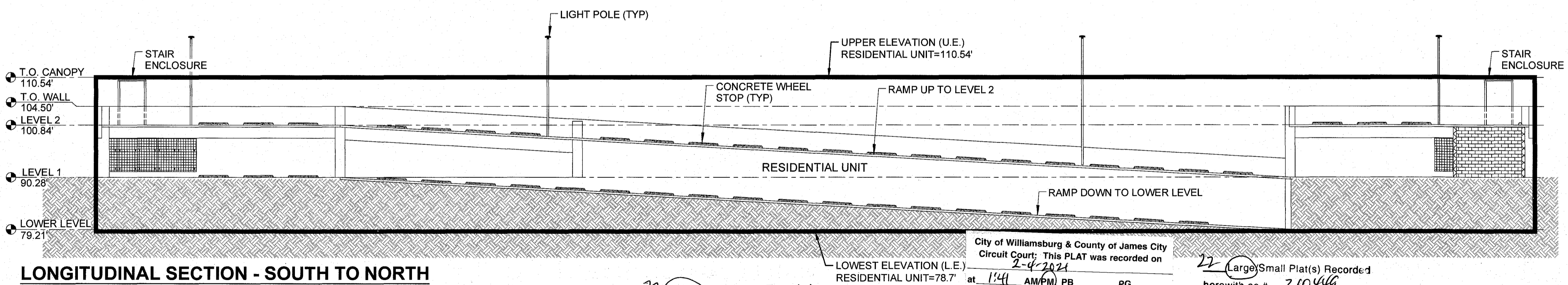
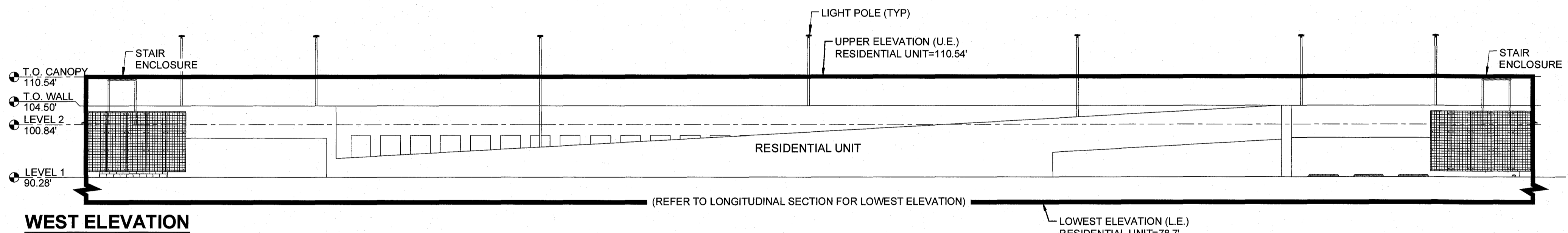
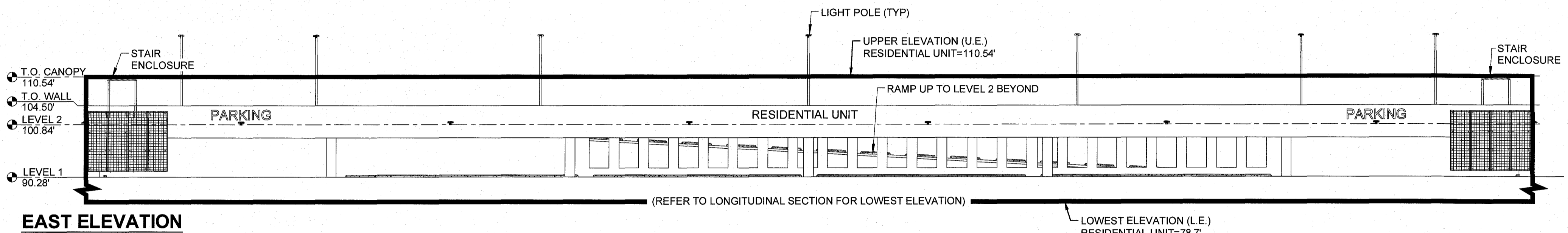
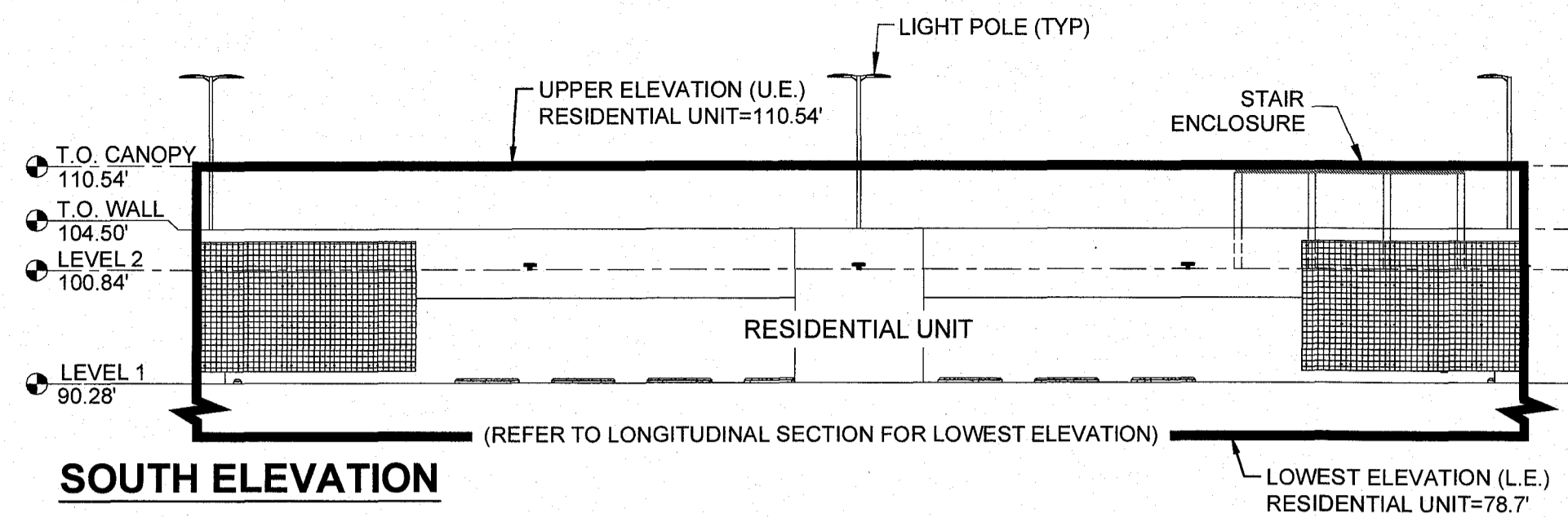
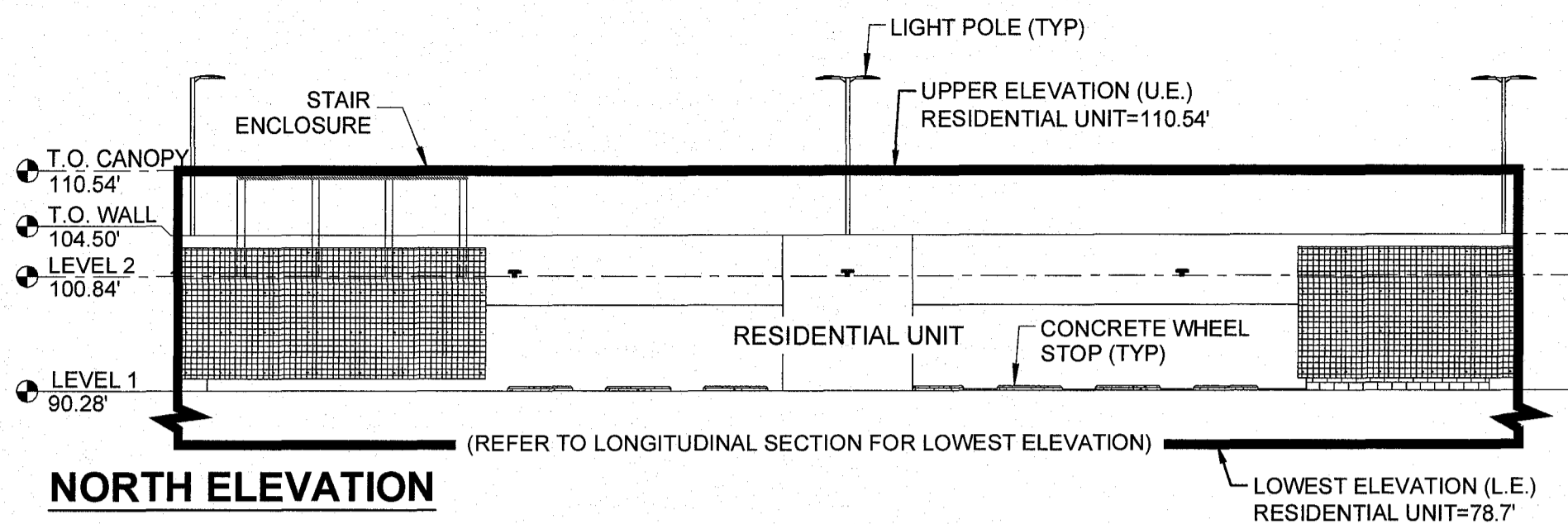


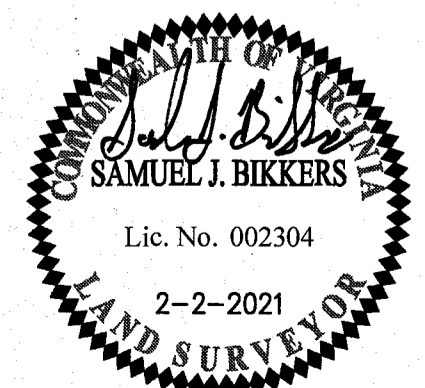
210002257 210449



22 Large/Small Plat(s) Recorded
 herewith as # 210002257

City of Williamsburg & County of James City
 Circuit Court: This PLAT was recorded on
 2-4-2021 at 1:44 AM/PM PB PG
 Document # 210449
 MONA A. FOLEY, CLERK
 herewith as # 210449

SURVEYOR'S CERTIFICATE
 I, SAMUEL J. BIKKERS, A DULY LICENSED LAND SURVEYOR IN THE COMMONWEALTH OF VIRGINIA, DO HEREBY CERTIFY THAT THESE PLANS ARE ACCURATE AND COMPLY WITH SECTION 55-1-1920(B) OF THE VIRGINIA CONDOMINIUM ACT AS AMENDED, AND THAT ALL UNITS OR PORTIONS OF THE SUBMITTED UNITS SHOWN HEREON ARE SUBSTANTIALLY COMPLETE.
 Samuel J. Bickers
 SAMUEL J. BIKKERS, L.S. #002304
 2-2-2021
 DATE



City of Williamsburg & County of James City
 Circuit Court: This PLAT was recorded on
 2-4-2021 at 1:55 AM/PM PB PG
 Document # 210002257
 MONA A. FOLEY, CLERK
 Clerk

EXHIBIT C-3
 CONDOMINIUM PLANS SHOWING
 SECTION AND ELEVATION VIEWS
 PARKING GARAGE
MIDTOWN ROW COMMERCIAL CONDOMINIUM
 CITY OF WILLIAMSBURG VIRGINIA

Project Contacts: SJB / CMA
 Project Number: W09042-12
 Scale: N/A Date: 02-02-2021
 Sheet Number
21 OF 22