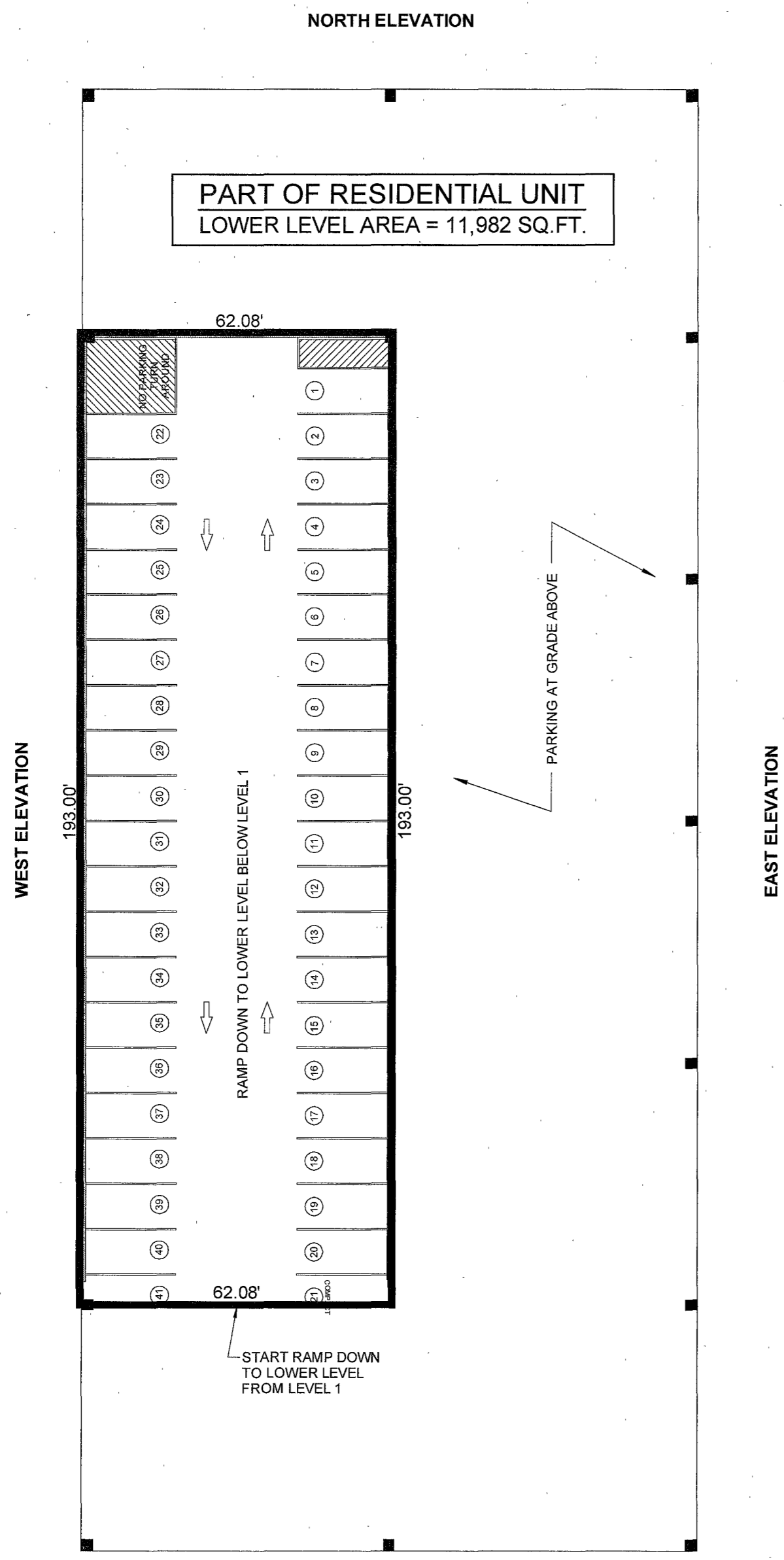


210002257 210449

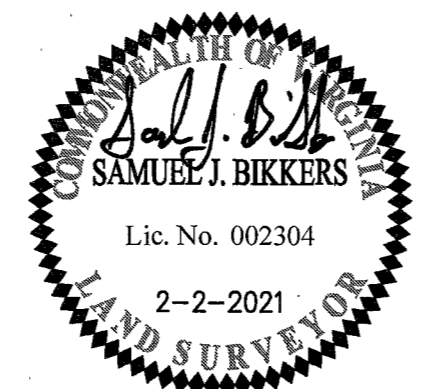


PART OF RESIDENTIAL UNIT
LOWER LEVEL AREA = 11,982 SQ.FT.

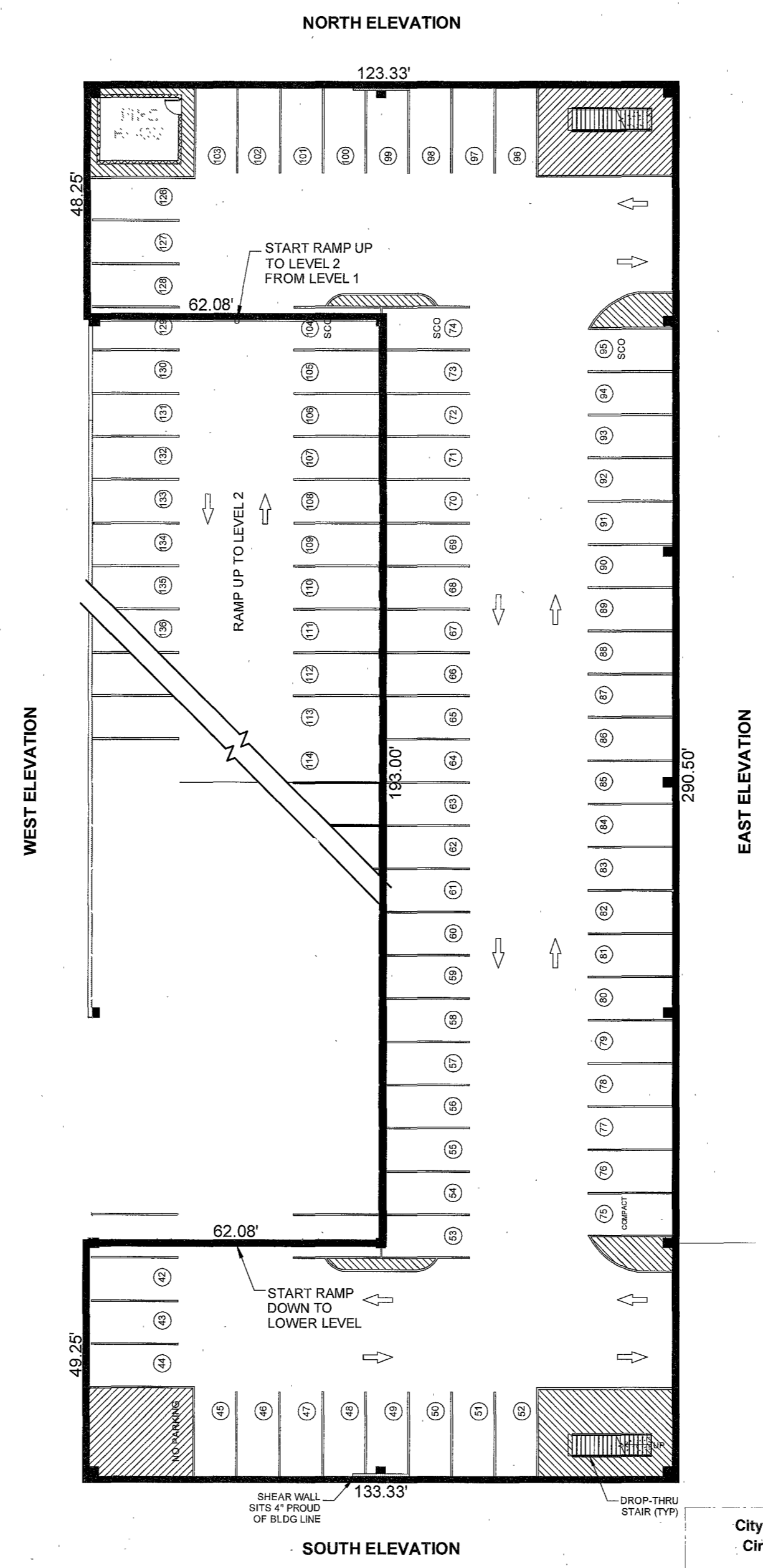
LOWER LEVEL

NOTE: PORTIONS OF THE BUILDINGS AND OTHER IMPROVEMENTS SHOWN ON THESE CONDOMINIUM PLATS AND PLANS WITHIN THE UNITS ARE NOT YET COMPLETE AND ARE HEREBY NOTED AS SUCH (IN ACCORDANCE WITH §55.1-1920(A) OF THE VIRGINIA CONDOMINIUM ACT). SUCH PORTIONS OF THE BUILDINGS AND OTHER IMPROVEMENTS SHOWN HEREON ARE BASED UPON CURRENT ARCHITECTURAL PLANS, SITE PLANS, PRELIMINARY PLANS AND/OR OTHER DEVELOPMENT PLANS. THE DIMENSIONS AND AREAS OF THE UNITS SHOWN ON THESE CONDOMINIUM PLATS AND PLANS ARE BASED ON THE UNIT BOUNDARIES AS DESCRIBED IN THE DECLARATION, AND REFLECT THE CURRENT DIMENSIONS OF THE UNITS.

SURVEYOR'S CERTIFICATE
I, SAMUEL J. BIKKERS, A DULY LICENSED LAND SURVEYOR IN THE COMMONWEALTH OF VIRGINIA, DO HEREBY CERTIFY THAT THESE PLANS ARE ACCURATE AND COMPLY WITH SECTION 55.1-1920(B) OF THE VIRGINIA CONDOMINIUM ACT AS AMENDED, AND THAT ALL UNITS OR PORTIONS OF THE SUBMITTED UNITS SHOWN HEREON ARE SUBSTANTIALLY COMPLETE.
SAMUEL J. BIKKERS, L.S. #002304
2-2-2021
DATE



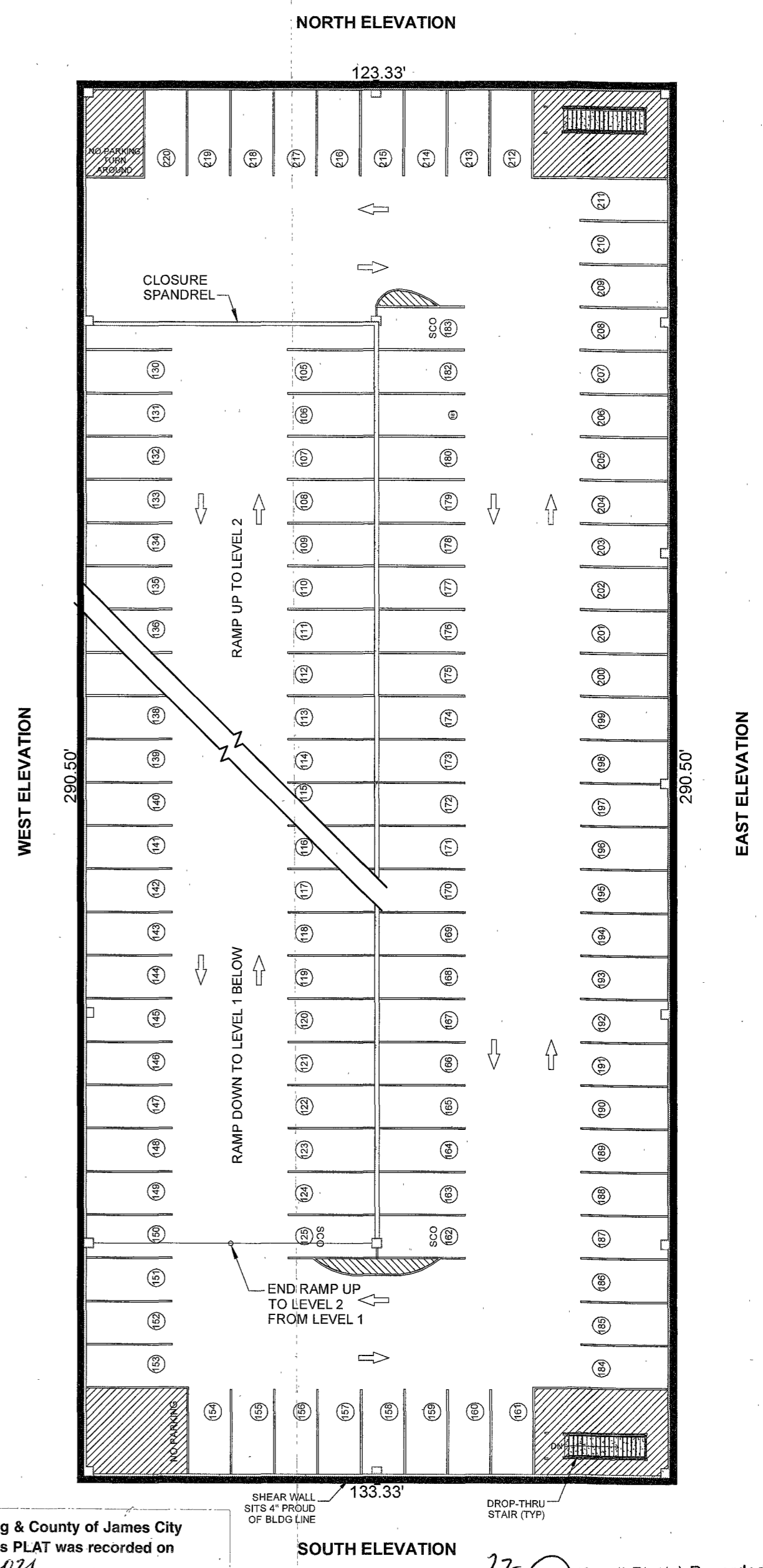
PART OF RESIDENTIAL UNIT
LEVEL 1 AREA = 23,846 SQ.FT.



LEVEL 1 (GROUND FLOOR)

City of Williamsburg & County of James City
Circuit Court: This PLAT was recorded on 2-4-2021
at 1:55 AM/PM PB PG
Document # 210002257
MONA A. FOLEY, CLERK
Mona A. Foley, Clerk

PART OF RESIDENTIAL UNIT
LEVEL 2 AREA = 35,828 SQ.FT.



LEVEL 2

City of Williamsburg & County of James City
Circuit Court: This PLAT was recorded on 2-4-2021
at 1:40 AM/PM PB PG
Document # 210449
MONA A. FOLEY, CLERK
Mona A. Foley, Clerk

22 Large/Small Plat(s) Recorded herewith as # 210449

EXHIBIT C-2
CONDOMINIUM PLANS SHOWING UNITS AND DIMENSIONS
PARKING GARAGE
MIDTOWN ROW COMMERCIAL CONDOMINIUM
CITY OF WILLIAMSBURG VIRGINIA

Project Contacts: SJB / CMA
Project Number: W09042-12
Scale: N/A Date: 02-02-2021
Sheet Number
20 OF 22