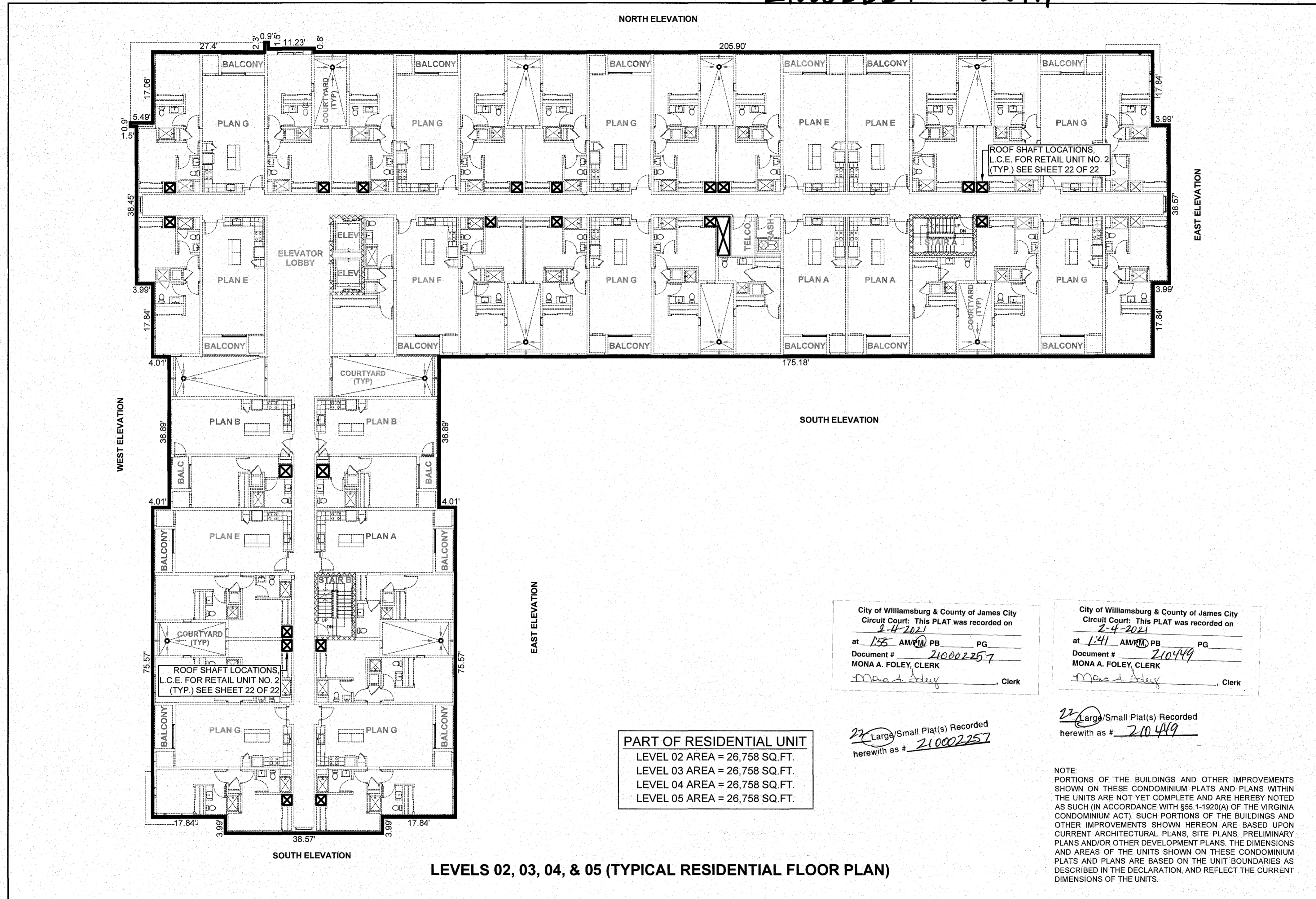


210002257 210449



**PART OF RESIDENTIAL UNIT**  
 LEVEL 02 AREA = 26,758 SQ.FT.  
 LEVEL 03 AREA = 26,758 SQ.FT.  
 LEVEL 04 AREA = 26,758 SQ.FT.  
 LEVEL 05 AREA = 26,758 SQ.FT.

City of Williamsburg & County of James City  
 Circuit Court: This PLAT was recorded on  
 2-4-2021  
 at 1:55 AM/PM PB PG  
 Document # 210002257  
 MONA A. FOLEY, CLERK  
*Mona A. Foley*, Clerk

City of Williamsburg & County of James City  
 Circuit Court: This PLAT was recorded on  
 2-4-2021  
 at 1:41 AM/PM PB PG  
 Document # 210449  
 MONA A. FOLEY, CLERK  
*Mona A. Foley*, Clerk

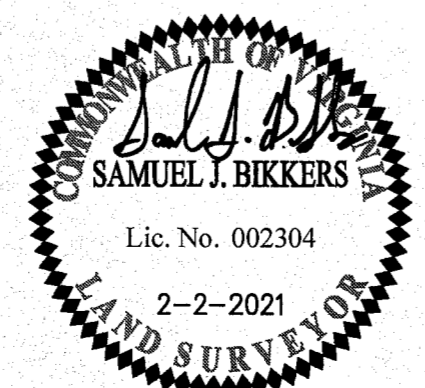
22 Large/Small Plat(s) Recorded  
 herewith as # 210002257

22 Large/Small Plat(s) Recorded  
 herewith as # 210449

NOTE:  
 PORTIONS OF THE BUILDINGS AND OTHER IMPROVEMENTS  
 SHOWN ON THESE CONDOMINIUM PLATS AND PLANS WITHIN  
 THE UNITS ARE NOT YET COMPLETE AND ARE HEREBY NOTED  
 AS SUCH (IN ACCORDANCE WITH §55.1-1920(A) OF THE VIRGINIA  
 CONDOMINIUM ACT). SUCH PORTIONS OF THE BUILDINGS AND  
 OTHER IMPROVEMENTS SHOWN HEREON ARE BASED UPON  
 CURRENT ARCHITECTURAL PLANS, SITE PLANS, PRELIMINARY  
 PLANS AND/OR OTHER DEVELOPMENT PLANS. THE DIMENSIONS  
 AND AREAS OF THE UNITS SHOWN ON THESE CONDOMINIUM  
 PLATS AND PLANS ARE BASED ON THE UNIT BOUNDARIES AS  
 DESCRIBED IN THE DECLARATION, AND REFLECT THE CURRENT  
 DIMENSIONS OF THE UNITS.

**LEVELS 02, 03, 04, & 05 (TYPICAL RESIDENTIAL FLOOR PLAN)**

**SURVEYOR'S CERTIFICATE**  
 I, SAMUEL J. BIKKERS, A DULY LICENSED LAND SURVEYOR IN THE COMMONWEALTH OF VIRGINIA, DO HEREBY CERTIFY THAT THESE PLANS ARE ACCURATE AND COMPLY WITH SECTION 55.1-1920(B) OF THE VIRGINIA CONDOMINIUM ACT AS AMENDED, AND THAT ALL UNITS OR PORTIONS OF THE SUBMITTED UNITS SHOWN HEREON ARE SUBSTANTIALLY COMPLETE.  
*Samuel J. Bickers*  
 SAMUEL J. BIKKERS, L.S. #002304  
 2-2-2021  
 DATE



**AES**  
 CONSULTING ENGINEERS  
 5248 Olde Towne Road, Suite 1  
 Williamsburg, Virginia 23188  
 Phone: (757) 253-0040  
 www.aesva.com  
 Hampton Roads | Central Virginia | Middle Peninsula

**EXHIBIT C-2**  
 CONDOMINIUM PLANS SHOWING  
 UNITS AND DIMENSIONS  
 BUILDING 4  
**MIDTOWN ROW COMMERCIAL CONDOMINIUM**  
 CITY OF WILLIAMSBURG VIRGINIA

Project Contacts: SJB / CMA  
 Project Number: W09042-12  
 Scale: N/A Date: 02-02-2021  
 Sheet Number  
**17 OF 22**