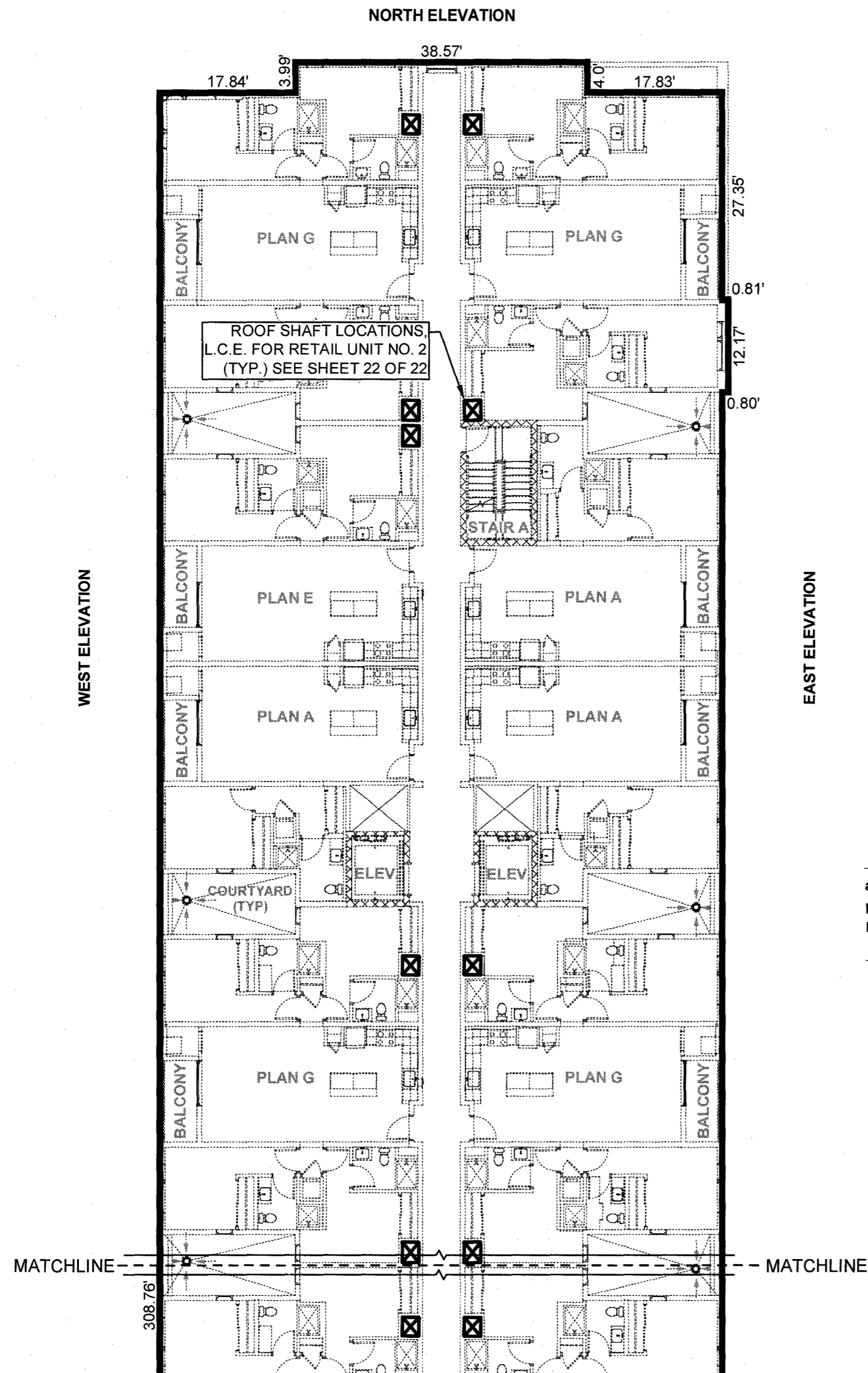
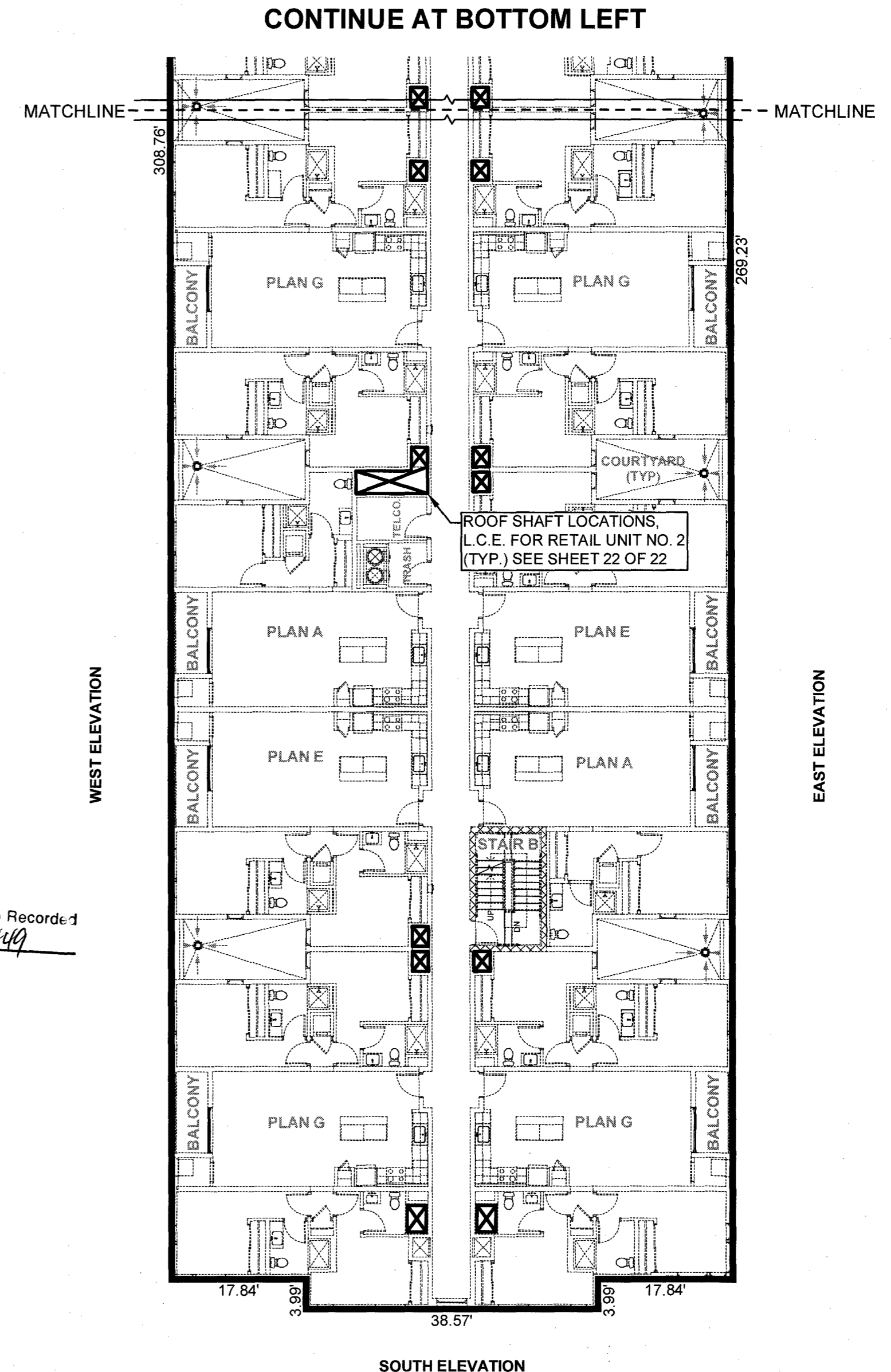


210002257

210449



LEVELS 02, 03, 04, & 05 (TYPICAL RESIDENTIAL FLOOR PLAN) CONTINUED FROM TOP RIGHT



LEVELS 02, 03, 04, & 05 (TYPICAL RESIDENTIAL FLOOR PLAN)

City of Williamsburg & County of James City
 Circuit Court: This PLAT was recorded on
 2-4-2021
 at 1:41 AM/PM, PB PG
 Document # 210449
 MONA A. FOLEY, CLERK
 Mon A Foley, Clerk

22 Large/Small Plat(s) Recorded
 herewith as # 210449

NOTE:
 PORTIONS OF THE BUILDINGS AND OTHER IMPROVEMENTS SHOWN ON THESE CONDOMINIUM PLATS AND PLANS WITHIN THE UNITS ARE NOT YET COMPLETE AND ARE HEREBY NOTED AS SUCH (IN ACCORDANCE WITH §55.1-1920(A) OF THE VIRGINIA CONDOMINIUM ACT). SUCH PORTIONS OF THE BUILDINGS AND OTHER IMPROVEMENTS SHOWN HEREON ARE BASED UPON CURRENT ARCHITECTURAL PLANS, SITE PLANS, PRELIMINARY PLANS AND/OR OTHER DEVELOPMENT PLANS. THE DIMENSIONS AND AREAS OF THE UNITS SHOWN ON THESE CONDOMINIUM PLATS AND PLANS ARE BASED ON THE UNIT BOUNDARIES AS DESCRIBED IN THE DECLARATION, AND REFLECT THE CURRENT DIMENSIONS OF THE UNITS.

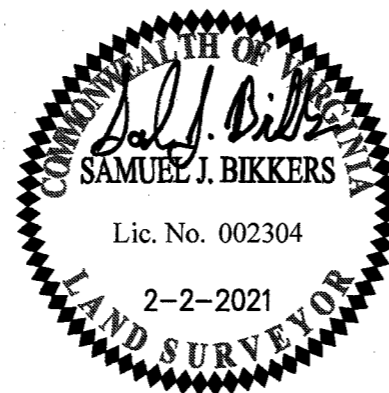
PART OF RESIDENTIAL UNIT
 LEVEL 02 AREA = 23,246 SQ.FT.
 LEVEL 03 AREA = 23,246 SQ.FT.
 LEVEL 04 AREA = 23,246 SQ.FT.
 LEVEL 05 AREA = 23,246 SQ.FT.

22 Large/Small Plat(s) Recorded
 herewith as # 210002257

SURVEYOR'S CERTIFICATE

I, SAMUEL J. BIKKERS, A DULY LICENSED LAND SURVEYOR IN THE COMMONWEALTH OF VIRGINIA, DO HEREBY CERTIFY THAT THESE PLANS ARE ACCURATE AND COMPLY WITH SECTION 55.1-1920(B) OF THE VIRGINIA CONDOMINIUM ACT AS AMENDED, AND THAT ALL UNITS OR PORTIONS OF THE SUBMITTED UNITS SHOWN HEREON ARE SUBSTANTIALLY COMPLETE.

Samuel J. Bickers
 SAMUEL J. BIKKERS, L.S. #002304
 2-2-2021
 DATE



City of Williamsburg & County of James City
 Circuit Court: This PLAT was recorded on
 2-4-2021
 at 1:55 AM/PM, PB PG
 Document # 210002257
 MONA A. FOLEY, CLERK
 Mon A Foley, Clerk

EXHIBIT C-2
CONDOMINIUM PLANS SHOWING
UNITS AND DIMENSIONS
BUILDING 3
MIDTOWN ROW COMMERCIAL CONDOMINIUM
 CITY OF WILLIAMSBURG VIRGINIA

| | |
|-----------------------------|------------------|
| Project Contacts: SJB / CMA | |
| Project Number: W09042-12 | |
| Scale: N/A | Date: 02-02-2021 |
| Sheet Number | |
| 13 OF 22 | |