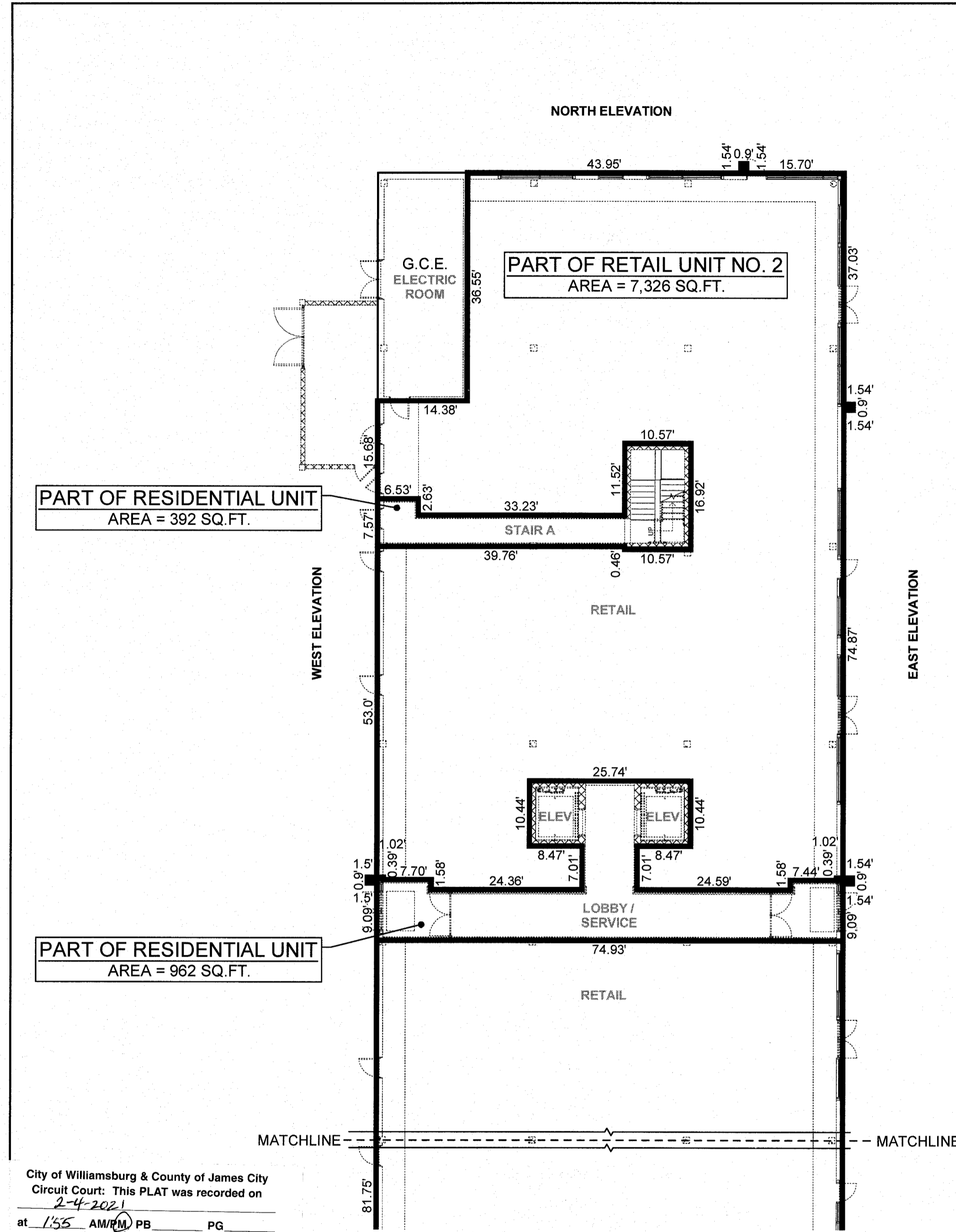


210002257

210449



City of Williamsburg & County of James City
 Circuit Court: This PLAT was recorded on
 2-4-2021
 at 1:55 AM/PM PB PG
 Document # 210002257
 MONA A. FOLEY, CLERK
Monica Foley, Clerk

22 Large/Small Plat(s) Recorded
 herewith as # 210002257

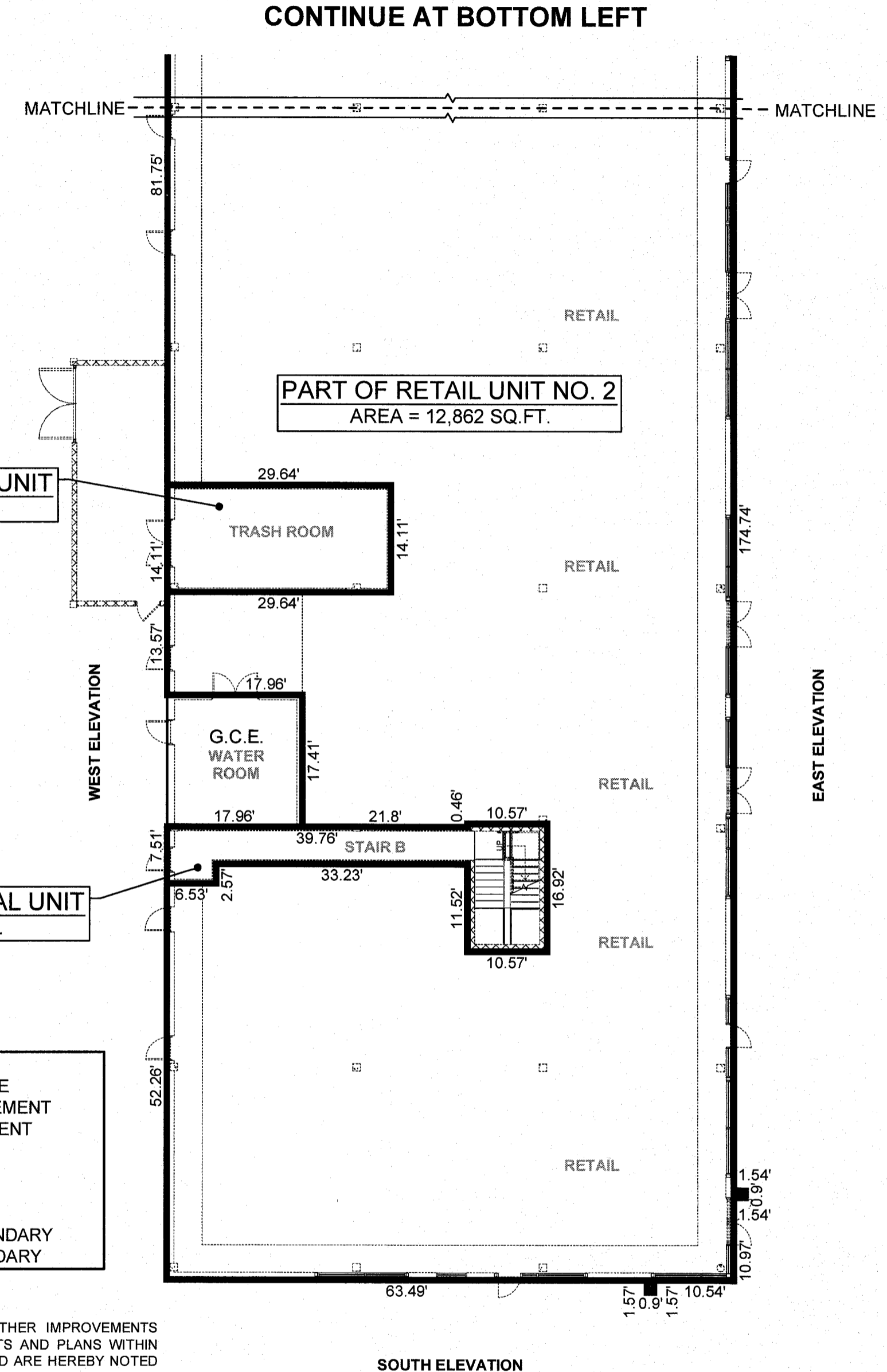
PART OF RESIDENTIAL UNIT
 AREA = 418 SQ.FT.

PART OF RESIDENTIAL UNIT
 AREA = 392 SQ.FT.

LEGEND:
 UNIT BOUNDARY LINE
 G.C.E. = GENERAL COMMON ELEMENT
 L.C.E. = LIMITED COMMON ELEMENT
 NO. = NUMBER
 R.U. = RETAIL UNIT
 RES. UNIT = RESIDENTIAL UNIT
 SQ.FT. = SQUARE FOOT
 L.E. = LOWEST ELEVATION BOUNDARY
 U.E. = UPPER ELEVATION BOUNDARY

NOTE:
 PORTIONS OF THE BUILDINGS AND OTHER IMPROVEMENTS SHOWN ON THESE CONDOMINIUM PLATS AND PLANS WITHIN THE UNITS ARE NOT YET COMPLETE AND ARE HEREBY NOTED AS SUCH (IN ACCORDANCE WITH §55.1-1920(A) OF THE VIRGINIA CONDOMINIUM ACT). SUCH PORTIONS OF THE BUILDINGS AND OTHER IMPROVEMENTS SHOWN HEREON ARE BASED UPON CURRENT ARCHITECTURAL PLANS, SITE PLANS, PRELIMINARY PLANS AND/OR OTHER DEVELOPMENT PLANS. THE DIMENSIONS AND AREAS OF THE UNITS SHOWN ON THESE CONDOMINIUM PLATS AND PLANS ARE BASED ON THE UNIT BOUNDARIES AS DESCRIBED IN THE DECLARATION, AND REFLECT THE CURRENT DIMENSIONS OF THE UNITS.

22 Large/Small Plat(s) Recorded
 herewith as # 210449



City of Williamsburg & County of James City
 Circuit Court: This PLAT was recorded on
 2-4-2021
 at 1:41 AM/PM PB PG
 Document # 210449
 MONA A. FOLEY, CLERK
Monica Foley, Clerk

**EXHIBIT C-2
 CONDOMINIUM PLANS SHOWING
 UNITS AND DIMENSIONS
 BUILDING 3
 MIDTOWN ROW COMMERCIAL CONDOMINIUM**

CITY OF WILLIAMSBURG VIRGINIA

Project Contacts: SJB / CMA	
Project Number: W09042-12	
Scale: N/A	Date: 02-02-2021
Sheet Number	
12 OF 22	

SURVEYOR'S CERTIFICATE
 I, SAMUEL J. BIKKERS, A DULY LICENSED LAND SURVEYOR IN THE COMMONWEALTH OF VIRGINIA, DO HEREBY CERTIFY THAT THESE PLANS ARE ACCURATE AND COMPLY WITH SECTION 55.1-1920(B) OF THE VIRGINIA CONDOMINIUM ACT AS AMENDED, AND THAT ALL UNITS OR PORTIONS OF THE SUBMITTED UNITS SHOWN HEREON ARE SUBSTANTIALLY COMPLETE.

Samuel J. Bickers
 SAMUEL J. BIKKERS, L.S. #002304

2-2-2021
 DATE

