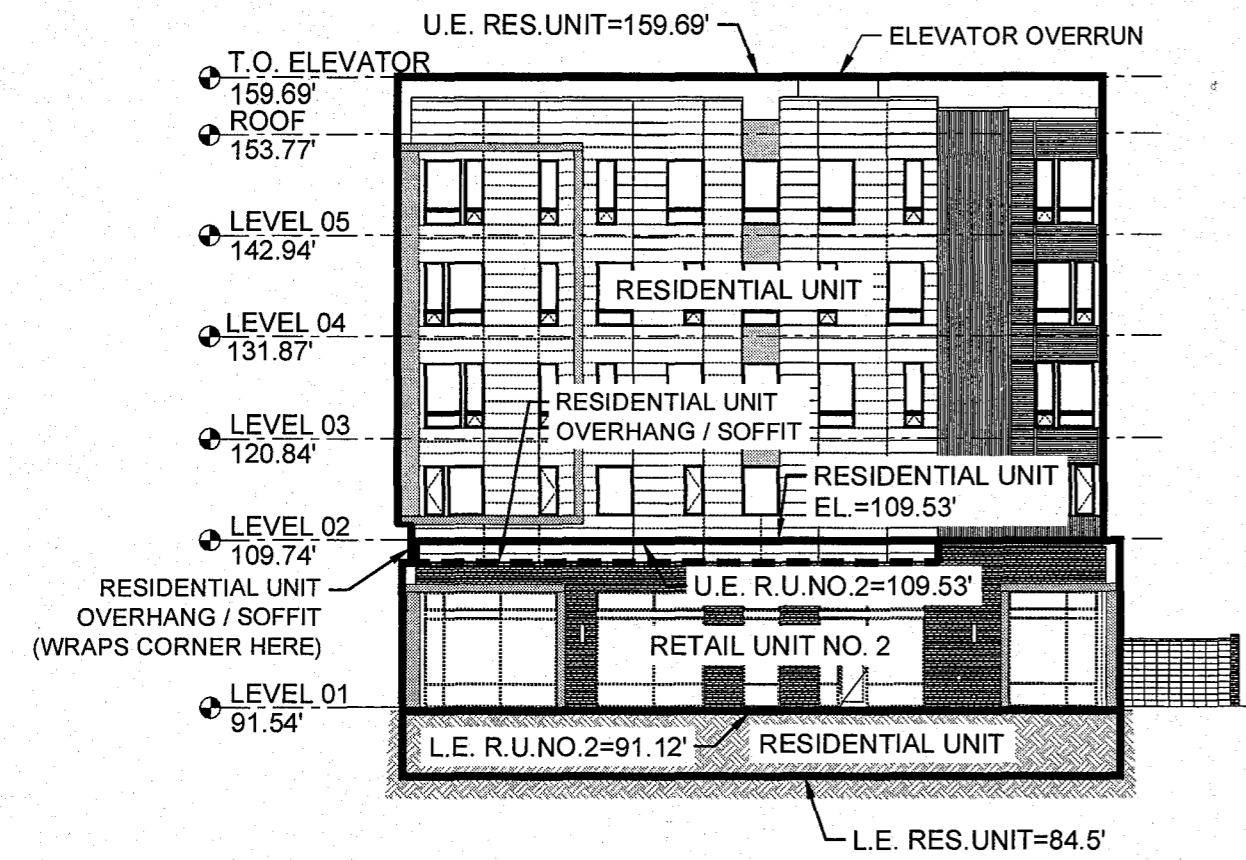
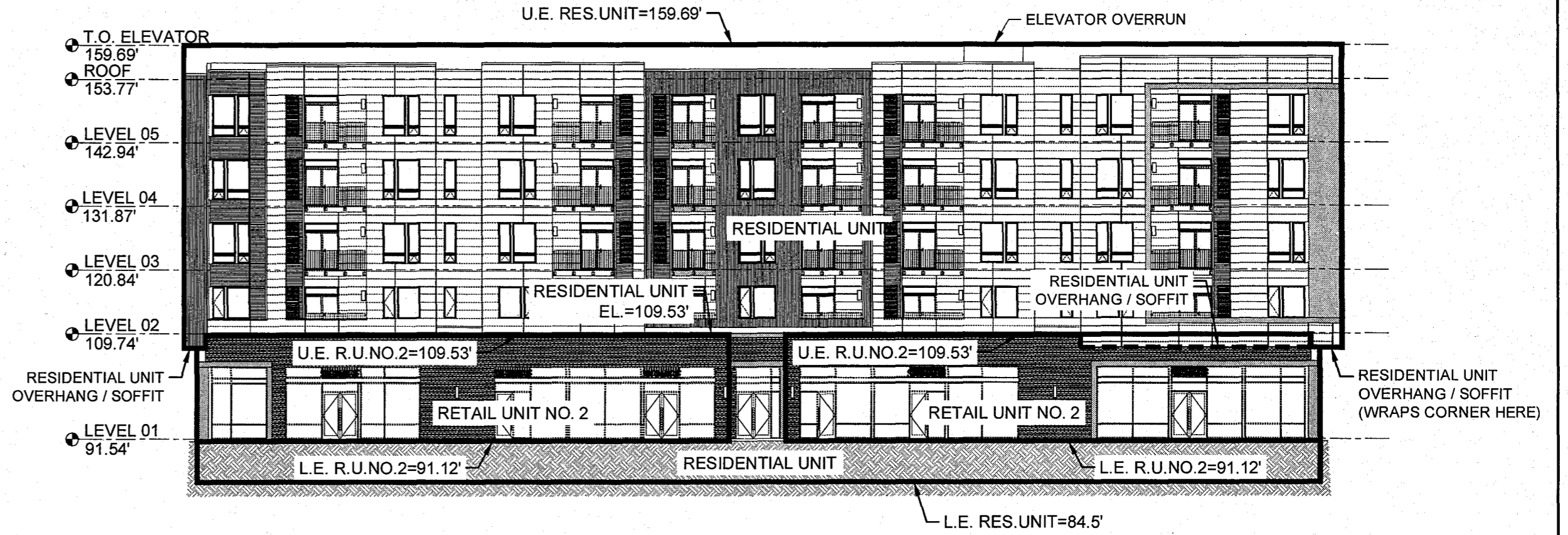


210002257

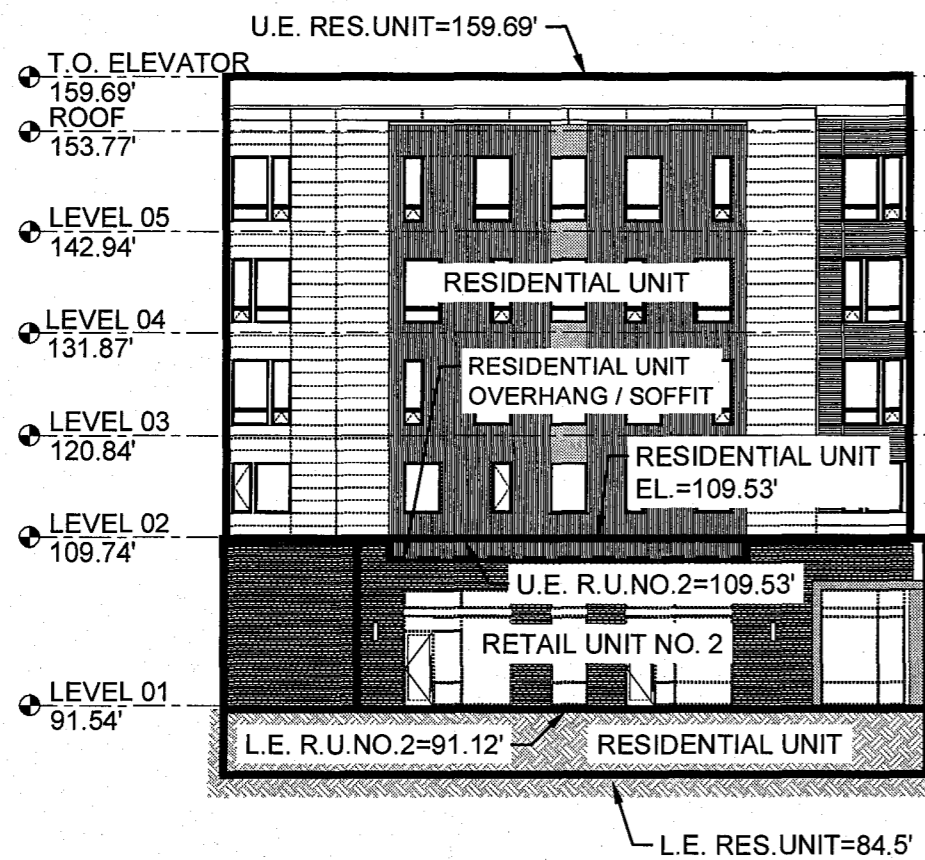
210449



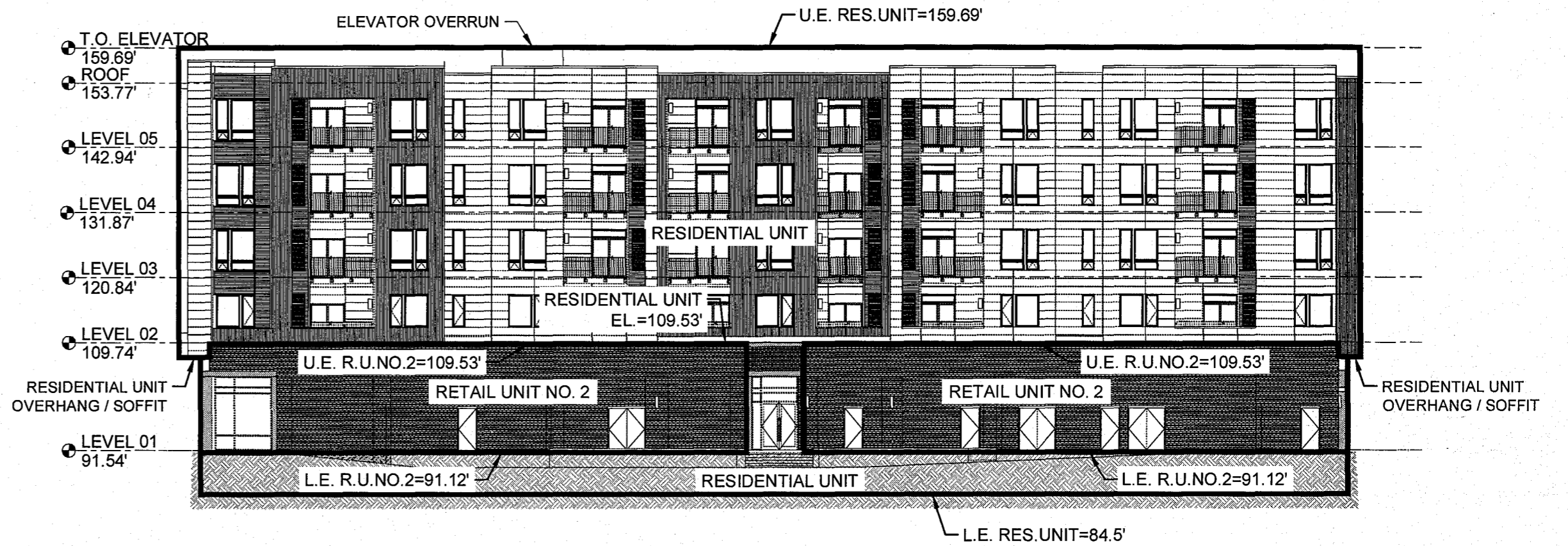
NORTH ELEVATION



EAST ELEVATION



SOUTH ELEVATION



WEST ELEVATION

City of Williamsburg & County of James City
 Circuit Court: This PLAT was recorded on
 2-4-2021
 at 1:41 AM/PM PB PG
 Document # 210449
 MONA A. FOLEY, CLERK
Mon A Foley, Clerk

City of Williamsburg & County of James City
 Circuit Court: This PLAT was recorded on
 2-4-2021
 at 1:55 AM/PM PB PG
 Document # 210002257
 MONA A. FOLEY, CLERK
Mon A Foley, Clerk

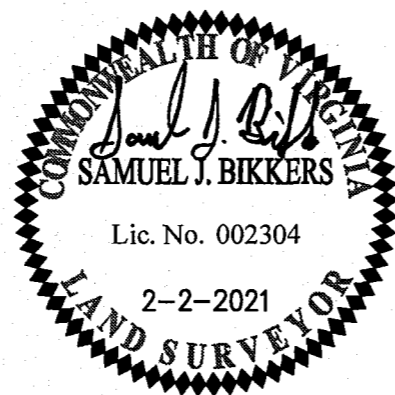
22 Large/Small Plat(s) Recorded
 herewith as # 210449

22 Large/Small Plat(s) Recorded
 herewith as # 210002257

SURVEYOR'S CERTIFICATE

I, SAMUEL J. BIKKERS, A DULY LICENSED LAND SURVEYOR IN THE COMMONWEALTH OF VIRGINIA, DO HEREBY CERTIFY THAT THESE PLANS ARE ACCURATE AND COMPLY WITH SECTION 55.1-1920(B) OF THE VIRGINIA CONDOMINIUM ACT AS AMENDED, AND THAT ALL UNITS OR PORTIONS OF THE SUBMITTED UNITS SHOWN HEREON ARE SUBSTANTIALLY COMPLETE.

Samuel J. Bickers
 SAMUEL J. BIKKERS, L.S. #002304
 2-2-2021
 DATE



5248 Olde Towne Road, Suite 1
 Williamsburg, Virginia 23188
 Phone: (757) 253-0040
 www.aesva.com

Hampton Roads | Central Virginia | Middle Peninsula

EXHIBIT C-3
 CONDOMINIUM PLANS SHOWING
 SECTION AND ELEVATION VIEWS
 BUILDING 2
MIDTOWN ROW COMMERCIAL CONDOMINIUM

CITY OF WILLIAMSBURG

VIRGINIA

Project Contacts: SJB / CMA
 Project Number: W09042-12
 Scale: N/A Date: 02-02-2021
 Sheet Number

11 OF 22