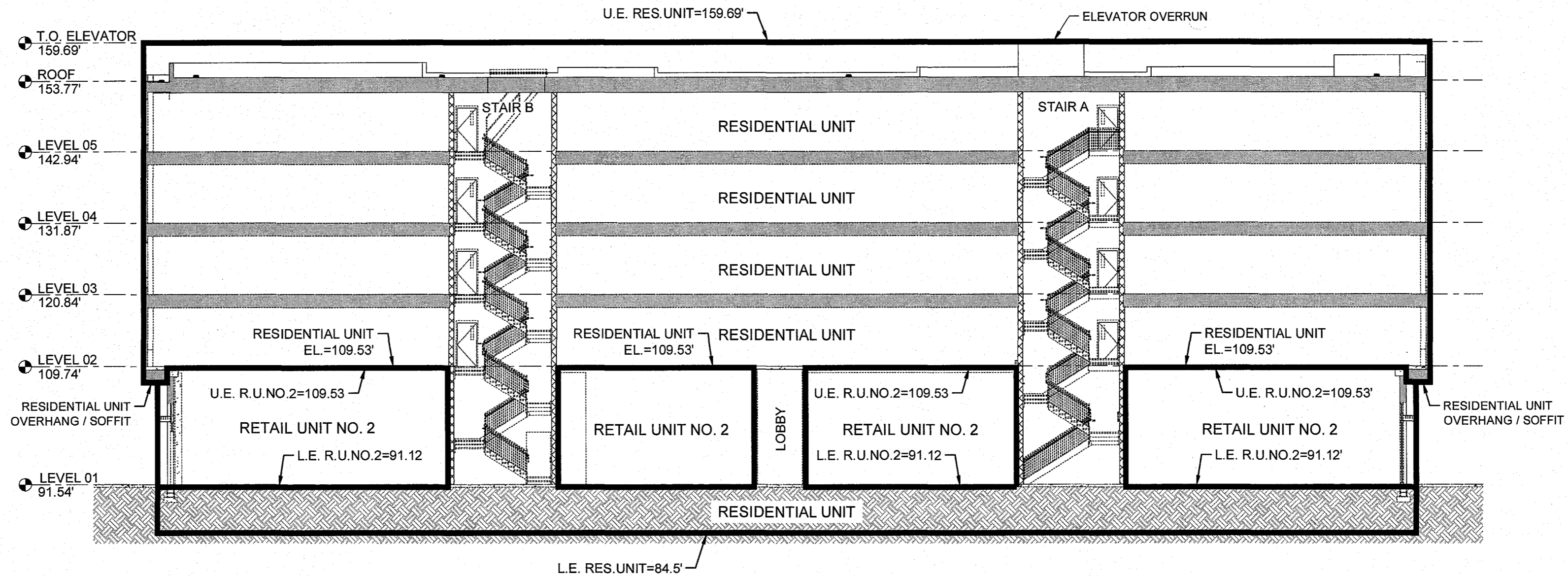
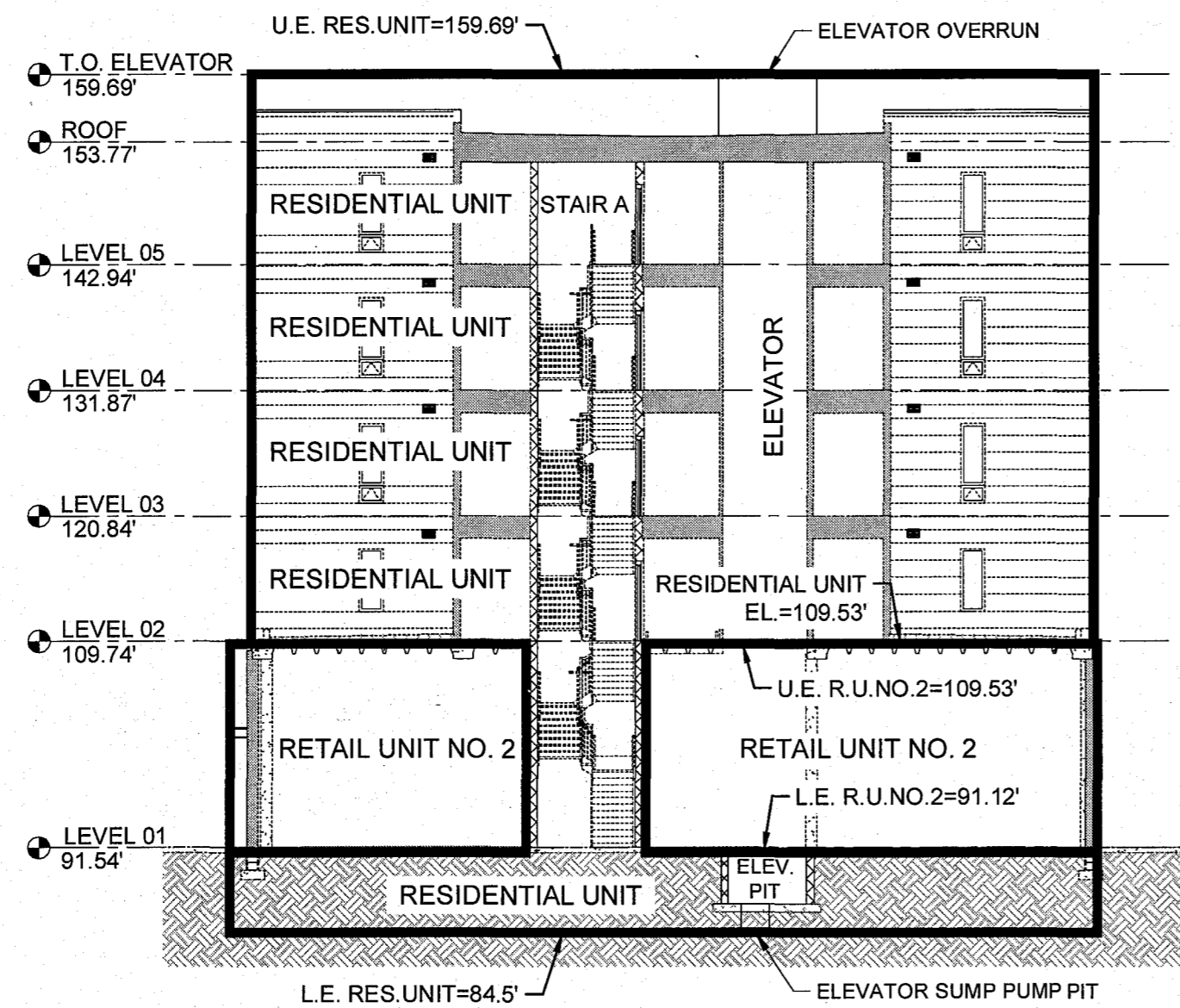


210002257

210449



LONGITUDINAL SECTION - SOUTH TO NORTH



LONGITUDINAL SECTION - EAST TO WEST

City of Williamsburg & County of James City  
 Circuit Court: This PLAT was recorded on  
 2-4-2021  
 at 1:55 AM/PM PB PG  
 Document # 210002257  
 MONA A. FOLEY, CLERK  
 Mona A. Foley, Clerk

City of Williamsburg & County of James City  
 Circuit Court: This PLAT was recorded on  
 2-4-2021  
 at 1:41 AM/PM PB PG  
 Document # 210449  
 MONA A. FOLEY, CLERK  
 Mona A. Foley, Clerk

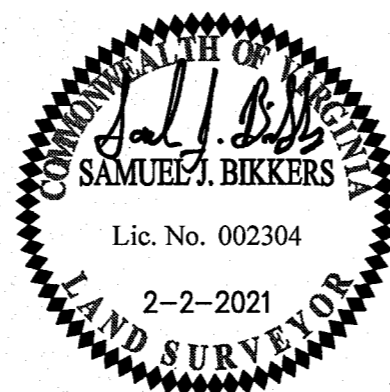
22 Large/Small Plat(s) Recorded  
 herewith as # 210002257

22 Large/Small Plat(s) Recorded  
 herewith as # 210449

SURVEYOR'S CERTIFICATE

I, SAMUEL J. BIKKERS, A DULY LICENSED LAND SURVEYOR IN THE COMMONWEALTH OF VIRGINIA, DO HEREBY CERTIFY THAT THESE PLANS ARE ACCURATE AND COMPLY WITH SECTION 55.1-1920(B) OF THE VIRGINIA CONDOMINIUM ACT AS AMENDED, AND THAT ALL UNITS OR PORTIONS OF THE SUBMITTED UNITS SHOWN HEREON ARE SUBSTANTIALLY COMPLETE.

*Samuel J. Bickers*  
 SAMUEL J. BIKKERS, L.S. #002304  
 2-2-2021  
 DATE



5248 Olde Towne Road, Suite 1  
 Williamsburg, Virginia 23188  
 Phone: (757) 253-0040  
 www.aesva.com

Hampton Roads | Central Virginia | Middle Peninsula

EXHIBIT C-3  
 CONDOMINIUM PLANS SHOWING  
 SECTION AND ELEVATION VIEWS  
 BUILDING 2  
 MIDTOWN ROW COMMERCIAL CONDOMINIUM

CITY OF WILLIAMSBURG

VIRGINIA

Project Contacts: SJB / CMA	
Project Number: W09042-12	
Scale: N/A	Date: 02-02-2021
Sheet Number	

10 OF 22