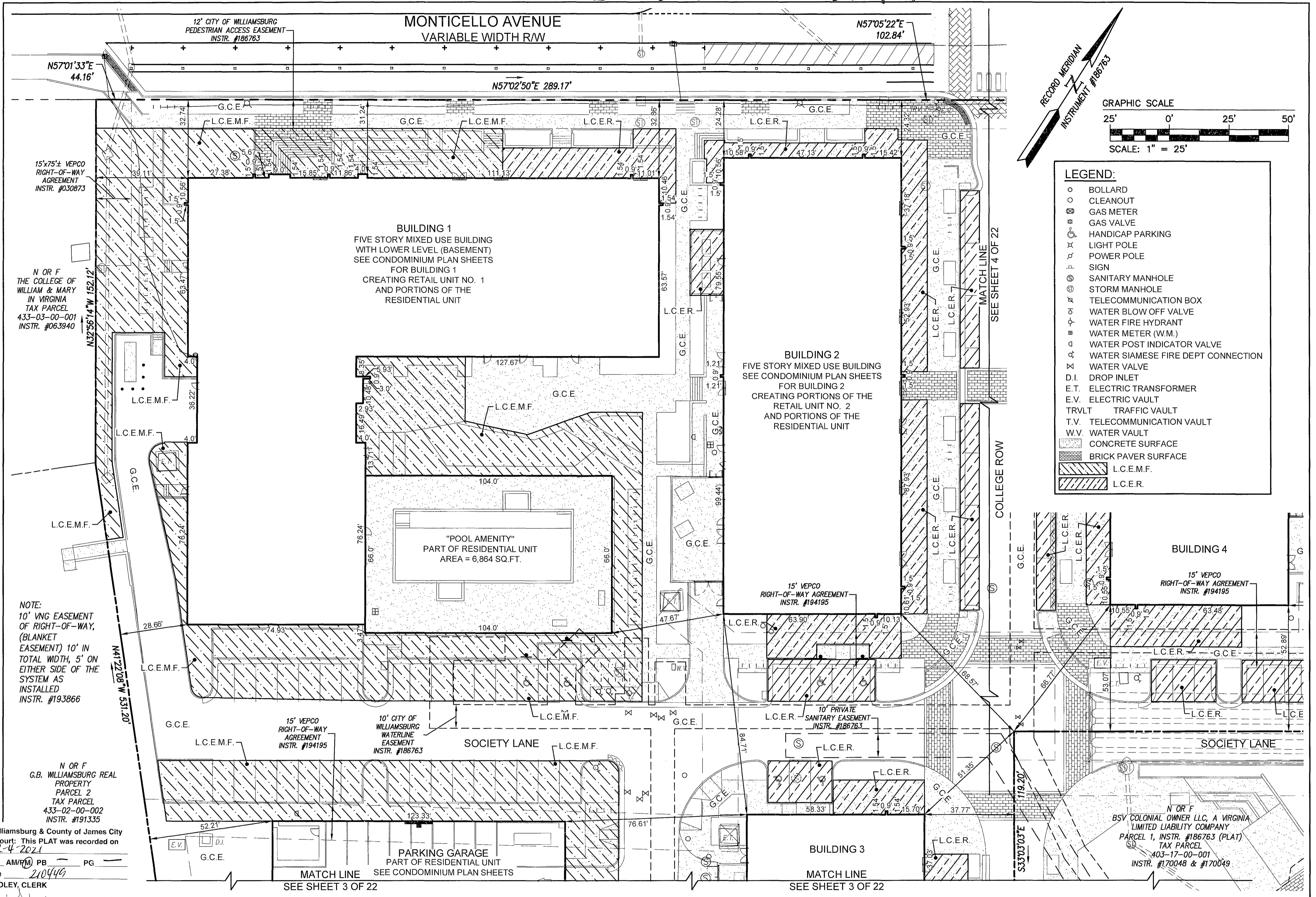


210002257

210449



22 Large/Small Plat(s) Recorded herewith as # 210449

City of Williamsburg & County of James City Circuit Court: This PLAT was recorded on 2-4-2021 at 1:41 AM/PM PB PG Document # 210449 MONA A. FOLEY, CLERK

SURVEYOR'S CERTIFICATE

I, SAMUEL J. BIKKERS, A DULY LICENSED LAND SURVEYOR IN THE COMMONWEALTH OF VIRGINIA, DO HEREBY CERTIFY THAT THIS PLAT IS ACCURATE AND COMPLIES WITH SECTION 55.1-192(A) OF THE VIRGINIA CONDOMINIUM ACT AS AMENDED, AND THAT ALL UNITS OR PORTIONS OF SUCH UNITS SHOWN HEREON ARE SUBSTANTIALLY COMPLETE.

Samuel J. Bickers
SAMUEL J. BIKKERS, L.S. #002304

2-2-2021 DATE
22 Large/Small Plat(s) Recorded herewith as # 210002257



City of Williamsburg & County of James City Circuit Court: This PLAT was recorded on 2-4-2021 at 1:55 AM/PM PB PG Document # 21002257 MONA A. FOLEY, CLERK

EXHIBIT C-1
CONDOMINIUM PLATS SHOWING
SUBMITTED LAND, IMPROVEMENTS AND EXISTING EASEMENTS
MIDTOWN ROW COMMERCIAL CONDOMINIUM

CITY OF WILLIAMSBURG VIRGINIA

Project Contacts: SJB / CMA
Project Number: W09042-12
Scale: 1" = 25' Date: 02-02-2021
Sheet Number
2 OF 22