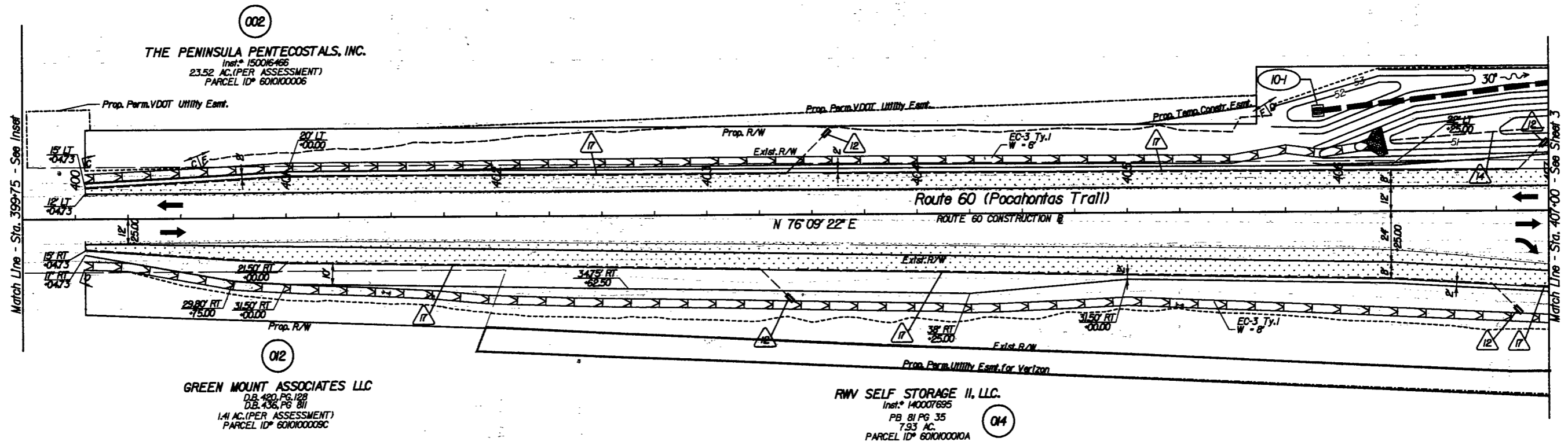
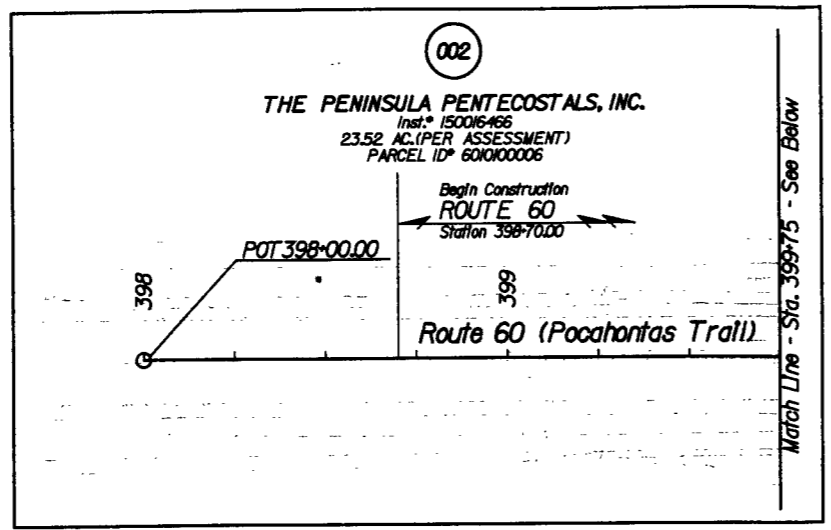


PROJECT MANAGER Mr. Wali Zaman, PE - VDOT Hampton Roads District - (757) 956-3272
SURVEYED BY, DATE Dewberry Engineers Inc., 03/2020
DESIGNED BY, Dewberry Engineers Inc. - (804) 205-3340
SUBSURFACE UTILITY BY, Accumark, 04/2020

Matthew C Thomas 2020.10.29 11:37:17-04707	Matthew C Thomas 2020.10.29 11:37:30-04707	Dewberry Engineers Inc. Glen Allen, Virginia HYDRAULIC ENGINEER	Dewberry Engineers Inc. Glen Allen, Virginia ROADWAY ENGINEER

REVISED	STATE	ROUTE	PROJECT	SHEET NO.
	VA.	60	0060-047-627 R-201 C-501	10

DESIGN FEATURES RELATING TO CONSTRUCTION OR TO REGULATION AND CONTROL OF TRAFFIC MAY BE SUBJECT TO CHANGE AS DEEMED NECESSARY BY THE DEPARTMENT



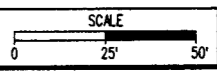
- Key Legend
- 1 6" Curb, Srd. CG-2 Req'd.
 - 2 6" Curb, Srd. CG-3 Req'd.
 - 3 6" Curb and Gutter, Srd. CG-6 Req'd.
 - 4 6" Curb and Gutter, Srd. CG-7 Req'd.
 - 5 Conc. Raised Median, Srd. MS-1 Req'd.
 - 6 Conc. Raised Median, Srd. MS-1A Req'd.
 - 7 Grass Raised Median, Srd. MS-2 Req'd.
 - 8 Entrance Gutter, Srd. CG-9A Req'd.
 - 9 Entrance Gutter, Srd. CG-9B Req'd.
 - 10 Entrance Srd. CG-11 Req'd.
 - 11 Curb Ramp, Srd. CG-12 Req'd.
 - 12 Underdrain Endwall, Srd. EW-12 Req'd.
 - 13 Abandon Pipe, Srd. AP-1 Req'd.
 - 14 Groundwater Underdrain, Srd. UD-1 Req'd.
 - 15 Median Underdrain, Srd. UD-2 Req'd.
 - 16 Sidewalk Underdrain, Srd. UD-3 Req'd.
 - 17 Pavement Underdrain, Srd. UD-4 Req'd.
 - 18 Crossover, Srd. CD-1 Req'd.
 - 19 Crossover, Srd. CD-2 Req'd.
 - 20 Handrail, Srd. HR-1 Type II Req'd.
 - 21 Barbed Wire Fence, Srd. FE-B Req'd.
 - 22 Chain Link Fence, Srd. FE-CL Req'd.
 - 23 Guardrail, Srd. GR-MSS1 Req'd.
 - 24 Guardrail, Srd. GR-MSS1A Req'd.
 - 25 Guardrail Terminal, Srd. GR-MSS2 Req'd.
 - 26 Guardrail, Srd. GR-10, Type I Req'd.
 - 27 Guardrail, Srd. GR-10, Type II Req'd.
 - 28 Guardrail, Srd. GR-10, Type III Req'd.
 - 29 Trailing End Terminal, Srd. GR-MSS3 Req'd.
 - 30 Fixed Object Mt., Srd. GR-FOA-2 Req'd.
 - 31 Fixed Object Mt., Srd. GR-FOA-2 Req'd.
 - 32 Guardrail, Srd. GR-MSS4 Req'd.
 - 33 Bridge Pier Protection, Srd. BPPS-1
 - 34 Remove Exist. Guardrail
 - 35 Remove Exist. Fence
 - 36 Remove Exist. Structure
 - 37 Remove Exist. Pipe
 - 38 Abandon and Plug Exist. Pipe
 - 39 Adj. Exist. Structure
 - 40 Clean Out Exist. Structure
 - 41 Clean Out Exist. Pipe
 - 42 Full Depth Sawcut
 - 43 6" Curb and Dry Gutter Mod. CG-6 Req'd.
 - 44 Conc. Median Barrier, Srd. MS-7 Req'd.

- 16 Underdrain Endwall, Srd. EW-12 Req'd.
- 17 Pavement Underdrain, Srd. UD-4 Req'd.
- 18 Crossover, Srd. CD-1 Req'd.
- 19 Crossover, Srd. CD-2 Req'd.
- 20 Handrail, Srd. HR-1 Type II Req'd.
- 21 Barbed Wire Fence, Srd. FE-B Req'd.
- 22 Chain Link Fence, Srd. FE-CL Req'd.
- 23 Guardrail, Srd. GR-MSS1 Req'd.
- 24 Guardrail, Srd. GR-MSS1A Req'd.
- 25 Guardrail Terminal, Srd. GR-MSS2 Req'd.
- 26 Guardrail, Srd. GR-10, Type I Req'd.
- 27 Guardrail, Srd. GR-10, Type II Req'd.
- 28 Guardrail, Srd. GR-10, Type III Req'd.
- 29 Trailing End Terminal, Srd. GR-MSS3 Req'd.
- 30 Fixed Object Mt., Srd. GR-FOA-2 Req'd.
- 31 Fixed Object Mt., Srd. GR-FOA-2 Req'd.
- 32 Guardrail, Srd. GR-MSS4 Req'd.
- 33 Bridge Pier Protection, Srd. BPPS-1
- 34 Remove Exist. Guardrail
- 35 Remove Exist. Fence
- 36 Remove Exist. Structure
- 37 Remove Exist. Pipe
- 38 Abandon and Plug Exist. Pipe
- 39 Adj. Exist. Structure
- 40 Clean Out Exist. Structure
- 41 Clean Out Exist. Pipe
- 42 Full Depth Sawcut
- 43 6" Curb and Dry Gutter Mod. CG-6 Req'd.
- 44 Conc. Median Barrier, Srd. MS-7 Req'd.

- Denotes Full Depth Pavement
- Denotes Pavement Demolition
- Denotes Mill & Variable Depth Overlay
- Denotes Milling and Overlay
- Denotes Guardrail Bumpout Pavement Section
- Denotes Construction Limits In Cuts
- Denotes Construction Limits In Fills

REFERENCES
(PROFILES, DETAIL & DRAINAGE DESCRIPTION SHEETS, ETC.)

Alignment Data	IG
ESC Phase 1	2D series
ESC Phase 2	2E series
ESC Phase 3	2F series
Pocahontas Trail Profile	10A
Right-of-Way Plan	10RW
Drainage Descriptions	16
Storm Sewer Profiles	17



PROJECT	0060-047-627	SHEET NO.	10
---------	--------------	-----------	----