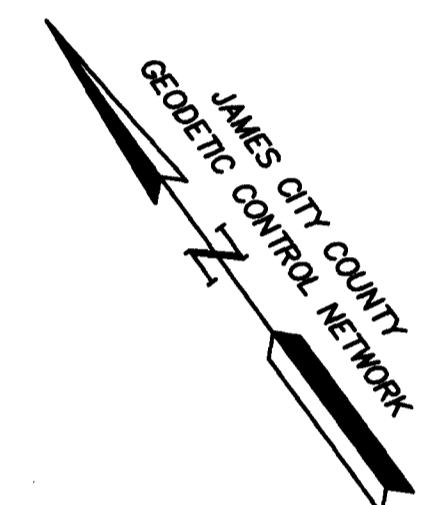
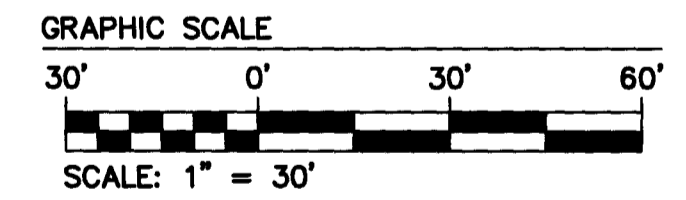


- CONDOMINIUM NOTES:**
1. THE PROPERTY AS SHOWN HEREON, BEING ALL OF PARCEL 7, SITUATED IN THE COUNTY OF JAMES CITY, VIRGINIA, AND BEING DESIGNATED AS "PARCEL 7, 5.7978 AC.," ON THAT CERTAIN PLAT DATED OCTOBER 6, 1994, MADE BY AES CONSULTING ENGINEERS, ENTITLED "ALTA/ACSM LAND TITLE SURVEY, PARCEL 7, NORGE PLAZA, INC." AND RECORDED IN THE CLERK'S OFFICE OF THE CITY OF WILLIAMSBURG AND COUNTY OF JAMES CITY, VIRGINIA, IS HEREBY SUBJECTED TO THE CONDOMINIUM REGIME FOR PARCEL 7, NORGE CENTER CONDOMINIUM ("CONDOMINIUM") IN ACCORDANCE WITH THE VIRGINIA CONDOMINIUM ACT, TITLE 55.1, SUBTITLE IV, CHAPTER 19, §55.1-1900 ET SEQ. OF THE CODE OF VIRGINIA, 1950 EDITION, AS AMENDED.
  2. THE DIMENSIONS OF THE UNIT SHOWN ON THIS CONDOMINIUM PLAT ARE BASED ON THE UNIT BOUNDARY AS DESCRIBED IN THE DECLARATION, AND REFLECT THE FIELD MEASURED DIMENSIONS TO THE FACE OF THE BUILDING.
  3. THE ELEVATIONS SHOWN HEREON ARE BASED ON NAVD83 DATUM.
  4. C.E. = COMMON ELEMENTS MEANS ALL PORTIONS OF THE PROPERTY LOCATED OUTSIDE OF THE UNITS, EXCLUDING LIMITED COMMON ELEMENTS, AS DESIGNATED AND SHOWN ON THE PLAT.
  5. L.C.E. = LIMITED COMMON ELEMENTS MEANS THOSE PORTIONS OF THE PROPERTY LOCATED OUTSIDE OF THE UNITS FOR THE EXCLUSIVE USE OF CERTAIN UNITS AS DESIGNATED AND SHOWN ON THE PLAT AND MORE FULLY DESCRIBED IN SECTION 2.3 AND AS PERMITTED BY SECTION 55-79.83(B) OF THE ACT.



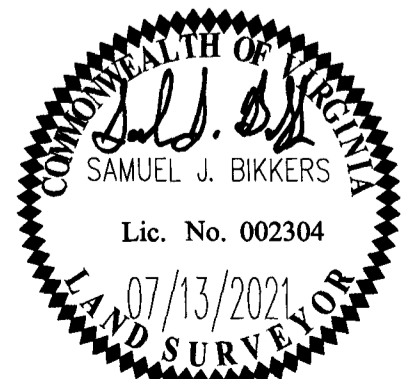
**LEGEND**

○ PKNF	NAIL FOUND
○ IRF	IRON ROD FOUND
○ DHF	DRILL HOLE FOUND
	CONCRETE
	LIMITED COMMON ELEMENT
L.C.E.	LIMITED COMMON ELEMENT
C.E.	COMMON ELEMENT
	EDGE OF PAVEMENT
	BUILDING LINE (FACE)
	PROPERTY LINE
	RIGHT OF WAY



STATE OF VIRGINIA  
 CITY OF WILLIAMSBURG & COUNTY OF JAMES CITY CIRCUIT COURT.  
 THIS 19th DAY OF July, 2021,  
 THE PLAT SHOWN HEREON WAS PRESENTED AND ADMITTED TO  
 THE RECORD AS THE LAW DIRECTS. @ 9:03 AM/PM  
 INSTRUMENT # 210014456  
 TESTE: *Monica A. Foley*  
 MONA A. FOLEY, CLERK

**SURVEYOR'S CERTIFICATE**  
 I, SAMUEL J. BIKKERS, A DULY LICENSED LAND SURVEYOR IN THE COMMONWEALTH OF VIRGINIA, DO HEREBY CERTIFY THAT THIS PLAT IS ACCURATE AND COMPLIES WITH SECTION 55.1-1920(A) OF THE VIRGINIA CONDOMINIUM ACT AS AMENDED, AND THAT ALL UNITS OR PORTIONS OF SUCH UNITS SHOWN HEREON ARE SUBSTANTIALLY COMPLETE.  
*Samuel J. Bickers*  
 SAMUEL J. BIKKERS, L.S. #002304  
 7-13-21  
 DATE



**AES**  
 CONSULTING ENGINEERS  
 Hampton Roads | Central Virginia | Middle Peninsula  
 5248 Olde Towne Road, Suite 1  
 Williamsburg, Virginia 23188  
 Phone: (757) 253-0040  
 Fax: (757) 220-8994  
 www.aesva.com

**EXHIBIT D**  
 CONDOMINIUM PLAT SHOWING  
 SUBMITTED LAND, IMPROVEMENTS AND EXISTING EASEMENTS  
**115 NORGE LANE, A CONDOMINIUM**  
 STONEHOUSE DISTRICT | JAMES CITY COUNTY | VIRGINIA

Project Contacts: SJB/JFS	
Project Number: W10689-01	
Scale: 1"=30'	Date: 07/13/2021
Sheet Number	
<b>2 OF 2</b>	
(5)	

S:\0201\10689 - Chesapeake Bank, Et Al\0001 - Condo Plat\115Norge\115Norge.dwg, 7/13/2021, 10:31:51 AM, hennelk

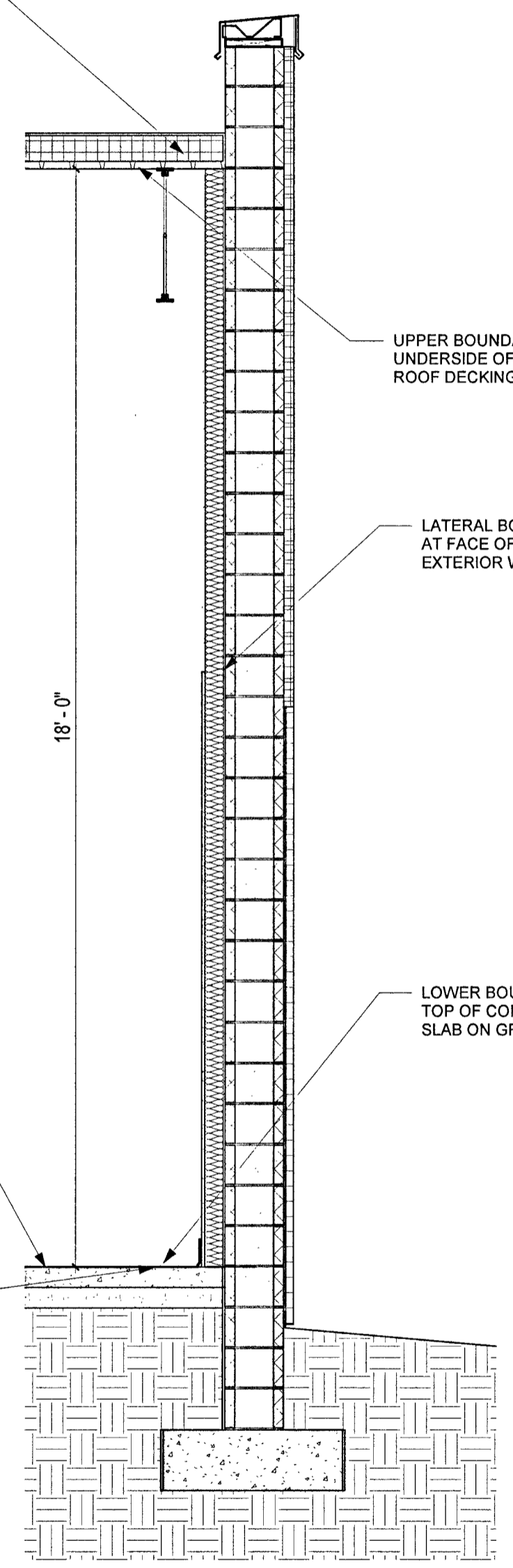




2100/4456

**GuernseyTingle**  
757-220-0220 Williamsburg, VA  
guernseytingle.com  
This is a public record. Any reproduction or distribution of this record is prohibited by law.

EXISTING LOW-SLOPE ROOFING SYSTEM ON METAL ROOF DECKING ON STEEL STRUCTURE.



UPPER BOUNDARY AT UNDERSIDE OF METAL ROOF DECKING

LATERAL BOUNDARY AT FACE OF CMU ON EXTERIOR WALL

LOWER BOUNDARY AT TOP OF CONCRETE SLAB ON GRADE

FINISHED FLOOR ELEVATION IS 116.38'

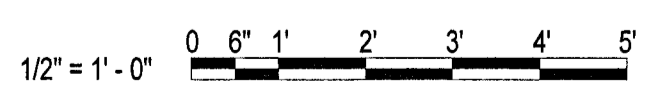
ELEVATIONS SHOWN ARE BASED ON NAVD88 DATUM.

EXISTING CONCRETE SLAB

### EXHIBIT E 115 NORGE LANE, A CONDOMINIUM

### TYPICAL WALL SECTION 1/2" = 1'-0"

5 Large/Small Plat(s) Recorded  
herewith as #2100/4456



KENSINGTON SCHOOL

WILLIAMSBURG, VA 23188

CONDO SECTIONS

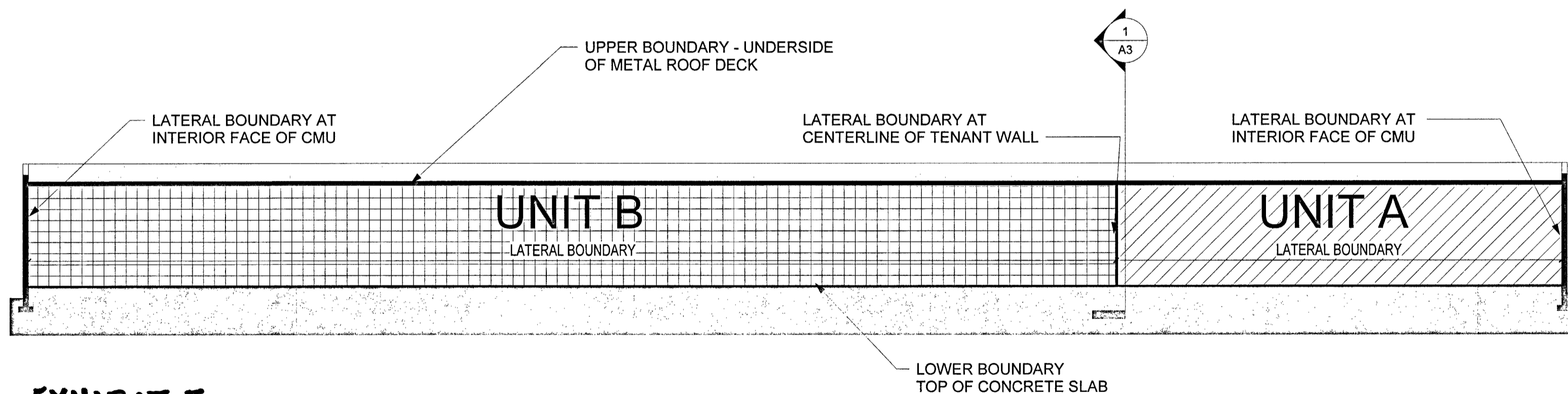
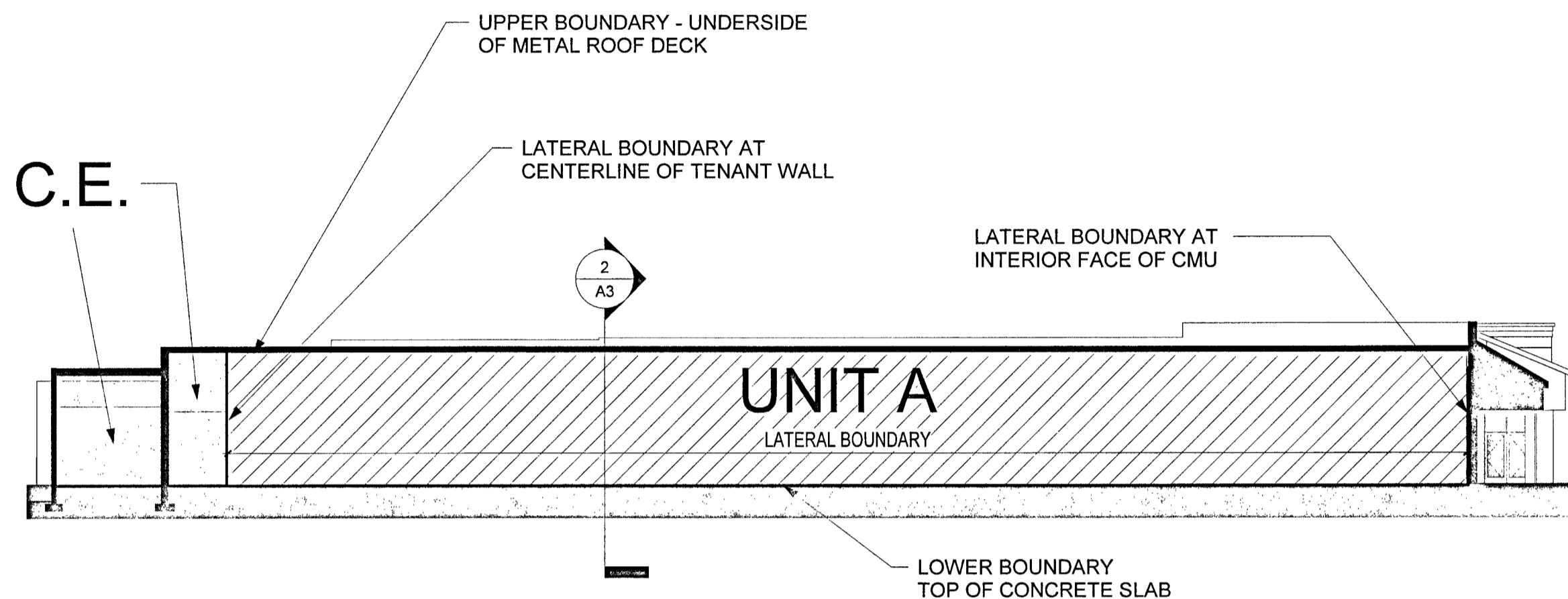
Date: 5/26/21  
Drawn: BAS  
Checked: Checker  
Project: 221038

A2

4 of 5

City of Williamsburg & County of James City  
Circuit Court: This PLAT was recorded on  
July 19, 2021  
at 9:03 AM/PM, PB      PG       
Document # 2100/4456  
MONA A. FOLEY, CLERK  
Mona A. Foley, Clerk

Printed on: 7/12/2021 12:47:06 PM



**EXHIBIT E**  
Section 3

115 NORGE LANE, A CONDOMINIUM

5 Large Small Plat(s) Recorded  
herewith as # 210014456

City of Williamsburg & County of James City  
Circuit Court: This PLAT was recorded on  
July 15, 2021  
at 7:03 AM/PM, PB PG  
Document # 210014456  
MONA A. FOLEY, CLERK  
*Mona A. Foley*, Clerk



Date: 5/26/21  
Drawn: BAS  
Checked: BAS  
Project: 221038

A3

KENSINGTON SCHOOL

WILLIAMSBURG, VA 23188

BUILDING SECTIONS