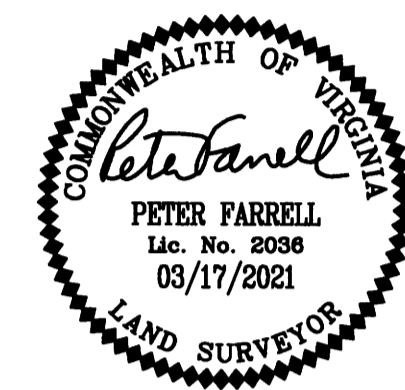


210012686

SUBDIVISION OF  
PARCEL ID: #0630100005  
CREATING  
**STONEHOUSE PRESERVE &  
RIVERFRONT PRESERVE**

STONEHOUSE DISTRICT JAMES CITY COUNTY VIRGINIA  
DATE: 03/17/2021 SCALE: 1"=500' JOB # 17-378

**LandTech Resources, Inc.**  
Engineering & Surveying Consultants  
205 Bulifants Blvd., Suite E, Williamsburg, Virginia 23188  
Phone: (757) 565-1677 Fax: (757) 565-0782  
web: landtechresources.com



SHEET 6 OF 11  
**JCC-S-20-0049**  
500' 0' 500' 1000'  
SCALE: 1"=500'

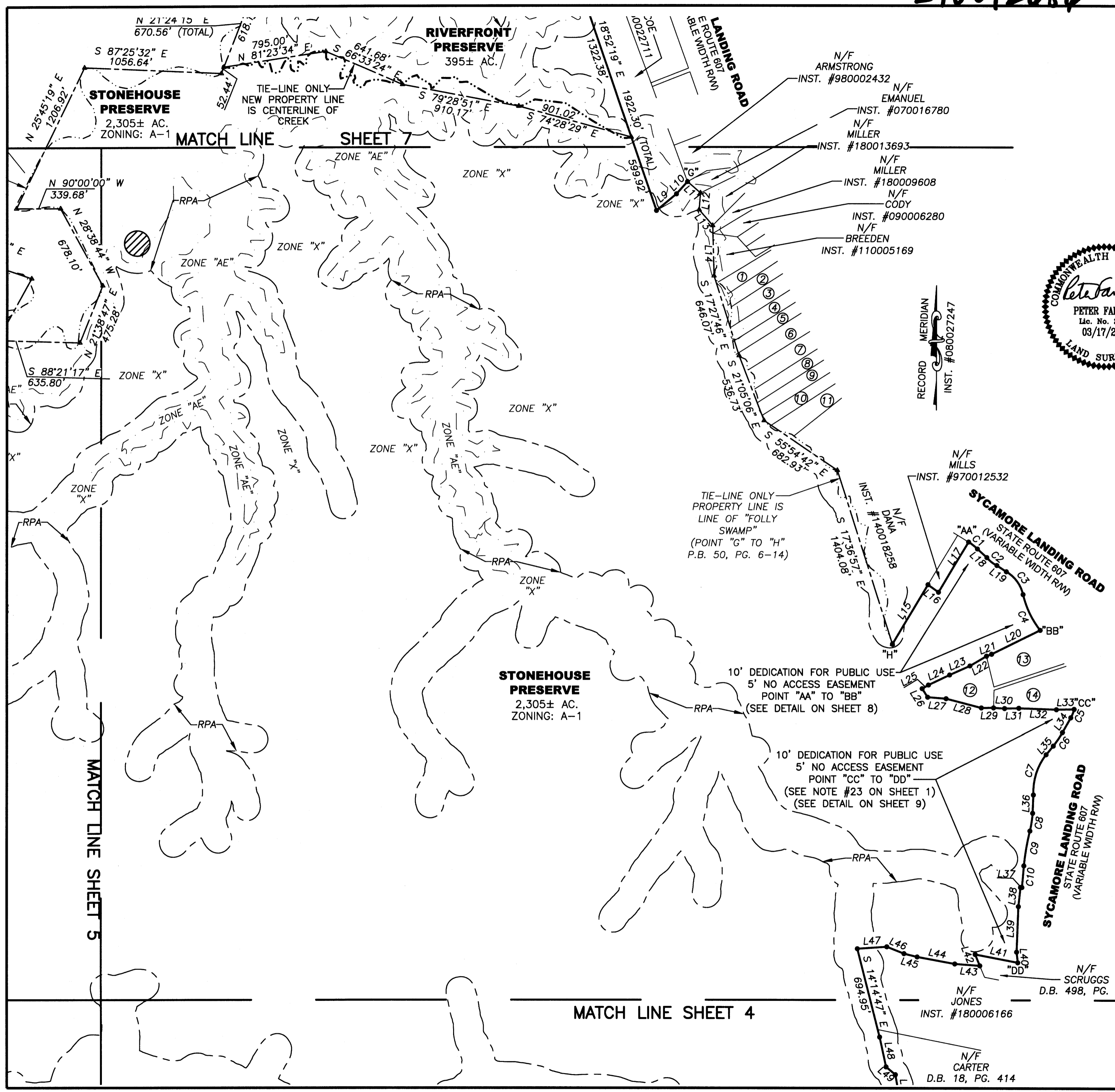
**ADJACENT OWNERS**

- |                                      |  |
|--------------------------------------|--|
| ① N/F WILLIAMS<br>D.B. 261, PG. 84   | ⑧ N/F TRUEBLOOD<br>INST. #190005343          |
| ② N/F RICHARDS<br>D.B. 727, PG. 844  | ⑨ N/F ROGERS<br>INST. #180012279             |
| ③ N/F STEVENS<br>INST. #180015597    | ⑩ N/F ESTLACK & MIHALCOE<br>INST. #170011758 |
| ④ N/F NAPIER<br>INST. #140010378     | ⑪ N/F ESTES<br>D.B. 214, PG. 444             |
| ⑤ N/F SILVER<br>INST. #200013561     | ⑫ N/F MCALPINE<br>INST. #100024601           |
| ⑥ N/F PAYNE<br>INST. #170016767      | ⑬ N/F STILLWELL<br>INST. #120011237          |
| ⑦ N/F FAIRBANKS<br>D.B. 135, PG. 139 | ⑭ N/F PAKIT<br>INST. #100005088              |

11 Large Small Plat(s) Recorded  
herewith as # 210012686

ARCHAEOLOGICAL/HISTORIC RESOURCE SITE  
(PER STONEHOUSE MASTER PLAN)  
RPA = APPROXIMATE LIMIT OF RESOURCE PROTECTION AREA  
(PER INST. #080027247)  
SEE SHEET 7 FOR EXISTING LINE TABLE  
SEE SHEET 4 FOR EXISTING CURVE TABLE

City of Williamsburg & County of James City  
Circuit Court: This PLAT was recorded on  
6-23-2021  
at 8:44 AM/PM, PG. \_\_\_\_\_  
Document # 210012686  
MONA A. FOLEY, CLERK  
Mona A. Foley, Clerk



MATCH LINE SHEET 5

MATCH LINE SHEET 7

MATCH LINE SHEET 4

**STONEHOUSE PRESERVE**  
2,305± AC.  
ZONING: A-1

**RIVERFRONT PRESERVE**  
395± AC.

**STONEHOUSE PRESERVE**  
2,305± AC.  
ZONING: A-1

TIE-LINE ONLY  
PROPERTY LINE IS  
LINE OF "FOLLY  
SWAMP"  
(POINT "G" TO "H"  
P.B. 50, PG. 6-14)

10' DEDICATION FOR PUBLIC USE  
5' NO ACCESS EASEMENT  
POINT "AA" TO "BB"  
(SEE DETAIL ON SHEET 8)

10' DEDICATION FOR PUBLIC USE  
5' NO ACCESS EASEMENT  
POINT "CC" TO "DD"  
(SEE NOTE #23 ON SHEET 1)  
(SEE DETAIL ON SHEET 9)

**SYCAMORE LANDING ROAD**  
STATE ROUTE 607  
(VARIABLE WIDTH RW)

**SYCAMORE LANDING ROAD**  
STATE ROUTE 607  
(VARIABLE WIDTH RW)

**LANDING ROAD**  
STATE ROUTE 607

RECORD MERIDIAN  
INST. #080027247

N/F SCRUGGS  
D.B. 498, PG. 570

N/F JONES  
INST. #180006166

N/F CARTER  
D.B. 18, PG. 414

N/F ARMSTRONG  
INST. #980002432

N/F EMANUEL  
INST. #070016780

N/F MILLER  
INST. #180013693

N/F MILLER  
INST. #180009608

N/F CODY  
INST. #090006280

N/F BREEDEN  
INST. #110005169

N/F MILLS  
INST. #970012532

N/F DANA  
INST. #140018258

at 8:44 AM/PM, PG. \_\_\_\_\_

Document # 210012686

MONA A. FOLEY, CLERK