



VICINITY MAP  
NOT TO SCALE



I HEREBY CERTIFY THAT THIS EASEMENT PLAT IS CORRECT AND TO THE BEST OF MY KNOWLEDGE AND BELIEF COMPLIES WITH THE MINIMUM PROCEDURES AND STANDARDS ESTABLISHED BY THE VIRGINIA STATE BOARD OF ARCHITECTS, PROFESSIONAL ENGINEERS, LAND SURVEYORS AND CERTIFIED LANDSCAPE ARCHITECTS

NOTES:  
1.) SOURCE OF MERIDIAN/NAD 83 (GORS 2011) VIRGINIA STATE PLANE SOUTH ZONE BASED UPON GPS OBSERVATION PER VMS

- LEGEND**
- PROPERTY LINE
  - ROD FOUND
  - ROD SET
  - ( L ) EASEMENT TIE LINES
  - X — X — FENCE
  - ▨ PROPOSED EASEMENT
  - O — OVERHEAD POWER
  - POWER POLE
  - COMM PEDESTAL



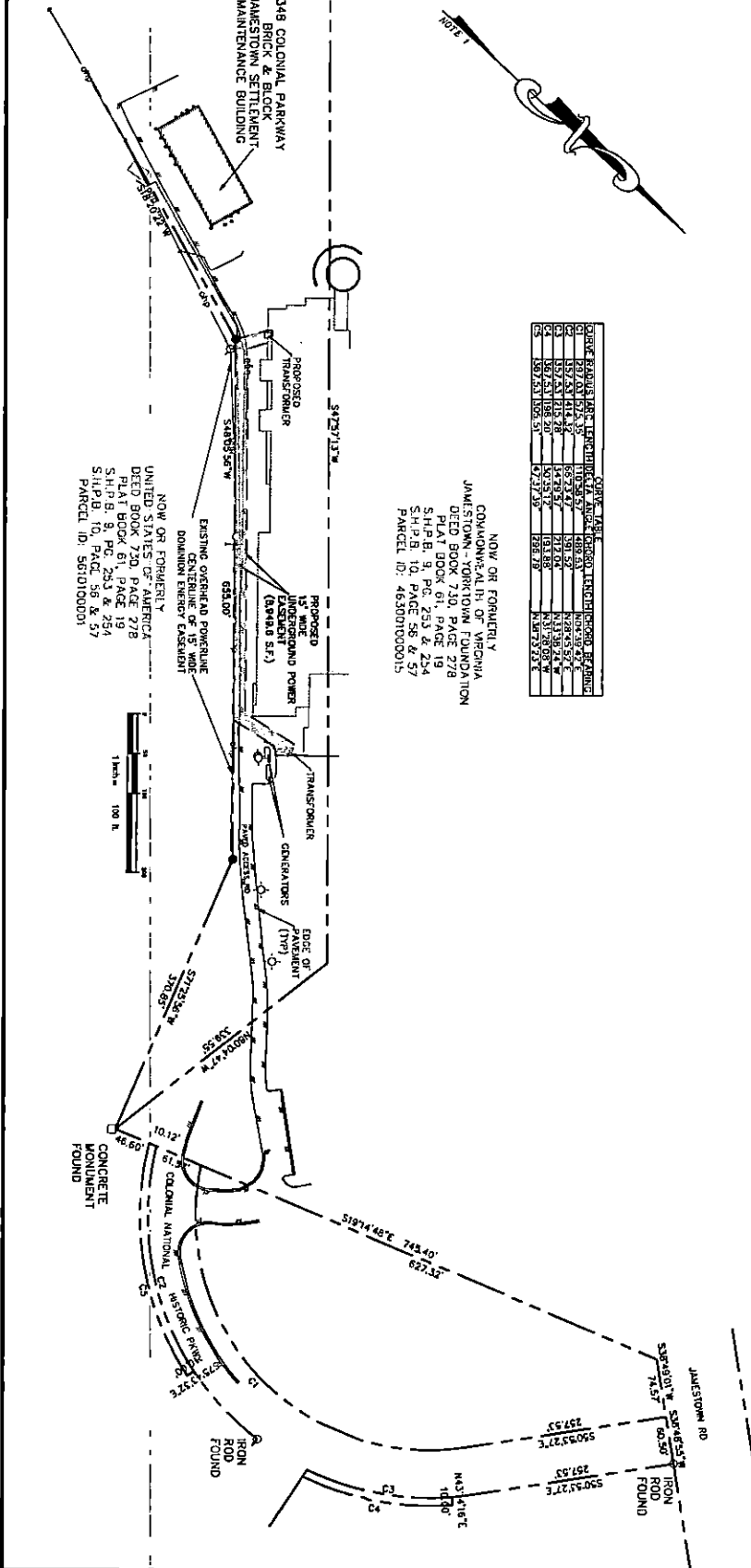
**Draper Aden Associates**  
Engineering • Surveying • Environmental Services

703 Thimble Shoals Boulevard, Suite C2 • Richmond, VA • Raleigh, NC  
Newport News, VA 23608 • Blackburg, VA • Fayetteville, NC  
757-592-9888 Fax: 757-599-3384 • Charlottesville, VA • Northern Virginia  
www.daa.com • Virginia Beach, VA

**EXHIBIT SHOWING UNDERGROUND POWER EASEMENT TO BE DEDICATED TO THE DOMINION ENERGY VIRGINIA AT JAMESTOWN SETTLEMENT MUSEUM**  
JAMES CITY COUNTY, VIRGINIA

- △ REVISIONS
- △ 06/29/16 COMMENTS
- △ 07/11/16 COMMENTS
- △
- △

DESIGNED BY: VA  
DRAWN BY: LGS  
CHECKED BY: LGS  
SCALE: NOT TO SCALE  
DATE: 08/22/2019  
PROJECT NUMBER:  
19070199-010504

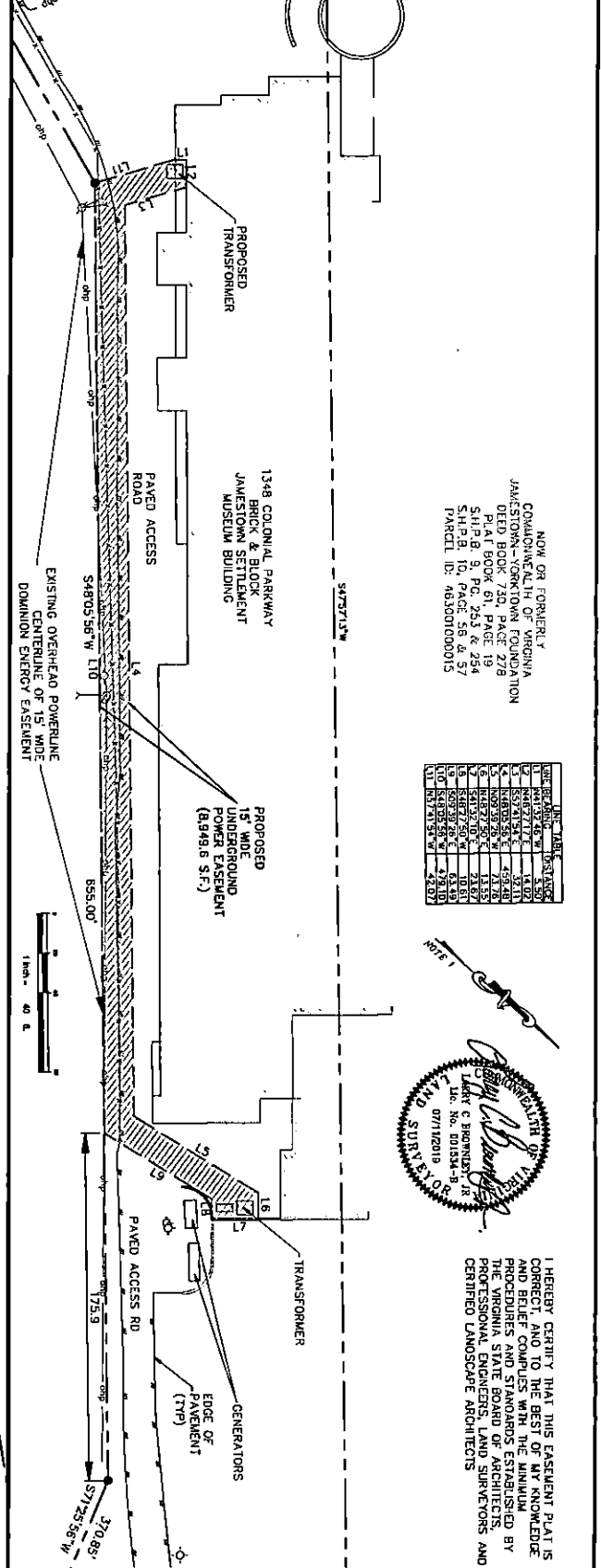


**GRID TABLE**

GRID	EASTING	NORTHING
1	157,828.414	1,581,529.52
2	157,828.414	1,581,529.52
3	157,828.414	1,581,529.52
4	157,828.414	1,581,529.52
5	157,828.414	1,581,529.52
6	157,828.414	1,581,529.52
7	157,828.414	1,581,529.52
8	157,828.414	1,581,529.52
9	157,828.414	1,581,529.52
10	157,828.414	1,581,529.52

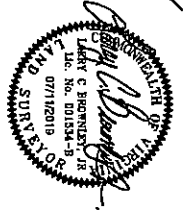
NOW OR FORMERLY COMMONWEALTH OF VIRGINIA  
 JAMESTOWN - YORKTOWN FOUNDATION  
 DEED BOOK 730, PAGE 278  
 PLAT BOOK 61, PAGE 19  
 S.H.P.B. 9, P.G. 253 & 254  
 S.H.P.B. 10, PAGE 56 & 57  
 PARCEL ID: 463001000015

NOW OR FORMERLY UNITED STATES OF AMERICA  
 DEED BOOK 750, PAGE 278  
 PLAT BOOK 61, PAGE 19  
 S.H.P.B. 9, P.G. 253 & 254  
 S.H.P.B. 10, PAGE 56 & 57  
 PARCEL ID: 560100001



**GRID TABLE**

GRID	EASTING	NORTHING
1	157,828.414	1,581,529.52
2	157,828.414	1,581,529.52
3	157,828.414	1,581,529.52
4	157,828.414	1,581,529.52
5	157,828.414	1,581,529.52
6	157,828.414	1,581,529.52
7	157,828.414	1,581,529.52
8	157,828.414	1,581,529.52
9	157,828.414	1,581,529.52
10	157,828.414	1,581,529.52



I HEREBY CERTIFY THAT THIS EASEMENT PLAT IS CORRECT AND TO THE BEST OF MY KNOWLEDGE AND BELIEF IT COMES INTO BEING IN ACCORDANCE WITH THE PROCEDURES AND STANDARDS ESTABLISHED BY THE VIRGINIA STATE BOARD OF ARCHITECTS, PROFESSIONAL ENGINEERS, LAND SURVEYORS AND CERTIFIED LANDSCAPE ARCHITECTS

**EXHIBIT SHOWING UNDERGROUND POWER EASEMENT TO BE DEDICATED TO THE DOMINION ENERGY VIRGINIA AT JAMESTOWN SETTLEMENT MUSEUM**  
 JAMES CITY COUNTY, VIRGINIA

**Draper Aden Associates**  
 Engineering • Surveying • Environmental Services

703 Thimble Shoals Boulevard, Suite C2 • Richmond, VA • Raleigh, NC  
 Newport News, VA 23606 • Blacksburg, VA • Fayetteville, NC  
 757-599-9800 Fax: 757-599-3684 • Charlottesville, VA • Northern Virginia  
 www.daa.com

DESIGNED BY: MA  
 DRAWN BY: MA  
 CHECKED BY: LCB  
 SCALE: 1" = 100' & 1" = 40'  
 DATE: 08/29/2019  
 PROJECT NUMBER: 19070199-010504