

Dewberry

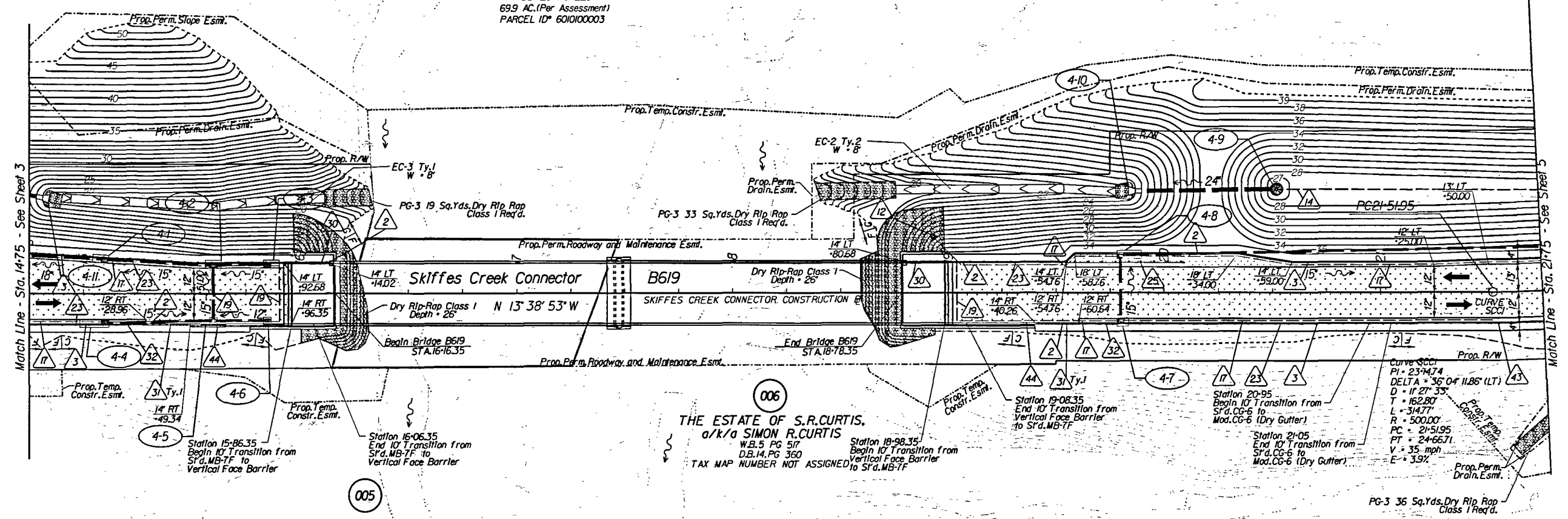
PROJECT MANAGER Mr. Wali Zaman, PE - VDOT Hampton Roads District - (757) 956-3272
SURVEYED BY, DATE Dewberry Engineers Inc., 03/2020
DESIGNED BY, Dewberry Engineers Inc. - (804) 205-3340
SUBSURFACE UTILITY BY, Accumark, 04/2020

		REVISED	STATE	ROUTE	PROJECT	SHEET NO.
		12/8/20 03/24/21 04/07/21	VA.	60	0060-047-627 R-201 C-501	4
Matthew C Thomas 2021.04.07 09:15:11 -04'00'	Matthew C Thomas 2021.04.07 09:15:36 -04'00'	DESIGN FEATURES RELATING TO CONSTRUCTION OR TO REGULATION AND CONTROL OF TRAFFIC MAY BE SUBJECT TO CHANGE AS DEEMED NECESSARY BY THE DEPARTMENT				
Dewberry Engineers Inc. Glen Allen, Virginia HYDRAULIC ENGINEER	Dewberry Engineers Inc. Glen Allen, Virginia ROADWAY ENGINEER					

002
THE PENINSULA PENTECOSTALS, INC.
Inst.* 150016466
10.49 AC.(PER ASSESSMENT)
PARCEL ID* 6010100007

005
CITY OF NEWPORT NEWS, VIRGINIA
DB 23 PG 228
69.9 AC.(Per Assessment)
PARCEL ID* 6010100003

007
SKIFFES CREEK, LLC
Inst.* 020023301
102.60 AC.(PER ASSESSMENT)
102.60 AC.
PARCEL ID* 6010100004A



006
**THE ESTATE OF S.R.CURTIS,
a/k/a SIMON R.CURTIS**
W.B.5 PG 517
D.B.14, PG 360
TAX MAP NUMBER NOT ASSIGNED

002
THE PENINSULA PENTECOSTALS, INC.
Inst.* 150016466
4.82 AC.
PARCEL ID* 6010100008

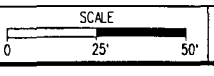
Key Legend

- | | | | |
|------------------------------------------|---------------------------------------------|------------------------------------------------------|---------------------------------------------|
| 1 6" Curb, Sfd, CG-2 Req'd. | 12 Underdrain Endwall, Sfd, EW-12 Req'd. | 23 Guardrail, Sfd, GR-MGS1 Req'd. | 34 Remove Exst. Guardrail |
| 2 4" Curb, Sfd, CG-3 Req'd. | 13 Abandon Pipe, Sfd, PP-1 Req'd. | 24 Guardrail, Sfd, GR-MGS1A Req'd. | 35 Remove Exst. Fence |
| 3 6" Curb and Gutter, Sfd, CG-6 Req'd. | 14 Groundwater Underdrain, Sfd, UD-1 Req'd. | 25 Guardrail Terminal, Sfd, GR-MGS2 Req'd. | 36 Remove Exst. Structure |
| 4 4" Curb and Gutter, Sfd, CG-7 Req'd. | 15 Median Underdrain, Sfd, UD-2 Req'd. | 26 Guardrail, Sfd, GR-10, 3" Height, Type I Req'd. | 37 Remove Exst. Pipe |
| 5 Conc. Raised Median, Sfd, MS-1 Req'd. | 16 Sidewalk Underdrain, Sfd, UD-3 Req'd. | 27 Guardrail, Sfd, GR-10, 3" Height, Type II Req'd. | 38 Abandon and Plug Exst. Pipe |
| 6 Conc. Raised Median, Sfd, MS-1A Req'd. | 17 Pavement Underdrain, Sfd, UD-4 Req'd. | 28 Guardrail, Sfd, GR-10, 3" Height, Type III Req'd. | 39 Adjust Exst. Structure |
| 7 Grass Raised Median, Sfd, MS-2 Req'd. | 18 Crossdrain, Sfd, CD-1 Req'd. | 29 Trailing End Terminal, Sfd, GR-MGS3 Req'd. | 40 Clean Out Exst. Structure |
| 8 Entrance Gutter, Sfd, CG-9B Req'd. | 19 Crossdrain, Sfd, CD-2 Req'd. | 30 Fixed Object Att., Sfd, GR-FOA-5 Req'd. | 41 Clean Out Exst. Pipe |
| 9 Entrance Gutter, Sfd, CG-9D Req'd. | 20 Handrail, Sfd, HR-1 Type II Req'd. | 31 Fixed Object Att., Sfd, GR-FOA-2 Req'd. | 42 Full Depth Sawcut |
| 10 Entrance, Sfd, CG-11 Req'd. | 21 Barbed Wire Fence, Sfd, FE-B Req'd. | 32 Guardrail, Sfd, GR-MGS4 | 43 6" Curb and Dry Gutter, Mod. CG-6 Req'd. |
| 11 Curb Ramp, Sfd, CG-12 Req'd. | 22 Chain Link Fence, Sfd, FE-CL Req'd. | 33 Bridge Pier Protection, Sfd, BPPS-1 | 44 Conc. Median Barrier, Sfd, MB-7F Req'd. |

- | | |
|-----------------------------|--------------------------------------------|
| Denotes Full Depth Pavement | Denotes Guardrail Bumpout Pavement Section |
| Denotes Pavement Demolition | Denotes Mill & Variable Depth Overlay |
| Denotes Milling and Overlay | Denotes Construction Limits In Cuts |
| | Denotes Construction Limits In Fills |

**REFERENCES
(PROFILES, DETAIL & DRAINAGE DESCRIPTION SHEETS, ETC)**

- | | |
|-----------------------|-----------|
| Alignment Data | 1G |
| SWM 3B Detail | 2B(3) |
| SWM 5 Detail | 2B(5) |
| ESC Phase 1 | 2D series |
| ESC Phase 2 | 2E series |
| ESC Phase 3 | 2F series |
| Skiffes Creek Profile | 4A |
| Right-of-Way Plan | 4RW |
| Drainage Descriptions | 16 |
| Storm Sewer Profiles | 17 |



PROJECT	0060-047-627	SHEET NO.	4
---------	--------------	-----------	---

City of Newport News Virginia Instrument #210008452 4/27/2021 Plat Book 10 Page 533